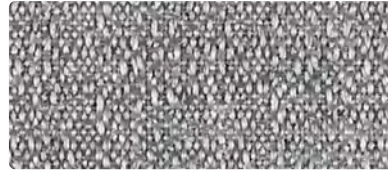


SPECTRUM COLLECTION

Multi-use fabrics for upholstery, panels, wrapped walls and acoustic with Ten Year Warranty



VARIANT10
425-026 Aluminum



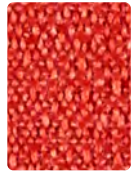
CONTINUUM10
422-036 Iron



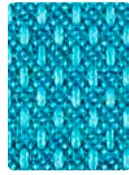
OPTIC10
424-016 Coal



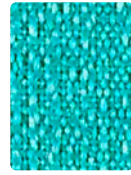
CONTINUUM10
422-002 Saffron



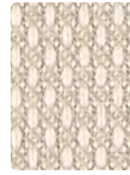
CONTINUUM10
422-001 Lipstick



VARIANT10
425-014 Prussian



CONTINUUM10
422-034 Turquoise



VARIANT10
425-007 Biscuit



OPTIC10
424-007 Mushroom



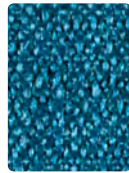
CONTINUUM10
422-026 Dove



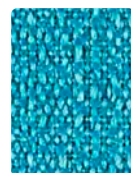
OPTIC10
424-019 Tangerine



OPTIC10
424-001 Red



CONTINUUM10
422-024 Caribbean



CONTINUUM10
422-044 Ocean



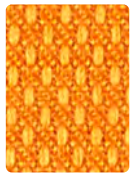
VARIANT10
425-002 Mustard



CONTINUUM10
422-027 Stone



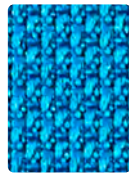
OPTIC10
424-026 Elephant



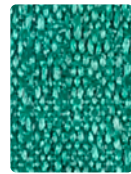
VARIANT10
425-019 Orange Peel



VARIANT10
425-001 Barn Red



OPTIC10
424-024 Ocean



CONTINUUM10
422-033 Pine



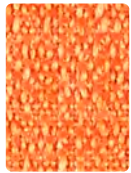
CONTINUUM10
422-023 Citrine



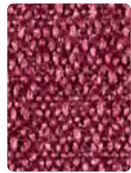
CONTINUUM10
422-007 Cafe Au Lait



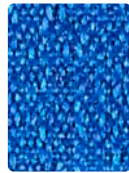
VARIANT10
425-016 Flint



CONTINUUM10
422-009 Mandarin



CONTINUUM10
422-008 Beet



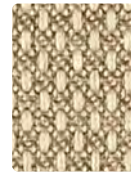
CONTINUUM10
422-014 Electric



OPTIC10
424-033 Myrtle



VARIANT10
425-003 Palm



VARIANT10
425-010 Cocoa



CONTINUUM10
422-016 Charcoal



VARIANT10
425-009 Persimmon



OPTIC10
424-005 Mulberry



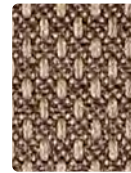
OPTIC10
424-004 Yale



OPTIC10
424-023 Springtime



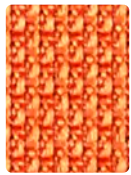
OPTIC10
424-013 Green Apple



VARIANT10
425-000 Chocolate



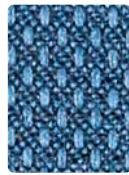
OPTIC10
424-006 Ash



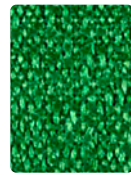
OPTIC10
424-009 Sunrise



CONTINUUM10
422-005 Magenta



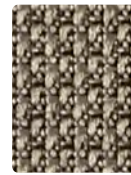
VARIANT10
425-004 Ink



CONTINUUM10
422-013 Emerald



CONTINUUM10
422-003 Spring



OPTIC10
424-000 Brown Bear



VARIANT10
425-006 Carbon



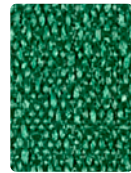
CONTINUUM10
422-019 Brick



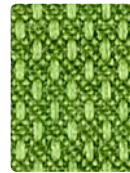
VARIANT10
425-005 Aubergine



CONTINUUM10
422-004 Indigo



CONTINUUM10
422-043 Bottle



VARIANT10
425-013 Jungle



CONTINUUM10
422-000 Espresso



CONTINUUM10
422-006 Onyx

TECHNICAL INFORMATION

Spectrum Collection

Pattern 54"	Content and Backing	Certifications	Weight/ Linear Yd.	Pattern Repeat	Finish	Abrasion Wyzenbeek	Light- Fastness	Flammability	Cleaning Code
CONTINUUM10 <i>Directional Multi-use*</i>	100% Post-Consumer Recycled Polyester Backing: Latex	GREENGUARD Gold	15 oz.	0.50" H, 0.59" V	Stain Repellent - PFOA & PFOS Free	130,000^ Double Rubs	40 hours	Cal. 117-2013 NFPA 260/UFAC Class 1 ASTM E84 (Unadhered) Class 1 or A	WS
OPTIC10 <i>Directional Multi-use*</i>	83% Post-Consumer Recycled Polyester 17% Polyester Backing: Latex	GREENGUARD Gold	16.5 oz.	0.33" H, 0.20" V	Stain Repellent - PFOA & PFOS Free	185,000^ Double Rubs	40 hours	Cal. 117-2013 NFPA 260/UFAC Class 1 ASTM E84 (Unadhered) Class 1 or A	WS
VARIANT10 <i>Directional Multi-use*</i>	75% Post-Consumer Recycled Polyester 25% Polyester Backing: Latex	GREENGUARD Gold	14.5 oz.	0.17" H, 0.20" V	Stain Repellent - PFOA & PFOS Free	140,000^ Double Rubs	40 hours	Cal. 117-2013 NFPA 260/UFAC Class 1 ASTM E84 (Unadhered) Class 1 or A	WS

REDUCED ENVIRONMENTAL IMPACT

These products are GREENGUARD Gold Certified for low chemical and particle emissions to UL standard UL 2818 and may contribute to LEED certification. For complete information visit mayerfabrics.com and UL.com/gg.

No FR/Antimicrobial/Antibacterial additives.

Continuum



The Eco-System icon indicates 100% recycled content.

TEN YEAR WARRANTY

The SPECTRUM COLLECTION patterns are covered by a 10-year limited performance warranty from the date of installation, when used for seating applications. The SPECTRUM COLLECTION patterns are warranted against wear through (i.e. the complete deterioration of the fabric's structure in a particular area) if properly installed and maintained. This warranty does not cover damage due to abuse, misuse, vandalism, inadequate padding or abrasion from other seating components or furniture, use of improper cleaning agents or methods and use subsequent to ownership by the original purchaser. Mayer Fabrics can provide a copy of the warranty. If the SPECTRUM COLLECTION fails to perform during the 10-year warranty period, the affected area of fabric will be repaired or replaced including labor and materials upon written request of the customer.

Except as expressly provided herein, Mayer Fabrics makes no representations or warranties, express or implied, including, without limitation, any warranty of merchantability or fitness of its products for any particular purpose, and hereby disclaim the same.

CARE AND CLEANING INFORMATION

WS: Water/Solvent Cleaner

DYE TRANSFER DISCLAIMER

Certain clothing and accessory dyes (such as those used on denim jeans) may migrate to lighter colors. This phenomenon is increased by humidity and temperature and is irreversible. Mayer Fabrics will not assume responsibility for dye transfer caused by external contaminants. Please check compatibility when using this product in combination with painted or varnished surfaces.

ADDITIONAL INFORMATION

^Abrasion: Multiple factors affect fabric durability and appearance retention, including end-user application and proper maintenance. Wyzenbeek results above 100,000 double rubs have not been shown to be a reliable indicator of increased fabric lifespan.

***Multi-Use:** Multi-use fabrics that can be used for upholstery, panels, wrapped walls, and acoustic.

Custom Capabilities: All patterns can be custom colored. Minimum yardage applies.

Digital Swatch Card Color Matching: Due to color variations on different monitors and color printers, actual swatch colors may vary slightly. Please request a memo sample from Mayer Fabrics to ensure proper color representation.

Specifications: Specifications are correct at the time of printing. Additional specifications are available on our website.



These fabrics meet or exceed these ACT performance guidelines.
*Certification Marks owned by ACT®



Water and Stain
Repellent Finish



This 100% polyester fabric is included in the Underwriter's Laboratory Fabric Recognition Program. Additional testing of this U.L. recognized component is not required on approved panels from participating manufacturers.

GSA Contract #GS-28F-0022P



MAYERFABRICS