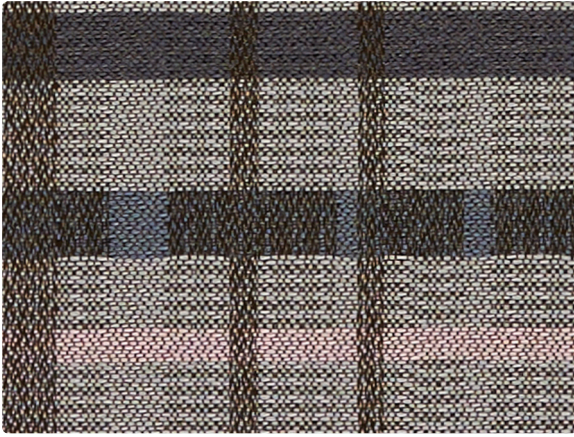


kwalu®

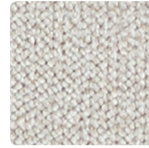
## SAVILE ROW COORDINATES

---





**TATTERSALL**  
WC707-000 Blush



**COSMOPOLITAN**  
WC968-016 Mist



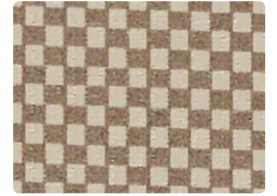
**COSMOPOLITAN**  
WC968-007 Ecrú



**COSMOPOLITAN**  
WC968-017 Oatmeal



**SOHO**  
WC705-002 Caramel



**CHEQUERS**  
CQ-000 Cafe



**ZEN**  
ZN-007 Alabaster



**ZEN**  
ZN-017 Stone



**ZEN**  
ZN-010 Earth



**TATTERSALL**  
WC707-002 Caramel



**LONDON**  
WC704-002 Topaz



**COSMOPOLITAN**  
WC968-006 Shadow



**COSMOPOLITAN**  
WC968-010 Granite



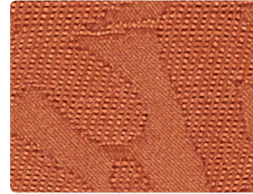
**COSMOPOLITAN**  
WC968-000 Shiitake



**TATTERSALL**  
WC707-019 Spice



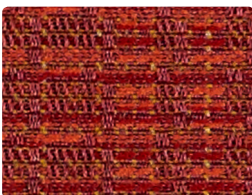
**SOHO**  
WC705-019 Spice



**LONDON**  
WC704-009 Spice



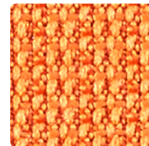
**SOHO**  
WC705-029 Apricot



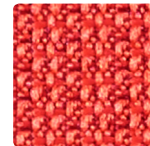
**SOHO**  
WC705-009 Tomato



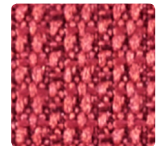
**LONDON**  
WC704-001 Currant



**REVEAL**  
WC966-009 Bittersweet



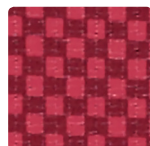
**REVEAL**  
WC966-001 Blaze



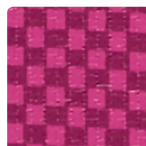
**REVEAL**  
WC966-011 Raspberry



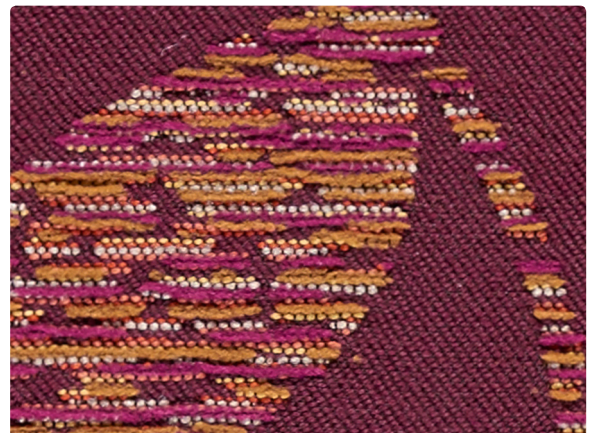
**CHEQUERS**  
CQ-009 Orange Peel



**CHEQUERS**  
CQ-001 Cardinal

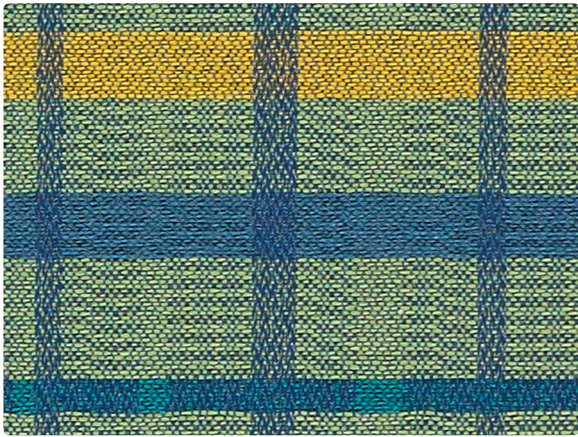


**CHEQUERS**  
CQ-005 Mulberry

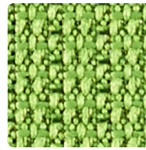


**SAORI**  
CZ974-001 Currant

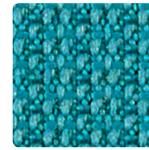




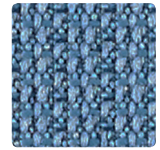
**TATTERSALL**  
WC707-003 Mallard



**REVEAL**  
WC966-003 Evergreen



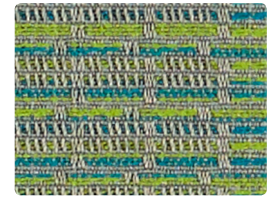
**REVEAL**  
WC966-014 Aqua



**REVEAL**  
WC966-004 Denim



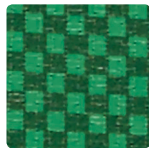
**LONDON**  
WC704-003 Apple



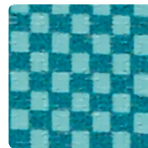
**SOHO**  
WC705-003 Meadow



**CHEQUERS**  
CQ-013 Pistachio



**CHEQUERS**  
CQ-003 Shamrock



**CHEQUERS**  
CQ-024 Ocean



**LONDON**  
WC704-023 Eucalyptus



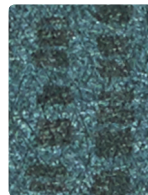
**SAORI**  
CZ974-013 Eucalyptus



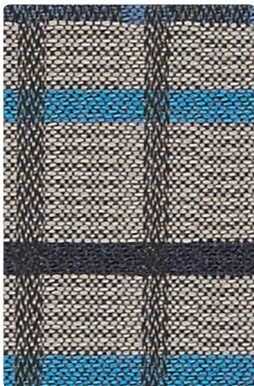
**ZEN**  
ZN-003 Verdigris



**ZEN**  
ZN-014 Blue Slate



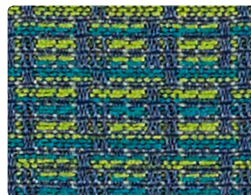
**ZEN**  
ZN-024 Ocean



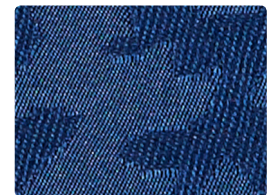
**TATTERSALL**  
WC707-004 Cobalt



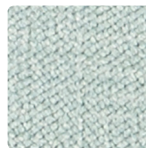
**LONDON**  
WC704-006 Metal



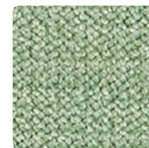
**SOHO**  
WC705-013 Mallard



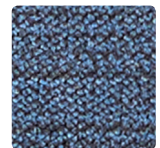
**LONDON**  
WC704-004 Indigo



**COSMOPOLITAN**  
WC968-014 Horizon



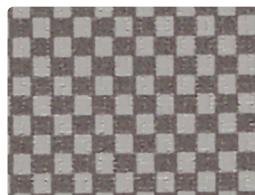
**COSMOPOLITAN**  
WC968-003 Opal



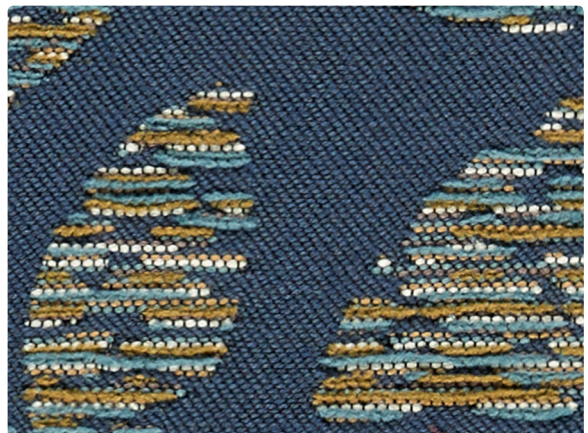
**COSMOPOLITAN**  
WC968-004 Denim



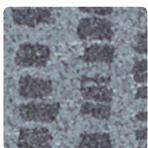
**CHEQUERS**  
CQ-004 Navy



**CHEQUERS**  
CQ-006 Metal



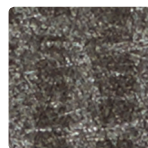
**SAORI**  
CZ974-004 Sapphire



**ZEN**  
ZN-016 Argent



**ZEN**  
ZN-000 Seal



**ZEN**  
ZN-006 Coal



# TECHNICAL INFORMATION

## Kwalu Savile Row Coordinates

Pattern 54"	Content and Backing	Certifications	Weight/ Linear Yd.	Pattern Repeat	Finish	Abrasion Wyzenbeek	Light-Fastness	Flammability	Cleaning Code
<b>CHEQUERS</b> <i>Directional</i>	60% Polyurethane Polycarbonate – PVC Free face, 40% Polyester backing	GREENGUARD	24.5 oz.	0.25" H, 0.2" V	Soil & Stain Resistant Top Coat with Ink Resistant Technology	100,000 Double Rubs	200 hours	Cal. 117-2013 NFPA 260/ UFAC Class 1	W, BC, CFC
<b>COSMOPOLITAN</b> <i>Directional</i>	88% Polyester, 12% Nylon Backing: Crypton®	GREENGUARD Gold	19.28 oz.	None	Crypton® with Antimicrobial Silver Ion Technology	100,000 Double Rubs	40 hours	Cal. 117-2013 NFPA 260/ UFAC Class 1	C, BC
<b>LONDON</b> <i>Directional</i>	63% Post-Consumer Recycled Polyester, 37% Eco-Intelligent Polyester (Antimony Free) Backing: Crypton® Green	GREENGUARD Gold Facts Gold	16.5 oz.	12.8" H, 10" V Non-Matching	Crypton® Green with Antimicrobial Silver Ion Technology	100,000 Double Rubs	40 hours	Cal. 117-2013 NFPA 260/ UFAC Class 1	C, BC
<b>REVEAL</b> <i>Directional</i>	100% Polyester Backing: Crypton®	GREENGUARD Gold	15.05 oz.	0.25" H, 0.125" V	Crypton® with Antimicrobial Silver Ion Technology	100,000 Double Rubs	40 hours	Cal. 117-2013 NFPA 260/ UFAC Class 1	C, BC
<b>SAORI</b> <i>Directional</i>	38% Recycled Polyester (20% Post-/18% Pre-Consumer), 62% Polyester Backing: C-Zero™ Plus	GREENGUARD Gold	29.536 oz.	14.375" H, 14.5" V	C-Zero™ Plus– PFOA & PFOS Free	60,000 Double Rubs	40 hours	Cal. 117-2013 NFPA 260/ UFAC Class 1	C, BC
<b>SOHO</b> <i>Directional</i>	60% Post-Consumer Recycled Polyester, 40% Eco-Intelligent Polyester (Antimony Free) Backing: Crypton® Green	GREENGUARD Gold Facts Gold	13.3 oz.	5.75" H, 4.92" V	Crypton® Green with Antimicrobial Silver Ion Technology	100,000 Double Rubs	40 hours	Cal. 117-2013 NFPA 260/ UFAC Class 1	C, BC
<b>TATTERSALL</b> <i>Directional</i>	62% Post-Consumer Recycled Polyester, 38% Eco-Intelligent Polyester (Antimony Free) Backing: Crypton® Green	GREENGUARD Gold Facts Gold	13.3 oz.	7.3" H, 5.2" V	Crypton® Green with Antimicrobial Silver Ion Technology	100,000 Double Rubs	40 hours	Cal. 117-2013 NFPA 260/ UFAC Class 1	C, BC
<b>ZEN</b> <i>Directional</i>	46% Polyurethane Polycarbonate – PVC Free/ 2% Silicone face, 52% Polyester backing	GREENGUARD	18 oz.	10.4" H, 5.3" V Non-Matching	Soil & Stain Resistant Top Coat	100,000 Double Rubs	200 hours	Cal. 117-2013 NFPA 260/ UFAC Class 1	BC, CFC

### REDUCED ENVIRONMENTAL IMPACT

These products are GREENGUARD Certified or GREENGUARD Gold Certified for low chemical and particle emissions to UL standard UL 2818 and may contribute to LEED certification. For complete information visit [mayerfabrics.com](http://mayerfabrics.com) and [UL.com/gg](http://UL.com/gg).

### CARE AND CLEANING INFORMATION

W: Water-Based Cleaner      C: Crypton® Cleaning      CFC: Coated Fabrics Cleaning – Refer to Mayer website for complete cleaning info.  
 BC: Bleach Cleanable – 1 part bleach, 9 parts water = 10% bleach, 90% water solution. **Do not clean/disinfect fabric for longer than 10 minutes using the 10% bleach solution. Always rinse promptly with clean water after applying the bleach solution. Failure to do so will void any and all warranties.**

For additional care and cleaning information by pattern, please refer to the Mayer Fabrics website.

### DYE TRANSFER DISCLAIMER

Certain clothing and accessory dyes (such as those used on denim jeans) may migrate to lighter colors. This phenomenon is increased by humidity and temperature and is irreversible. Mayer Fabrics will not assume responsibility for dye transfer caused by external contaminants. Please check compatibility when using this product in combination with painted or varnished surfaces.

### ADDITIONAL INFORMATION

**CAL TB 133:** All patterns may comply with California Technical Bulletin 133 when combined with appropriate components.

**Custom Capabilities:** All patterns can be custom colored. Minimum yardage applies.

**Digital Swatch Card Color Matching:** Due to color variations on different monitors and color printers, actual swatch colors may vary slightly. Please request a memo sample from Mayer Fabrics to ensure proper color representation.

**Specifications:** Specifications are correct at the time of printing. Additional specifications are available on our website.

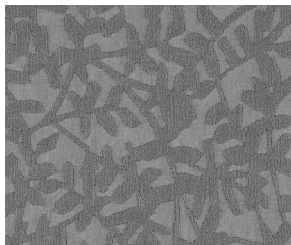


These fabrics meet or exceed these ACT performance guidelines. \*Certification Marks owned by ACT\*

### London, Soho, Tattersall



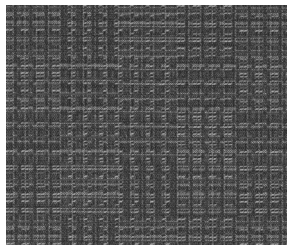
The Facts icon indicates that a textile has been evaluated based on the requirements of the multi-attribute sustainability standard NSF/ANSI 336 through an independent third-party certification body authorized by the Association for Contract Textiles.



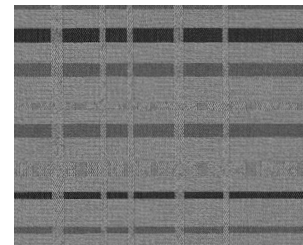
LONDON – Approx. Repeat:  
12.8 in/32.51 cm H, 10 in/25.40 cm V  
Non-Matching



SAORI – Repeat:  
14.375 in/36.51 cm H, 14.5 in/36.83 cm V



SOHO – Approx. Repeat:  
5.75 in/14.61 cm H, 4.92 in/12.50 cm V



TATTERSALL – Approx. Repeat:  
7.3 in/18.54 cm H, 5.2 in/13.21 cm V

**kwalu**®

† 877-MY KWALU  
[www.kwalu.com](http://www.kwalu.com)



† 317.267.2626 or 800.428.4415    † 317.267.2629 or 877.7SAMPLE  
[www.mayerfabrics.com](http://www.mayerfabrics.com)  
©2019 Mayer-Paetz, Inc.

KSRCCD  
50119