

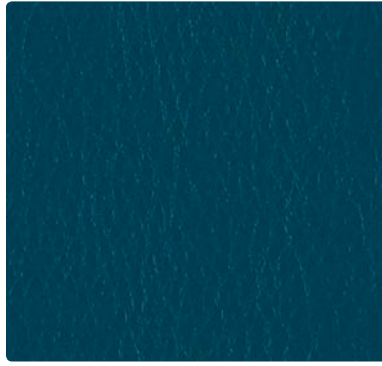
# FEDORA Grade 1

# CARESSA Grade 2

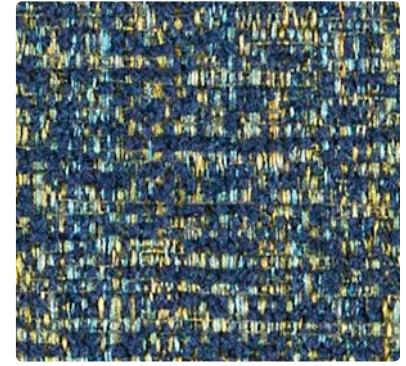
# LAVISH Grade 3



621-014  
Indigo



CA-114  
Pacific



WC969-004  
Lagoon



621-002  
Topaz



621-019  
Tangelo



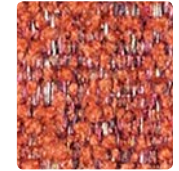
CA-032  
Lemon



CA-039  
Tangerine



WC969-002  
Sunflower



WC969-009  
Ember



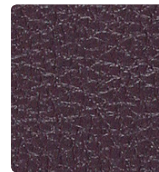
621-001  
Ruby



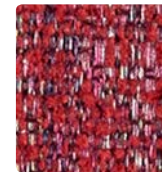
621-008  
Plum



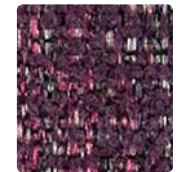
CA-021  
Red Pepper



CA-005  
Aubergine



WC969-001  
Crimson



WC969-005  
Wildberry



621-053  
Aegean



621-004  
Midnight



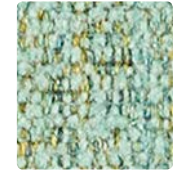
CA-094  
Calypso



CA-064  
Cerulean



WC969-026  
Cloud



WC969-014  
Turquoise



621-013  
Citron



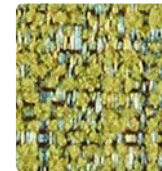
621-003  
Cactus



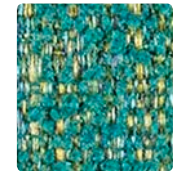
CA-103  
Lime



CA-113  
Jade



WC969-003  
Avocado



WC969-013  
Peacock



621-036  
Dapper



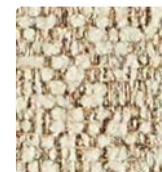
621-017  
Fawn



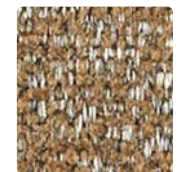
CA-107  
Pebble



CA-030  
Taupe



WC969-007  
Ecru



WC969-000  
Mocha



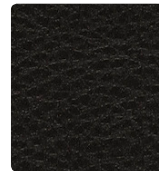
621-016  
Charcoal



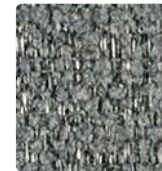
621-006  
Bitumen



CA-026  
Granite



CA-006  
Black



WC969-016  
Thunder



WC969-006  
Graphite

# TECHNICAL INFORMATION

Pattern 54"	Content and Backing	Certifications	Weight/ Linear Yd.	Pattern Repeat	Finish	Abrasion Wyzenbeek	Light-Fastness	Flammability	Cleaning Code	Grade
<b>CARESSA FR</b>	80% Vinyl Phthalate Free face, 20% Polyester backing	GREENGUARD	29 oz.	None	Soil & Stain Resistant Top Coat with Ink Resistant Technology	650,000 <sup>^</sup> Double Rubs	1000 hours	Cal. 117-2013 NFPA 260/UFAC Class 1 ASTM E84 (Adhered & Unadhered) Class 1 or A Boston Fire Dept. Code FMVSS 302 IMO A.652(16) 8.2 & 8.3 IMO FTP 2010 Part 8, 3.1 & 3.2 NY & NJ Port Authority	WS, BC, CFC	2
<b>FEDORA</b> <i>Directional Multi-purpose*</i>	100% Polyester Backing: Polyester	GREENGUARD Gold	17.2 oz.	None	Stain Repellent-PFOA Free	100,000 Double Rubs	40 hours	Cal. 117-2013 NFPA 260/UFAC Class 1 ASTM E84 (Unadhered) Class 1 or A	W	1
<b>LAVISH</b> <i>Directional</i>	100% Polyester Backing: Crypton®	GREENGUARD Gold	22.98 oz.	None	Crypton® with Antimicrobial Silver Ion Technology	79,000 Double Rubs	40 hours	Cal. 117-2013 NFPA 260/UFAC Class 1	C, BC	3

## REDUCED ENVIRONMENTAL IMPACT

These products are GREENGUARD Certified or GREENGUARD Gold Certified for low chemical and particle emissions to UL standard UL 2818 and may contribute to LEED certification. For complete information visit [mayerfabrics.com](http://mayerfabrics.com) and [UL.com/gg](http://UL.com/gg).

### Caressa FR

Phthalate Free Tris Free

## CARE AND CLEANING INFORMATION

W: Water-Based Cleaner

WS: Water/Solvent Cleaner

BC: Bleach Cleanable – 1 part bleach, 9 parts water = 10% bleach, 90% water solution. Do not clean/disinfect fabric for longer than 10 minutes using the 10% bleach solution. Always rinse promptly with clean water after applying the bleach solution. Failure to do so will void any and all warranties.

C: Crypton® Cleaning

CFC: Coated Fabrics Cleaning – Refer to Mayer website for complete cleaning info.

For additional care and cleaning information by pattern, please refer to the Mayer Fabrics website.

## DYE TRANSFER DISCLAIMER

Certain clothing and accessory dyes (such as those used on denim jeans) may migrate to lighter colors. This phenomenon is increased by humidity and temperature and is irreversible. Mayer Fabrics will not assume responsibility for dye transfer caused by external contaminants. Please check compatibility when using this product in combination with painted or varnished surfaces.

## ADDITIONAL INFORMATION

**CAL TB 133:** All patterns may comply with California Technical Bulletin 133 when combined with appropriate components.

**^Abrasion:** Multiple factors affect fabric durability and appearance retention, including end-user application and proper maintenance. Wyzenbeek results above 100,000 double rubs have not been shown to be a reliable indicator of increased fabric lifespan.

**Custom Capabilities:** All patterns can be custom colored. Minimum yardage applies.

**Specifications:** Specifications are correct at the time of printing. Additional specifications are available on our website.

**Digital Swatch Card Color Matching:** Due to color variations on different monitors and color printers, actual swatch colors may vary slightly. Please request a memo sample from Mayer Fabrics to ensure proper color representation.

**\*Fedora:** A multi-purpose fabric that can be used for upholstery, panels, & wrapped walls.



These fabrics meet or exceed these ACT performance guidelines.  
\*Certification Marks owned by ACT®

### Fedora



Water and Stain Repellent Finish

### Lavish



CRYPTON®

# TexTile3D™

by Mayer Fabrics

For additional colors, pre-approved patterns, grade-ins, samples and specifications, please refer to the Mayer TexTile3D link.

**RT LONDON®**

**M**  
**MAYERFABRICS**