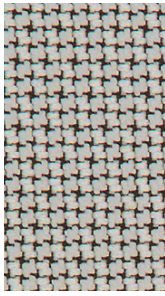
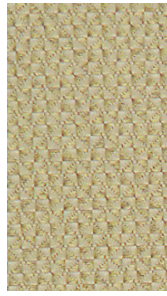




QUATTRO Pumice



CROSS CHECK Dove



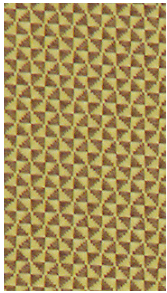
QUATTRO Chalk



CROSS CHECK Stone



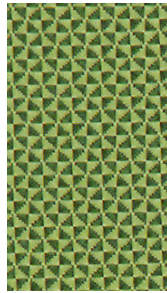
CROSS CHECK Taupe



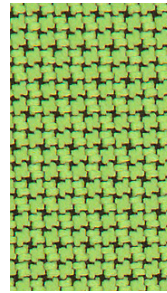
Wheat



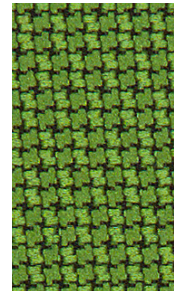
Sunshine



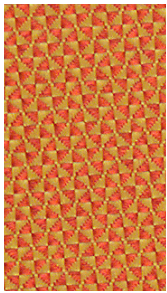
Spring Green



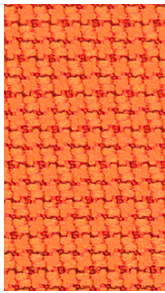
Lime



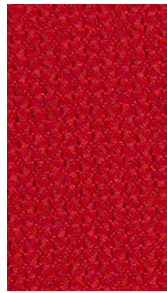
Evergreen



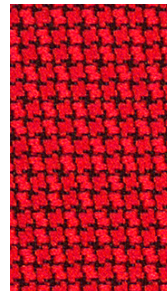
Golden Orange



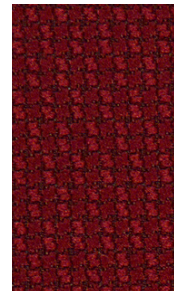
Paradise



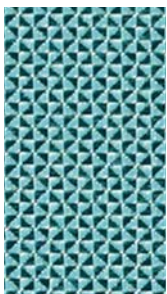
Hibiscus



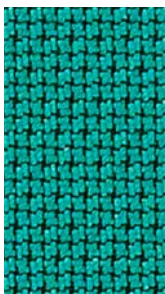
Red Baron



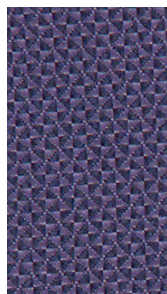
Vermilion



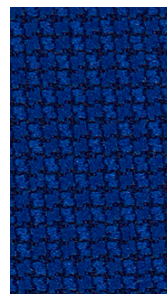
Mallard



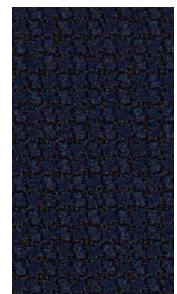
Peacock



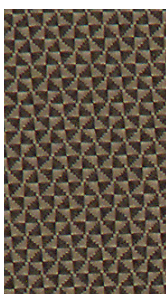
Midnight Blue



Blue Ribbon



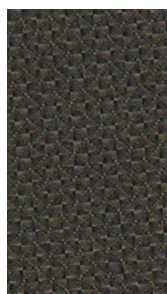
Imperial



Khaki



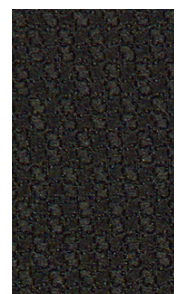
Platinum



Granite













Otter



Slate Black

Technical Information

Width/ Pattern	Fabric Grade	Fiber Content & Backing	Weight	Abrasion Resistance	Light- fastness	Approx. Repeats	Cl. Code
54" Cross Check     	2	100% Polyester Acrylic Backing	10.71 oz./ linear yard	258,000 Double Rubs	40 Hours Class 4	Non-matching	S
54" Quattro     	2	100% Polyester Acrylic Backing	13.06 oz./ linear yard	237,000 Double Rubs	40 Hours Class 4.5	Non-matching	S

Digital Swatch Card Color Matching: Due to color variations on different monitors and color printers, actual swatch colors may vary slightly. Please request a memo sample from Mayer Fabrics to ensure proper color representation.

EXPLANATION OF ACT ICONS FOR UPHOLSTERY

 Fire Retardancy

Flammability testing determined as fabric's resistance to burning.

PASSES California 117 2013

 Colorfastness to Wet and Dry Crocking

Colorfastness to wet & dry crocking refers to the rubbing off of color from the fabric onto clothing, hands or other materials and can occur under wet or dry conditions.

PASSES AATCC 8 Dry Crocking: Class 4 minimum; Wet Crocking: Class 4 minimum

 Colorfastness to Light

Colorfastness to light is the degree to which fabric will retain its color when exposed to light.

PASSES
CROSS CHECK
AATCC 16; Class 4 minimum at 40 hours
QUATTRO
AATCC 16; Class 4.5 minimum at 40 hours

NOTE: Class 4 minimum at 40 hours is recommended for direct sunlight exposure situations.


 Physical Properties

3 physical property tests include: brush pill test to determine a fabric's pilling. Breaking/tensile strength is the ability of a fabric to withstand tension without breaking or tearing. Seam slippage is the pulling apart of fabrics at the seams.

PASSES
CROSS CHECK Brush Pill ASTM D3511: 4.5
Breaking Strength ASTM 5034 - Warp: 201.1 lbs
Fill: 171.5 lbs
QUATTRO Brush Pill ASTM D3511: 5
Breaking Strength ASTM 5034 - Warp: 376.6 lbs
Fill: 115.5 lbs

Abrasion

Abrasion is the ability of a fabric to withstand damage from wear and rubbing. There is a general contract specification as well as heavy duty specification.

PASSES
 (Heavy Duty) ASTM 4157 modified
(#10 cotton duck); 258,000/237,000
double rubs Wyzenbeek Method

NOTE: Multiple factors affect fabric durability and (Wyzenbeek/Cotton Duck) appearance retention, including end-user application and proper maintenance. Wyzenbeek results above 100,000 double rubs have not been shown to be a reliable indicator of increased fabric lifespan.

Cleaning Code Definitions

S Solvent Cleaners

Spot clean, using a mild water-free solvent or dry cleaning product. Clean in a well-ventilated room and avoid any product containing carbon tetrachloride or other toxic materials. Pre-test a small area before proceeding. Always rinse promptly with clean water.

Please visit manufacturer's website for cleaning guide at www.mayerfabrics.com