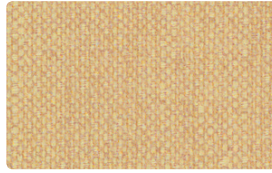


VINYL COORDINATES



DURANGO
DU-007 Natural



KEY LARGO
KL-017 Khaki



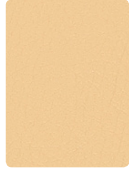
CARESSA
CA-027 Buff



ESSENCE
ES-017 Stone



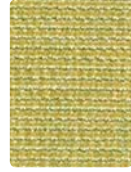
ESSENCE
ES-007 Bone



DURANGO
DU-002 Chamois



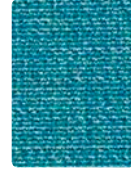
CARESSA
CA-029 Ochre



ESSENCE
ES-013 Citron



DURANGO
DU-014 Cyan



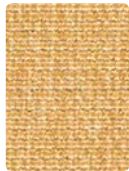
ESSENCE
ES-033 Peacock



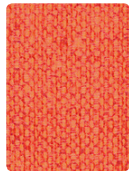
ESSENCE
ES-026 Pearl



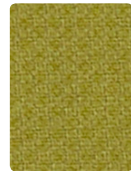
CARESSA
CA-047 Doe



ESSENCE
ES-002 Sunray



KEY LARGO
KL-009 Tangerine



KEY LARGO
KL-033 Pear



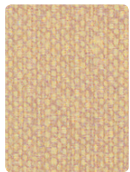
CARESSA
CA-084 Aqua



CARESSA
CA-064 Cerulean



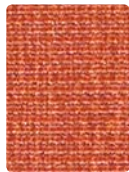
CARESSA
CA-046 Stone



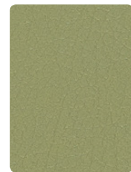
KEY LARGO
KL-027 Sand



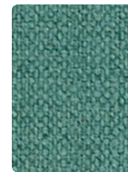
KEY LARGO
KL-002 Gold Coast



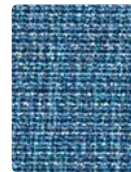
ESSENCE
ES-009 Persimmon



DURANGO
DU-023 Jade



KEY LARGO
KL-024 Nassau



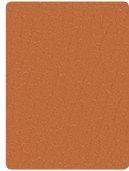
ESSENCE
ES-014 Indigo



ESSENCE
ES-016 Metal



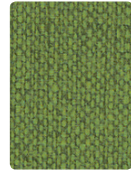
CARESSA
CA-012 Mojave



DURANGO
DU-019 Sepia



DURANGO
DU-009 Tangelo



KEY LARGO
KL-013 Palm



DURANGO
DU-033 Calypso



CARESSA
CA-044 Cadet



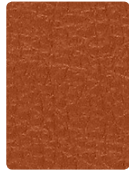
CARESSA
CA-026 Granite



KEY LARGO
KL-020 Sandstone



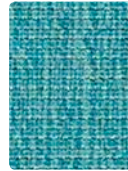
CARESSA
CA-060 Caramel



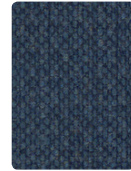
CARESSA
CA-019 Bittersweet



ESSENCE
ES-003 Hedge



ESSENCE
ES-023 Sea



KEY LARGO
KL-004 Ultramarine



KEY LARGO
KL-026 Quarry



CARESSA
CA-037 Papyrus



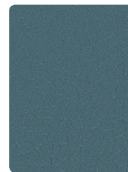
CARESSA
CA-070 Rawhide



CARESSA
CA-009 Red Clay



DURANGO
DU-013 Basil



DURANGO
DU-024 Aegean



DURANGO
DU-004 Sapphire



ESSENCE
ES-006 Charcoal



ESSENCE
ES-000 Cocoa



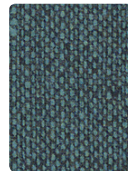
DURANGO
DU-029 Cordovan



DURANGO
DU-001 Paprika



CARESSA
CA-053 Laurel



KEY LARGO
KL-014 Aegean



CARESSA
CA-014 Admiral



DURANGO
DU-016 Char

Additional colors are available. Please refer to the Mayer Fabrics website.

TECHNICAL INFORMATION

Stance Healthcare Vinyl Coordinates

Pattern 54"	Content and Backing	Certifications	Weight/ Linear Yd.	Pattern Repeat	Finish	Abrasion Wyzenbeek	Light- Fastness	Flammability	Cleaning Code	Grade
CARESSA FR	80% Vinyl Phthalate Free face, 20% Polyester backing	GREENGUARD	29 oz.	None	Soil & Stain Resistant Top Coat with Ink Resistant Technology	650,000 [^] Double Rubs	1000 hours	Cal. 117-2013 NFPA 260/UFAC Class 1 ASTM E84 (Adhered) Class 1 or A BIFMA CS-191-53, Section 3 & Upholstery, Section 4 Boston Fire Dept. Code FMVSS 302 IMO A.652(16) 8.2 & 8.3 NY & NJ Port Authority	WS, BC, CFC	2
DURANGO	78% Vinyl face, 22% Polyester backing	GREENGUARD	30 oz.	None	Soil & Stain Resistant Top Coat with Ink Resistant Technology	1,000,000 [^] Double Rubs	650 hours	Cal. 117-2013 NFPA 260/UFAC Class 1 BIFMA Boston Fire Dept. Code FAA/FAR 25.853(a) & Appd. F Part I(a)(ii) Fed. Spec. CID A-A-2950/ supercedes CCC-A-680A FMVSS 302 NFPA 701 NY & NJ Port Authority	WS, BC, CFC	1
ESSENCE	80% Vinyl Phthalate Free face, 20% Polyester backing	GREENGUARD	30 oz.	None	Soil & Stain Resistant Top Coat with Ink Resistant Technology	250,000 [^] Double Rubs	200 hours	Cal. 117-2013 NFPA 260/UFAC Class 1	WS, BC	3
KEY LARGO <i>Directional</i>	86% Vinyl Phthalate Free face, 14% Polyester backing	GREENGUARD	28 oz.	None	Soil & Stain Resistant Top Coat with Ink Resistant Technology	250,000 [^] Double Rubs	650 hours	Cal. 117-2013 NFPA 260/UFAC Class 1 BIFMA CS-191-53, Section 3 & 4 FMVSS 302 IMO FTP 2010 Part 8, 3.1.3.2	WS, BC, CFC	2

REDUCED ENVIRONMENTAL IMPACT

These products are GREENGUARD Certified for low chemical and particle emissions to UL standard UL 2818 and may contribute to LEED certification. For complete information visit mayerfabrics.com and UL.com/gg.

Caressa FR

Tris Free Phthalate Free

Essence

No FR additives Phthalate Free Lead Free BPA Free/Tris Free/Formaldehyde Free Does not contain conflict minerals

Key Largo

Phthalate Free Lead/Heavy Metal Free Tris Free Does not contain conflict minerals

Phthalate and Lead Free to meet CPSC/CPSIA (children's products) environmental and health standards.

CARE AND CLEANING INFORMATION

CFC: Coated Fabrics Cleaning – Refer to Mayer website for complete cleaning info.

WS: Water/Solvent Cleaner

BC: Bleach Cleanable – 1 part bleach, 9 parts water = 10% bleach, 90% water solution. Do not clean/disinfect fabric for longer than 10 minutes using the 10% bleach solution. Always rinse promptly with clean water after applying the bleach solution. Failure to do so will void any and all warranties.

ADDITIONAL INFORMATION

CAL TB 133: All patterns may comply with California Technical Bulletin 133 when combined with appropriate components.

[^]Abrasion: Multiple factors affect fabric durability and appearance retention, including end-user application and proper maintenance. Wyzenbeek results above 100,000 double rubs have not been shown to be a reliable indicator of increased fabric lifespan.

Custom Capabilities: All patterns can be custom colored. Minimum yardage applies.

Specifications: Specifications are correct at the time of printing. Additional specifications are available on our website.



These fabrics meet or exceed these ACT performance guidelines.
Certification Marks owned by ACT



STANCE | HEALTHCARE

275 Shoemaker Street, Kitchener, ON, N2E 3B3
T 1.877.395.2623 F 1.877.395.6270
www.stancehealthcare.com



T 317.267.2626 or 800.428.4415 F 317.267.2629 or 877.7SAMPLE
www.mayerfabrics.com
©2018 Mayer-Paetz, Inc.

SHVCCD
50218