

COSMOPOLITAN



WC968-017
Oatmeal



WC968-007
Ecrú



WC968-019
Saffron



WC968-014
Horizon



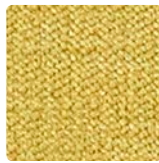
WC968-012
Lemongrass



WC968-016
Mist



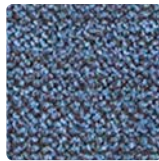
WC968-006
Shadow



WC968-002
Marigold



WC968-009
Tangerine



WC968-004
Denim



WC968-003
Opal



WC968-010
Granite

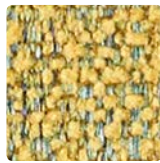


WC968-000
Shiitake

LAVISH



WC969-010
Pecan



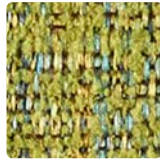
WC969-002
Sunflower



WC969-001
Crimson



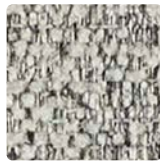
WC969-014
Turquoise



WC969-003
Avocado



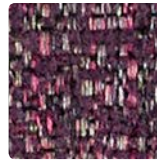
WC969-007
Ecrú



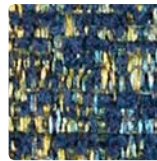
WC969-026
Cloud



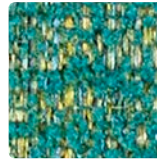
WC969-009
Ember



WC969-005
Wildberry



WC969-004
Lagoon



WC969-013
Peacock

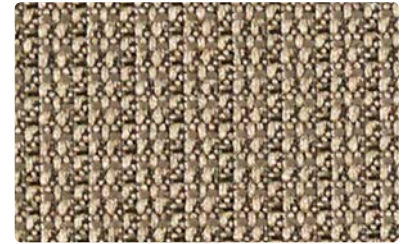


WC969-000
Mocha

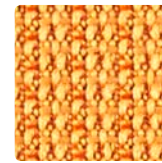


WC969-006
Graphite

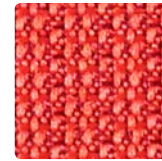
REVEAL



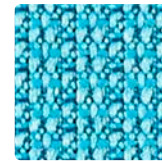
WC966-010
Chestnut



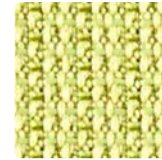
WC966-019
Saffron



WC966-001
Blaze



WC966-014
Aqua



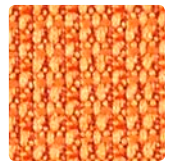
WC966-013
Limelight



WC966-007
Taupe



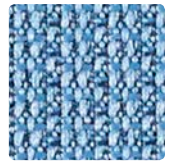
WC966-026
Zinc



WC966-009
Bittersweet



WC966-011
Raspberry



WC966-004
Denim



WC966-003
Evergreen



WC966-000
Espresso



WC966-006
Charcoal

Additional colors are available. Please refer to the Mayer Fabrics website.

TECHNICAL INFORMATION

Crypton Coordinates

| Pattern 54" | Content and Backing | Certifications | Weight/ Linear Yd. | Pattern Repeat | Finish | Abrasion Wyzenbeek | Light- Fastness | Flammability | Cleaning Code |
|---|---|----------------------------|-----------------------|----------------------|--|------------------------|--------------------|--|------------------|
| COSMOPOLITAN <i>Directional</i> | 88% Polyester, 12% Nylon Backing: Crypton® | GREENGUARD Gold | 19.28 oz. | None | Crypton® with Antimicrobial Silver Ion Technology | 100,000 Double Rubs | 40 hours | Cal. 117-2013 NFPA 260/UFAC Class 1 | C, BC |
| LAVISH <i>Directional</i> | 100% Polyester Backing: Crypton® | GREENGUARD Gold | 22.98 oz. | None | Crypton® with Antimicrobial Silver Ion Technology | 79,000 Double Rubs | 40 hours | Cal. 117-2013 NFPA 260/UFAC Class 1 | C, BC |
| REVEAL <i>Directional</i> | 100% Polyester Backing: Crypton® | GREENGUARD Gold | 15.05 oz. | 0.25" H, 0.125" V | Crypton® with Antimicrobial Silver Ion Technology | 100,000 Double Rubs | 40 hours | Cal. 117-2013 NFPA 260/UFAC Class 1 | C, BC |

May comply with California Technical Bulletin 133 when combined with appropriate components.

REDUCED ENVIRONMENTAL IMPACT

These products are GREENGUARD Gold Certified for low chemical and particle emissions to UL standard UL 2818 and may contribute to LEED certification. For complete information visit mayerfabrics.com and UL.com/gg.

CLEANING INFORMATION

C: Crypton® Cleaning

BC: Bleach Cleanable – 1 part bleach, 9 parts water = 10% bleach, 90% water solution. Do not clean/disinfect fabric for longer than 10 minutes using the 10% bleach solution. Always rinse promptly with clean water after applying the bleach solution. Failure to do so will void any and all warranties.

ADDITIONAL INFORMATION

Custom Capabilities: All patterns can be custom colored. Minimum yardage applies.

Digital Swatch Card Color Matching: Due to color variations on different monitors and color printers, actual swatch colors may vary slightly. Please request a memo sample from Mayer Fabrics to ensure proper color representation.

Specifications: Specifications are correct at the time of printing. Additional specifications are available on our website.



These fabrics meet or exceed these ACT performance guidelines.
*Certification Marks owned by ACT®



spec

Spec Furniture Inc.
TOLL FREE: 888.761.7732 TEL: 416.246.5550 FAX: 416.246.5549
Email: specit@specfurniture.com
www.specfurniture.com

T 317.267.2626 or 800.428.4415 F 317.267.2629 or 877.7SAMPLE
www.mayerfabrics.com
©2017 Mayer-Paetz, Inc.



SFCCCD
51117