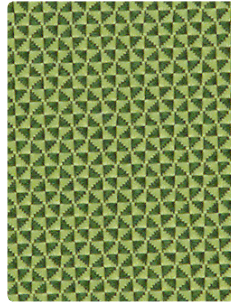
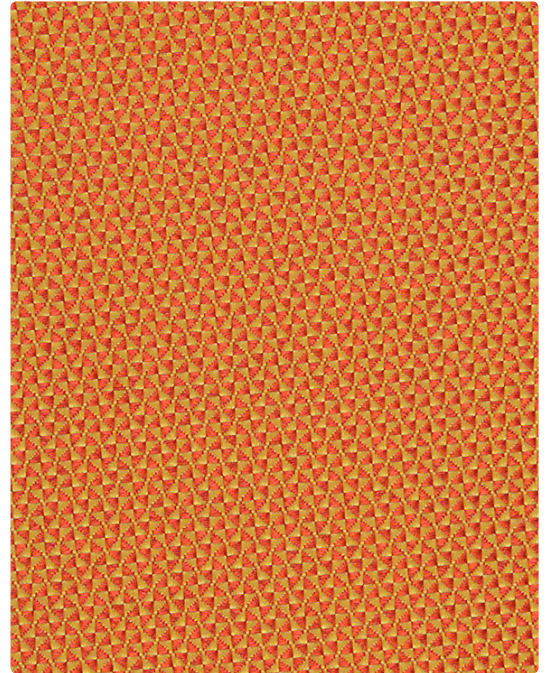


**COMPEL**<sup>®</sup>  
OFFICE FURNITURE



300-003  
Spring Green



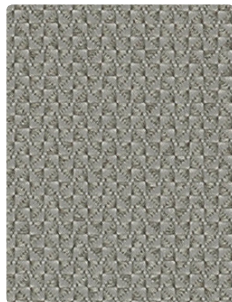
300-019  
Golden Orange



300-036  
Pumice



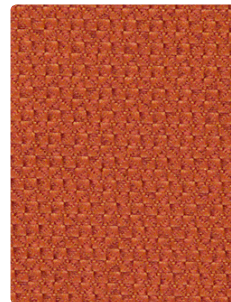
300-033  
Leaf



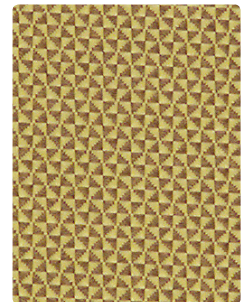
300-026  
Mercury



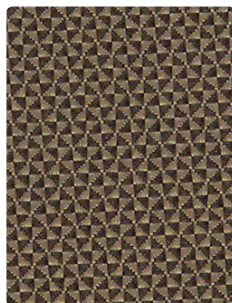
300-023  
Mallard



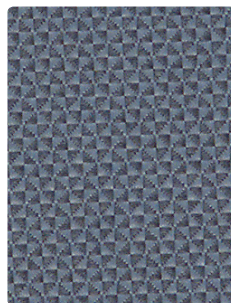
300-009  
Umber



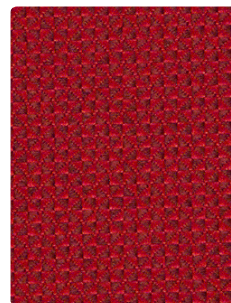
300-002  
Wheat



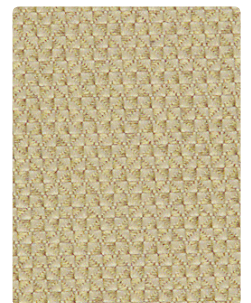
300-016  
Khaki



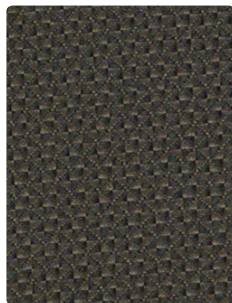
300-024  
Laguna



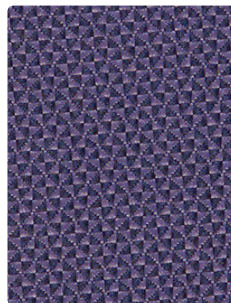
300-001  
Deep Crimson



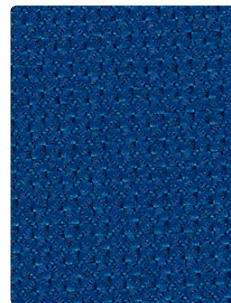
300-007  
Chalk



300-006  
Granite



300-004  
Midnight Blue



300-014  
Skyway



300-000  
Honeycomb

**Application**  
Upholstery Seating

**Content**  
100% Polyester

**Width**  
54 inches

**Abrasion** (Wyzenbeek/Cotton Duck)  
Passes 237,000 Double Rubs

**Finish**  
Stain Repellent

**Reduced Environmental Impact**  
GREENGUARD Gold Certified

## TECHNICAL INFORMATION

Content: 100% Polyester

Width: 54"

Backing: Acrylic

Approx. Repeat: Non-matching

Weight: 13.06 oz./linear yard

Finish: Stain Repellent

Directional: Yes

Shown Railroaded: No

## PERFORMANCE

Surface Abrasion: Heavy Duty ASTM D 4157  
(Wyzenbeek/Cotton Duck)

Pilling Resistance ASTM D 3511

Colorfastness to Crocking AATCC-8

Colorfastness to Light AATCC 16

## Results

Passes 237,000 Double Rubs Multiple factors affect fabric durability and appearance retention, including end-user application and proper maintenance. Wyzenbeek results above 100,000 double rubs have not been shown to be a reliable indicator of increased fabric lifespan.

Class 5

Dry: Class 4 min / Wet: Class 4 min

Class 4.5 at 40 hours

## FLAMMABILITY

California Technical Bulletin 117-2013

NFPA 260/UFAC Class 1

ASTM E84 (Unadhered) Class 1 or A

IMO A.652(16) 8.2

May comply with California Technical Bulletin 133 when combined with appropriate components.

## REDUCED ENVIRONMENTAL IMPACT

This product is GREENGUARD Gold Certified for low chemical and particle emissions to UL standard UL 2818 and may contribute to LEED certification. For complete information visit [mayerfabrics.com](http://mayerfabrics.com) and [UL.com/gg](http://UL.com/gg).

## CLEANING INFORMATION

S: Solvent

## ADDITIONAL INFORMATION

**Custom Capabilities:** All patterns can be custom colored. Minimum yardage applies.

**Digital Swatch Card Color Matching:** Due to color variations on different monitors and color printers, actual swatch colors may vary slightly. Please request a memo sample from Mayer Fabrics to ensure proper color representation.

**Specifications:** Specifications are correct at the time of printing. Current specifications are available on our website.



This fabric meets or exceeds these ACT performance guidelines.  
\*Certification Marks owned by ACT®



This 100% polyester fabric is included in the Underwriter's Laboratory Fabric Recognition Program. Additional testing of this U.L. recognized component is not required on approved panels from participating manufacturers.



Water and Stain  
Repellent Finish