

ESSENCE



ES-007
Bone

CARESSA



CA-074
Spa

MINGLE



MG-027
Hemp

DURANGO



DU-024
Aegean



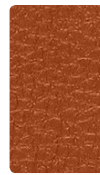
ES-002
Sunray



ES-009
Persimmon



CA-002
Butterscotch



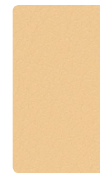
CA-019
Bittersweet



MG-002
Straw



MG-009
Melon



DU-002
Chamois



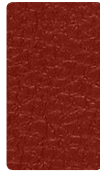
DU-009
Tangelo



ES-011
Tomato



ES-005
Plum



CA-021
Red Pepper



CA-005
Aubergine



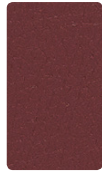
MG-001
Rouge



MG-008
Magenta



DU-001
Paprika



DU-011
Chili



ES-033
Peacock



ES-014
Indigo



CA-064
Cerulean



CA-014
Admiral



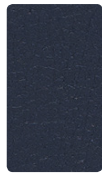
MG-014
Sky



MG-004
Indigo



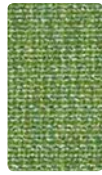
DU-014
Cyan



DU-004
Sapphire



ES-013
Citron



ES-003
Hedge



CA-083
Wasabi



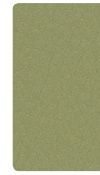
CA-053
Laurel



MG-003
Aloe



MG-013
Aqua



DU-023
Jade



DU-033
Calypso



ES-017
Stone



ES-000
Cocoa



CA-060
Caramel



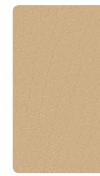
CA-040
Java



MG-017
Flax



MG-020
Fog



DU-007
Natural



DU-010
Bombay



ES-026
Pearl



ES-016
Metal



CA-046
Stone



CA-026
Granite



MG-026
Cloud



MG-036
Rain



DU-000
Cocoa



DU-016
Char

Additional colors are available. Please refer to the Mayer Fabrics website.

TECHNICAL INFORMATION

Kwalu Vinyl Coordinates

Pattern 54"	Content and Backing	Certifications	Weight/ Linear Yd.	Pattern Repeat	Finish	Abrasion Wyzenbeek	Light- Fastness	Flammability	Cleaning Code
CARESSA FR	80% Vinyl face, 20% Polyester backing	GREENGUARD	29 oz.	None	Soil & Stain Resistant Topcoat with Ink Resistant Technology	650,000^ Double Rubs	1000 hours	Cal. 117-2013 NFPA 260/UFAC Class 1 ASTM E84 (Adhered) Class 1 or A BIFMA CS-191-53, Section 3 & Upholstery, Section 4 Boston Fire Dept. Code FMVSS 302 IMO A.652(16) 8.2 & 8.3 NY & NJ Port Authority	WS, Bleach Cleanable
DURANGO	78% Vinyl face, 22% Polyester backing	GREENGUARD	30 oz.	None	Soil & Stain Resistant Topcoat with Ink Resistant Technology	1,000,000^ Double Rubs	650 hours	Cal. 117-2013 NFPA 260/UFAC Class 1 BIFMA Boston Fire Dept. Code FAA/FAR 25.853(a) & Appd. F Part I(a)(ii) Fed. Spec. CID A-A-2950/ supercedes CCC-A-680A FMVSS 302 NFPA 701 NY & NJ Port Authority	WS, Bleach Cleanable, CFC
ESSENCE <i>Directional</i>	80% Vinyl Phthalate Free face, 20% Polyester backing	GREENGUARD	30 oz.	None	Soil & Stain Resistant Topcoat with Ink Resistant Technology	250,000^ Double Rubs	200 hours	Cal. 117-2013 NFPA 260/UFAC Class 1	WS, Bleach Cleanable
MINGLE <i>Directional</i>	80% Vinyl Phthalate Free face, 20% Polyester backing	GREENGUARD	30 oz.	None	Soil & Stain Resistant Topcoat with Ink Resistant Technology	250,000^ Double Rubs	300 hours	Cal. 117-2013 NFPA 260/UFAC Class 1 FMVSS 302	WS, Bleach Cleanable

REDUCED ENVIRONMENTAL IMPACT

These products are GREENGUARD Certified for low chemical and particle emissions to UL standard UL 2818 and may contribute to LEED certification. For complete information visit mayerfabrics.com and UL.com/gg.

Caressa
Tris Free Phalates DNHP, BBP, and DEP Free

Essence, Mingle
No FR additives
21P Phthalate Free (includes all Phthalates listed in CAL Prop 65 & CPSIA)
Lead Free
BPA Free/TRIS Free/Formaldehyde Free
Does not contain Conflict Minerals

CARE AND CLEANING INFORMATION

CFC: Coated Fabrics Cleaning – Refer to Mayer website for complete cleaning info.

WS: Water/Solvent Cleaner

Bleach Cleanable – 1 part bleach, 9 parts water = 10% bleach, 90% water solution. Do not clean/disinfect fabric for longer than 10 minutes using the 10% bleach solution. Always rinse promptly with clean water after applying the bleach solution. Failure to do so will void any and all warranties.

For additional care and cleaning information by pattern, please refer to the Mayer Fabrics website.

ADDITIONAL INFORMATION

CAL TB 133: All patterns may comply with California Technical Bulletin 133 when combined with appropriate components.

^Abrasion: Multiple factors affect fabric durability and appearance retention, including end-user application and proper maintenance. Wyzenbeek results above 100,000 double rubs have not been shown to be a reliable indicator of increased fabric lifespan.

Custom Capabilities: All patterns can be custom colored. Minimum yardage applies.

Specifications: Specifications are correct at the time of printing. Additional specifications are available on our website.



These fabrics meet or exceed these ACT performance guidelines.
Certification Marks owned by ACT

kwalu®

Designed to Last®



MAYERFABRICS

† 877-MY KWALU
www.kwalu.com

† 317.267.2626 or 800.428.4415 † 317.267.2629 or 877.7SAMPLE
www.mayerfabrics.com
©2017 Mayer-Paetz, Inc.

KVCCD
50917