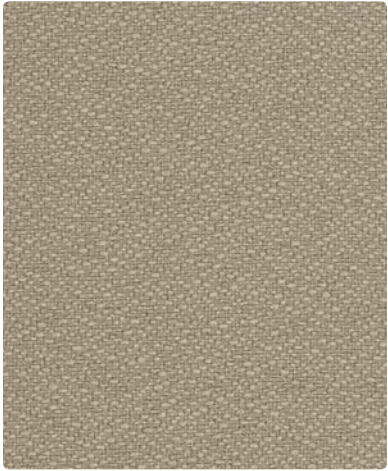


Panel Fabric

TACKBOARD FABRICS

BASIC



162-010 Earth



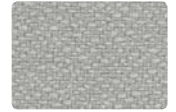
162-007
Parchment



162-017
Sand



162-003
Patina



162-026
Fog



162-027
Taupe



162-002
Caramel



162-014
Blue Mist



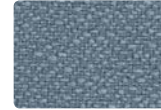
162-016
Shadow



162-000
Pumice



162-009
Mesa



162-004
Denim



162-006
Ebony

FRESCO



163-000 Earth



163-007
Parchment



163-009
Raffia



163-014
Blue Mist



163-016
Fog



163-017
Sand



163-003
Patina



163-004
Sky



163-006
Pewter

STRATA



164-010 Cliff



164-007
Ecrú



164-020
Pumice



164-017
Raffia



164-003
Patina



164-014
Cerulean



164-004
Horizon



164-006
Zinc



164-000
Bark

TECHNICAL INFORMATION

Tackboard Fabrics

Pattern 66"	Content	Certifications	Weight/ Linear Yd.	Pattern Repeat	Finish	Light Fastness	Flammability	Cleaning Code
BASIC	100% Recycled Polyester (65% Pre-/35% Post-Consumer)	GREENGUARD Gold	9.8 oz.	None	None	40 hours	ASTM E84 (Unadhered) Class 1 or A	WS
FRESCO <i>Directional</i>	100% Post-Consumer Recycled Polyester	GREENGUARD Gold	10 oz.	None	None	40 hours	ASTM E84 (Unadhered) Class 1 or A	WS
STRATA <i>Directional</i>	100% Post-Consumer Recycled Polyester	GREENGUARD Gold	10 oz.	7" H, 8.875" V Non-Matching	None	40 hours	ASTM E84 (Unadhered) Class 1 or A	WS

REDUCED ENVIRONMENTAL IMPACT

Recycled Content

These products are GREENGUARD Gold Certified for low chemical and particle emissions to UL standard UL 2818 and may contribute to LEED certification. For complete information visit mayerfabrics.com and UL.com/gg.



The Eco System icon indicates 100% recycled content.

CLEANING INFORMATION

WS: Water/Solvent Cleaner – Spot clean, with a mild solvent, an upholstery shampoo, or the foam from a mild detergent. When using a solvent or dry cleaning product, follow instructions carefully and clean only in a well-ventilated room. Avoid any product that contains carbon tetrachloride or other toxic materials. With either method, pretest a small area before proceeding.

ADDITIONAL INFORMATION

Custom Capabilities: All patterns can be custom colored. Minimum yardage applies.

Digital Swatch Card Color Matching: Due to color variations on different monitors and color printers, actual swatch colors may vary slightly. Please request a memo sample from Mayer Fabrics to ensure proper color representation.

Specifications: Specifications are correct at the time of printing. Additional specifications are available on our website.



These fabrics meet or exceed these ACT performance guidelines.
Certification Marks owned by ACT



This 100% polyester fabric is included in the Underwriter's Laboratory Fabric Recognition Program. Additional testing of this U.L. recognized component is not required on approved panels from participating manufacturers.

krug
TEXTILES

