

Kimball® Health

 **MAYER** FABRICS

Performance



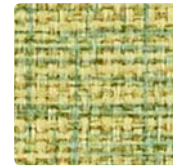
**MINGLE**  
MG-009 Melon



MG-002  
Straw



MG-026  
Cloud



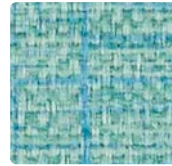
MG-003  
Aloe



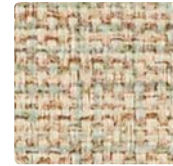
MG-047  
Oyster



MG-019  
Persimmon



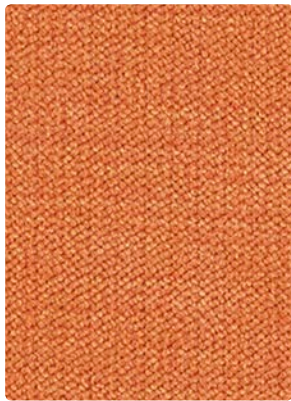
MG-023  
Turquoise



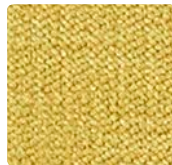
MG-027  
Hemp



MG-036  
Rain



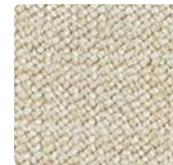
**COSMOPOLITAN**  
WC968-009 Tangerine



WC968-002  
Marigold



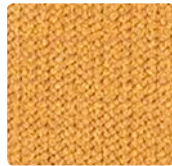
WC968-014  
Horizon



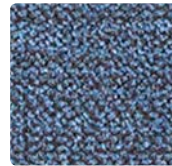
WC968-007  
Ecu



WC968-016  
Mist



WC968-019  
Saffron



WC968-004  
Denim



WC968-003  
Opal



WC968-017  
Oatmeal



**SUNA**  
437-001 Vermillion



437-003  
Leaf



437-009  
Mandarin



437-014  
Niagara



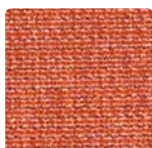
437-007  
Chamois



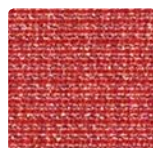
437-004  
Denim



437-006  
Coal



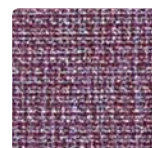
**ESSENCE**  
ES-009 Persimmon



ES-011  
Tomato



ES-001  
Port



ES-005  
Plum



ES-014  
Indigo



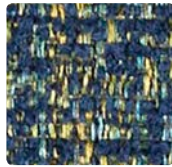
ES-023  
Sea

Additional colors are available. Please refer to the Mayer Fabrics website.





**LAVISH**  
WC969-009 Ember



WC969-004  
**Lagoon**



WC969-014  
**Turquoise**



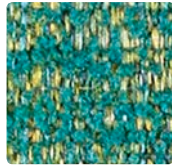
WC969-002  
**Sunflower**



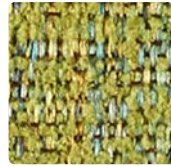
WC969-007  
**Ecrú**



WC969-005  
**Wildberry**



WC969-013  
**Peacock**



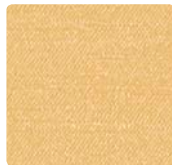
WC969-003  
**Avocado**



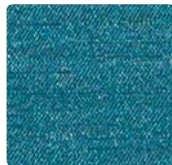
WC969-010  
**Pecan**



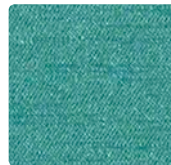
**MATKA**  
MT-009 Harvest



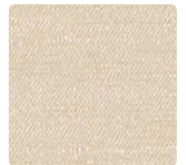
MT-002  
**Chamois**



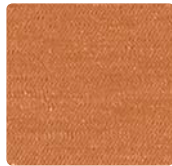
MT-014  
**Cerulean**



MT-023  
**Peacock**



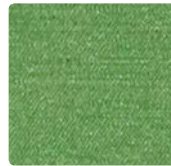
MT-007  
**Champagne**



MT-019  
**Sepia**



MT-004  
**Lapis**



MT-003  
**Clover**



MT-036  
**Titanium**



**CIRQUE**  
CI-009 Firecracker



CI-019  
**Amber**



CI-007  
**Driftwood**



CI-024  
**Aqua**



CI-003  
**Avocado**



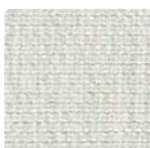
CI-004  
**Regatta**



CI-016  
**Dusk**



**ESSENCE**  
ES-013 Citron



ES-026  
**Pearl**



ES-017  
**Stone**



ES-016  
**Metal**



ES-000  
**Cocoa**



ES-010  
**Truffle**

Additional colors are available. Please refer to the Mayer Fabrics website.

# TECHNICAL INFORMATION

## Performance

Pattern 54"	Content and Backing	Certifications	Weight/ Linear Yd.	Pattern Repeat	Finish	Abrasion Wyzenbeek	Light-Fastness	Flammability	Cleaning Code
<b>CIRQUE</b> <i>Directional</i>	81% Vinyl face, 19% Polyester backing	GREENGUARD	30 oz.	18" H, 18" V	Soil & stain resistant topcoat with ink resistant technology	100,000 Double Rubs	1000 hours	Cal. 117-2013 NFPA 260/UFAC Class 1 Boston Fire Dept. Code IMO FTP 2010 Part 8, 3.1 & 3.2 NY&NJ Port Authority	Bleach cleanable, CFC
<b>COSMOPOLITAN</b> <i>Directional</i>	88% Polyester, 12% Nylon Backing: Crypton	GREENGUARD Gold	19.28 oz.	None	Crypton® with Antimicrobial Silver Ion Technology	100,000 Double Rubs	40 hours	Cal. 117-2013 NFPA 260/UFAC Class 1	C, Bleach Cleanable
<b>ESSENCE</b> <i>Directional</i>	80% Vinyl Phthalate Free face, 20% Polyester backing	GREENGUARD	30 oz.	None	Soil & stain resistant topcoat with ink resistant technology	250,000 <sup>^</sup> Double Rubs	200 hours	Cal. 117-2013 NFPA 260/UFAC Class 1	WS, Bleach Cleanable
<b>LAVISH</b> <i>Directional</i>	100% Polyester Backing: Crypton®	GREENGUARD Gold	22.98 oz.	None	Crypton® with Antimicrobial Silver Ion Technology	79,000 Double Rubs	40 hours	Cal. 117-2013 NFPA 260/UFAC Class 1	C, Bleach Cleanable
<b>MATKA</b> <i>Directional</i>	80% Vinyl Phthalate (21P) Free face, 20% Polyester backing	GREENGUARD	30 oz.	Non-Matching	Soil & stain resistant topcoat with ink resistant technology	250,000 <sup>^</sup> Double Rubs	500 hours	Cal. 117-2013 NFPA 260/UFAC Class 1 ASTM E84 (Unadhered) Class 1 or A IMO FTP 2010 Part 8, 3.1 & 3.2	WS, Bleach Cleanable
<b>MINGLE</b> <i>Directional</i>	80% Vinyl Phthalate Free face, 20% Polyester backing	GREENGUARD	30 oz.	None	Soil & stain resistant topcoat with ink resistant technology	250,000 <sup>^</sup> Double Rubs	300 hours	Cal. 117-2013 NFPA 260/UFAC Class 1	WS, Bleach Cleanable
<b>SUNA</b> <i>Directional</i>	80% Solution-Dyed Pre-Consumer Recycled Nylon, 20% Solution-Dyed Nylon Backing: Acrylic	GREENGUARD Gold	17.14 oz.	3.688" H, 7" V	Stain Repellent – PFOA & PFOS Free	150,000 <sup>^</sup> Double Rubs	200 hours	Cal. 117-2013 NFPA 260/UFAC Class 1	WS, Bleach Cleanable

**REDUCED ENVIRONMENTAL IMPACT** Reference [kimballhealth.com](http://kimballhealth.com) or [mayerfabrics.com](http://mayerfabrics.com) for details.



These products are GREENGUARD Certified or GREENGUARD Gold Certified for low chemical and particle emissions to UL standard UL 2818 and may contribute to LEED certification. For complete information visit [mayerfabrics.com](http://mayerfabrics.com) and [UL.com/gg](http://UL.com/gg).

### CARE AND CLEANING INFORMATION

C: Crypton® Cleaning

WS: Water/Solvent Cleaner

CFC: Coated Fabrics Cleaning – Refer to Mayer website for complete cleaning info.

Bleach Cleanable – 1 part bleach, 9 parts water = 10% bleach, 90% water solution. Do not clean/disinfect fabric for longer than 10 minutes using the 10% bleach solution. Always rinse promptly with clean water after applying the bleach solution. Failure to do so will void any and all warranties.

For additional care and cleaning information by pattern, please refer to the Mayer Fabrics website.

### ADDITIONAL INFORMATION

<sup>^</sup>**Abrasion:** Multiple factors affect fabric durability and appearance retention, including end-user application and proper maintenance. Wyzenbeek results above 100,000 double rubs have not been shown to be a reliable indicator of increased fabric lifespan.

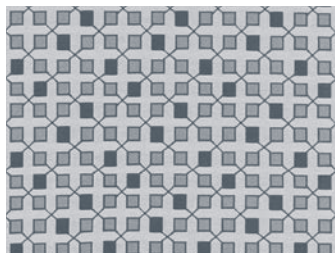
**Specifications:** Specifications are correct at the time of printing. Current detailed specifications are available on our website.



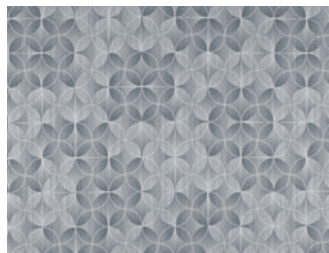
These fabrics meet or exceed these ACT performance guidelines. \*Certification Marks owned by ACT\*



Cosmopolitan, Lavish  
**CRYPTON**



SUNA – Approx. Repeat: 3.688" H, 7" V



CIRQUE – Repeat: 18" H, 18" V

Kimball® Health

[kimballhealth.com](http://kimballhealth.com)

1600 Royal Street, Jasper, IN 47549  
800.482.1818 Fax 812.482.8300  
©Kimball International, Inc. 2017  
Printed in the USA  
Form No. SCMAYPER  
A Unit of Kimball International  
2017

**TexTile3D™**  
by Mayer Fabrics

For additional colors, pre-approved patterns, grade-ins, samples and specifications, please refer to the Mayer TexTile3D link.



**MAYERFABRICS**

† 317.267.2626 or 800.428.4415  
F 317.267.2629 or 877.7SAMPLE  
[mayerfabrics.com](http://mayerfabrics.com)  
©2017 Mayer-Paetz, Inc.

KHFCCD  
50817