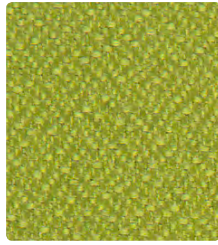
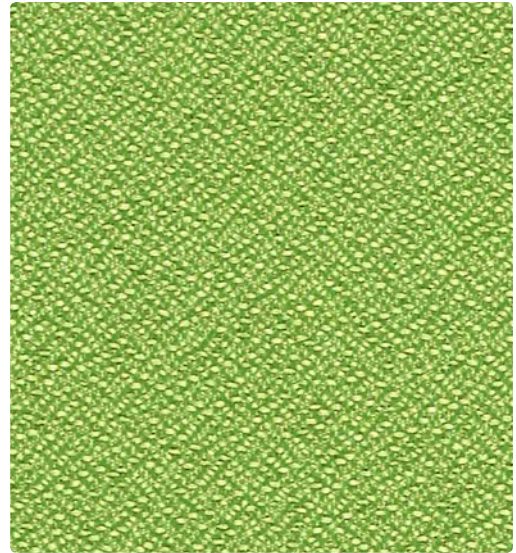


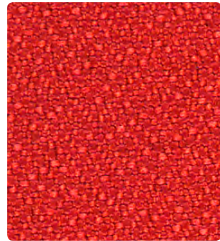
298-012  
Sunray



298-013  
Avocado



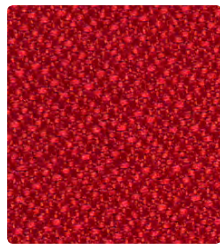
298-053  
Grass



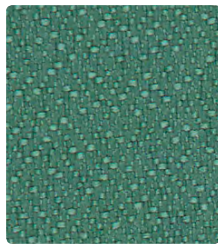
298-009  
Pimento



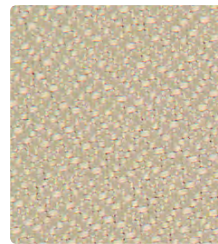
298-043  
Hedge



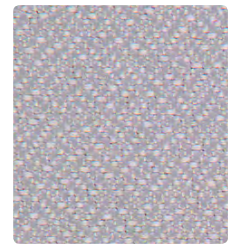
298-001  
Rouge



298-033  
Fairway



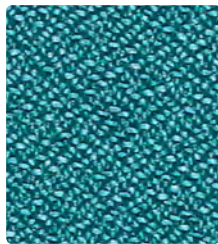
298-017  
Pumice



298-026  
Flint



298-011  
Port



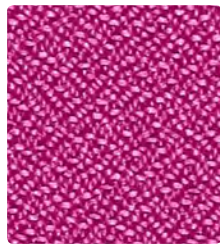
298-044  
Peacock



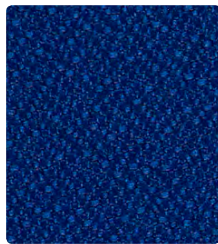
298-027  
Oatmeal



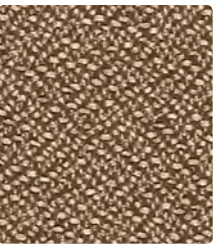
298-036  
Char



298-035  
Magenta



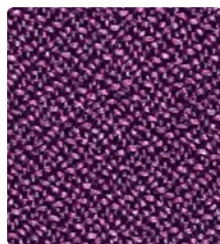
298-014  
Blue Ray



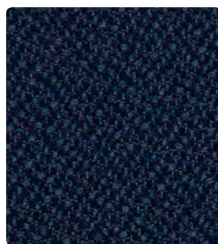
298-010  
Mocha



298-016  
Slate



298-025  
Grape



298-004  
Cadet



298-000  
Fudge



298-006  
Tuxedo

**Application**  
Upholstery Seating

**Content**  
100% Polyester

**Width**  
54 inches

**Abrasion** (Wyzenbeek/Cotton Duck)  
Passes 183,000 Double Rubs

**Finish**  
Stain Repellent

**Reduced Environmental Impact**  
GREENGUARD Gold Certified

**TECHNICAL INFORMATION**

Content: 100% Polyester

Width: 54"

Backing: Acrylic

Approx. Repeat: None

Weight: 12.10 oz./linear yard

Finish: Stain Repellent

Directional: No

Railroaded: No

**PERFORMANCE**

Surface Abrasion: Heavy Duty ASTM D 4157  
(Wyzenbeek/Cotton Duck)

Pilling Resistance ASTM D 3511

Colorfastness to Crocking AATCC-8

Colorfastness to Light AATCC 16

**Results**

Passes 183,000 Double Rubs Multiple factors affect fabric durability and appearance retention, including end-user application and proper maintenance. Wyzenbeek results above 100,000 double rubs have not been shown to be a reliable indicator of increased fabric lifespan.

Class 5

Dry: Class 4 min / Wet: Class 4

Class 5 at 40 hours

**FLAMMABILITY**

California Technical Bulletin 117-2013

NFPA 260/UFAC Class 1

ASTM E84 (Adhered) Class 2 or B

May comply with California Technical Bulletin 133 when combined with appropriate components.

**REDUCED ENVIRONMENTAL IMPACT**

This product is **GREENGUARD Gold Certified for low chemical and particle emissions to UL standard UL 2818 and may contribute to LEED certification.** For complete information visit [mayerfabrics.com](http://mayerfabrics.com) and [UL.com/gg](http://UL.com/gg).

**CLEANING INFORMATION**

WS: Water/Solvent Cleaner

**ADDITIONAL INFORMATION**

**Custom Capabilities:** All patterns can be custom colored. Minimum yardage applies.

**Digital Swatch Card Color Matching:** Due to color variations on different monitors and color printers, actual swatch colors may vary slightly. Please request a memo sample from Mayer Fabrics to ensure proper color representation.

**Specifications:** Specifications are correct at the time of printing. Current specifications are available on our website.



This fabric meets or exceeds these ACT performance guidelines. \*Certification Marks owned by ACT\*



Water and Stain Repellent Finish



This 100% polyester fabric is included in the Underwriter's Laboratory Fabric Recognition Program. Additional testing of this U.L. recognized component is not required on approved panels from participating manufacturers.



**MAYERFABRICS**