



398-014 Moody Blue



398-002 Chrysalis



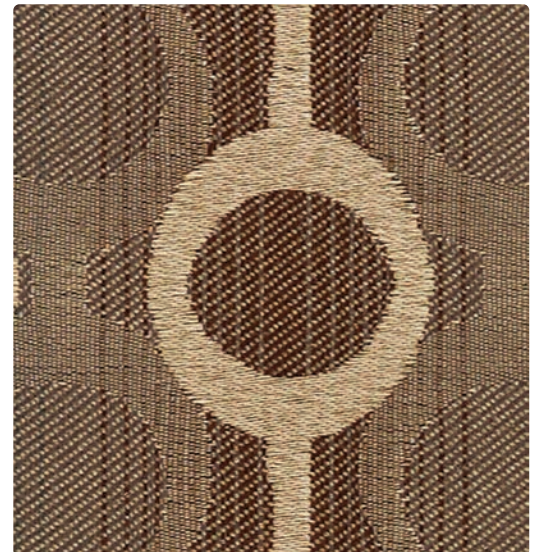
398-003 Limeade



398-013 Oasis



398-004 Tattoo



398-000 Honeycomb

Application
Seating

Content
100% Polyester

Width
54 inches

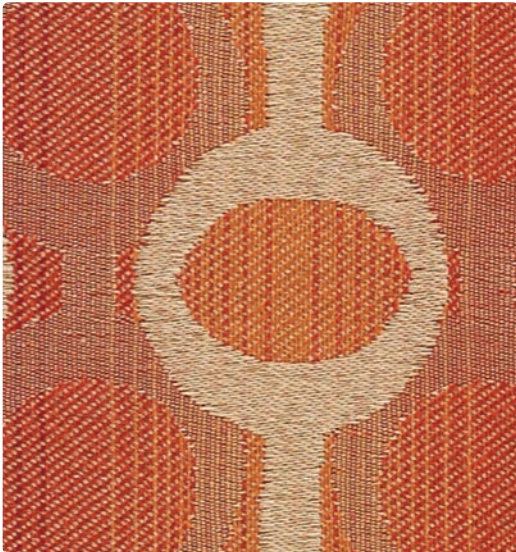
Abrasion
Passes 60,000 Double Rubs

Finish
Stain Repellent

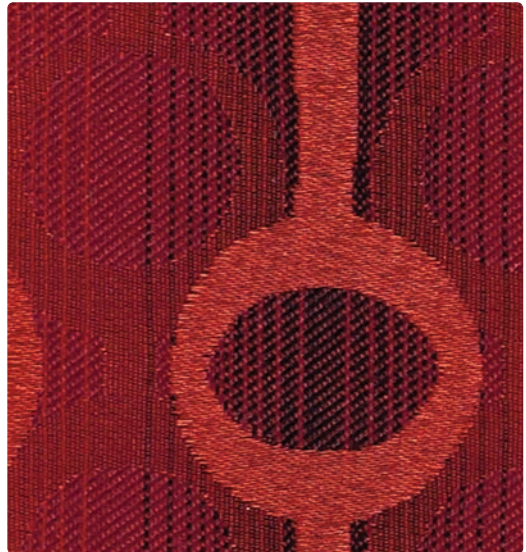
Reduced Environmental Impact
GREENGUARD Gold Certified



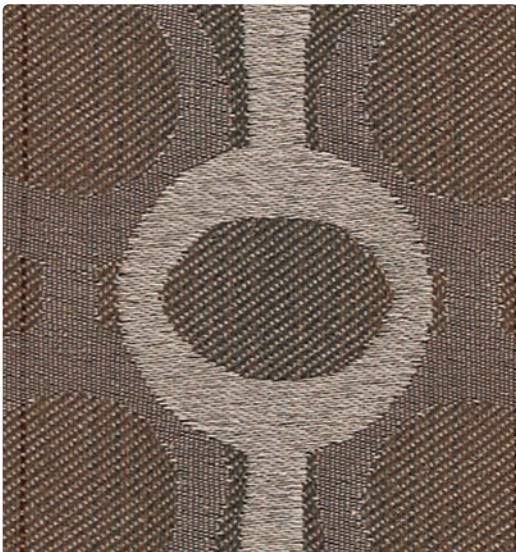
398-007 Sea Salt



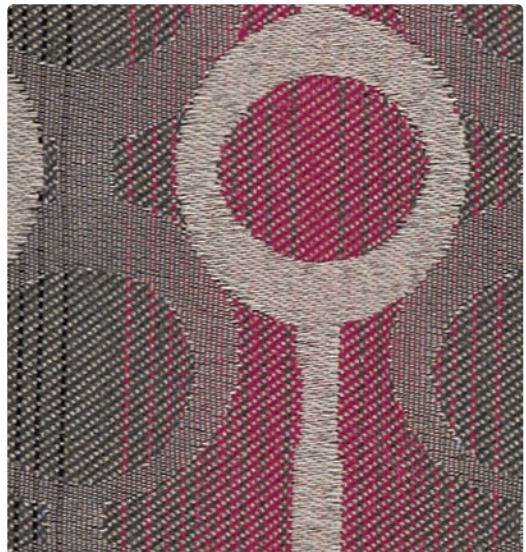
398-009 Fruit Punch



398-001 Cardinal



398-006 Java



398-016 Cyberspace

TECHNICAL INFORMATION

Content: 100% Polyester
 Width: 54"
 Weight: 15.392 oz./linear yd.

Backing: Acrylic
 Finish: Stain Repellent
 Cleaning Code: WS, BC

Approx. Repeat: 3.625" H, 4.375" V
 Directional: Yes
 Shown Railroaded: Yes

PERFORMANCE (Certification Marks Owned by ACT.)

| Test Method | Results |
|---|--|
| Surface Abrasion: Heavy Duty A * | ASTM D 4157 (Cotton Duck) Passes 60,000 Double Rubs |
| Breaking Strength: ✂* | ASTM D 5034 (Grab Test) Warp 157 lbs/Fill 164 lbs |
| Seam Slippage: ✂* | ASTM D 4034 Warp 77 lbs/Fill 78 lbs |
| Pilling Resistance: ✂* | ASTM D 3511 Class 5 |
| Colorfastness to Crocking: ●* | AATCC 8 Dry: Class 4 min / Wet: Class 3 min |
| Colorfastness to Light: ★* | AATCC 16 Class 4 min at 40 hours |

FLAMMABILITY 

California Technical Bulletin 117-2013 Passes
 NFPA 260 (Equivalent to UFAC) Class 1 Passes
 May comply with California Technical Bulletin 133 when combined with appropriate components.

REDUCED ENVIRONMENTAL IMPACT

GREENGUARD Gold Certified products are tested for low chemical emissions to standard UL 2818. For more information, visit UL.com/gg.

CLEANING INFORMATION

WS: Water/Solvent Cleaner – Spot clean with a mild solvent, an upholstery shampoo, or the foam from a mild detergent. When using a solvent or dry cleaning product, follow instructions carefully and clean only in a well-ventilated room. Avoid any product that contains carbon tetrachloride or other toxic materials. With either method, pretest a small area before proceeding. Always rinse promptly with clean water.

BC: Bleach Cleanable - 1 part bleach, 9 parts water = 10% bleach, 90% water solution. Do not clean/disinfect fabric for longer than 10 minutes using the 10% bleach solution. Always rinse promptly with clean water after applying the bleach solution. Failure to do so will void any and all warranties.

ADDITIONAL INFORMATION

Custom Capabilities: All patterns can be custom colored. Minimum yardage applies.

Memo Samples: Please keep this card intact. Individual memo samples can be ordered on our website or by contacting customer service.

Fabric Color Matching: Mayer Fabrics always attempts to ship a satisfactory commercial match. Because of industry standard dye lot variation, colors may not match exactly.

Digital Swatch Card Color Matching: Due to color variations on different monitors and color printers, actual swatch colors may vary slightly. Please request a memo sample from Mayer Fabrics to ensure proper color representation.

Specifications: Specifications are correct at the time of printing. Current specifications are available on our website.

For information or assistance with products or services, call us at 800.428.4415 or refer to our website, www.mayerfabrics.com.



Water and Stain
Repellent Finish



MAYERFABRICS

GSA Contract #GS-28F-0022P