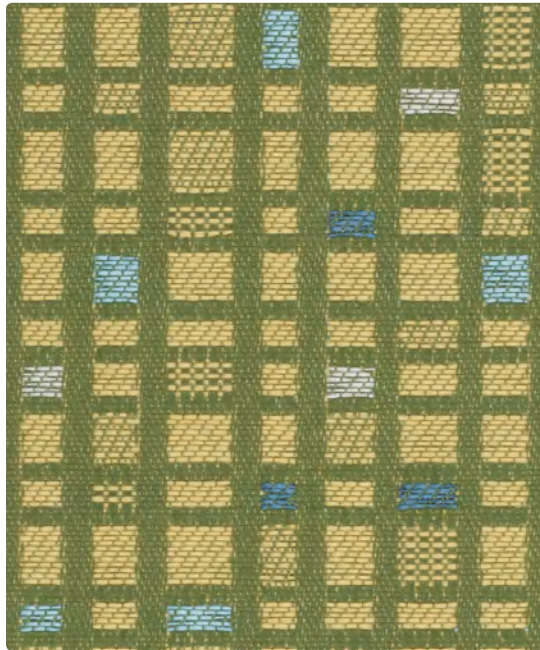




LONG TERM CARE COORDINATES



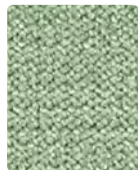
MAYERFABRICS



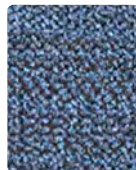
SOCIAL NETWORK
WC960-003 Springtime



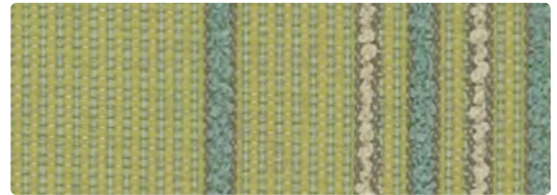
COSMOPOLITAN
WC968-007 Ecrú



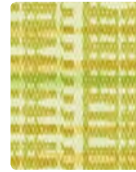
COSMOPOLITAN
WC968-003 Opal



COSMOPOLITAN
WC968-004 Denim



BIG TOP
WC961-003 Limeade



CATWALK
CW-003 Citrus



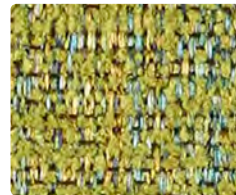
CATWALK
CW-034 Aquamarine



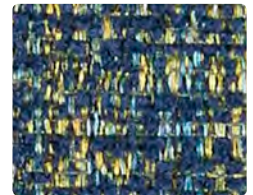
CATWALK
CW-004 Sapphire



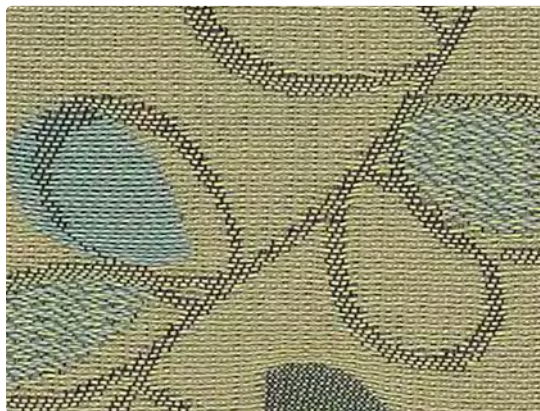
CIRQUE
CI-024 Aqua



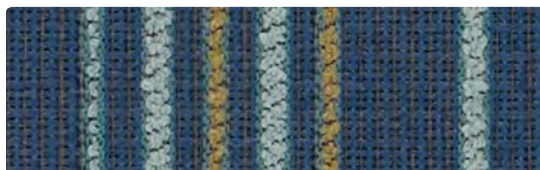
LAVISH
WC969-003 Avocado



LAVISH
WC969-004 Lagoon



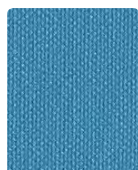
WHIMSY
WC734-014 Opal



BIG TOP
WC961-004 Blueberry



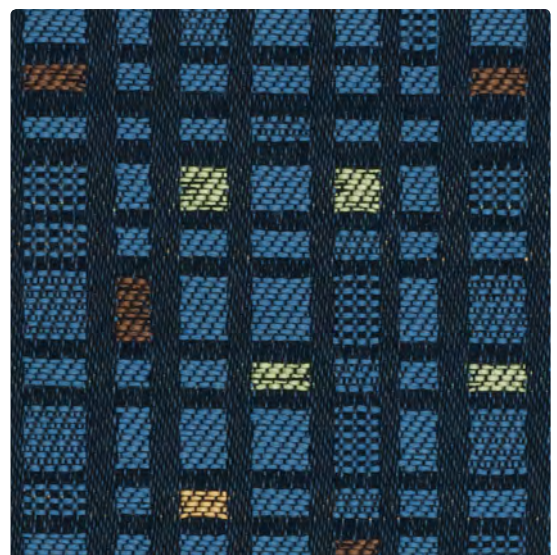
SILVERWEAVE
SW-063 Pear



SILVERWEAVE
SW-034 Cyan



SILVERWEAVE
SW-004 Indigo



SOCIAL NETWORK
WC960-004 Delft

Additional colors are available. Please refer to the Mayer Fabrics website.



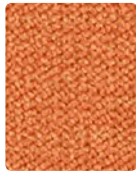
SOCIAL NETWORK
WC960-002 Solar



COSMOPOLITAN
WC968-002 Marigold



COSMOPOLITAN
WC968-012 Lemongrass



COSMOPOLITAN
WC968-009 Tangerine



BIG TOP
WC961-002 Sawdust



CATWALK
CW-002 Marigold



CATWALK
CW-009 Cinnamon



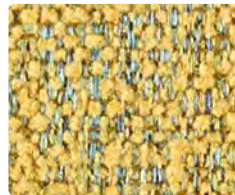
CATWALK
CW-010 Mushroom



CIRQUE
CI-019 Amber



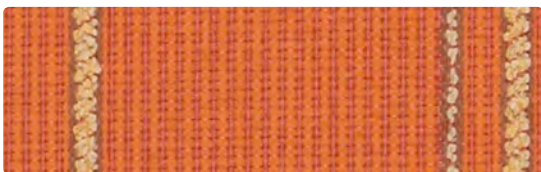
CIRQUE
CI-009 Firecracker



LAVISH
WC969-002 Sunflower



LAVISH
WC969-009 Ember



BIG TOP
WC961-009 Dreamsicle



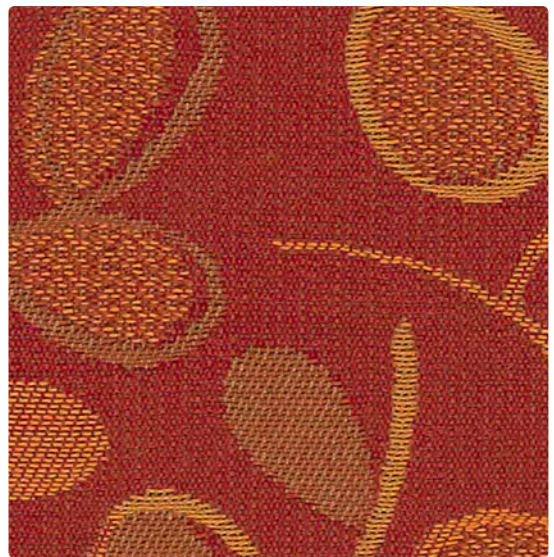
SILVERWEAVE
SW-002 Sienna



SILVERWEAVE
SW-039 Bittersweet



SILVERWEAVE
SW-009 Cayenne



WHIMSY
WC734-009 Paprika

Additional colors are available. Please refer to the Mayer Fabrics website.



WHIMSY
WC734-007 Sandalwood



COSMOPOLITAN
WC968-014 Horizon



COSMOPOLITAN
WC968-017 Oatmeal



COSMOPOLITAN
WC968-010 Granite



SOCIAL NETWORK
WC960-007 Marble



BIG TOP
WC961-014 Sky Blue



SILVERWEAVE
SW-007 Camel



SILVERWEAVE
SW-010 Walnut



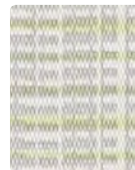
SILVERWEAVE
SW-020 Mica



BIG TOP
WC961-007 Popcorn



CATWALK
CW-007 Raffia



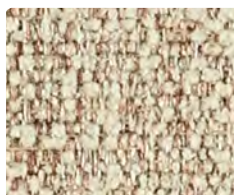
CATWALK
CW-026 Limestone



CATWALK
CW-016 Cobblestone



CIRQUE
CI-007 Driftwood



LAVISH
WC969-007 Ecu

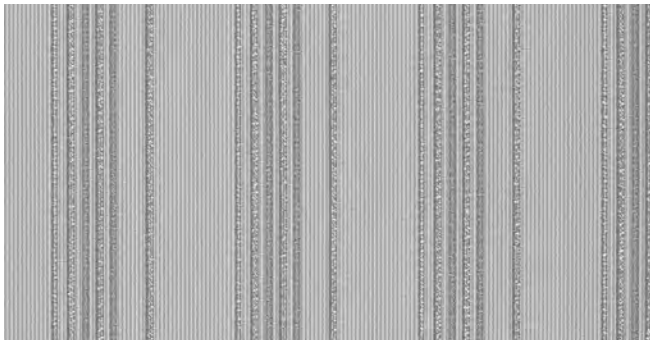


LAVISH
WC969-026 Cloud

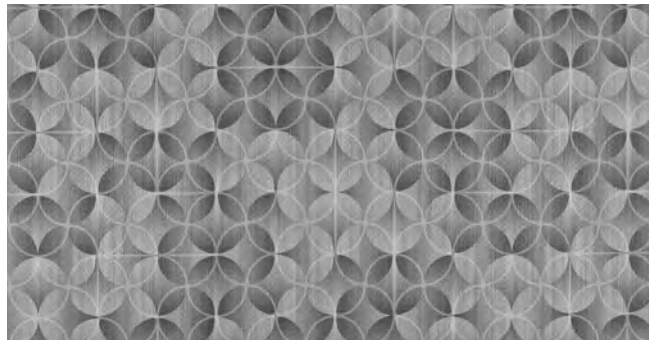


WHIMSY
WC734-000 Dusk

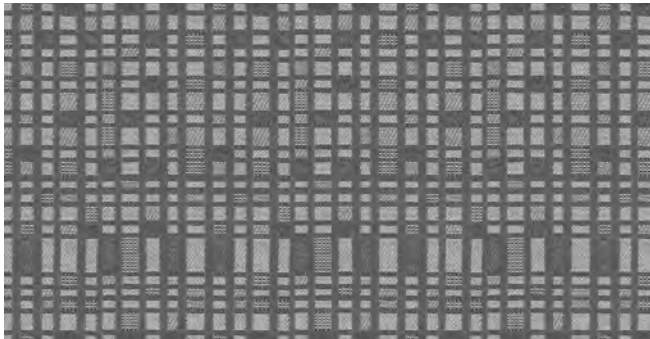
Additional colors are available. Please refer to the Mayer Fabrics website.



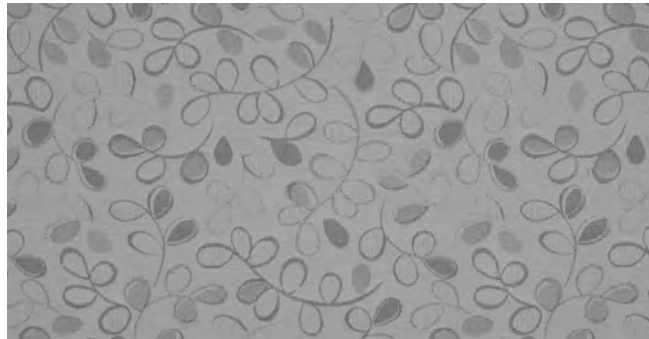
BIG TOP – Repeat: 3.875" H, 0" V – Shown Railroaded



CIRQUE – Repeat: 18" H, 18" V



SOCIAL NETWORK – Repeat: 3.5" H, 6" V



WHIMSY – Repeat: 13.5" H, 13.5" V

REDUCED ENVIRONMENTAL IMPACT

These products are GREENGUARD Certified or GREENGUARD Gold Certified for low chemical and particle emissions to UL standard UL 2818 and may contribute to LEED certification. For complete information visit mayerfabrics.com and UL.com/gg.

Big Top, Whimsy
Recycled Content

CARE AND CLEANING INFORMATION

Big Top, Cosmopolitan, Lavish, Social Network, Whimsy

C: Crypton® Cleaning

Big Top, Catwalk, Cirque, Cosmopolitan, Lavish, SilverWeave, Social Network, Whimsy

BC: Bleach Cleanable – 1 part bleach, 9 parts water = 10% bleach, 90% water solution. Do not clean/disinfect fabric for longer than 10 minutes using the 10% bleach solution. Always rinse promptly with clean water after applying the bleach solution. Failure to do so will void any and all warranties.

Catwalk, Cirque

PBG+® Cleaning – Remove most stains with one of the following steps:

Step 1 (baby oil, ketchup, chocolate, motor oil, olive oil, tea, coffee): If cleaned immediately, use a clean dry cotton fabric. Wipe once, careful to remove most of the stain without spreading to surrounding area. Wipe more vigorously a second time if residue remains and proceed to step 2.

Step 2 (eye shadow, crayon, grease, permanent felt tip marker, mustard, lipstick, ball point pen): If residue remains use a straight application of Formula 409® or Fantastik® spray cleaner. Wipe with a clean cloth, rinse with clean water and dry. If residue remains, proceed to step 3.

Step 3 (eye shadow, crayon, grease, permanent felt tip marker, mustard, lipstick, ball point pen): More stubborn soiling may be eliminated using a cotton fabric soaked in 91% isopropyl (rubbing) alcohol. Wipe without spreading stain to surrounding area. A second application should be applied with vigorous rubbing in a circular motion. For highly textured material, a soft toothbrush is recommended to clean valleys and crevices. Wipe with a clean cloth, rinse with water and dry.

Please refer to the Mayer Fabrics website or contact customer service for approval of unlisted cleaning agents prior to use.

PBG+® acts as an invisible barrier against stains, allowing them to be cleaned off the surface with ease and virtually no harm to the vinyl.

*Please note, that PBG+® is not "stain proof" and indelible inks, particularly those containing certain dyes used in permanent felt tip markers, can leave a shadow if cleaning is delayed beyond 24 hours.

*Results are best when cleaned within the first 24 hours of staining.

This information is not a guarantee and does not relieve the user from the responsibility of the proper and safe use of the product and all cleaning agents. The use of certain agents can be harmful to the surface appearance and lifespan of vinyl. Mayer Fabrics, its agents and assigns assume no responsibility resulting from the use of such cleaning agents to the vinyl.

Certain clothing and accessory dyes (such as those used on denim jeans) may migrate to lighter colors. This phenomenon is increased by humidity and temperature and is irreversible.

Formula 409® is a registered trademark of the Clorox Company®. Fantastik® is a trademark of DowBrands, Inc.* Trademark of the Dow Chemical Co.*

Please check compatibility when using this product in combination with painted or varnished surfaces.

SilverWeave

PERMABLOCK® Cleaning – Get rid of stains with one of the following steps:

Step 1 (eye shadow, mascara, grease, black felt tip pen, crayon, chocolate, suntan lotion): Remove excess spill with a damp cloth. Clean with a 1:1 mix of Ivory® liquid soap and water. Next, rinse with clean water and dry.

Step 2 (red lipstick): Use a straight application of concentrated cleaners such as Formula 409® or Fantastik® spray cleaner. Wipe with a clean cloth, rinse with clean water, and dry.

Step 3 (blood, urine, feces, oil base paint, tar, asphalt): Use a 1:1 mix of ammonia and water, or a 1:4 mix of bleach and water. Rinse with clean water and dry.

Steps 4 & 5 (all other tough stains): Step 4: Use a straight application of naphtha (lighter fluid). Rinse thoroughly with clean water and pat surface dry. Step 5: Use a 1:1 mix of isopropyl alcohol and water. If the stain persists, use straight alcohol. Rinse thoroughly with clean water and pat dry.

Note: For cleaning that requires step 4 or 5, use a soft cotton cloth saturated with the cleaning material and rub the stain in circles 10 times. Pat dry with another soft cotton cloth and check the results.

Please refer to the Mayer Fabrics website or contact customer service for approval of unlisted cleaning agents prior to use.

The information published in this care guide refers to the performance of **PERMABLOCK®** products in specific tests conducted under laboratory conditions. Results may vary under actual conditions.

This information is not a guarantee and does not relieve the user from the responsibility of the proper and safe use of the product and all cleaning agents. The use of certain agents can be harmful to the surface appearance and lifespan of vinyl. Mayer Fabrics, its agents, and assigns assume no responsibility resulting from the use of such cleaning agents to the vinyl.

Please check compatibility when using this product in combination with painted or varnished surfaces.

Formula 409® is a registered trademark of the Clorox Company®.

Fantastik® is a trademark of DowBrands, Inc.* Trademark of the Dow Chemical Co.*

Ivory® is a trademark of Procter and Gamble®

Mayer Fabrics is not sponsored by, affiliated with, or endorsed by such trademark owners. Additionally, any use by Mayer Fabrics of any third-party trademark does not constitute any endorsement by Mayer Fabrics of such third party.

For additional care and cleaning information by pattern, please refer to the Mayer Fabrics website.



the common thread for the Cure
Big Top was inspired by B. Jane Barea, ASID, in support of The Common Thread for the Cure Foundation. Mayer Fabrics will donate 2% of all sales to The Common Thread for the Cure.

TECHNICAL INFORMATION

Long Term Care Coordinates

Pattern 54"	Content and Backing	Certifications	Weight/ Linear Yd.	Pattern Repeat	Finish	Abrasion Wyzenbeek	Light- Fastness	Flammability	Cleaning Code
BIG TOP <i>Directional</i> <i>Railroaded</i>	6% Recycled Polyester (4% Pre-/2% Post- Consumer), 94% Polyester Backing: Crypton®	GREENGUARD Gold	15.84 oz.	3.875" H, 0" V	Crypton® with Antimicrobial Silver Ion Technology	85,000 Double Rubs	40 hours	Cal. 117-2013 NFPA 260/UFAC Class 1	C, BC
CATWALK <i>Directional</i>	81% Vinyl face, 19% Polyester backing Backing: 100% Polyester	GREENGUARD	30 oz.	18" H, 18" V	PBG+	100,000 Double Rubs	1000 hours	Cal. 117-2013 NFPA 260/UFAC Class 1 Boston Fire Dept. Code FAA/FAR 25.853(a) & Appd. F Part I(a)(ii) FMVSS 302 IMO FTP 2010 Part 8, 3.1.3.2 NY&NJ Port Authority Fed. Test Method Stnd. No. 191A, Method 5903.1	PBG+ Cleaning, BC
CIRQUE <i>Directional</i>	81% Vinyl face, 19% Polyester backing Backing: 100% Polyester	GREENGUARD	30 oz.	18" H, 18" V	PBG+	100,000 Double Rubs	1000 hours	Cal. 117-2013 NFPA 260/UFAC Class 1 Boston Fire Dept. Code FAA/FAR 25.853(a) & Appd. F Part I(a)(ii) FMVSS 302 IMO FTP 2010 Part 8, 3.1.3.2 NY&NJ Port Authority Fed. Test Method Stnd. No. 191A, Method 5903.1	PBG+ Cleaning, BC
COSMOPOLITAN <i>Directional</i>	88% Polyester, 12% Nylon Backing: Crypton®	GREENGUARD Gold	19.28 oz.	None	Crypton® with Antimicrobial Silver Ion Technology	100,000 Double Rubs	40 hours	Cal. 117-2013 NFPA 260/UFAC Class 1	C, BC
LAVISH <i>Directional</i>	100% Polyester Backing: Crypton®	GREENGUARD Gold	22.98 oz.	None	Crypton® with Antimicrobial Silver Ion Technology	79,000 Double Rubs	40 hours	Cal. 117-2013 NFPA 260/UFAC Class 1	C, BC
SILVERWEAVE <i>Directional</i>	70% Vinyl face, 30% Polyester backing Backing: 100% Polyester	GREENGUARD	30 oz.	None	PERMABLOK®	930,000^ Double Rubs	1000 hours	Cal. 117-2013 NFPA 260/UFAC Class 1 Boston Fire Dept. Code FAA/FAR 25.853(a) & Appd. F Part I(a)(ii) FMVSS 302 IMO FTP 2010 Part 8, 3.1.3.2 NFPA 701 (small scale) NY&NJ Port Authority ASTM E 662 Fed. Test Method Stnd. No. 191A, Method 5903.1	PERMABLOK® Cleaning, BC
SOCIAL NETWORK <i>Directional</i>	100% Polyester Backing: Crypton®	GREENGUARD Gold	15.29 oz.	3.5" H, 6" V	Crypton® with Antimicrobial Silver Ion Technology	70,000 Double Rubs	40 hours	Cal. 117-2013 NFPA 260/UFAC Class 1	C, BC
WHIMSY <i>Directional</i>	60% Post-Consumer Recycled Polyester, 40% Polyester Backing: Crypton Green	GREENGUARD Gold	17.79 oz.	13.5" H, 13.5" V	Crypton® Green with Antimicrobial Silver Ion Technology	50,000 Double Rubs	40 hours	Cal. 117-2013 NFPA 260/UFAC Class 1	C, BC

ADDITIONAL INFORMATION

CAL TB 133: All patterns may comply with California Technical Bulletin 133 when combined with appropriate components.

^Abrasion: Multiple factors affect fabric durability and appearance retention, including end-user application and proper maintenance. Wyzenbeek results above 100,000 double rubs have not been shown to be a reliable indicator of increased fabric lifespan.

Custom Capabilities: All patterns can be custom colored. Minimum yardage applies.

Digital Swatch Card Color Matching: Due to color variations on different monitors and color printers, actual swatch colors may vary slightly. Please request a memo sample from Mayer Fabrics to ensure proper color representation.

Specifications: Specifications are correct at the time of printing. Additional specifications are available on our website.

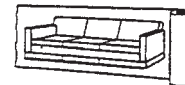


These fabrics meet or exceed these ACT performance guidelines.
Certification Marks owned by ACT

Railroaded: This feature allows reduction of seams and enables smoother furniture tailoring.



Fabric "up the roll" or "regular" position



Fabric "railroaded" or "top selvage" position

We recommend all railroaded patterns should be upholstered as shown on card.

krug
TEXTILES

