

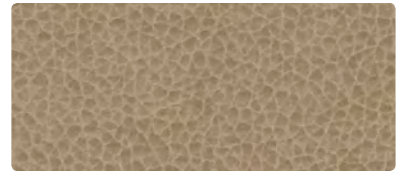
# FAUX LEATHER COORDINATES



**BOLERO**  
BO-007 Doe



**CARESSA**  
CA-027 Buff



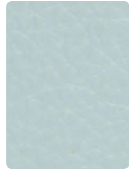
**PALERMO**  
PL-027 Buff



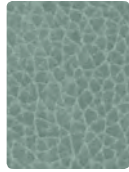
**BOLERO**  
BO-002 Jonquil



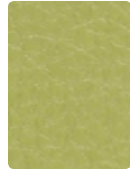
**BOLERO**  
BO-012 Butterscotch



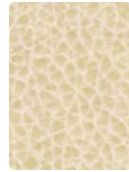
**CARESSA**  
CA-074 Spa



**PALERMO**  
PL-014 Aqua



**CARESSA**  
CA-083 Wasabi



**PALERMO**  
PL-017 Ivory



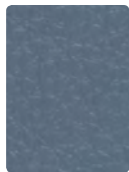
**PALERMO**  
PL-026 Dove



**PALERMO**  
PL-002 Butter



**PALERMO**  
PL-011 Poppy



**CARESSA**  
CA-064 Cerulean



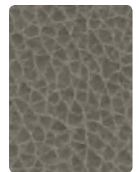
**BOLERO**  
BO-023 Aqua



**CARESSA**  
CA-073 Basil



**CARESSA**  
CA-067 Ecrú



**PALERMO**  
PL-016 Storm



**CARESSA**  
CA-029 Ochre



**BOLERO**  
BO-011 Lipstick



**BOLERO**  
BO-014 Cerulean



**CARESSA**  
CA-084 Aqua



**BOLERO**  
BO-013 Lime



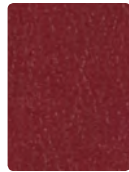
**BOLERO**  
BO-030 Mojave



**BOLERO**  
BO-026 Cliff



**PALERMO**  
PL-009 Mango



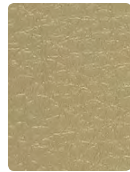
**BOLERO**  
BO-001 Paprika



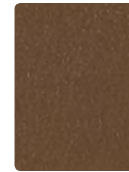
**PALERMO**  
PL-004 Sapphire



**CARESSA**  
CA-093 Bluegrass



**CARESSA**  
CA-063 Willow



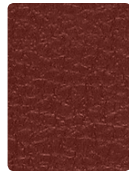
**BOLERO**  
BO-020 Toast



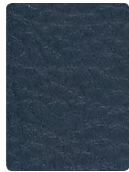
**CARESSA**  
CA-026 Granite



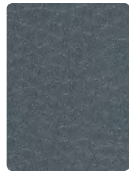
**BOLERO**  
BO-009 Terra Cotta



**CARESSA**  
CA-001 Ruby



**CARESSA**  
CA-024 Iris



**CARESSA**  
CA-044 Cadet



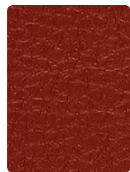
**PALERMO**  
PL-019 Tawny



**CARESSA**  
CA-046 Stone



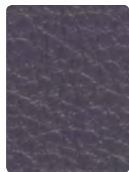
**PALERMO**  
PL-006 Ebony



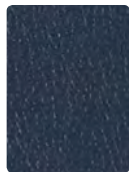
**CARESSA**  
CA-021 Red Pepper



**BOLERO**  
BO-005 Orchid



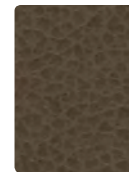
**CARESSA**  
CA-015 Lavender



**BOLERO**  
BO-004 Regatta



**PALERMO**  
PL-010 Saddle



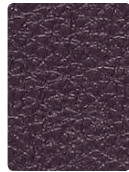
**PALERMO**  
PL-000 Java



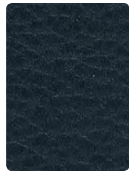
**BOLERO**  
BO-016 Charcoal



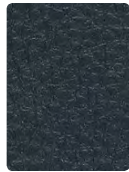
**CARESSA**  
CA-031 Brick



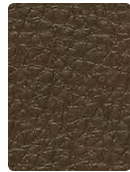
**CARESSA**  
CA-005 Aubergine



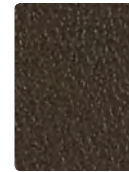
**CARESSA**  
CA-004 Navy



**CARESSA**  
CA-014 Admiral



**CARESSA**  
CA-040 Java



**BOLERO**  
BO-000 Espresso



**CARESSA**  
CA-006 Black

# TECHNICAL INFORMATION

Bolero, Caressa, Palermo

Pattern 54"	Content and Backing	Certifications	Weight/ Linear Yd	Pattern Repeat	Finish	Abrasion* Wyzenbeek	Light-Fastness*	Flammability*	Cleaning Code	Grade#
BOLERO	62% Polyurethane face - PVC FREE, 38% Polyester backing	GREENGUARD	20 oz.	None	WRITE AWAY - Soil and Stain Resistant Top Coat with Ink Resistant Technology	250,000 <sup>^</sup> Double Rubs	200 hours	Cal. 117-2013 NFPA 260 (Equiv. to UFAC) ASTM E84 Class 1 or A FMVSS 302 IMO A.652(16) 8.2 IMO FTP 2010 Part 8, 3.1	WS, BC	P
CARESSA	80% Vinyl face, 20% Polyester backing Backing: 100% Polyester	GREENGUARD	29 oz.	None	Soil and Stain Resistant Top Coat with Ink Resistant Technology	650,000 <sup>^</sup> Double Rubs	1000 hours	Cal. 117-2013 NFPA 260 (Equiv. to UFAC) ASTM E84 Class 1 or A Boston Fire Dept (BFD IX-1) FMVSS 302 IMO A.652(16) 8.2 & 8.3 NY & NJ Port Authority	WS, BC	O
PALERMO	62% Polyurethane face - PVC FREE, 38% Polyester backing	GREENGUARD	20 oz.	Non-Matching	WRITE AWAY - Soil and Stain Resistant Top Coat with Ink Resistant Technology	250,000 <sup>^</sup> Double Rubs	200 hours	Cal. 117-2013 NFPA 260 (Equiv. to UFAC) ASTM E84 Class 1 or A FMVSS 302 IMO A.652(16) 8.2 IMO FTP 2010 Part 8, 3.1	WS, BC	P

## REDUCED ENVIRONMENTAL IMPACT

GREENGUARD Certified products are tested for low chemical emissions to standard UL 2818. For more information, visit [UL.com/gg](http://UL.com/gg).

**Bolero, Palermo**

PVC FREE Lead Free Phthalate Free Heavy Metal Free Formaldehyde Free Low VOC BPA Free Non-Toxic  
99%+ of all Water and Raw Materials used in production are reclaimed and recycled Energy and Water Efficient Production

**Caressa**

Tris Free Phalates DNHP, BBP, and DEP Free

## CLEANING INFORMATION

WS: Water/Solvent Cleaner – Spot clean with a mild solvent, an upholstery shampoo, or the foam from a mild detergent. When using a solvent or dry cleaning product, follow instructions carefully and clean only in a well-ventilated room. Avoid any product that contains carbon tetrachloride or other toxic materials. With either method, pretest a small area before proceeding. Always rinse promptly with clean water.

BC: Bleach Cleanable – 1 part bleach, 9 parts water = 10% bleach, 90% water solution. Do not clean/disinfect fabric for longer than 10 minutes using the 10% bleach solution. Always rinse promptly with clean water after applying the bleach solution. Failure to do so will void any and all warranties.

**Bolero, Palermo**

Prompt cleaning is always recommended. Recommended cleaning steps are listed by type of stain.

**Regular Cleaning and Maintenance (Dirt, Grime):** Clean the soiled area with mild soap and water, then rinse with fresh water and wipe dry with a clean cloth.

**Food Stains/Oils (Mustard, Ketchup, Chocolate, Coffee/Tea, Salad Dressing):** Wipe the affected area with a soft cloth with appropriate pressure. If some stain persists, clean with mild soap and water. Rinse with fresh water and wipe dry. For stubborn stains spot clean with a 70% dilution of isopropyl alcohol and water and wipe. Rinse with fresh water and wipe dry.

**Healthcare/Disinfection (Blood, Urine, Betadine):** Wipe the affected area with a soft cloth with appropriate pressure. If some stain persists, spray it with a 70% dilution of isopropyl alcohol and water and wipe. Rinse with fresh water and wipe dry. **Disinfection:** This material withstands a 20% solution of household bleach and water. It is important to rinse the clean area with fresh water after applying the bleach solution.

**Ink Marks/Graffiti (Ball Point Pen, Permanent Marker):** Rub the affected area with a dry soft cloth with firm pressure. If some stain is still present spray it with a 70% dilution of isopropyl alcohol and water and wipe. Rinse with fresh water and wipe dry. Note: Removal of ink, particularly permanent marker, may vary depending on the period of time that the ink sets in. While this material offers excellent protection, full removal is not guaranteed.

**Denim Dye Transfer (Blue Jeans):** This material is designed to withstand the transfer of most types of indigo dye. In the case that faint dye transfer is visible, this can typically be removed with a 70% dilution of isopropyl alcohol and water. Note: Removal of indigo dye, particularly from wet jeans, may vary depending on the type of denim. While this material offers excellent protection, full removal is not guaranteed.

NOTE: The information in this cleaning guide refers to performance in specific tests conducted under laboratory conditions. This information is not a guarantee that every stain will be removed completely and some residual ghosting may be present after all the cleaning steps are followed.

Results may vary under actual conditions.

This information is not a guarantee and does not relieve the user from the responsibility of the proper and safe use of the product and all cleaning agents. The use of certain agents can be harmful to the surface appearance and lifespan of polyurethane. Mayer Fabrics, its agents, and assigns assume no responsibility resulting from the use of such cleaning agents to the polyurethane surface. Please check compatibility when using this product in combination with painted or varnished surfaces.

For additional cleaning information, please refer to the Mayer Fabrics website.

## ADDITIONAL INFORMATION

**Cal TB 133:** All patterns may comply with California Technical Bulletin 133 when combined with appropriate components.

**^Abrasion:** Multiple factors affect fabric durability and appearance retention, including end-user application and proper maintenance. Wyzenbeek results above 100,000 double rubs have not been shown to be a reliable indicator of increased fabric lifespan.

**Custom Capabilities:** All patterns can be custom colored. Minimum yardage applies.

**Digital Swatch Card Color Matching:** Due to color variations on different monitors and color printers, actual swatch colors may vary slightly. Please request a memo sample from Mayer Fabrics to ensure proper color representation.

**Specifications:** Specifications are correct at the time of printing. Current detailed specifications are available on our website.

\*Fabric grades are subject to change at any time. Please contact Integra Customer Service at 800.235.0234 x 4 or [www.integraseating.com/resources/fabrics](http://www.integraseating.com/resources/fabrics) to confirm fabric grade.



These fabrics meet or exceed these ACT performance guidelines. \*Certification Marks owned by ACT\*

# Integra<sup>®</sup>



MAYERFABRICS