



# OPEN ROAD

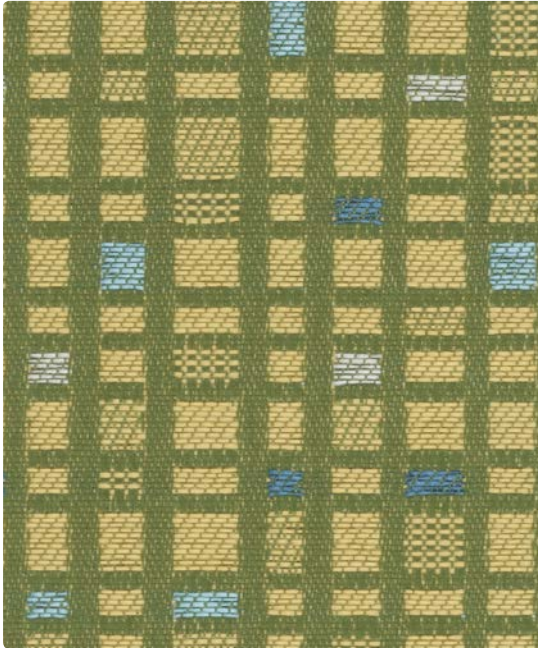
FURNISHINGS

## CRYPTON SENIOR LIVING PORTFOLIO COORDINATES

---

Woven Crypton Selections	Grade
Bigtop	4
Catwalk	2
Cosmopolitan	2
Cirque	2
Lavish	3
SilverWeave	2
Social Network	3
Whimsy	5





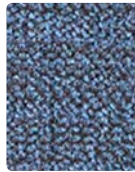
**SOCIAL NETWORK**  
WC960-003 Springtime



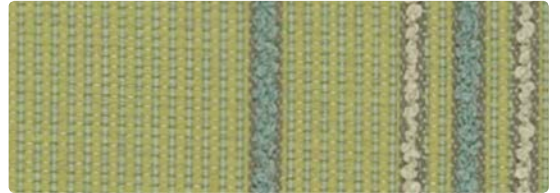
**COSMOPOLITAN**  
WC968-007 Ecrú



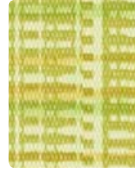
**COSMOPOLITAN**  
WC968-003 Opal



**COSMOPOLITAN**  
WC968-004 Denim



**BIG TOP**  
WC961-003 Limeade



**CATWALK**  
CW-003 Citrus



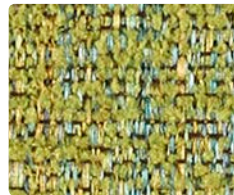
**CATWALK**  
CW-034 Aquamarine



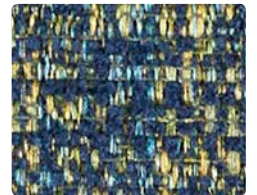
**CATWALK**  
CW-004 Sapphire



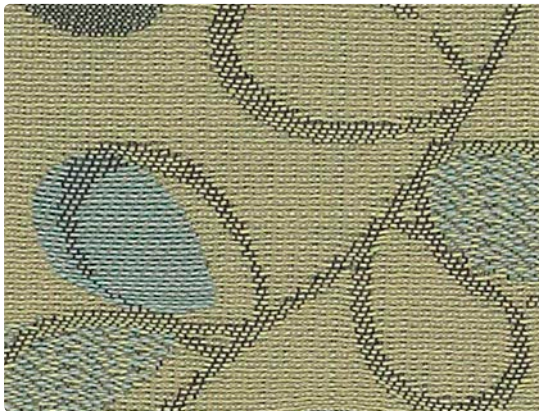
**CIRQUE**  
CI-024 Aqua



**LAVISH**  
WC969-003 Avocado



**LAVISH**  
WC969-004 Lagoon



**WHIMSY**  
WC734-014 Opal



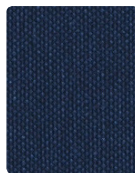
**BIG TOP**  
WC961-004 Blueberry



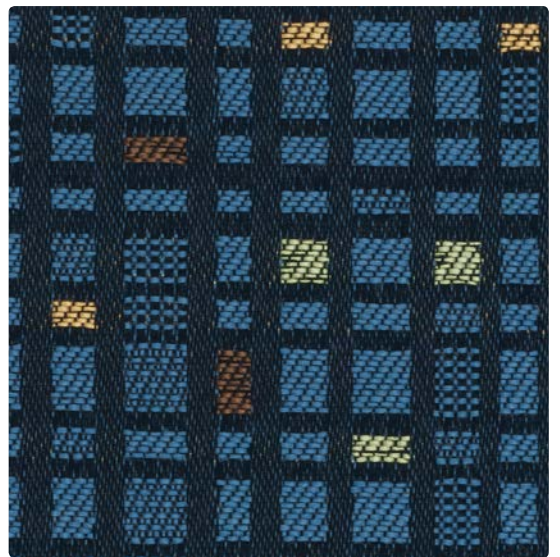
**SILVERWEAVE**  
SW-063 Pear



**SILVERWEAVE**  
SW-034 Cyan



**SILVERWEAVE**  
SW-004 Indigo



**SOCIAL NETWORK**  
WC960-004 Delft

Additional colors are available. Please refer to the Mayer Fabrics website.





**SOCIAL NETWORK**  
WC960-002 Solar



**COSMOPOLITAN**  
WC968-002 Marigold



**COSMOPOLITAN**  
WC968-012 Lemongrass



**COSMOPOLITAN**  
WC968-009 Tangerine



**BIG TOP**  
WC961-002 Sawdust



**CATWALK**  
CW-002 Marigold



**CATWALK**  
CW-009 Cinnamon



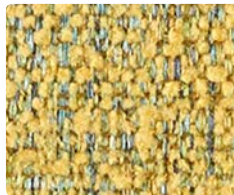
**CATWALK**  
CW-010 Mushroom



**CIRQUE**  
CI-019 Amber



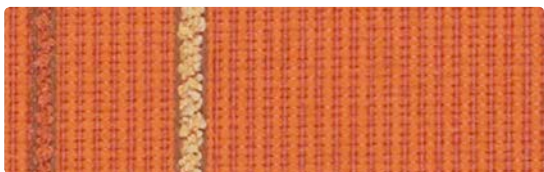
**CIRQUE**  
CI-009 Firecracker



**LAVISH**  
WC969-002 Sunflower



**LAVISH**  
WC969-009 Ember



**BIG TOP**  
WC961-009 Dreamsicle



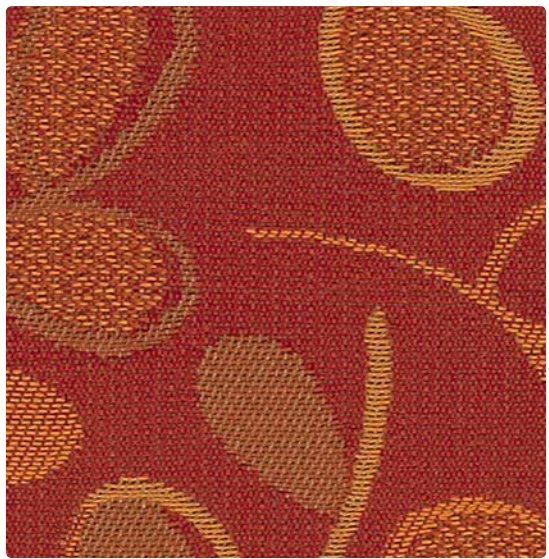
**SILVERWEAVE**  
SW-002 Sienna



**SILVERWEAVE**  
SW-039 Bittersweet



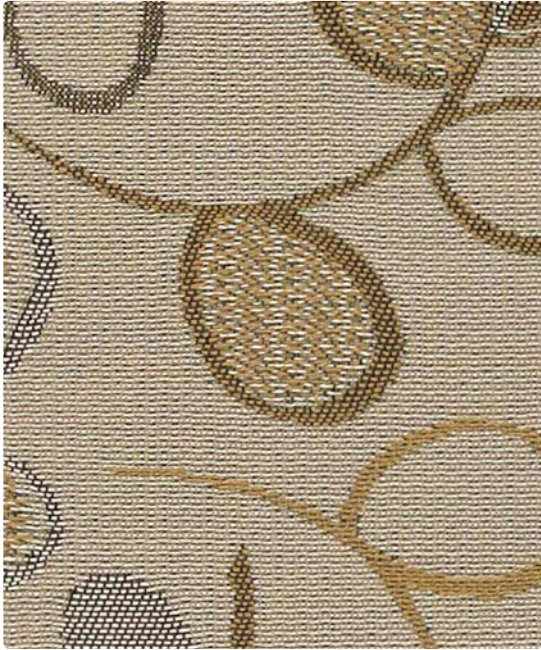
**SILVERWEAVE**  
SW-009 Cayenne



**WHIMSY**  
WC734-009 Paprika

Additional colors are available. Please refer to the Mayer Fabrics website.





**WHIMSY**  
WC734-007 Sandalwood



**COSMOPOLITAN**  
WC968-014 Horizon



**COSMOPOLITAN**  
WC968-017 Oatmeal



**COSMOPOLITAN**  
WC968-010 Granite



**SOCIAL NETWORK**  
WC960-007 Marble



**BIG TOP**  
WC961-014 Sky Blue



**SILVERWEAVE**  
SW-007 Camel



**SILVERWEAVE**  
SW-010 Walnut



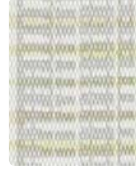
**SILVERWEAVE**  
SW-020 Mica



**BIG TOP**  
WC961-007 Popcorn



**CATWALK**  
CW-007 Raffia



**CATWALK**  
CW-026 Limestone



**CATWALK**  
CW-016 Cobblestone



**CIRQUE**  
CI-007 Driftwood



**LAVISH**  
WC969-007 Ecu

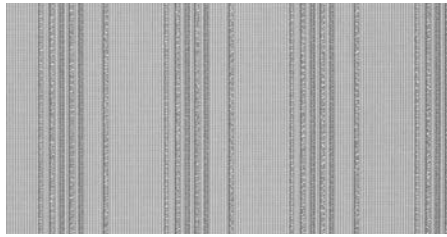


**LAVISH**  
WC969-026 Cloud

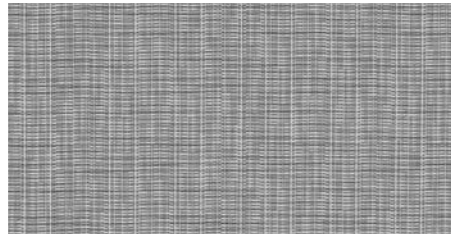


**WHIMSY**  
WC734-000 Dusk

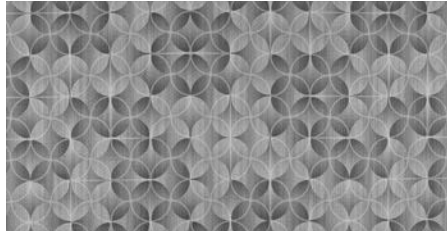




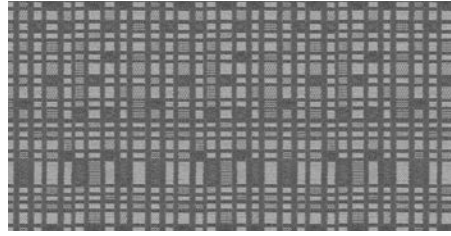
**BIG TOP** – Repeat: 2.5" H, 4" V – Shown Railroaded



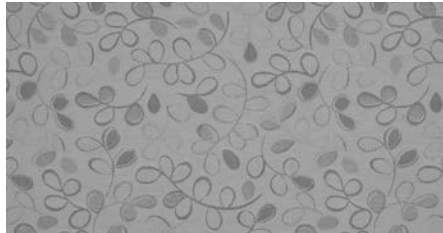
**CATWALK** – Repeat: 18" H, 18" V



**CIRQUE** – Repeat: 18" H, 18" V



**SOCIAL NETWORK** – Repeat: 3.5" H, 6" V



**WHIMSY** – Repeat: 13.5" H, 13.5" V

## REDUCED ENVIRONMENTAL IMPACT

These products are GREENGUARD Certified or GREENGUARD Gold Certified for low chemical and particle emissions to UL standard UL 2818 and may contribute to LEED certification. For complete information visit [mayerfabrics.com](http://mayerfabrics.com) and [UL.com/gg](http://UL.com/gg).

**Big Top, Whimsy**  
Recycled Content

## CARE AND CLEANING INFORMATION

**Big Top, Cosmopolitan, Lavish, Social Network, Whimsy**

C: Crypton® Cleaning

**Big Top, Catwalk, Cirque, Cosmopolitan, Lavish, SilverWeave, Social Network, Whimsy**

BC: Bleach Cleanable – 1 part bleach, 9 parts water = 10% bleach, 90% water solution. Do not clean/disinfect fabric for longer than 10 minutes using the 10% bleach solution. Always rinse promptly with clean water after applying the bleach solution. Failure to do so will void any and all warranties.

**Catwalk, Cirque**

PBG+® Cleaning – Remove most stains with one of the following steps:

Step 1 (baby oil, ketchup, chocolate, motor oil, olive oil, tea, coffee): If cleaned immediately, use a clean dry cotton fabric. Wipe once, careful to remove most of the stain without spreading to surrounding area. Wipe more vigorously a second time if residue remains and proceed to step 2.

Step 2 (eye shadow, crayon, grease, permanent felt tip marker, mustard, lipstick, ball point pen): If residue remains use a straight application of Formula 409® or Fantastik® spray cleaner. Wipe with a clean cloth, rinse with clean water and dry. If residue remains, proceed to step 3.

Step 3 (eye shadow, crayon, grease, permanent felt tip marker, mustard, lipstick, ball point pen): More stubborn soiling may be eliminated using a cotton fabric soaked in 91% isopropyl (rubbing) alcohol. Wipe without spreading stain to surrounding area. A second application should be applied with vigorous rubbing in a circular motion. For highly textured material, a soft toothbrush is recommended to clean valleys and crevices. Wipe with a clean cloth, rinse with water and dry.

Please refer to the Mayer Fabrics website or contact customer service for approval of unlisted cleaning agents prior to use.

PBG+® acts as an invisible barrier against stains, allowing them to be cleaned off the surface with ease and virtually no harm to the vinyl.

\*Please note, that PBG+® is not "stain proof" and indelible inks, particularly those containing certain dyes used in permanent felt tip markers, can leave a shadow if cleaning is delayed beyond 24 hours.

\*Results are best when cleaned within the first 24 hours of staining.

This information is not a guarantee and does not relieve the user from the responsibility of the proper and safe use of the product and all cleaning agents. The use of certain agents can be harmful to the surface appearance and lifespan of vinyl. Mayer Fabrics, its agents and assigns assume no responsibility resulting from the use of such cleaning agents to the vinyl.

Certain clothing and accessory dyes (such as those used on denim jeans) may migrate to lighter colors. This phenomenon is increased by humidity and temperature and is irreversible.

Formula 409® is a registered trademark of the Clorox Company®. Fantastik® is a trademark of DowBrands, Inc.® Trademark of the Dow Chemical Co.®

Please check compatibility when using this product in combination with painted or varnished surfaces.

**SilverWeave**

PERMABLOCK® Cleaning – Get rid of stains with one of the following steps:

Step 1 (eye shadow, mascara, grease, black felt tip pen, crayon, chocolate, suntan lotion): Remove excess spill with a damp cloth. Clean with a 1:1 mix of Ivory® liquid soap and water. Next, rinse with clean water and dry.

Step 2 (red lipstick): Use a straight application of concentrated cleaners such as Formula 409® or Fantastik® spray cleaner. Wipe with a clean cloth, rinse with clean water, and dry.

Step 3 (blood, urine, feces, oil base paint, tar, asphalt): Use a 1:1 mix of ammonia and water, or a 1:4 mix of bleach and water. Rinse with clean water and dry.

Steps 4 & 5 (all other tough stains): Step 4: Use a straight application of naphtha (lighter fluid). Rinse thoroughly with clean water and pat surface dry. Step 5: Use a 1:1 mix of isopropyl alcohol and water. If the stain persists, use straight alcohol. Rinse thoroughly with clean water and pat dry.

Note: For cleaning that requires step 4 or 5, use a soft cotton cloth saturated with the cleaning material and rub the stain in circles 10 times. Pat dry with another soft cotton cloth and check the results.

Please refer to the Mayer Fabrics website or contact customer service for approval of unlisted cleaning agents prior to use.

The information published in this care guide refers to the performance of PERMABLOCK® products in specific tests conducted under laboratory conditions. Results may vary under actual conditions.

This information is not a guarantee and does not relieve the user from the responsibility of the proper and safe use of the product and all cleaning agents. The use of certain agents can be harmful to the surface appearance and lifespan of vinyl.

Mayer Fabrics, its agents, and assigns assume no responsibility resulting from the use of such cleaning agents to the vinyl.

Please check compatibility when using this product in combination with painted or varnished surfaces.

Formula 409® is a registered trademark of the Clorox Company®.

Fantastik® is a trademark of DowBrands, Inc.® Trademark of the Dow Chemical Co.®

Ivory® is a trademark of Procter and Gamble®

Mayer Fabrics is not sponsored by, affiliated with, or endorsed by such trademark owners. Additionally, any use by Mayer Fabrics of any third-party trademark does not constitute any endorsement by Mayer Fabrics of such third party.

**For additional care and cleaning information by pattern, please refer to the Mayer Fabrics website.**



green



**Big Top was inspired by B. Jane Barea, ASID, in support of The Common Thread for the Cure Foundation. Mayer Fabrics will donate 2% of all sales to The Common Thread for the Cure.**

# TECHNICAL INFORMATION

## Crypton Senior Living Portfolio Coordinates

Pattern 54"	Content and Backing	Certifications	Weight/ Linear Yd.	Pattern Repeat	Finish	Abrasion Wyzenbeek	Light- Fastness	Flammability	Cleaning Code
<b>BIG TOP</b> <i>Directional</i> <i>Railroaded</i>	6% Recycled Polyester (4% Pre-/2% Post- Consumer), 94% Polyester Backing: Crypton®	GREENGUARD Gold	15.84 oz.	2.5" H, 4" V	Crypton® with Antimicrobial Silver Ion Technology	85,000 Double Rubs	40 hours	Cal. 117-2013 NFPA 260/UFAC Class 1	C, BC
<b>CATWALK</b> <i>Directional</i>	81% Vinyl face, 19% Polyester backing	GREENGUARD	30 oz.	18" H, 18" V	PBG+	100,000 Double Rubs	1000 hours	Cal. 117-2013 NFPA 260/UFAC Class 1 Boston Fire Dept. Code FAA/FAR 25.853(a) & Appd. F Part I(a)(ii) FMVSS 302 IMO FTP 2010 Part 8, 3.1,3.2 NY&NJ Port Authority Fed. Test Method Stnd. No. 191A, Method 5903.1	PBG+ cleaning, BC
<b>CIRQUE</b> <i>Directional</i>	81% Vinyl face, 19% Polyester backing	GREENGUARD	30 oz.	18" H, 18" V	PBG+	100,000 Double Rubs	1000 hours	Cal. 117-2013 NFPA 260/UFAC Class 1 Boston Fire Dept. Code FAA/FAR 25.853(a) & Appd. F Part I(a)(ii) FMVSS 302 IMO FTP 2010 Part 8, 3.1,3.2 NY&NJ Port Authority Fed. Test Method Stnd. No. 191A, Method 5903.1	PBG+ cleaning, BC
<b>COSMOPOLITAN</b> <i>Directional</i>	88% Polyester, 12% Nylon Backing: Crypton®	GREENGUARD Gold	19.28 oz.	None	Crypton® with Antimicrobial Silver Ion Technology	100,000 Double Rubs	40 hours	Cal. 117-2013 NFPA 260/UFAC Class 1	C, BC
<b>LAVISH</b> <i>Directional</i>	100% Polyester Backing: Crypton®	GREENGUARD Gold	22.98 oz.	None	Crypton® with Antimicrobial Silver Ion Technology	79,000 Double Rubs	40 hours	Cal. 117-2013 NFPA 260/UFAC Class 1	C, BC
<b>SILVERWEAVE</b> <i>Directional</i>	70% Vinyl face, 30% Polyester backing	GREENGUARD	30 oz.	None	PERMABLOK®	930,000^ Double Rubs	1000 hours	Cal. 117-2013 NFPA 260/UFAC Class 1 Boston Fire Dept. Code FAA/FAR 25.853(a) & Appd. F Part I(a)(ii) FMVSS 302 IMO FTP 2010 Part 8, 3.1,3.2 NFPA 701 (small scale) NY&NJ Port Authority Fed. Test Method Stnd. No. 191A, Method 5903.1	PERMABLOK® cleaning, BC
<b>SOCIAL NETWORK</b> <i>Directional</i>	100% Polyester Backing: Crypton®	GREENGUARD Gold	15.29 oz.	3.5" H, 6" V	Crypton® with Antimicrobial Silver Ion Technology	70,000 Double Rubs	40 hours	Cal. 117-2013 NFPA 260/UFAC Class 1	C, BC
<b>WHIMSY</b> <i>Directional</i>	60% Post-Consumer Recycled Polyester, 40% Polyester Backing: Crypton Green	GREENGUARD Gold	17.79 oz.	13.5" H, 13.5" V	Crypton® Green with Antimicrobial Silver Ion Technology	50,000 Double Rubs	40 hours	Cal. 117-2013 NFPA 260/UFAC Class 1	C, BC

All patterns may comply with California Technical Bulletin 133 when combined with appropriate components.

### ADDITIONAL INFORMATION

**^Abrasion:** Multiple factors affect fabric durability and appearance retention, including end-user application and proper maintenance. Wyzenbeek results above 100,000 double rubs have not been shown to be a reliable indicator of increased fabric lifespan.

**Custom Capabilities:** All patterns can be custom colored. Minimum yardage applies.

**Digital Swatch Card Color Matching:** Due to color variations on different monitors and color printers, actual swatch colors may vary slightly. Please request a memo sample from Mayer Fabrics to ensure proper color representation.

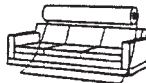
**Specifications:** Specifications are correct at the time of printing. Additional specifications are available on our website.

**For information or assistance with products or services, call us at 800.428.4415 or refer to the Mayer Fabrics website.**

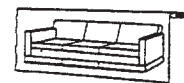


These fabrics meet or exceed these ACT performance guidelines.  
\*Certification Marks owned by ACT®

Railroaded: This feature allows reduction of seams and enables smoother furniture tailoring.



Fabric "up the roll" or "regular" position



Fabric "railroaded" or "top selvage" position

We recommend all railroaded patterns should be upholstered as shown on card.



**OPEN ROAD**  
FURNISHINGS



A division of Stance Healthcare  
design@openroadfurnishings.com  
www.openroadfurnishings.com  
T 844.365.2500 F 877.395.6270

T 317.267.2626 or 800.428.4415 F 317.267.2629 or 877.7SAMPLE  
www.mayerfabrics.com  
©2017 Mayer-Paetz, Inc.

SHCSLPCD  
50117