

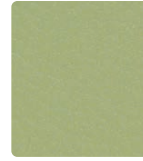
FLORENTINO



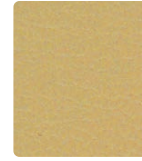
FT-026 Dove



FT-012
Dijon



FT-033
Willow



FT-027
Khaki



FT-017
Biscuit



FT-029
Mango



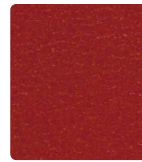
FT-043
Basil



FT-010
Latte



FT-020
Bark



FT-001
Scarlet



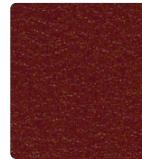
FT-044
Turquoise



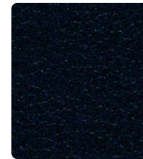
FT-000
Sable



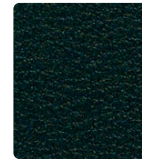
FT-016
Slate



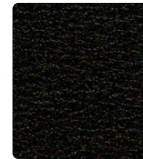
FT-009
Chili



FT-004
Sapphire

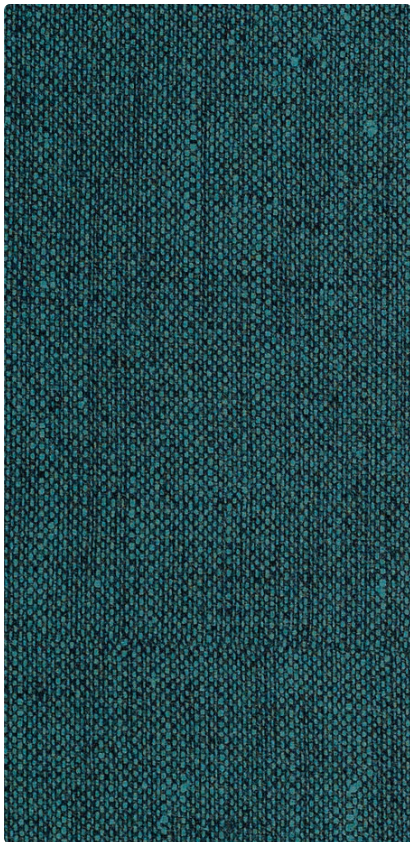


FT-014
Marine

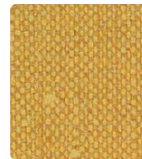


FT-006
Jet

KEY LARGO



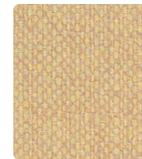
KL-014 Aegean



KL-012
Wheat



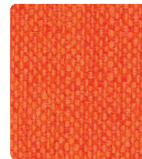
KL-033
Pear



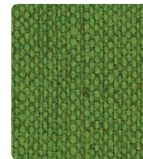
KL-027
Sand



KL-007
Parchment



KL-009
Tangerine



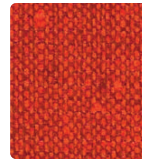
KL-013
Palm



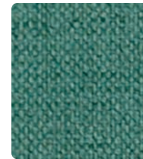
KL-010
Toast



KL-026
Quarry



KL-019
Cayenne



KL-024
Nassau



KL-020
Sandstone



KL-006
Graphite



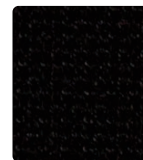
KL-015
Crocus



KL-004
Ultramarine



KL-000
Chocolate



KL-016
Ebony

TECHNICAL INFORMATION

Healthcare Coordinates

Pattern 54"	Content and Backing	Certifications	Weight/ Linear Yd	Pattern Repeat	Finish	Abrasion (Wyzenbeek)	Light- Fastness	Flammability	Cleaning Code
FLORENTINO	86% Vinyl face, 14% Polyester backing Phthalate (21P) Free	GREENGUARD	28 oz.	None	Resilience ^{SR}	651,000 Double Rubs	650 hours	Cal. 117-2013 NFPA 260/UFAC Class 1 FMVSS 302 IMO FTP 2010 Code MSC. 307(88) Part 8, 3.1 & 3.2	WS, BC
KEY LARGO <i>Directional</i>	86% Vinyl face, 14% Polyester backing Phthalate (21P) Free	GREENGUARD	28 oz.	Non- Matching	Resilience ^{SR}	250,000 Double Rubs	650 hours	Cal. 117-2013 NFPA 260/UFAC Class 1 FMVSS 302 IMO FTP 2010 Code MSC. 307(88) Part 8, 3.1 & 3.2	WS, BC

May comply with California Technical Bulletin 133 when combined with appropriate components.

REDUCED ENVIRONMENTAL IMPACT

These products are GREENGUARD Certified for low chemical and particle emissions to UL standard UL 2818 and may contribute to LEED certification. For complete information visit mayerfabrics.com and UL.com/gg.

Phthalates listed on Prop 65 were not used in production.

21P Free - 21 Phthalates were not used in production (BBP, DCHP, DNPP, DPP, DEP, DNHP, DIBP, DINP, DIDP, DNNP, DIOP, DEHP, DBP, DMP, DNOP, DBZP, DMEP, DIPP, DPP, DIHP, DHNUP)

Lead/Heavy Metal Free Tris Free Does not contain conflict minerals

Phthalate and Lead Free to meet CPSC/CPSIA (children's products) environmental and health standards.

CLEANING INFORMATION

WS: Water/Solvent Cleaner

BC: Bleach Cleanable – 1 part bleach, 9 parts water = 10% bleach, 90% water solution. Do not clean/disinfect fabric for longer than 10 minutes using the 10% bleach solution. Always rinse promptly with clean water after applying the bleach solution. Failure to do so will void any and all warranties.

Recommended Care and Cleaning Steps

Prompt cleaning is always recommended. Please follow the cleaning guide by type of stain.

Regular Cleaning and Maintenance (Dirt, Dust, Grime): Clean the soiled area with mild soap and water, then rinse with fresh water and wipe dry with a clean cloth.

Food Stains/Oils (Ketchup, Chocolate, Coffee, Tea, Juice): Wipe affected area with a soft cloth or soft bristle brush using a non-abrasive cleaner, for example Formula 409™ or Fantastik™. Rinse with fresh water and wipe dry.

Healthcare (Blood, Urine, Betadine): Clean/disinfect the soiled area with a 10% solution of household bleach and water. It is important to rinse the cleaned area with fresh water after applying the bleach solution.

Difficult Stains (Eye shadow, Mascara, Lipstick, Crayon): Clean the soiled area with 50% solution of isopropyl alcohol (rubbing alcohol) and water. It is important to rinse the cleaned area with fresh water after applying the alcohol solution.

NOTE: The use of commercial vinyl conditioners and protectants is NOT RECOMMENDED.

The information in this cleaning guide refers to performance of Resilience in specific tests conducted under laboratory conditions. This information does not imply a specific guarantee and does not relieve the user from the responsibility of the proper and safe use of the product and referenced cleaning agents.

ADDITIONAL INFORMATION

Custom Capabilities: All patterns can be custom colored. Minimum yardage applies.

Specifications: Specifications are correct at the time of printing. Current specifications are available on the Mayer Fabrics website.

For information or assistance with products or services, call Mayer Fabrics at 800.428.4415 or refer to the Mayer Fabrics website.



These fabrics meet or exceed these ACT performance guidelines.
Certification Marks owned by ACT

COMPEL[®]
OFFICE FURNITURE

7540 Roosevelt Road, Forest Park, IL 60130
† 773.253.4758
www.compel-furniture.com



MAYERFABRICS

† 317.267.2626 or 800.428.4415 f 317.267.2629 or 877.7SAMPLE
www.mayerfabrics.com
©2016 Mayer-Paetz, Inc.

50616
COMHCVCD