

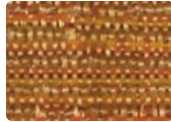


om | smart seating

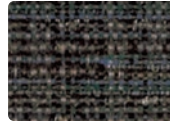




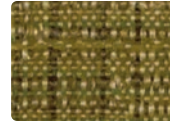
DEBONAIR
WC703-017 Hemp



WC703-009
Mango



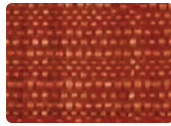
WC703-004
Azure



WC703-003
Aloe



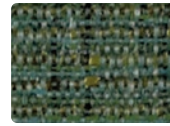
WC703-020
Bronze



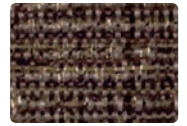
WC703-001
Flame



WC703-005
Plum



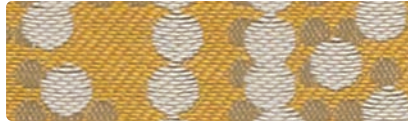
WC703-014
Eucalyptus



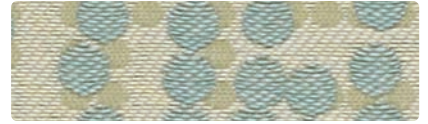
WC703-000
Sable



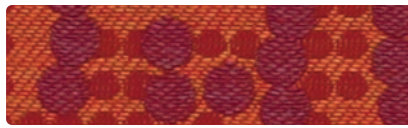
CIRCUIT
390-007 Taupe



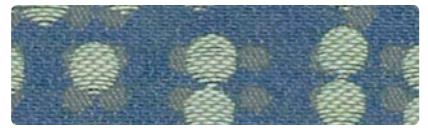
390-002
Butterscotch



390-024
Spa



390-009
Bittersweet



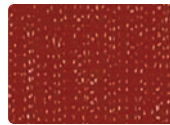
390-014
Aquamarine



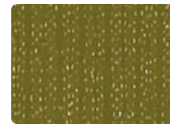
CASCADE
CE-007 Ecrú



CE-002
Saffron



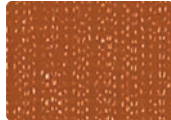
CE-001
Scarlet



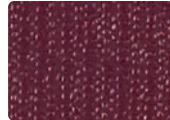
CE-003
Jade



CE-010
Umber



CE-009
Tangerine



CE-005
Magenta



CE-004
Atlantic



CE-016
Seal



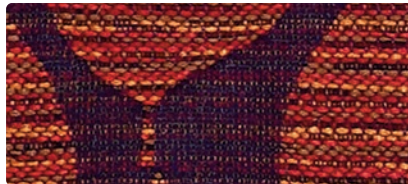
BATIK
396-007 Sandalwood



396-009
Amber



396-003
Limeade



396-008
Ablaze



396-006
Blue Clay

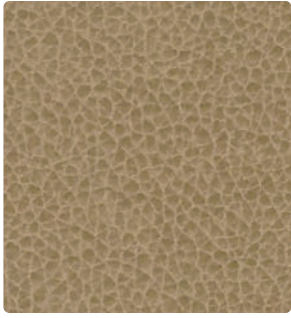


396-004
Seaworthy



396-000
Ember

Additional colors are available. Please refer to the Mayer Fabrics website.



PALERMO
PL-027 Buff



PL-009
Mango



PL-014
Aqua



PL-002
Butter



PL-007
Ecrú



PL-001
Ruby



PL-004
Sapphire



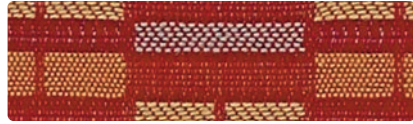
PL-003
Parsley



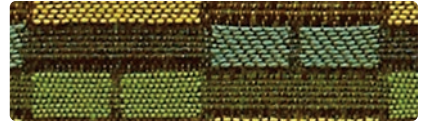
PL-000
Java



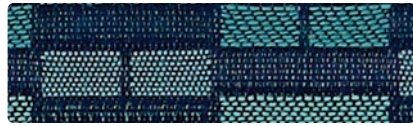
PATIO
420-002 Sunshine



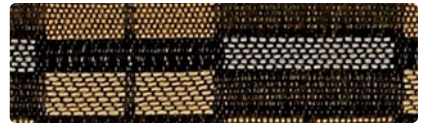
420-001
Sangria



420-003
Jungle



420-004
Oceanic



420-000
Basket

*Interlochen grade-in's shown on this card. For stock options, visit omsmartseating.com



INTERLOCHEN*
IN-017 Quartz



IN-013
Hemlock



IN-020
Bronze



IN-027
Glacier



IN-002
White Gold



IN-005
Wildberry



IN-010
Umber



IN-016
Pumice



IN-000
Truffle



WILDFLOWER
392-007 Parchment



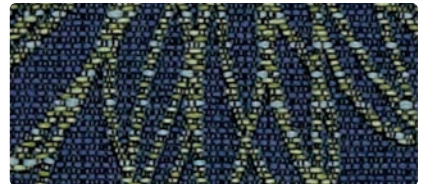
392-002
Butterscotch



392-003
Aloe



392-009
Bittersweet



392-004
Cerulean



392-005
Grape



392-000
Java

Additional colors are available. Please refer to the Mayer Fabrics website.



Pattern 54"	Content and Backing	Certifications	Weight/ Linear Yd.	Pattern Repeat	Finish	Abrasion Wyzenbeek	Breaking Strength	Crocking	Light-Fastness	Flammability	Cleaning Code	Grade
Batik <i>Directional</i>	51% Recycled Polyester (35% Post-/16% Pre-Consumer), 49% Polyester Backing: Acrylic	GREENGUARD Gold	8.464 oz.	2.5" H, 5" V	Stain Repellent	51,000 Double Rubs	Warp 130 lbs. Fill 187 lbs.	Dry: 4 min Wet: 3 min	40 hours	Cal 117-2013 NFPA 260/UFAC Class 1	WS, BC	B
Cascade <i>Directional</i>	100% Polyurethane – PVC FREE Backing: 100% Polyester Knit	GREENGUARD	20 oz.	Non-Matching	Writer's Block	150,000 ^A Double Rubs	Warp 144 lbs. Fill 113 lbs.	Dry: 4 min Wet: 4 min	200 hours	Cal 117-2013 NFPA 260/UFAC Class 1 or A ASTM E84 Class 1 or A FMVSS 302 IMO A.652(16) 8.2/IMO FTP 2010 Part 8, 3.1	WS, BC, Writer's Block cleaning, Refer to Mayer website for additional information	D
Circuit <i>Directional</i>	100% Repreve Solution Dyed Pre-Consumer Recycled Nylon Backing: Nylon	GREENGUARD Gold, Facts Gold	10.384 oz.	14.375" H, 18.461" V Random Match	Stain Repellent	230,000 ^A Double Rubs	Warp 187 lbs. Fill 239 lbs.	Dry: 4 min Wet: 3 min	240 hours	Cal 117-2013 NFPA 260/UFAC Class 1	WS, BC	E+15
Debonair <i>Directional</i>	100% Polyester Backing: Crypton	GREENGUARD Gold	18.21 oz.	13.5" H, 16.25" V Non-Matching	Crypton with Antimicrobial Silver Ion Technology	105,000 ^A Double Rubs	Warp 416 lbs. Fill 488 lbs.	Dry: 4 min Wet: 4	40 hours	Cal 117-2013 NFPA 260/UFAC Class 1	C, BC	E
Interlochen <i>Directional</i>	100% Vinyl Backing: 100% Polyester	GREENGUARD	30 oz.	0.625" H, 0.625" V	SILVERGUARD with Antibacterial Silver Ion Technology and PERMABLOK	1,155,000 ^A Double Rubs	Warp 121 lbs. Fill 72 lbs.	Dry: 4 min Wet: 4 min	1000 hours	Cal 117-2013 NFPA 260/UFAC Class 1 Boston Fire Code (BFD IX-1) FAA/FAR 28.853(a) FMVSS 302 IMO A.652(16) 8.2 & 8.3/IMO FTP 2010 Part 8, 3.1 & 3.2 NY & NJ Port Authority	PERMABLOK cleaning, BC, Refer to Mayer website for additional information	C
Palermo	100% Polyurethane – PVC FREE Backing: 100% Polyester Knit	GREENGUARD	20 oz.	Non-Matching	Writer's Block	250,000 ^A Double Rubs	Warp 144 lbs. Fill 113 lbs.	Dry: 4 min Wet: 4 min	200 hours	Cal 117-2013 NFPA 260/UFAC Class 1 ASTM E84 Class 1 or A FMVSS 302 IMO A.652(16) 8.2/IMO FTP 2010 Part 8, 3.1	WS, BC, Writer's Block cleaning, Refer to Mayer website for additional information	E
Patio <i>Directional</i>	100% Polyester Backing: Acrylic	GREENGUARD Gold	11.68 oz.	1.875" H, 1.25" V	Stain Repellent	54,000 Double Rubs	Warp 156 lbs. Fill 172 lbs.	Dry: 4 min Wet: 3 min	40 hours	Cal 117-2013 NFPA 260/UFAC Class 1	WS, BC	B
Wildflower <i>Directional</i>	100% Solution Dyed Recycled Nylon (90% Repreve Pre-/7% Pre-/3% Post-Consumer) Backing: Nylon	GREENGUARD Gold, Facts Silver	13.792 oz.	14.375" H, 19" V	Stain Repellent	165,000 ^A Double Rubs	Warp 213 lbs. Fill 342 lbs.	Dry: 4 min Wet: 3	240 hours	Cal 117-2013 NFPA 260/UFAC Class 1	WS, BC	E+30

CLEANING INFORMATION

WS – Water/Solvent Cleaner: Spot clean with a mild solvent, an upholstery shampoo, or the foam from a mild detergent. When using a solvent or dry cleaning product, follow instructions carefully and clean only in a well-ventilated room. Avoid any product that contains carbon tetrachloride or other toxic materials. With either method, pretest a small area before proceeding. Always rinse promptly with clean water.

C – Crypton Cleaning: Crypton fabrics are available in various fiber types, and all Crypton fabrics can be cleaned with soap and water. For the best cleaning solution, use CRYPTON UPHOLSTERY CLEANER, available from Mayer Fabrics.

BC – Bleach Cleanable: 1 part bleach, 9 parts water = 10% bleach, 90% water solution. Do not clean/disinfect fabric for longer than 10 minutes using the 10% bleach solution. Always rinse promptly with clean water after applying the bleach solution. Failure to do so will void any and all warranties.

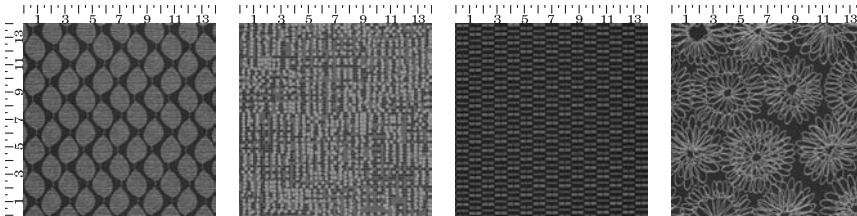
Please refer to Mayerfabrics.com and/or omsmartseating.com website for PERMABLOK® Cleaning, WRITE AWAY™ Cleaning and an updated list of approved cleaners.

ADDITIONAL INFORMATION

Cal TB 133: All patterns may comply with California Technical Bulletin 133 when combined with appropriate components.

^AAbrasion: Multiple factors affect fabric durability and appearance retention, including end-user application and proper maintenance. Wyzenbeek results above 100,000 double rubs have not been shown to be a reliable indicator of increased fabric lifespan.

Specifications: Specifications are correct at the time of printing. Current detailed specifications are available on the Mayer Fabrics website.



Batik 2.5" H, 5" V | Circuit 14.375" H, 18.461" V Random Match | Patio 1.875" H, 1.25" V | Wildflower 14.375" H, 19" V



These fabrics meet or exceed these ACT performance guidelines. *Certification Marks owned by ACT®



www.mayerfabrics.com
ph 317.267.2626 | 800.428.4415
fax 317.267.2629 | 877.7SAMPLE
©2016 Mayer-Paetz, Inc.

OMPHC2CD 50116