

# LUXE CRYPTON PLUS COORDINATES

---

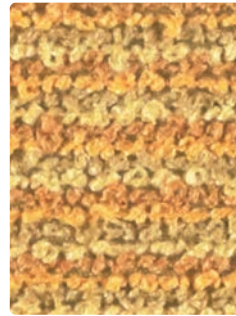
Featuring Silver Ion Technology



# Featuring Silver Ion Technology



**OBSESSION**  
WC752-009 Orange Crush



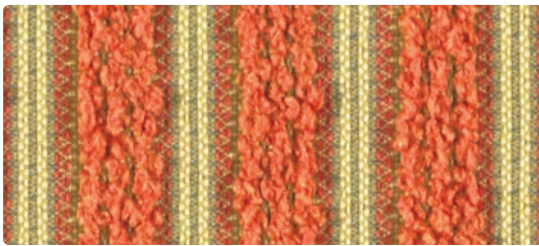
**DEBUT**  
WC747-002 Sunshine



**PAPARAZZI**  
WC774-001 Carmine



**ENTOURAGE**  
WC775-001 Lipstick



**ENTOURAGE**  
WC775-009 Tangerine



**MALIBU**  
WC718-009 Cinnabar



**MALIBU**  
WC718-011 Poppy



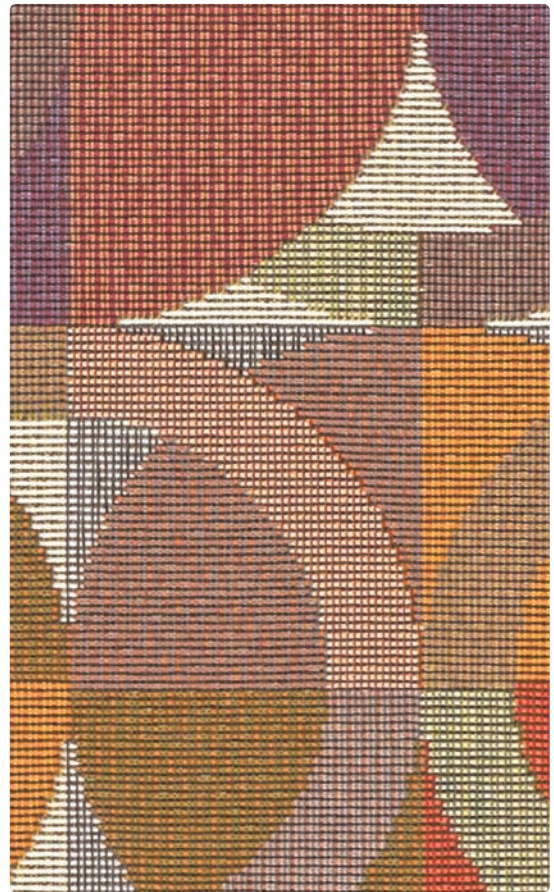
**MALIBU**  
WC718-005 Lavender



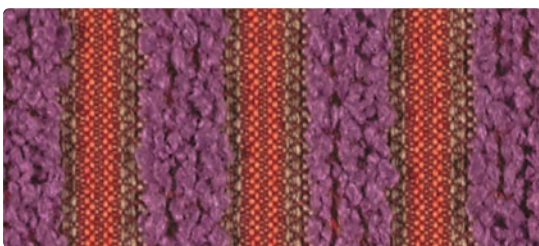
**DEBUT**  
WC747-011 Bubble Gum



**PAPARAZZI**  
WC774-015 Sherbert



**XANADU**  
WC712-009 Orchard



**ENTOURAGE**  
WC775-005 Purple Zest



**COUNTERPOINT**  
CP-009 Tangerine

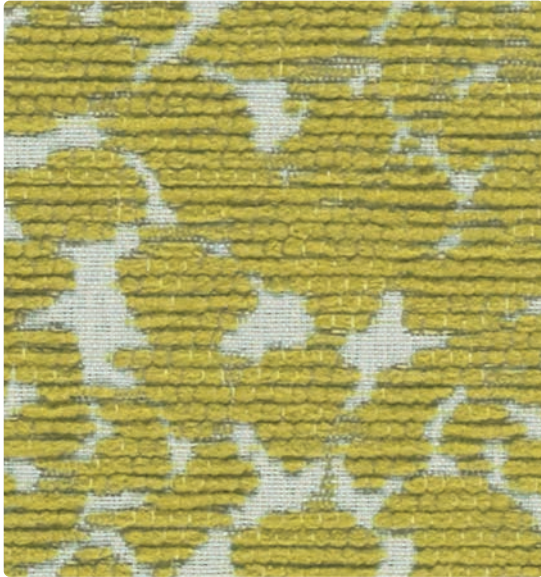


**COUNTERPOINT**  
CP-001 Scarlet

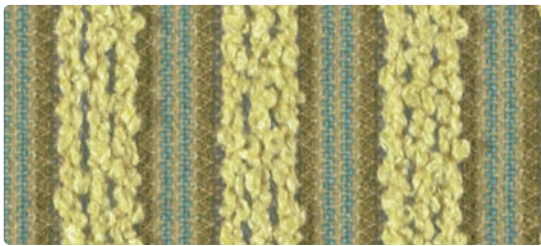


**COUNTERPOINT**  
CP-008 Sangria





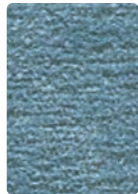
**OBSESSION**  
WC752-003 Jadestone



**ENTOURAGE**  
WC775-003 Key Lime



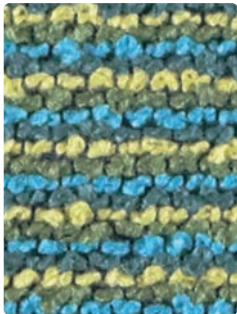
**MALIBU**  
WC718-003 Fern



**MALIBU**  
WC718-014 Cyan



**MALIBU**  
WC718-004 Denim



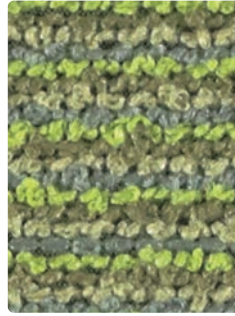
**DEBUT**  
WC747-014 Brilliant Blue



**PAPARAZZI**  
WC774-004 Brilliant Blue



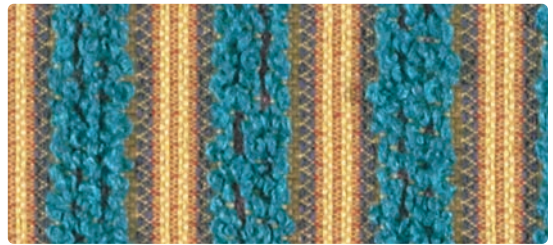
**ENTOURAGE**  
WC775-004 Pacific



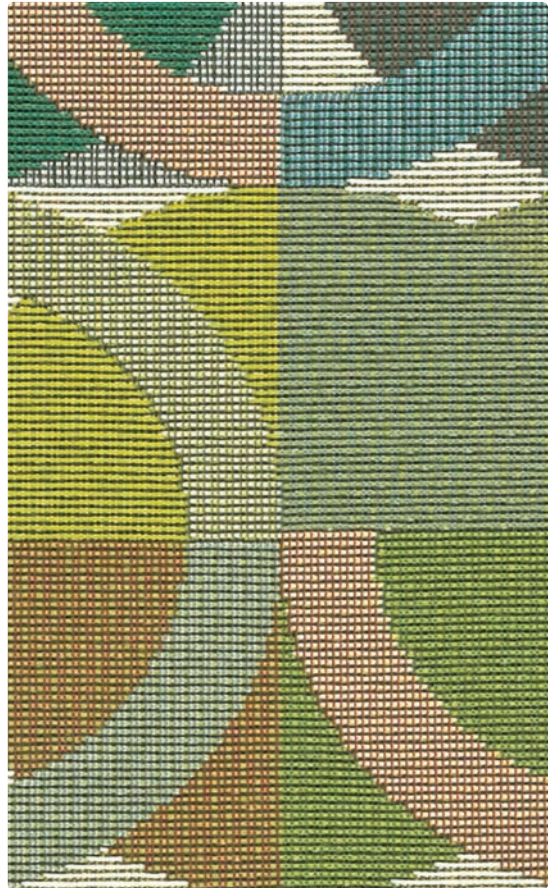
**DEBUT**  
WC747-003 Peridot



**PAPARAZZI**  
WC774-002 Amber



**ENTOURAGE**  
WC775-014 Blue Topaz



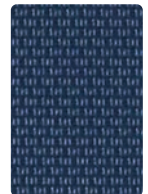
**XANADU**  
WC712-003 Emerald



**COUNTERPOINT**  
CP-013 Chartreuse



**COUNTERPOINT**  
CP-014 Capri



**COUNTERPOINT**  
CP-004 Royal





**OBSESSION**  
WC752-007 Champagne



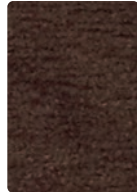
**ENTOURAGE**  
WC775-000 Bark



**MALIBU**  
WC718-007 Parchment



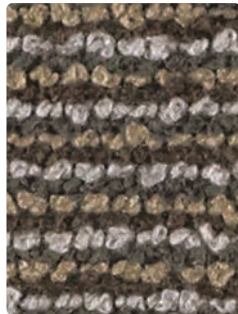
**MALIBU**  
WC718-010 Mushroom



**MALIBU**  
WC718-000 Sable



**PAPARAZZI**  
WC774-000 Soapstone



**DEBUT**  
WC747-000 Cinder



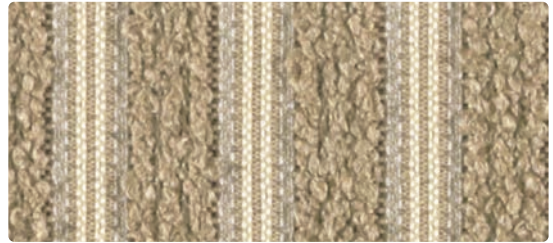
**ENTOURAGE**  
WC775-006 Pewter



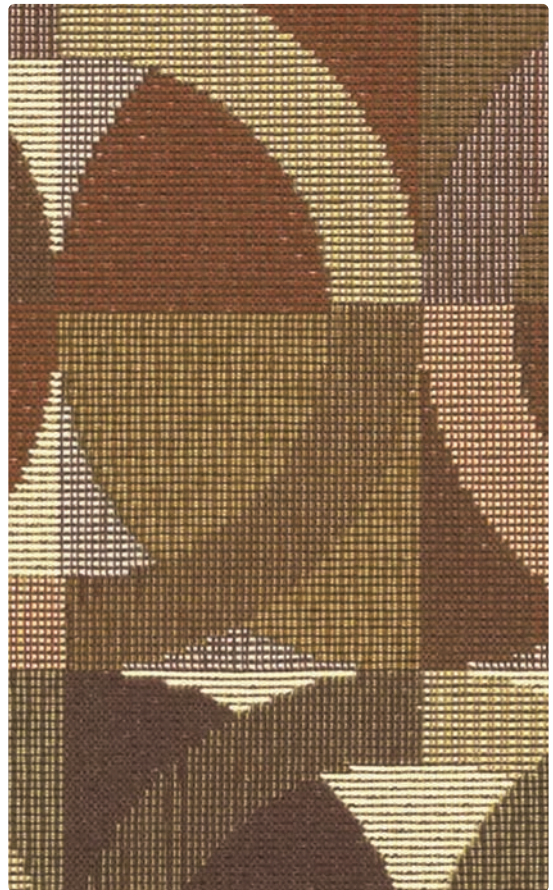
**PAPARAZZI**  
WC774-007 French Beige



**DEBUT**  
WC747-007 Pearl Bisque



**ENTOURAGE**  
WC775-007 Cliff



**XANADU**  
WC712-000 Canyon



**COUNTERPOINT**  
CP-007 Mica

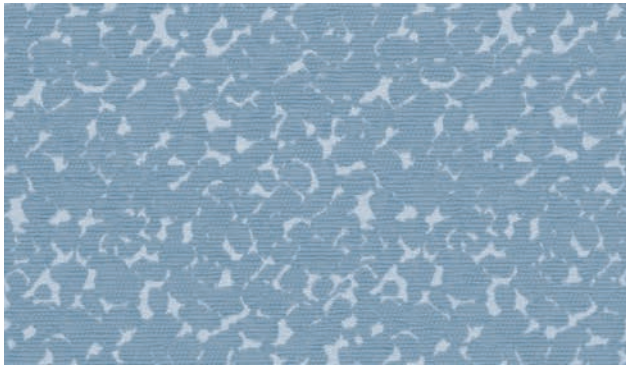


**COUNTERPOINT**  
CP-010 Umber

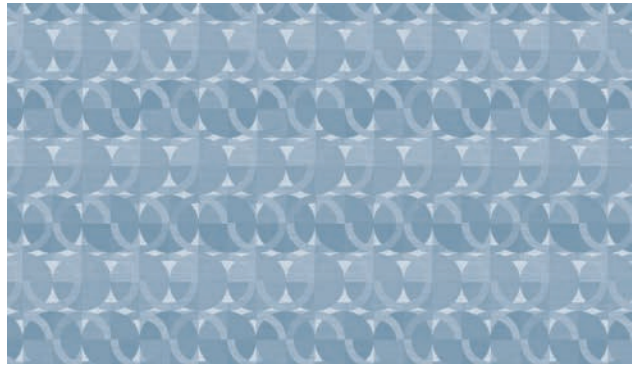


**COUNTERPOINT**  
CP-006 Graphite





OBSESSION - Repeat: 7.25" H, 13.5" V, Random Match



XANADU - Repeat: 7.5" H, 14.875" V

**CRYPTON STAIN RESISTANCE - Debut, Entourage, Malibu, Obsession, Paparazzi, Xanadu**

Stain Resistance is based on a numerical scale with 5 being the highest for stain removal.

	After 5 min./After 24 hrs.		After 5 min./After 24 hrs.
Blood	Class 4-5/Class 4-5	Urine	Class 4-5/Class 4-5
Iodine	Class 4-5/Class 4-5	Suntan Lotion	Class 4-5/Class 4-5
Ketchup	Class 4-5/Class 4-5	Black Coffee	Class 4-5/Class 4-5
Milk	Class 4-5/Class 4-5	Cola	Class 4-5/Class 4-5

**CRYPTON BACTERIAL AND FUNGUS/MILDEW RESISTANCE - Debut, Entourage, Malibu, Obsession, Paparazzi, Xanadu**

Non leaching Silver Ion Technology microbial protection.

Excellent anti-bacterial and anti-fungal properties as evidenced by the following methods: 4 and 5 millimeter-wide growth-free zones produced against the staphylococcus aureus test organism.

Crypton resists fungal growth, test AATCC 30-2004, Aspergillus niger (ATCC #6275).

Crypton resists bacterial growth, test ISO 20743:2007(E), Klebsiella pneumoniae (ATCC #4352)

EPA Approved – When Crypton’s Disinfectant and Deodorizer is used on Crypton Super Fabric, you have a disinfected fabric system. Crypton is the first and only fabric approved by the EPA proven to be disinfected. Crypton’s Disinfectant and Deodorizer will kill MRSA, VRSA, IV, E. Coli, hepatitis and many more bacteria and viruses.

**SPECIFIC TREATMENTS - Counterpoint**

Ag **SILVERGUARD** Counterpoint is treated with the most advanced silver ion technology, **SILVERGUARD**, providing a natural germ-fighting defense to help safeguard the consumer against odor and stain causing bacteria. When combined with **PERMAGUARD**, Spradling’s patented stain-fighting and abrasion-resistant treatment, also featured in Counterpoint, **SILVERGUARD** delivers the ultimate performance solution.

**PERMAGUARD** Superior Stain Resistance Easily Cleaned Scratch Resistant

**SUPERIOR PERFORMANCE - Counterpoint**

Superior Abrasion UV Stability Polycarbonate Resin System

Hydrolytic Stability 7-year Hydrolysis - ASTM D-3690-02, Hydrolytic stability section 6.11 (adhesion, surface abrasion, resistance to flexing)

**CRYPTON CARE AND CLEANING INFORMATION - Debut, Entourage, Malibu, Obsession, Paparazzi, Xanadu**

C: Crypton® Cleaning – Crypton fabrics are available in various fiber types, and all Crypton fabrics can be cleaned with soap and water. The ability to use bleach as a cleaner without damaging the fabric is fiber- and dye-dependent. Cryptons with solution-dyed (acrylic, nylon, olefin) fibers and all polyester Crypton selections can be cleaned safely with bleach; a 10% bleach and 90% water solution is recommended and thorough rinsing is required. For the best cleaning solution, use **CRYPTON UPHOLSTERY CLEANER**, available from Mayer Fabrics.

BC: Bleach Cleanable - 1 part bleach, 9 parts water = 10% bleach, 90% water solution. Always rinse promptly with clean water after applying the bleach solution.

**CLEANING INFORMATION AND SUPERIOR STAIN RESISTANCE - Counterpoint**

Most difficult stains are effortlessly cleaned with a dry cloth, and stubborn soiling may be eliminated with isopropyl alcohol. Not only do stains disappear in seconds, but **PERMAGUARD** provides unequalled resistance to scratches, scuffs, and abrasion.

Step 1: Only a soft dry white cotton cloth is needed when stains are fresh and can be possibly be removed immediately.

Step 2: More stubborn soiling may be eliminated using a mix 75% isopropyl alcohol and 25% clear water applied to the stain area.

Step 3: Rinse thoroughly with clear water.

Step 4: Pat dry with damp white cloth.

Step 5: For cleaning that may require a repeat of step 2, use a soft cloth and rub the stain in circles 10 times. Pat dry with another soft cotton cloth and check result s.

Please refer to the Mayer Fabrics website or contact customer service for approval of unlisted cleaning agents prior to use.

BC: Bleach Cleanable - 1 part bleach, 4 parts water = 20% bleach, 80% water solution. Always rinse promptly with clean water after applying the bleach solution.

Stain	Cleaning Agent <sup>1</sup> Rating <sup>2</sup>
Red Wine	Class 4
Coffee/Tea/Soda	Class 4
Milk	Class 4
Ketchup/Mustard/Soy Sauce	Class 4
Lipstick/Suntan Oil or Lotion	Class 4
Machine Oil/Grease	Class 4
Urine/Blood	Class 4

<sup>1</sup>Cleaning Agents - Any of the following solutions may be used:




Alcohol, water, and bleach (5:5:2)      Bleach and water (1:5)      Alcohol and water (1:1)

<sup>2</sup>Rating System - No staining marks on the surface (4), Slight stain on the surface (3), Strong stain on the surface (2), No cleanability at all (1)

# TECHNICAL INFORMATION

## Luxe Crypton Plus Coordinates

\*Certification Marks Owned by Act.

Pattern 54"	Content and Backing	GREENGUARD Certified	Weight/ Linear Yd	Pattern Repeat	Finish	Abrasion  Wyzenbeek	Light  Fastness	Flammability 	Cleaning Code
COUNTERPOINT <i>Directional</i>	100% Polyurethane - PVC FREE Backing: 100% Polyester	Certified	21 oz.	Non-Matching	SILVERGUARD® with Antimicrobial Silver Ion Technology and PERMAGUARD®	400,000 Double Rubs	250 hours	Cal. 117-2013 Cal. 117, Section E NFPA 260 (Equiv. to UFAC) FMVSS 302, IMO A.652(16) 8.2, IMO FTP 2010 Code MSC.307(88), Part 8, 3.1	Refer to cleaning section  BC
DEBUT <i>Directional</i>	100% Recycled Polyester (76% Pre-/24% Post-Consumer) Backing: Crypton® Green	Gold Certified	27 oz.	0" H 0.3125" V	Crypton® Green with Antimicrobial Silver Ion Technology	150,000 Double Rubs	60 hours	Cal. 117-2013 Cal. 117, Section E NFPA 260 (Equiv. to UFAC)	C - BC
ENTOURAGE <i>Directional Railroaded</i>	100% Recycled Polyester (70% Pre-/30% Post-Consumer) Backing: Crypton® Green	Gold Certified	21 oz.	0.875" H 0" V	Crypton® Green with Antimicrobial Silver Ion Technology	180,000 Double Rubs	60 hours	Cal. 117-2013 Cal. 117, Section E NFPA 260 (Equiv. to UFAC)	C - BC
MALIBU <i>Directional</i>	100% Polyester Backing: Crypton®	Gold Certified	13.37 oz.	Non-Matching	Crypton® with Antimicrobial Silver Ion Technology	100,000 Double Rubs	40 hours	Cal. 117-2013 Cal. 117, Section E NFPA 260 (Equiv. to UFAC)	C - BC
OBSESSION <i>Directional</i>	54% Recycled Polyester (29% Post-/25% Pre-Consumer), 46% Polyester Backing: Crypton® Green	Gold Certified	25 oz.	7.25" H 13.5" V Random Match	Crypton® Green with Antimicrobial Silver Ion Technology	100,000 Double Rubs	60 hours	Cal. 117-2013 Cal. 117, Section E NFPA 260 (Equiv. to UFAC)	C - BC
PAPARAZZI <i>Directional</i>	100% Pre-Consumer Recycled Polyester Backing: Crypton® Green	Gold Certified	23.5 oz.	0.5" H 0.625" V	Crypton® Green with Antimicrobial Silver Ion Technology	70,000 Double Rubs	60 hours	Cal. 117-2013 Cal. 117, Section E NFPA 260 (Equiv. to UFAC)	C - BC
XANADU <i>Directional</i>	100% Polyester Backing: Crypton®	Gold Certified	16.272 oz.	7.5" H 14.875" V	Crypton® with Antimicrobial Silver Ion Technology	51,000 Double Rubs	40 hours	Cal. 117-2013 Cal. 117, Section E NFPA 260 (Equiv. to UFAC)	C - BC

All patterns may comply with California Technical Bulletin 133 when combined with appropriate components.

### REDUCED ENVIRONMENTAL IMPACT - Debut, Entourage, Obsession, Paparazzi

#### Recycled Content

GREENGUARD Gold Certified products are tested for low chemical emissions to standard UL 2818. For more information, visit [UL.com/gg](http://UL.com/gg).



All Crypton products are environmentally preferable. Crypton is produced in a world-class manufacturing operation. Crypton is committed to green and has incorporated Crypton's optimized green formulation in all Crypton upholstery, meaning a greener Crypton.

### REDUCED ENVIRONMENTAL IMPACT - Malibu, Xanadu

GREENGUARD Gold Certified products are tested for low chemical emissions to standard UL 2818. For more information, visit [UL.com/gg](http://UL.com/gg).

All Crypton products are environmentally preferable. Crypton is produced in a world-class manufacturing operation. Crypton is committed to green and has incorporated Crypton's optimized green formulation in all Crypton upholstery, meaning a greener Crypton.

### REDUCED ENVIRONMENTAL IMPACT - Counterpoint

No Heavy Metals Formaldehyde Free

GREENGUARD Certified products are tested for low chemical emissions to standard UL 2818. For more information, visit [UL.com/gg](http://UL.com/gg).

### ADDITIONAL INFORMATION

Additional colors are available. Please refer to the Mayer Fabrics website or contact customer service.

**Custom Capabilities:** All patterns can be custom colored. Minimum yardage applies.

**Memo Samples:** Please keep this card intact. Individual memo samples can be ordered on our website or by contacting customer service.

**Fabric Color Matching:** Mayer Fabrics always attempts to ship a satisfactory commercial match. Because of industry standard dye lot variation, colors may not match exactly.

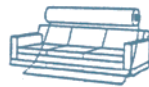
**Digital Swatch Card Color Matching:** Due to color variations on different monitors and color printers, actual swatch colors may vary slightly. Please request a memo sample from Mayer Fabrics to ensure proper color representation.

**Specifications:** Specifications are correct at the time of printing. Additional specifications are available on our website.

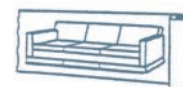
For information or assistance with products or services, call us at 800.428.4415 or refer to our website, [www.mayerfabrics.com](http://www.mayerfabrics.com).



Railroaded: This feature allows reduction of seams and enables smoother furniture tailoring.



Fabric "up the roll" or "regular" position



Fabric "railroaded" or "top selvage" position

We recommend all railroaded patterns should be upholstered as shown on card.



MAYERFABRICS

GSA Contract #GS-28F-0022P