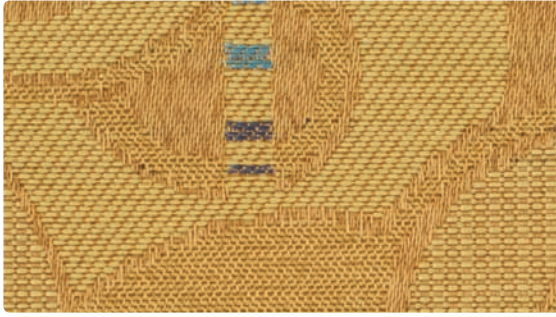


# PROXIMITY CRYPTON PLUS I COORDINATES

---



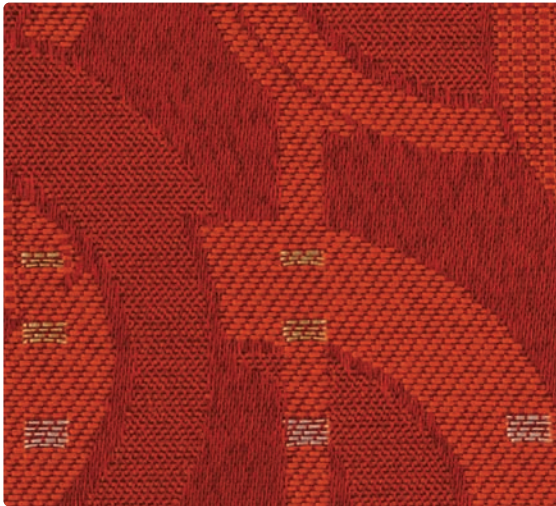
# Featuring Silver Ion Technology



**DISCO**  
WC957-002 Maize



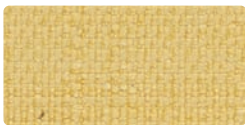
**HABITAT**  
WC958-001 Russet



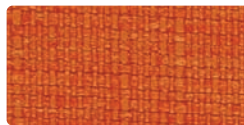
**DISCO**  
WC957-009 Fire



**STANZA**  
WC737-001 Paprika



**ACCLAIM**  
WC751-002 Sunflower



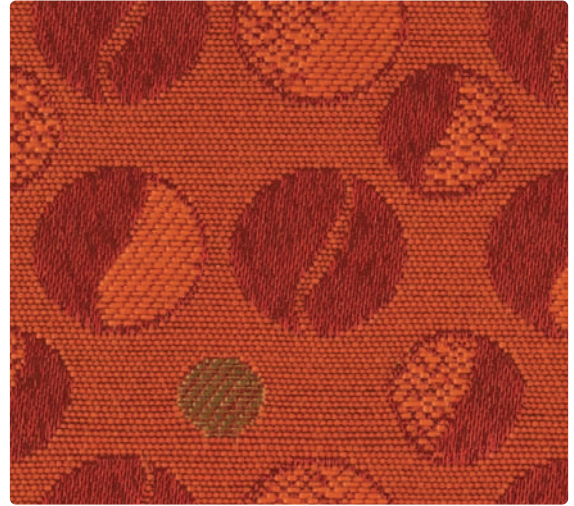
**ACCLAIM**  
WC751-009 Orange Peel



**GUARDIAN**  
GU-002 Chamois



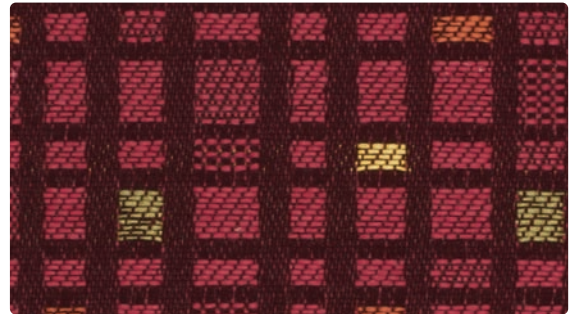
**GUARDIAN**  
GU-011 Paprika



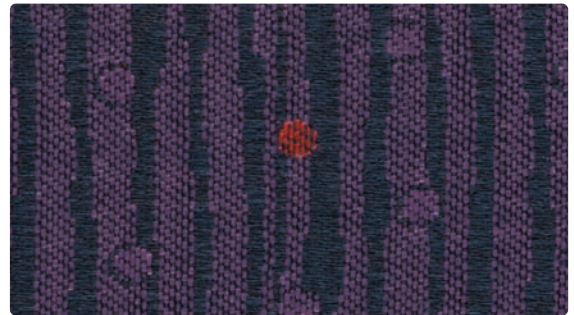
**JITTERBUG**  
WC953-009 Cayenne



**STANZA**  
WC737-002 Mustard



**SOCIAL NETWORK**  
WC960-001 Fuchsia



**RAIN DANCE**  
WC956-005 Aubergine



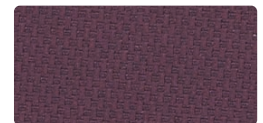
**ACCLAIM**  
WC751-001 Cardinal



**ACCLAIM**  
WC751-005 Purple Haze

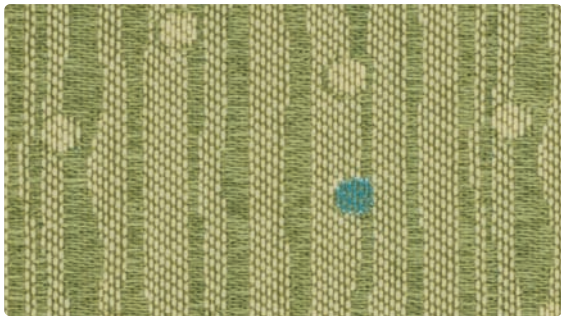


**GUARDIAN**  
GU-001 Scarlet

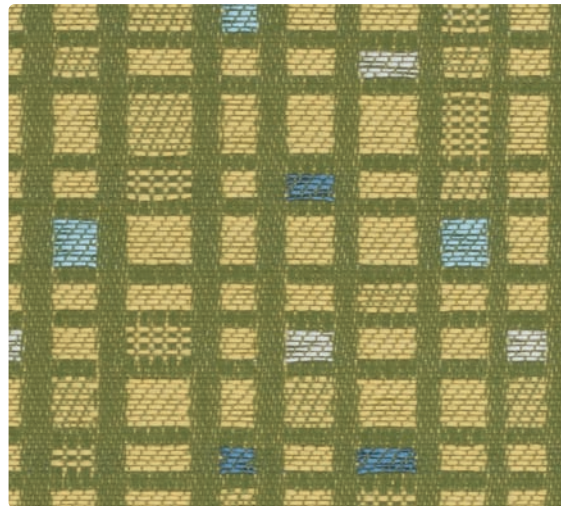


**GUARDIAN**  
GU-005 Purple

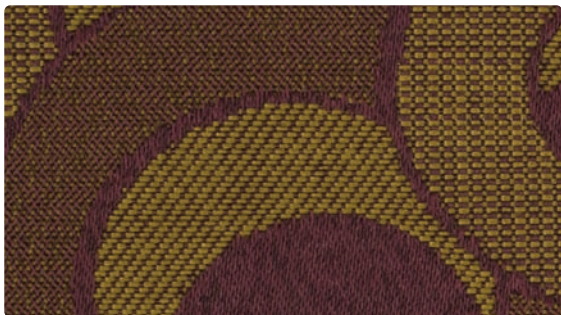




**RAIN DANCE**  
WC956-003 Aloe



**SOCIAL NETWORK**  
WC960-003 Springtime



**DISCO**  
WC957-008 Ripe Olive



**STANZA**  
WC737-003 Ivy



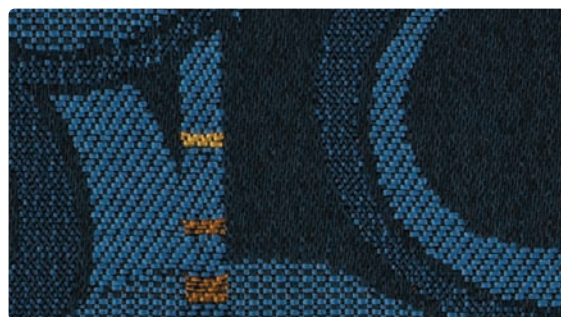
**JITTERBUG**  
WC953-014 Delta



**HABITAT**  
WC958-004 Indigo



**STANZA**  
WC737-004 Atlantic



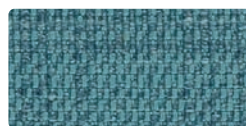
**DISCO**  
WC957-004 Danube



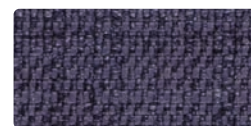
**ACCLAIM**  
WC751-013 Limelight



**ACCLAIM**  
WC751-003 Basil



**ACCLAIM**  
WC751-014 Calypso



**ACCLAIM**  
WC751-004 Indigo



**GUARDIAN**  
GU-013 Willow



**GUARDIAN**  
GU-003 Jade

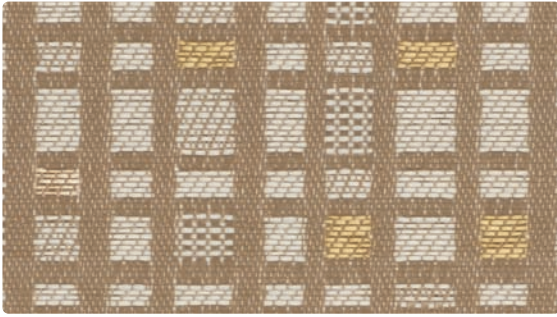


**GUARDIAN**  
GU-034 Spa



**GUARDIAN**  
GU-014 Regatta

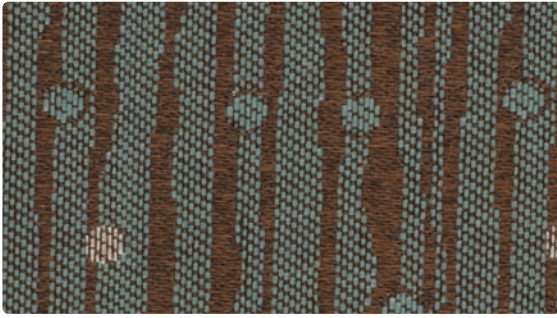




**SOCIAL NETWORK**  
WC960-007 Marble



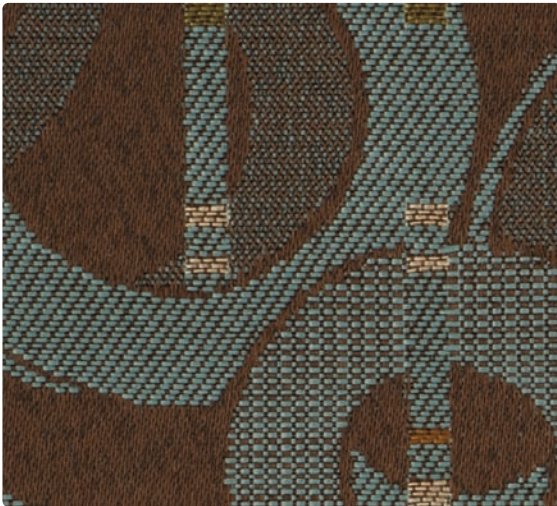
**HABITAT**  
WC958-007 Ecu



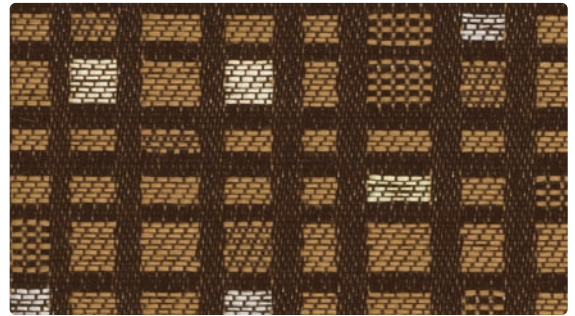
**RAIN DANCE**  
WC956-014 Zenith



**STANZA**  
WC737-000 Toast



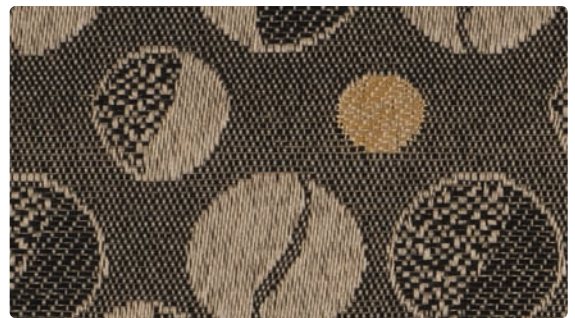
**DISCO**  
WC957-014 Mineral



**SOCIAL NETWORK**  
WC960-000 Latte



**STANZA**  
WC737-014 Azure



**JITTERBUG**  
WC953-006 Driftwood



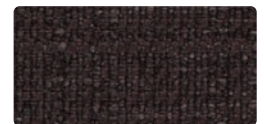
**ACCLAIM**  
WC751-007 Parchment



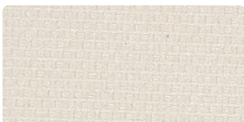
**ACCLAIM**  
WC751-010 Bark



**ACCLAIM**  
WC751-026 Limestone



**ACCLAIM**  
WC751-006 Ebony



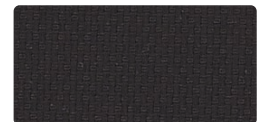
**GUARDIAN**  
GU-017 Parchment



**GUARDIAN**  
GU-000 Umber

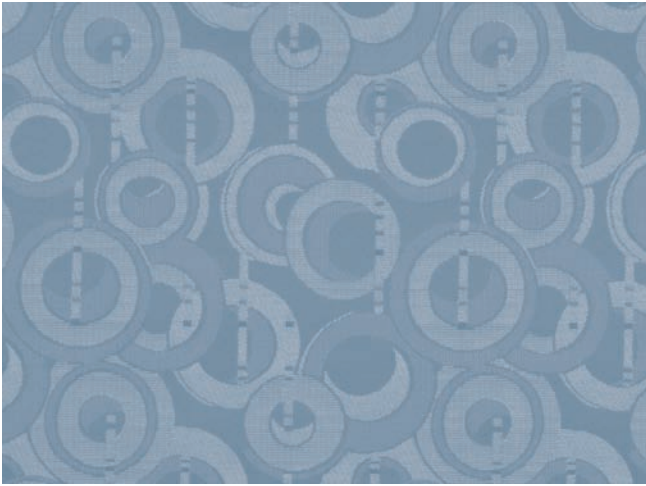


**GUARDIAN**  
GU-010 Greige

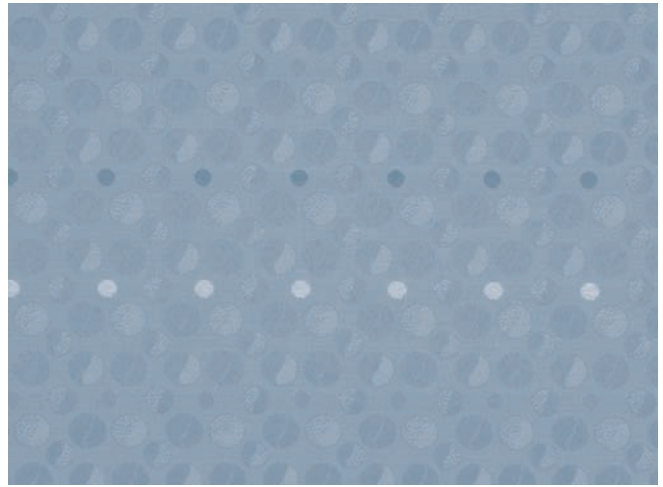


**GUARDIAN**  
GU-006 Ebony

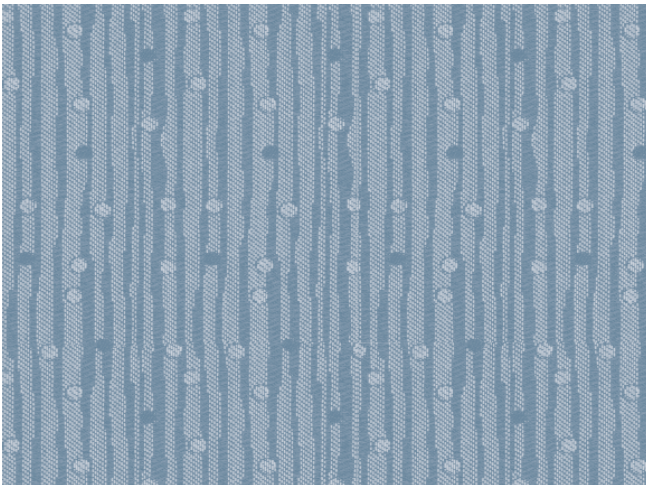




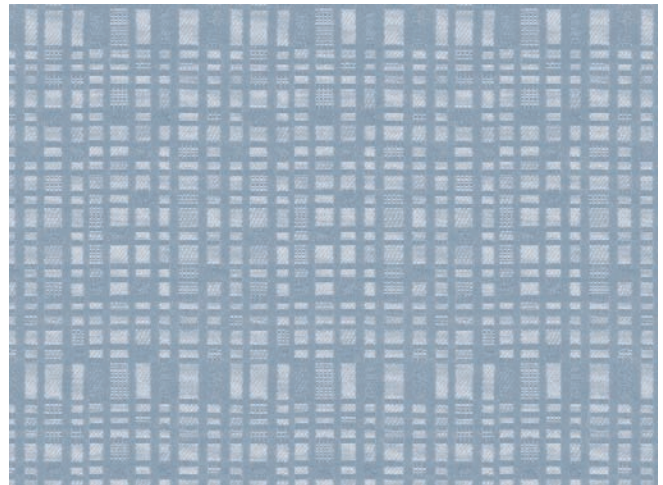
DISCO - Repeat: 9.375" H, 8.75" V



JITTERBUG - Repeat: 2.375" H, 5" V



RAIN DANCE - Repeat: 2.375" H, 4.75" V



SOCIAL NETWORK - Repeat: 3.5" H, 6" V

### GUARDIAN CARE AND CLEANING INFORMATION

**W:** Water-Based Cleaner – Spot clean, using the foam only from a water-based cleaning agent, such as a mild detergent or non-solvent upholstery shampoo product. Apply foam with a soft brush in a circular motion. Vacuum when dry. Pretest small area before proceeding.

In general, most household soil can be easily removed with warm soapy water and several clear water rinses. Moderate scrubbing with a medium bristle brush will help to loosen the soiling agent from the impressions of the surface. For more specific staining, refer to the following guide.

**Soil, Eye Shadow, Crayon, Chocolate, Suntan Lotion:** Warm soapy water and rinse. Use nonabrasive household cleaners or mild household cleaner such as 409®. Rinse with clear water and dry.

**Ball Point Ink:** Immediately wipe with 70% rubbing alcohol. Rinse and dry with clean cloth. Rinse with clear water and dry.

**Tar/Asphalt, Shoe Polish, Grease:** Remove immediately. Dampen cloth with mineral spirits, rub gently from outside edge of stain to center. Rinse with mild soap and water. Rinse with clear water and dry.

**Surface Mildew:** Use nonabrasive household cleaners or mild household cleaners such as 409®. Rinse with clear water and dry. If mildew stain persists, clean with 5:1 bleach and water. Rinse with clear water and dry.

### GUARDIAN SPECIFIC TREATMENTS

Enhanced Bleach Resistance    Mildew, Bacteria and Staph Resistant (Protected by Nanocide® Antimicrobial)    Sulfide Stain Resistant    Urine Stain Resistant

### GUARDIAN BACTERIAL RESISTANCE

Face protected with Nanocide® antimicrobial agent

Passes AATCC Test Method 147-1988

Back protected to conform with ASTM G21

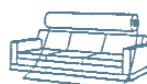
Guardian utilizes Nanocide® technology, a patent-pending process which permanently embeds silver particles from an EPA registered Oeko-Tex approved source into the face of the product during the manufacturing process. Silver is a natural antimicrobial. Microbes and fungi cannot survive in the presence of silver ions. The smaller the silver particles, the more silver ions they emit and the more unwanted microbes are eliminated. Silver enhanced antimicrobial products actively inhibit bacterial growth and show a 99.9% reduction in test microbes and bacteria.\*

When the recommended cleaning and care instructions are properly followed, Nanocide® and its nanoparticles are not washed or worn off. The killing effectiveness does not get diluted or neutralized. It keeps working as it was designed to work for the life of the product. The silver ions that these particles release during normal use are quickly deactivated in wastewater by common substances like chlorine and sulfide to form inert materials.

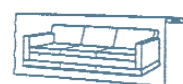
Nanocide® suppresses the growth and proliferation of algae, mold, mildew, fungi, and bacteria which cause unpleasant odors, discoloration, staining, and deterioration.

\*Efficacy data is presented solely to substantiate the antimicrobial activity of silver additives and do not imply a public health claim.

Railroaded: This feature allows reduction of seams and enables smoother furniture tailoring.



Fabric "up the roll" or "regular" position



Fabric "railroaded" or "top selvage" position

All railroaded patterns should be upholstered as shown on card.

# TECHNICAL INFORMATION

## Proximity Crypton Plus I Coordinates

\* ACT® Registered Certification Marks

Pattern 54"	Content and Backing	Weight/ Linear Yd	Pattern Repeat	Finish	Abrasion Wyzenbeek <sup>®</sup>	Light- Fastness	Flammability <sup>®</sup>	Cleaning Code
ACCLAIM <i>Directional</i>	60% Post-Consumer Recycled Polyester, 40% Polyester Crypton® Green	20.45 oz.	Non-Matching	Crypton® Green	305,000 Double Rubs	40 hours	Cal. 117-E NFPA 260 (Equiv. to UFAC)	C
DISCO <i>Directional</i>	100% Polyester Crypton® Backing	14.85 oz.	9.375" H 8.75" V	Crypton®	85,000 Double Rubs	40 hours	Cal. 117-E NFPA 260 (Equiv. to UFAC)	C
GUARDIAN <i>Directional</i>	100% Vinyl 100% Knitted Polyester	25 oz.	Non-Matching	Blockade® Nanocide®	3,000,000 Double Rubs	1,000 hours	Cal. 117-E NFPA 260 (Equiv. to UFAC) FMVSS 302 IMO A.652(16) 8.2	W
HABITAT <i>Directional</i>	100% Polyester Crypton® Backing	14.40 oz.	3.5" H 5" V	Crypton®	75,000 Double Rubs	40 hours	Cal. 117-E NFPA 260 (Equiv. to UFAC)	C
JITTERBUG <i>Directional</i>	100% Polyester Crypton® Backing	14.75 oz.	2.375" H 7" V	Crypton®	70,000 Double Rubs	40 hours	Cal. 117-E NFPA 260 (Equiv. to UFAC)	C
RAIN DANCE <i>Directional Shown Railroaded</i>	100% Polyester Crypton® Backing	15.21 oz.	2.375" H 4.75" V	Crypton®	70,000 Double Rubs	40 hours	Cal. 117-E NFPA 260 (Equiv. to UFAC)	C
SOCIAL NETWORK <i>Directional</i>	100% Polyester Crypton® Backing	15.29 oz.	3.5" H 6" V	Crypton®	70,000 Double Rubs	40 hours	Cal. 117-E NFPA 260 (Equiv. to UFAC)	C
STANZA <i>Directional</i>	100% Polyester Crypton® Backing	9.36 oz.	3.75" H 0" V	Crypton®	50,000 Double Rubs	40 hours	Cal. 117-E NFPA 260 (Equiv. to UFAC)	C

All patterns may comply with California Technical Bulletin 133 when combined with appropriate components.

### CRYPTON REDUCED ENVIRONMENTAL IMPACT

Recycled Content - Acclaim



GREENGUARD Indoor Air Quality Certification requires products to meet some of the world's toughest chemical emissions standards. GREENGUARD Children & Schools Certification requires those products to meet or exceed additional criteria, including CA Section 01350, to account for the unique health sensitivities of children.

All Crypton products are environmentally preferable. Crypton is produced in a world-class manufacturing operation. Crypton is committed to green and has incorporated Crypton's optimized green formulation in all Crypton upholstery, meaning a greener Crypton.

### CRYPTON BACTERIAL AND FUNGUS/MILDEW RESISTANCE

Non leaching Silver Ion Technology microbial protection.

Excellent anti-bacterial and anti-fungal properties as evidenced by the following methods: 4 and 5 millimeter-wide growth-free zones produced against the staphylococcus aureus test organism.

Crypton resists fungal growth, test AATCC 30-2004, Aspergillus niger (ATCC #6275).

Crypton resists bacterial growth, test ISO 20743: 2007(E), Klebsiella pneumoniae (ATCC #4352).

EPA Approved – When Crypton's Disinfectant and Deodorizer is used on Crypton Super Fabric, you have a disinfected fabric system. Crypton is the first and only fabric approved by the EPA proven to be disinfected. Crypton's Disinfectant and Deodorizer will kill MRSA, VRSA, IV, E. Coli, hepatitis and many more bacteria and viruses.

### CRYPTON STAIN RESISTANCE

Stain Resistance is based on a numerical scale with 5 being the highest for stain removal.

	After 5 min./After 24 hrs.		After 5 min./After 24 hrs.
Blood	Class 4-5/Class 4-5	Urine	Class 4-5/Class 4-5
Iodine	Class 4-5/Class 4-5	Suntan Lotion	Class 4-5/Class 4-5
Ketchup	Class 4-5/Class 4-5	Black Coffee	Class 4-5/Class 4-5
Milk	Class 4-5/Class 4-5	Cola	Class 4-5/Class 4-5

### CRYPTON CARE AND CLEANING INFORMATION

C: Crypton® Cleaning – Crypton fabrics are available in various fiber types, and all Crypton fabrics can be cleaned with soap and water. The ability to use bleach as a cleaner without damaging the fabric is fiber- and dye-dependent. Cryptons with solution-dyed (acrylic, nylon, olefin) fibers and all polyester Crypton selections can be cleaned safely with bleach; a 10% bleach and 90% water solution is recommended and thorough rinsing is required. For the best cleaning solution, use CRYPTON UPHOLSTERY CLEANER, available from Mayer Fabrics.

### ADDITIONAL INFORMATION

**Custom Capabilities:** All patterns can be custom colored. Minimum yardage applies.

**Memo Samples:** Please keep this card intact. Individual memo samples can be ordered on our website or by contacting customer service.

**Color matching:** Mayer Fabrics always attempts to ship a satisfactory commercial match. Because of industry standard dye lot variation, colors may not match exactly.

**Specifications:** Specifications are correct at the time of printing. Additional specifications are available on our website.

For information or assistance with products or services, call us at 800.428.4415 or refer to our website, [www.mayerfabrics.com](http://www.mayerfabrics.com).



GSA Contract #GS-28F-0022P

MAYERFABRICS

☎ 317.267.2626 or 800.428.4415 ☎ 317.267.2629 or 877.7SAMPLE

[www.mayerfabrics.com](http://www.mayerfabrics.com)

©2012 Mayer-Paetz, Inc.

PCPICCD 50112