

# POSITIVE THOUGHTS CRYPTON PLUS COORDINATES

---





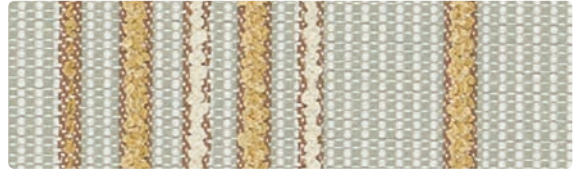
**FAIRY TALES**  
WC963-014 Mermaid



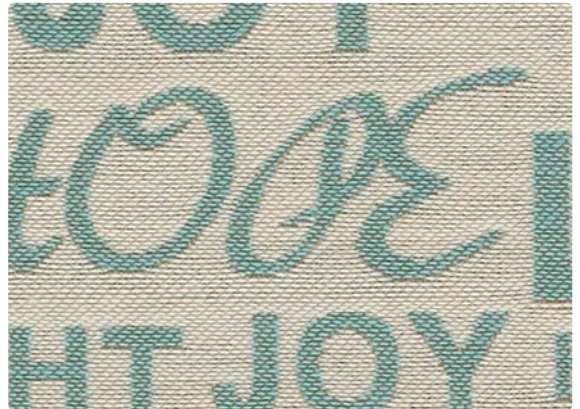
**CUDDLE UP**  
WC962-013 Lichen



**CUDDLE UP**  
WC962-014 Seamist



**BIG TOP**  
WC961-014 Sky Blue



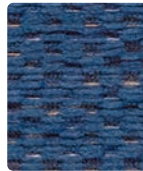
**POSITIVE THOUGHTS**  
WC964-004 Peace



**CUDDLE UP**  
WC962-003 Grass Green



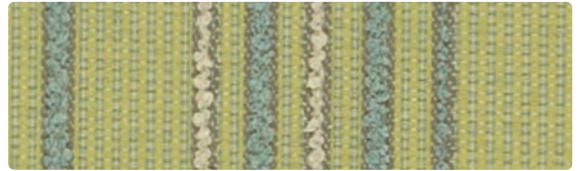
**CUDDLE UP**  
WC962-023 Lakeside



**CUDDLE UP**  
WC962-004 Deep Sea



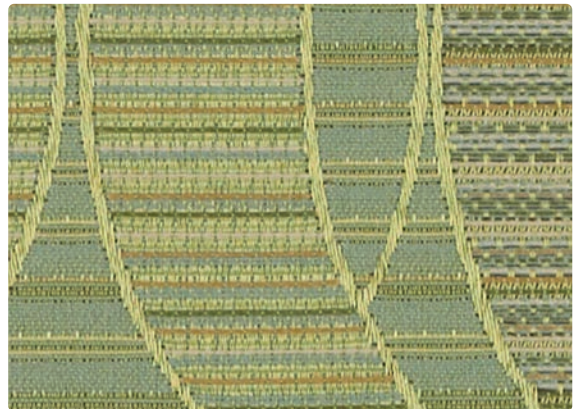
**POSITIVE THOUGHTS**  
WC964-003 Hope



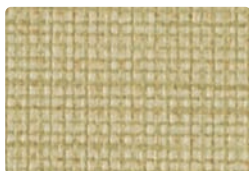
**BIG TOP**  
WC961-003 Limeade



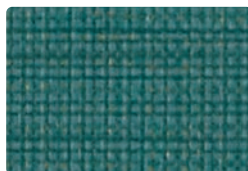
**BIG TOP**  
WC961-004 Blueberry



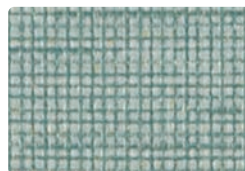
**FAIRY TALES**  
WC963-003 Bean Stalk



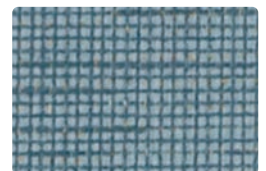
**CONTEMPO FR**  
CN-003 Willow



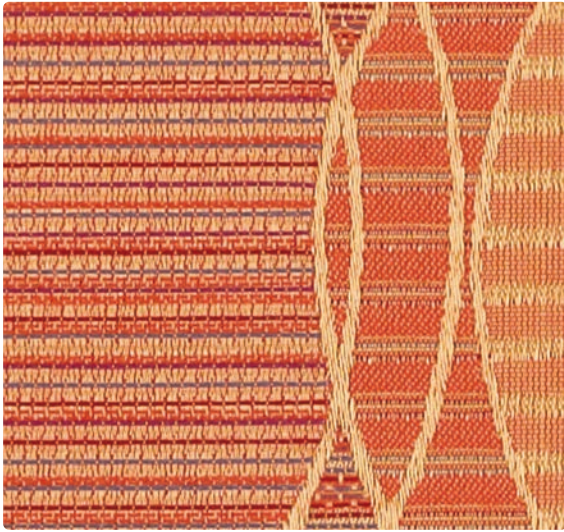
**CONTEMPO FR**  
CN-023 Teal



**CONTEMPO FR**  
CN-014 Surf



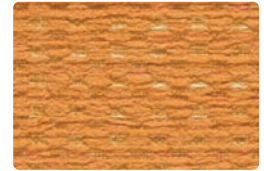
**CONTEMPO FR**  
CN-004 Denim



**FAIRY TALES**  
WC963-009 Pinocchio



**CUDDLE UP**  
WC962-002 Morning Sun



**CUDDLE UP**  
WC962-019 Mango



**BIG TOP**  
WC961-002 Sawdust



**CUDDLE UP**  
WC962-009 Ember



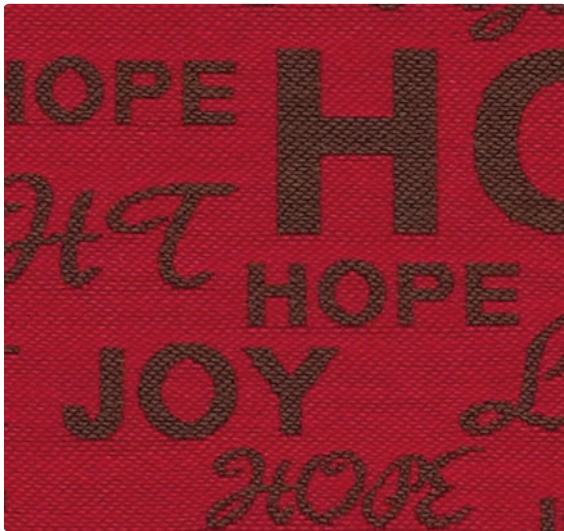
**CUDDLE UP**  
WC962-001 Fireside



**CUDDLE UP**  
WC962-008 Cabernet



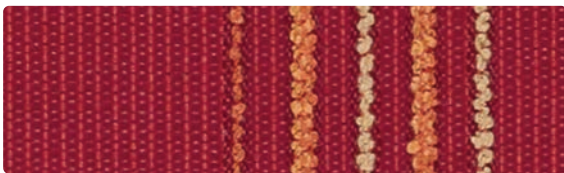
**POSITIVE THOUGHTS**  
WC964-001 Elation



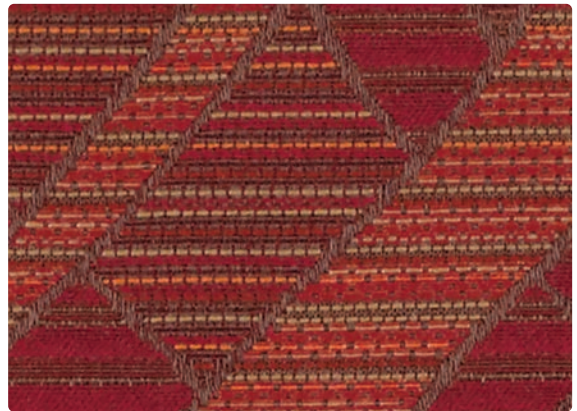
**POSITIVE THOUGHTS**  
WC964-011 Bliss



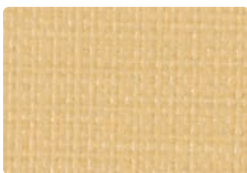
**BIG TOP**  
WC961-009 Dreamsicle



**BIG TOP**  
WC961-001 Candy Apple



**FAIRY TALES**  
WC963-001 Apple



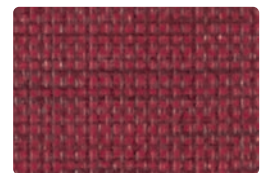
**CONTEMPO FR**  
CN-002 Lemon



**CONTEMPO FR**  
CN-019 Caramel



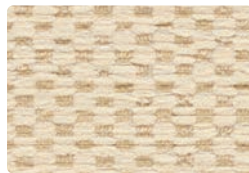
**CONTEMPO FR**  
CN-009 Sunset



**CONTEMPO FR**  
CN-001 Scarlet



**FAIRY TALES**  
WC963-002 Golden Goose



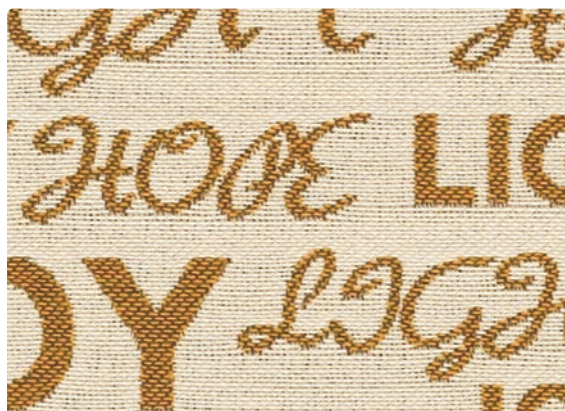
**CUDDLE UP**  
WC962-007 Snow Drift



**CUDDLE UP**  
WC962-000 Greyhound



**BIG TOP**  
WC961-007 Popcorn



**POSITIVE THOUGHTS**  
WC964-002 Light



**CUDDLE UP**  
WC962-020 Clamshell



**CUDDLE UP**  
WC962-010 Blue Heron



**CUDDLE UP**  
WC962-006 Espresso



**POSITIVE THOUGHTS**  
WC964-000 Serenity



**BIG TOP**  
WC961-016 Elephant



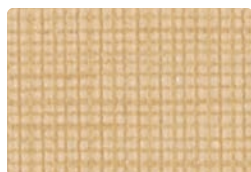
**BIG TOP**  
WC961-006 Midnight



**FAIRY TALES**  
WC963-000 Wicked Witch



**CONTEMPO FR**  
CN-007 Bisque



**CONTEMPO FR**  
CN-017 Buff



**CONTEMPO FR**  
CN-006 Greige



**CONTEMPO FR**  
CN-000 Espresso

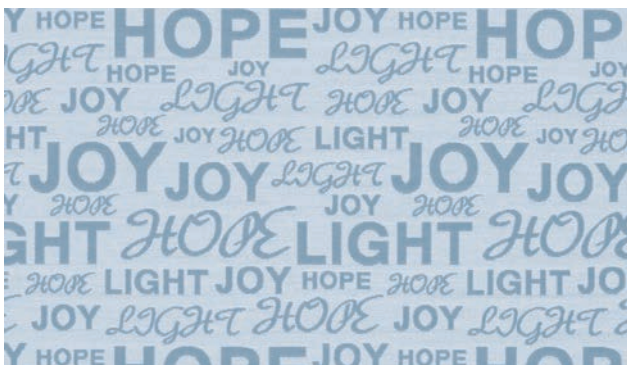
All gray scales shown at 25%.



BIG TOP - Repeat: 3.875" H, 0" V



FAIRY TALES - Repeat: 7.5" H, 11.875" V



POSITIVE THOUGHTS - Repeat: 7.5" H, 6.875" V

#### CRYPTON CLEANING INFORMATION - Big Top, Cuddle Up, Fairy Tales, Positive Thoughts

C: Crypton® Cleaning – Crypton fabrics are available in various fiber types, and all Crypton fabrics can be cleaned with soap and water. The ability to use bleach as a cleaner without damaging the fabric is fiber- and dye-dependent. Cryptons with solution-dyed (acrylic, nylon, olefin) fibers and all polyester Crypton selections can be cleaned safely with bleach, 1:10 ratio = 10% bleach, 90% water solution is recommended and thorough rinsing is required. For the best cleaning solution, use CRYPTON UPHOLSTERY CLEANER, available from Mayer Fabrics.

#### CONTEMPO FR CLEANING INFORMATION

WS: Water/Solvent Cleaner – Spot clean, with a mild solvent, an upholstery shampoo, or the foam from a mild detergent. When using a solvent or dry cleaning product, follow instructions carefully and clean only in a well-ventilated room. Avoid any product that contains carbon tetrachloride or other toxic materials. With either method, pretest a small area before proceeding.

**Normal Care and Cleaning:** Remove ordinary dirt and smudges with a mild soap and water solution and a clean, soft cloth or towel. Dry with a soft, lint-free cloth or towel. CAUTION: The use of vinyl "conditioners" or "protectants" is not recommended and should be avoided on vinyl upholstery treated with PreFixx® protective finish.

**Disinfecting:** Upholstery with PreFixx® protective finish can be disinfected with a diluted household **bleach** (sodium hypochlorite) solution (1:10 bleach to water ratio). Rinse with fresh water. Dry with a clean towel.

#### Special Cleaning Problems

Although upholstery treated with PreFixx® protective finish is resistant to most common stains, the dyes and pigments in some staining agents have the ability to create a permanent stain if not treated properly. To clean difficult stains from upholstery treated with PreFixx® protective finish, locate the staining agent in the lists below and follow its recommended cleaning method. For best results, treat all stains immediately.

**Cleaning Tip:** To determine the method and type of cleaners, the source of the stain should be identified.

**Staining Agents:** Baby oil, ketchup, chocolate, motor oil, olive oil, grape juice, urine, blood, hair oil tonic, tea, coffee, and betadine. Use Method 1.

**Staining Agents:** Eye shadow, crayon and grease. Use Method 1. If stains remain, use Method 2.

**Staining Agents:** Tobacco tar (nicotine), permanent felt tip marker, yellow mustard, lipstick, ballpoint pen and spray paint. Use Method 1. If stains remain, use Method 2. For stubborn stains still remaining, use Method 3.

The recommended cleaners used in Cleaning Methods 1, 2 and 3 are progressively more aggressive. Often it is better to begin with the least aggressive cleaner, and move to the next strongest only if the stain remains. NEVER EXCEED a staining agent's recommended cleaner or cleaning method, however.

**Method 1:** Use Formula 409® All-Purpose Spray cleaner or Fantastik® Spray Cleaner with a soft cloth or damp sponge. Rinse area with fresh water then dry with a clean, lint-free cloth.

**Method 2:** Use a solvent-type cleaner\*, such as rubbing (isopropyl) alcohol 91%. Rinse cleaned area with fresh water then dry with a clean, lint-free cloth.

**Method 3:** Use a strong, active solvent cleaner\* diluted in water (70% water/30% solvent cleaner) such as nail polish remover (acetone/water). Clean with a soft cloth or damp sponge. Stain should be removed with less than six (6) rubs. If the stain persists after six rubs, the stain has set and probably cannot be removed. Rinse cleaned area with fresh water, then dry with a clean, lint-free cloth.

\*CAUTION: Some solvents are highly flammable. Exercise proper care in cleaning and notify personnel in area of danger. Wear rubber gloves during all cleaning activities. Use caution in cleaning around buttons, stitching and wooden or decorative trim, since these solvents could seriously damage such areas.

FORMULA 409 is a registered trademark of the Clorox Company

FANTASTIK is a registered trademark of Dow Chemical Products Inc.

#### SPECIFIC TREATMENTS - Contempo FR

PreFixx® Protective Finish    Anti-Microbial/Anti-Bacterial Protection    Anti-Stain Finish/Easily Cleaned    Anti-Static Slip Finish    Urine Stain Resistant  
Mildew Resistant    Superior Disinfectant Resistance    Oil Resistant    Sulfide Stain Resistant/All Colors    UV Stabilized Pigments

PreFixx® The first protective finish that starts where other finishes finish. With PreFixx protection, it is possible to remove stains that could never be removed before. Now, with cost-proven stain resistance and cleanability, plus superior abrasion resistance, PreFixx protected vinyls protect you from high maintenance and frequent reupholstery costs.

# TECHNICAL INFORMATION

## Positive Thoughts Crypton Plus Coordinates

the common thread for the  This collection was inspired by B. Jane Barea, ASID, in support of The Common Thread for the Cure Foundation. Mayer Fabrics will donate 2% of all sales to The Common Thread for the Cure.

\* ACT® Registered Certification Marks

Pattern 54"	Content and Backing	GREENGUARD Certified	Weight/Linear Yd	Pattern Repeat	Finish	Abrasion  Wyzenbeek*	Light  Fastness*	Flammability  *	Cleaning Code
BIG TOP <i>Directional</i> <i>Shown Railroaded</i>	6% Recycled Polyester (4% Pre-/2% Post-Consumer), 94% Polyester Backing: Crypton®	Gold Certified	11.6 oz.	3.875" H 0" V	Crypton® with Antimicrobial Silver Ion Technology	85,000 Double Rubs	40 hours	Cal. 117-E NFPA 260 (Equiv. to UFAC)	C
CONTEMPO FR <i>Directional</i>	100% Vinyl Backing: Polyester Knit	Certified	28 oz.	Non-Matching	PreFix®	1,300,000 Double Rubs	650 hours	See Below	WS
CUDDLE UP <i>Directional</i>	82% Polyester, 18% Rayon Backing: Crypton®	Gold Certified	14.24 oz.	Non-Matching	Crypton® with Antimicrobial Silver Ion Technology	70,000 Double Rubs	40 hours	Cal. 117-E NFPA 260 (Equiv. to UFAC)	C
FAIRY TALES <i>Directional</i>	11% Recycled Polyester (7% Pre-/4% Post-Consumer), 89% Polyester Backing: Crypton®	Gold Certified	14.704 oz.	7.5" H 11.875" V	Crypton® with Antimicrobial Silver Ion Technology	51,000 Double Rubs	40 hours	Cal. 117-E NFPA 260 (Equiv. to UFAC)	C
POSITIVE THOUGHTS <i>Directional</i>	47% Post-Consumer Recycled Polyester, 53% Polyester Backing: Crypton®	Gold Certified	14 oz.	7.5" H 6.875" V	Crypton® with Antimicrobial Silver Ion Technology	75,000 Double Rubs	40 hours	Cal. 117-E NFPA 260 (Equiv. to UFAC)	C

Big Top, Cuddle Up, Fairy Tales and Positive Thoughts may comply with California Technical Bulletin 133 when combined with appropriate components. Contempo FR should comply with California Technical Bulletin 133 when combined with appropriate components.

### CONTEMPO FR FLAMMABILITY

California Technical Bulletin 117, Section E	Passes	Fed. Spec. CID A-A-2950 (supercedes CCC-A-680A)	Passes
NFPA 260 (Equivalent to UFAC) Class 1	Passes	FMVSS 302	Passes
Boston Fire Dept. Code (BFD 1X-1)	Passes	NFPA 701 (small scale)	Passes
FAA/FAR 25.853(a) & App. F Part I (a)(ii)	Passes	NY & NJ Port Authority Code	Passes

### REDUCED ENVIRONMENTAL IMPACT - Big Top, Cuddle Up, Fairy Tales, Positive Thoughts

GREENGUARD and GREENGUARD Gold Certified products are tested for low chemical emissions to standard UL 2818. For more information, visit [UL.com/gg](http://UL.com/gg).

All Crypton products are environmentally preferable. Crypton is produced in a world-class manufacturing operation. Crypton is committed to green and has incorporated Crypton's optimized green formulation in all Crypton upholstery, meaning a greener Crypton.

### REDUCED ENVIRONMENTAL IMPACT - Big Top, Fairy Tales

Recycled Content

### CRYPTON BACTERIAL AND FUNGUS/MILDEW RESISTANCE

Non leaching Silver Ion Technology microbial protection.

Excellent anti-bacterial and anti-fungal properties as evidenced by the following methods: 4 and 5 millimeter-wide growth-free zones produced against the staphylococcus aureus test organism.

Crypton resists fungal growth, test AATCC 30-2004, Aspergillus niger (ATCC #6275).

Crypton resists bacterial growth, test ISO 20743: 2007(E), Klebsiella pneumoniae (ATCC #4352).

EPA Approved - When Crypton's Disinfectant and Deodorizer is used on Crypton Super Fabric, you have a disinfected fabric system. Crypton is the first and only fabric approved by the EPA proven to be disinfected. Crypton's Disinfectant and Deodorizer will kill MRSA, VRSA, IV, E. Coli, hepatitis and many more bacteria and viruses.

### ADDITIONAL INFORMATION

Additional colors are available. Please refer to the Mayer Fabrics website or contact customer service.

**Custom Capabilities:** All patterns can be custom colored. Minimum yardage applies.

**Memo Samples:** Please keep this card intact. Individual memo samples can be ordered on our website or by contacting customer service.

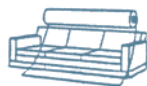
**Color matching:** Mayer Fabrics always attempts to ship a satisfactory commercial match. Because of industry standard dye lot variation, colors may not match exactly.

**Specifications:** Specifications are correct at the time of printing. Additional specifications are available on our website.

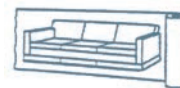
For information or assistance with products or services, call us at 800.428.4415 or refer to our website, [www.mayerfabrics.com](http://www.mayerfabrics.com).



Railroaded: This feature allows reduction of seams and enables smoother furniture tailoring.



Fabric "up the roll" or "regular" position



Fabric "railroaded" or "top selvage" position

We recommend all railroaded patterns should be upholstered as shown on card.

GSA Contract #GS-28F-0022P



MAYERFABRICS

PTCPCCD  R51213

† 317.267.2626 or 800.428.4415 ‡ 317.267.2629 or 877.7SAMPLE  
www.mayerfabrics.com  
©2012 Mayer-Paetz, Inc.