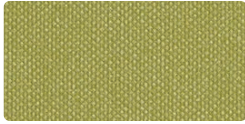




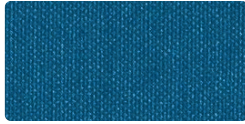
# CRYPTON & VINYL COORDINATES

---





**SILVERWEAVE FR**  
SW-013 Willow



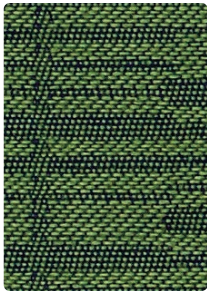
**SILVERWEAVE FR**  
SW-044 Calypso



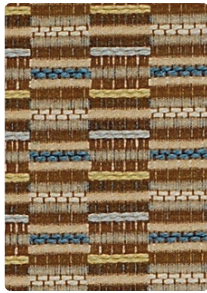
**SILVERWEAVE FR**  
SW-004 Indigo



**SILVERWEAVE FR**  
SW-014 Baltic



**RATIO**  
WC792-013 Jade



**REPLAY**  
WC790-023 Oasis



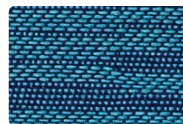
**AMADEUS**  
WC729-007 Natural



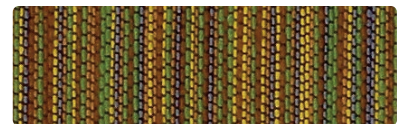
**DEBONAIR**  
WC703-003 Aloe



**CURLICUE FR**  
CC-013 Basil



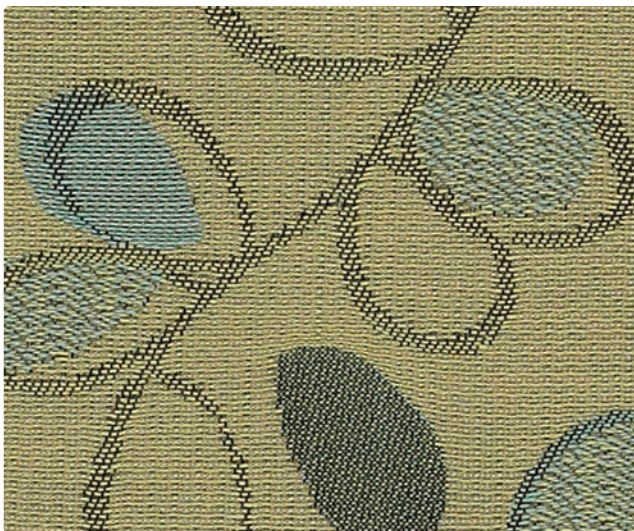
**RATIO**  
WC792-024 Aegean



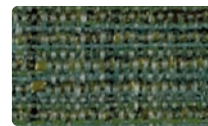
**TIME LINE**  
WC795-003 Meadow



**NOSTALGIA**  
WC728-013 Oregano



**WHIMSY**  
WC734-014 Opal



**DEBONAIR**  
WC703-014 Eucalyptus



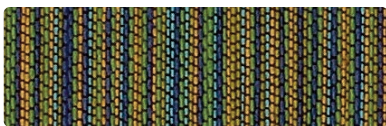
**CURLICUE FR**  
CC-044 Blue Mist



**NOSTALGIA**  
WC728-014 Capri



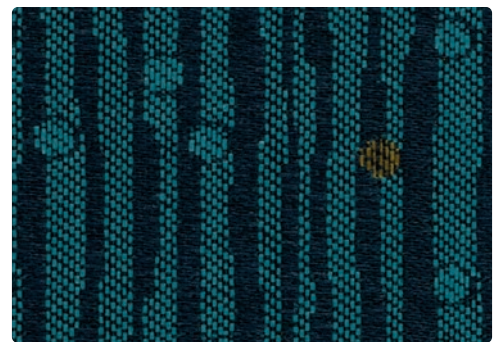
**CURLICUE FR**  
CC-014 Azure



**TIME LINE**  
WC795-014 Capri



**CURLICUE FR**  
CC-004 Indigo



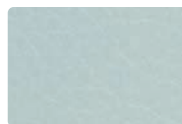
**RAIN DANCE**  
WC956-004 Lake



**CARESSA FR**  
CA-083 Wasabi



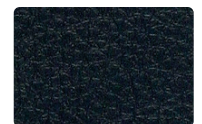
**CARESSA FR**  
CA-093 Bluegrass



**CARESSA FR**  
CA-074 Spa

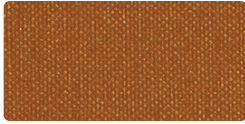


**CARESSA FR**  
CA-064 Cerulean



**CARESSA FR**  
CA-014 Admiral

Additional colors are available. Please refer to the Mayer website.



**SILVERWEAVE FR**  
SW-002 Sienna



**SILVERWEAVE FR**  
SW-019 Tangerine



**SILVERWEAVE FR**  
SW-009 Cayenne



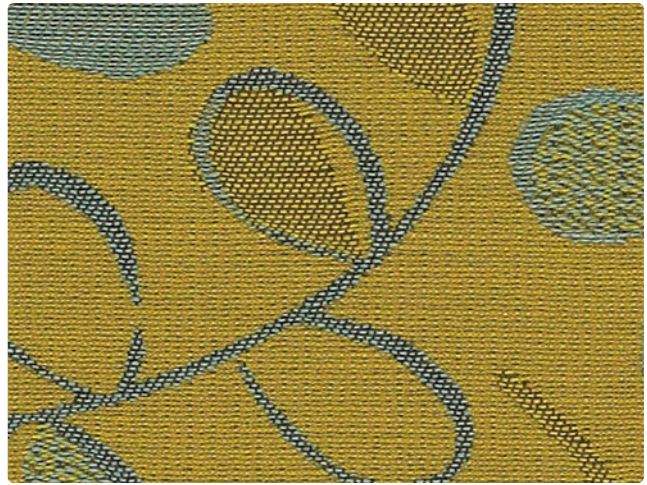
**SILVERWEAVE FR**  
SW-005 Eggplant



**REPLAY**  
WC790-017 Beachcomber



**DEBONAIR**  
WC703-002 Topaz



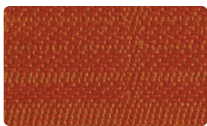
**WHIMSY**  
WC734-002 Marigold



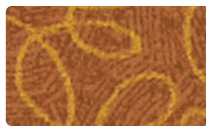
**NOSTALGIA**  
WC728-002 Ochre



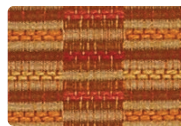
**CURLICUE FR**  
CC-002 Maize



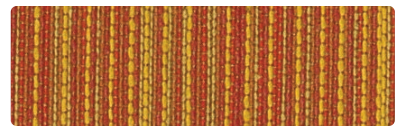
**RATIO**  
WC792-009 Persimmon



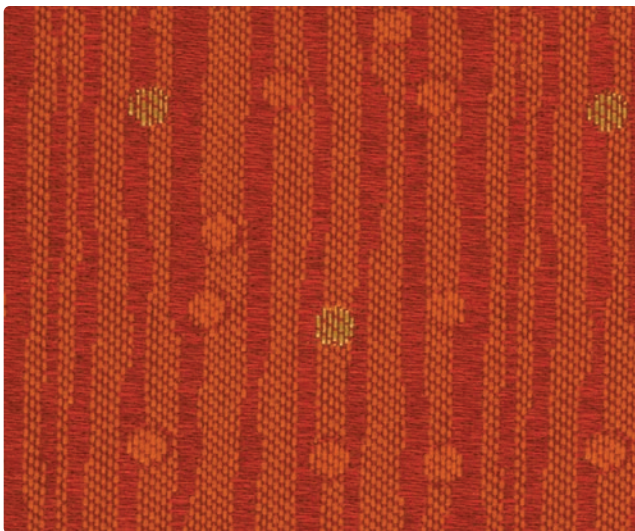
**CURLICUE FR**  
CC-019 Copper



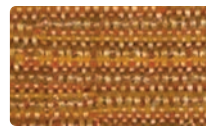
**REPLAY**  
WC790-009 Terra Cotta



**TIME LINE**  
WC795-009 Pumpkin



**RAIN DANCE**  
WC956-009 Flame



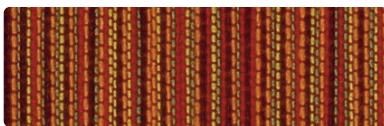
**DEBONAIR**  
WC703-009 Mango



**CURLICUE FR**  
CC-009 Tangerine



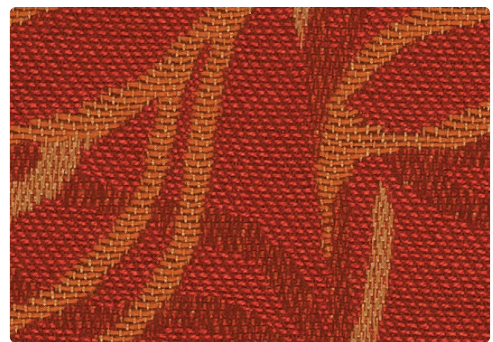
**NOSTALGIA**  
WC728-009 Amber



**TIME LINE**  
WC795-001 Fiesta



**CURLICUE FR**  
CC-001 Sangria



**AMADEUS**  
WC729-001 Vermillion



**CARESSA FR**  
CA-002 Butterscotch



**CARESSA FR**  
CA-029 Ochre



**CARESSA FR**  
CA-019 Bittersweet



**CARESSA FR**  
CA-051 Paprika



**CARESSA FR**  
CA-031 Brick

Additional colors are available. Please refer to the Mayer website.

Healthcare Furnishings - Crypton & Vinyl Coordinates (R)



**SILVERWEAVE FR**  
SW-007 Camel



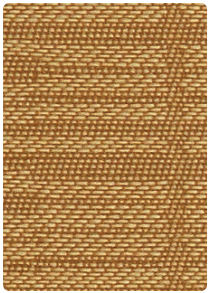
**SILVERWEAVE FR**  
SW-017 Doe



**SILVERWEAVE FR**  
SW-020 Mica



**SILVERWEAVE FR**  
SW-000 Cocoa



**RATIO**  
WC792-007 Chamois



**REPLAY**  
WC790-007 Mushroom



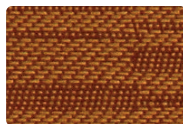
**CURLICUE FR**  
CC-012 Filigree



**DEBONAIR**  
WC703-017 Hemp



**DEBONAIR**  
WC703-012 Wheat



**RATIO**  
WC792-019 Terra Cotta



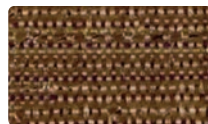
**TIME LINE**  
WC795-007 Beachcomber



**NOSTALGIA**  
WC728-007 Limestone



**WHIMSY**  
WC734-000 Dusk



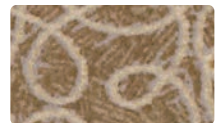
**DEBONAIR**  
WC703-010 Earth



**CURLICUE FR**  
CC-007 Parchment



**NOSTALGIA**  
WC728-020 Pecan



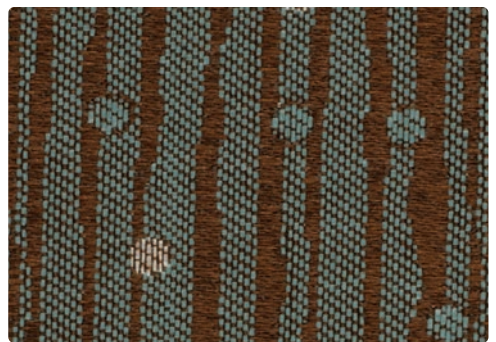
**CURLICUE FR**  
CC-020 Bronze



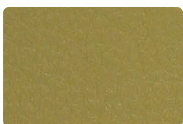
**TIME LINE**  
WC795-019 Bronze



**CURLICUE FR**  
CC-010 Bark



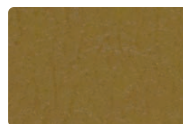
**RAIN DANCE**  
WC956-014 Zenith



**CARESSA FR**  
CA-027 Buff



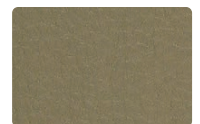
**CARESSA FR**  
CA-012 Mojave



**CARESSA FR**  
CA-030 Taupe



**CARESSA FR**  
CA-040 Java

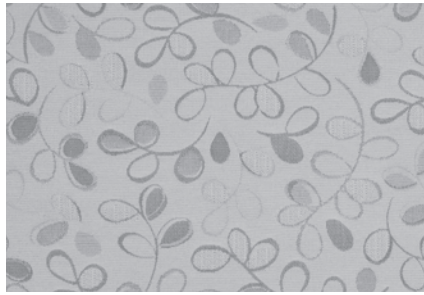


**CARESSA FR**  
CA-046 Stone

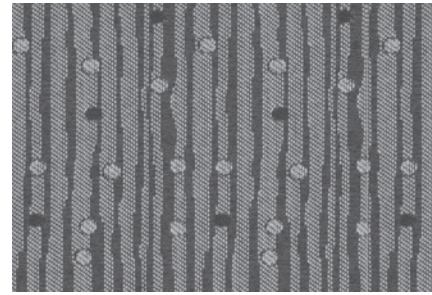
Additional colors are available. Please refer to the Mayer website.



AMADEUS - Repeat: 15" H, 12.125" V



WHIMSY - Repeat: 13.5" H, 13.5" V



RAIN DANCE - Repeat: 2.375" H, 4.75" V

**REDUCED ENVIRONMENTAL IMPACT**

GREENGUARD Certified and GREENGUARD Gold Certified products are tested for low chemical emissions to standard UL 2818. For more information, visit [UL.com/gg](http://UL.com/gg).

**Amadeus , Ratio, Replay, Whimsy** - Recycled Content

**Amadeus, Debonair, Nostalgia, Rain Dance, Ratio, Replay, Time Line, Whimsy**

All Crypton products are environmentally preferable. Crypton is produced in a world-class manufacturing operation. Crypton is committed to green and has incorporated Crypton's optimized green formulation in all Crypton upholstery, meaning a greener Crypton.

**Caressa FR** - 3 Phthalates were not used in production (BBP, DEP, DNHP) Tris Free

**Ratio, Replay, Whimsy**



**Ratio, Replay**



**STAIN RESISTANCE**

**Caressa FR**

Stain Resistance per CFFA 141 - Class 5 (Excellent) rating:

Ketchup	Mayonnaise	Soy Sauce	Butter	Tea	Whiskey	Coffee	Soda
Blood	Urine	Iodine/Betadine	Mascara	Hair Spray	Suntan Lotion	Lipstick	Motor Oil

**Amadeus, Debonair, Nostalgia, Rain Dance, Ratio, Replay, Time Line, Whimsy**

All listed items have a Class 4-5 rating, which is based on a numerical scale with 5 being the highest for stain removal.

Blood	Iodine	Ketchup	Milk	Urine	Suntan Lotion	Black Coffee	Cola
-------	--------	---------	------	-------	---------------	--------------	------

**SPECIFIC TREATMENTS**

**Caressa FR**

Stain Resistant with Resilience<sup>SR</sup> Abrasion Resistant Anti-Bacterial Anti-Microbial Sulfide Stain Resistant Mildew Resistant Bleach Cleanable

**Resilience<sup>SR</sup>**

ENDURING PROTECTION Resilience<sup>SR</sup> represents the latest technology in faux leather and vinyl protection, enhancing performance where it is needed the most.

**Stain Resistance:** With proper care, materials treated with Resilience<sup>SR</sup> can be easily cleaned and will guard against stains maintaining the desired surface appearance for years to come.

**Anti-Microbial & Anti-Bacterial Protection:** Products treated with Resilience<sup>SR</sup> are engineered to inhibit bacterial growth, as well as fungus, mold and mildew spores, resulting in a more hygienic environment.

**Abrasion Resistance:** Resilience<sup>SR</sup> provides additional wear properties and surface durability to any vinyl or faux leather, thereby increasing the life of the material.

Resilience<sup>SR</sup> is not visible, and does not affect the hand of the material. Resilience<sup>SR</sup> is engineered to last, even after repeated cleaning and wear. Specify Resilience<sup>SR</sup> for the most demanding healthcare and hospitality applications.

**Curlicue**

PreFixx<sup>®</sup> Protective Finish Anti-Microbial/Anti-Bacterial Protection Anti-Stain Finish/Easily Cleaned Anti-Static Slip Finish Urine Stain Resistant  
Mildew Resistant Superior Disinfectant Resistance Oil Resistant Sulfide Stain Resistant/All Colors UV Stabilized Pigments

**CRYPTON BACTERIAL AND FUNGUS/MILDEW RESISTANCE SECTION - Amadeus, Debonair, Nostalgia, Rain Dance, Ratio, Replay, Time Line, Whimsy**

Non leaching Silver Ion Technology microbial protection.

Excellent anti-bacterial and anti-fungal properties as evidenced by the following methods: 4 and 5 millimeter-wide growth-free zones produced against the staphylococcus aureus test organism.

Crypton resists fungal growth, test AATCC 30-2004, Aspergillus niger (ATCC #6275).

Crypton resists bacterial growth, test ISO 20743:2007(E), Klebsiella pneumoniae (ATCC #4352)

EPA Approved – When Crypton's Disinfectant and Deodorizer is used on Crypton Super Fabric, you have a disinfected fabric system. Crypton is the first and only fabric approved by the EPA proven to be disinfected. Crypton's Disinfectant and Deodorizer will kill MRSA, VRSA, IV, E. Coli, hepatitis and many more bacteria and viruses.

**CLEANING INFORMATION**

**Amadeus, Debonair, Nostalgia, Rain Dance, Ratio, Replay, Time Line, Whimsy**

C: Crypton<sup>®</sup> Cleaning – Crypton fabrics are available in various fiber types, and all Crypton fabrics can be cleaned with soap and water. For the best cleaning solution, use CRYPTON UPHOLSTERY CLEANER, available from Mayer Fabrics.

**Caressa FR, Curlicue, Debonair, Nostalgia, Rain Dance, Ratio, Replay, SilverWeave FR, Whimsy**

BC: Bleach Cleanable - 1 part bleach, 9 parts water = 10% bleach, 90% water solution. Do not clean/disinfect fabric for longer than 10 minutes using the 10% bleach solution. Always rinse promptly with clean water after applying the bleach solution. Failure to do so will void any and all warranties.

**Caressa FR, Curlicue, SilverWeave**

WS: Water/Solvent Cleaner – Spot clean with a mild solvent, an upholstery shampoo, or the foam from a mild detergent. When using a solvent or dry cleaning product, follow instructions carefully and clean only in a well-ventilated room. Avoid any product that contains carbon tetrachloride or other toxic materials. With either method, pretest a small area before proceeding. Always rinse promptly with clean water.

**SilverWeave FR**

Remove stains with one of the following steps:

Step 1 (eye shadow, mascara, grease, black felt tip pen, crayon, chocolate, suntan lotion, hair and body oils): Remove excess spill with a damp cloth. Clean with a 1:1 mix of Ivory<sup>®</sup> liquid soap and water. Next, rinse with clean water and dry.

Step 2 (red lipstick): Use a straight application of concentrated cleaners such as Formula 409 or Fantastik spray cleaner. Wipe with a clean cloth, rinse with clean water, and dry.

Step 3 (blood, urine, feces, oil base paint, tar and asphalt): Use a 1:1 mix of ammonia and water, or a 1:4 mix of bleach and water. Rinse with clean water and dry.

Steps 4 & 5 (all other touch stains): Step 4: Use a straight application of naphtha (lighter fluid). Rinse thoroughly with clean water and pat surface dry. Step 5: Use a 1:1 mix of isopropyl alcohol and water. If the stain persists, use straight alcohol. Rinse thoroughly with clean water and pat dry.




Note: For cleaning that requires step 4 or 5, use a soft cotton cloth saturated with the cleaning material and rub the stain in circles 10 times. Pat dry with another soft cotton cloth and check the results. Please refer to the Mayer Fabrics website or contact customer service for approval of unlisted cleaning agents prior to use.

**For additional cleaning information please refer to the Mayer Fabrics website.**

# TECHNICAL INFORMATION

## Crypton & Vinyl Coordinates

\*Certification Marks Owned by ACT®.

Pattern 54"	Content and Backing	GREENGUARD Certified	Weight/ Linear Yd	Pattern Repeat	Finish	Abrasion  Wyzenbeek	Light  Fastness	Flammability 	Cleaning Code
AMADEUS <i>Directional</i>	42% Recycled Polyester (27% Pre-/15% Post-Consumer), 36% Cotton, 22% Rayon Backing: Crypton®	Gold Certified	15.696 oz.	15" H 12.125" V	Crypton® with Antimicrobial Silver Ion Technology	60,000 DR	40 hours	Cal. 117-2013 NFPA 260 (Equiv. to UFAC)	C
CARESSA FR	100% Vinyl Backing: 100% Polyester	Certified	29 oz.	None	Resilience <sup>SR</sup>	650,000 DR	1000 hours	See below	WS, BC
CURLICUE <i>Directional</i>	100% Vinyl Backing: Polyester Terry Loop Knit	Certified	28oz.	Non-Matching	PreFixx®	1,300,000 DR	650 hours	See below	WS, BC
DEBONAIR <i>Directional</i>	100% Polyester Backing: Crypton®	Gold Certified	18.48oz.	13.5" H 16.25" V Non-Matching	Crypton® with Antimicrobial Silver Ion Technology	105,000 DR	40 hours	Cal. 117-2013 NFPA 260 (Equiv. to UFAC)	C, BC
NOSTALGIA <i>Directional</i>	100% Polyester Backing: Crypton®	Gold Certified	17.64 oz.	Non-Matching	Crypton® with Antimicrobial Silver Ion Technology	100,000 DR	40 hours	Cal. 117-2013 NFPA 260 (Equiv. to UFAC)	C, BC
RAIN DANCE <i>Directional Railroaded</i>	100% Polyester Backing: Crypton®	Gold Certified	15.21 oz.	2.375" H 4.75" V	Crypton® with Antimicrobial Silver Ion Technology	70,000 DR	40 hours	Cal. 117-2013 NFPA 260 (Equiv. to UFAC)	C, BC
RATIO <i>Directional</i>	100% Pre-Consumer Recycled Polyester Backing: Crypton® Green	Gold Certified	17.3 oz.	3.38" H 3.38" V	Crypton® Green with Antimicrobial Silver Ion Technology	100,000 DR	60 hours	Cal. 117-2013 NFPA 260 (Equiv. to UFAC)	C, BC
REPLAY <i>Directional</i>	100% Recycled Polyester (57% Pre-/43% Post-Consumer) Backing: Crypton® Green	Gold Certified	16.6 oz.	0.625" H 0.5" V	Crypton® Green with Antimicrobial Silver Ion Technology	50,000 DR	40 hours	Cal. 117-2013 NFPA 260 (Equiv. to UFAC)	C, BC
SILVERWEAVE FR <i>Directional</i>	100% Vinyl/Urethane Topcoat Backing: 100% Polyester Hi-Loft <sup>2TM</sup>	Certified	30 oz.	None	SILVERGUARD® and PERMABLOK®	930,000 DR	1000 hours	See below	refer to cleaning section
TIME LINE <i>Directional Railroaded</i>	54% Cotton, 46% Polyester Backing: Crypton®	Gold Certified	15.43 oz.	2.25" H 0" V	Crypton® with Antimicrobial Silver Ion Technology	111,000 DR	40 hours	Cal. 117-2013 NFPA 260 (Equiv. to UFAC)	C
WHIMSY <i>Directional</i>	60% Next Post-Consumer Recycled Polyester, 40% Polyester Backing: Crypton® Green	Gold Certified	17.79 oz.	13.5" H 13.5" V	Crypton® Green with Antimicrobial Silver Ion Technology	50,000 DR	40 hours	Cal. 117-2013 NFPA 260 (Equiv. to UFAC)	C, BC

All patterns may comply with California Technical Bulletin 133 when combined with appropriate components.

### FLAMMABILITY - Caressa FR

California Technical Bulletin 117-2013 Passes  
 NFPA 260 (Equivalent to UFAC) Class 1 Passes  
 ASTM E84 (Adhered) Class 1 or A Passes  
 BIFMA CS-191-53, Section 3 Passes  
 BIFMA Upholstery, Section 4 Passes  
 Boston Fire Dept. Code (BFD 1X-1) Passes  
 FMVSS 302 Passes  
 IMO A.652(16) 8.2 & 8.3 Passes  
 NY & NJ Port Authority Passes

### FLAMMABILITY - Curlicue

California Technical Bulletin 117-2013 Passes  
 NFPA 260 (Equivalent to UFAC) Class 1 Passes  
 ASTM E84 (Adhered) Class 1 or A Passes  
 BIFMA Passes  
 Boston Fire Dept. Code (BFD 1X-1) Passes  
 FAA/FAR 25.853(a) & Appendix F Part I(a)(ii) Passes  
 Fed. Spec. CID A-A-2950/  
 supercedes CCC-A-680A Passes  
 FMVSS 302 Passes  
 IMO A.652(16) 8.2 & 8.3 Passes  
 NFPA 701 (small scale) Passes  
 NY & NJ Port Authority Passes

### FLAMMABILITY - SilverWeave FR

California Technical Bulletin 117-2013 Passes  
 NFPA 260 (Equivalent to UFAC) Class 1 Passes  
 BIFMA Passes  
 Boston Fire Dept. Code (BFD 1X-1) Passes  
 FAA/FAR 25.853(a) & Appendix F Part I(a)(ii) Passes  
 FMVSS 302 Passes  
 IMO A.652(16) 8.2 & 8.3 Passes  
 IMO FTP 2010 Code MSC.307(88),  
 Part 8, 3.1 & 3.2 Passes  
 NFPA 701 (small scale) Passes  
 NY & NJ Port Authority Passes

### ADDITIONAL INFORMATION

**Custom Capabilities:** All patterns can be custom colored. Minimum yardage applies.

**Memo Samples:** Please keep this card intact. Individual memo samples can be ordered on our website or by contacting customer service.

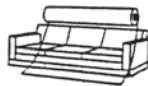
**Color matching:** Mayer Fabrics always attempts to ship a satisfactory commercial match. Because of industry standard dye lot variation, colors may not match exactly.

**Specifications:** Specifications are correct at the time of printing. Additional specifications are available on our website.

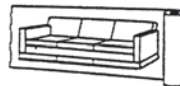
**For information or assistance with products or services, call us at 800.428.4415 or refer to the Mayer Fabrics website.**



Railroaded: This feature allows reduction of seams and enables smoother furniture tailoring.



Fabric "up the roll" or "regular" position



Fabric "railroaded" or "top selvage" position

We recommend all railroaded patterns should be upholstered as shown on card.

For memo samples contact:



811 Primrose Court, Pickering, ON L1X 2S8  
 phone: 905.839.2788; toll free: 1.800.450.2788  
 e-mail: info@healthcarefurnishings.ca  
 website: www.healthcarefurnishings.ca

† 317.267.2626 or 800.428.4415    F 317.267.2629 or 877.7SAMPLE  
 www.mayerfabrics.com  
 ©2015 Mayer-Paetz, Inc.

50315  
 HCFCVCCD