

VINYL II COORDINATES





MICRO DOT
MD-013 Fern



LINEN
LN-003 Green Tea



MICRO DOT
MD-024 Turquoise



LINEN
LN-014 Aquamarine



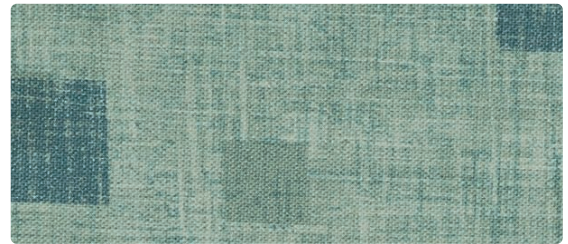
CURLICUE
CC-013 Basil



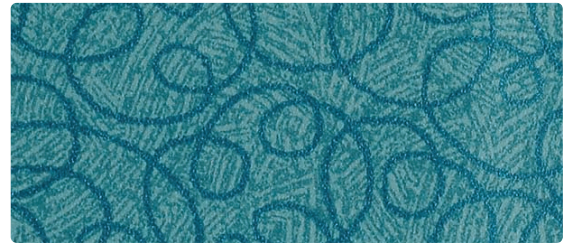
WILLOW
WI-014 Aquamarine



BLOCKS
BK-003 Meadow



BLOCKS
BK-004 Lagoon



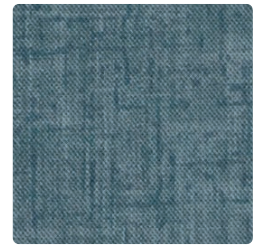
CURLICUE
CC-024 Aqua



WILLOW
WI-003 Green Tea



MICRO DOT
MD-004 Blue Ice



LINEN
LN-004 Marine



DURANGO
DU-023 Jade



DURANGO
DU-013 Basil



DURANGO
DU-024 Aegean



DURANGO
DU-014 Cyan



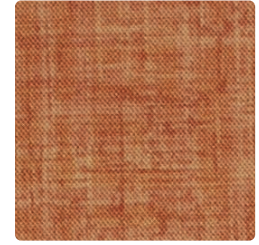
DURANGO
DU-004 Sapphire



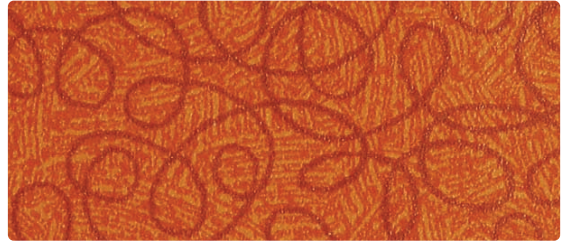
WILLOW
WI-019 Russet



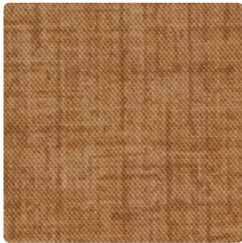
MICRO DOT
MD-009 Pumpkin



LINEN
LN-009 Tangerine



CURLICUE
CC-009 Tangerine



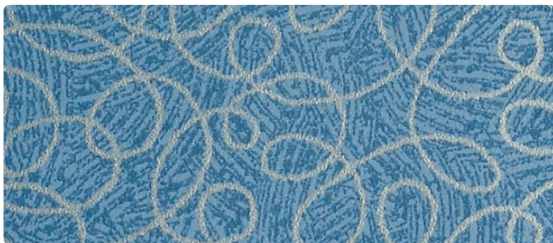
LINEN
LN-019 Russet



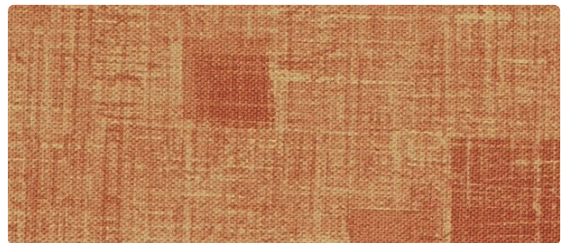
MICRO DOT
MD-019 Cinnamon



WILLOW
WI-009 Tangerine



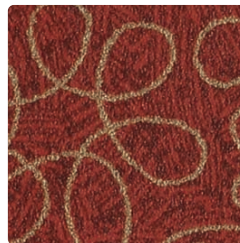
CURLICUE
CC-014 Azure



BLOCKS
BK-009 Grove



WILLOW
WI-004 Marine



CURLICUE
CC-001 Sangria



MICRO DOT
MD-008 Merlot



DURANGO
DU-002 Chamois



DURANGO
DU-019 Sepia



DURANGO
DU-009 Tangelo



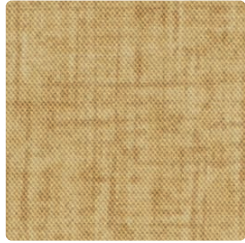
DURANGO
DU-029 Cordovan



DURANGO
DU-008 Merlot



CURLICUE
CC-002 Maize



LINEN
LN-002 Maize



BLOCKS
BK-007 Seashore



WILLOW
WI-002 Maize



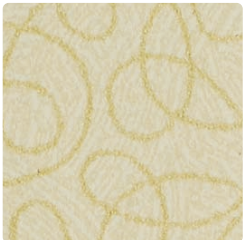
BLOCKS
BK-002 Wheat



LINEN
LN-007 Natural



MICRO DOT
MD-000 Latte



CURLICUE
CC-012 Filigree



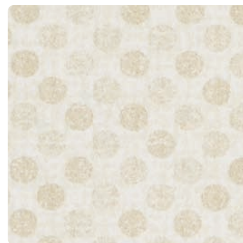
MICRO DOT
MD-007 Almond



CURLICUE
CC-010 Bark



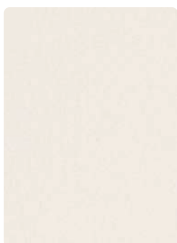
WILLOW
WI-007 Natural



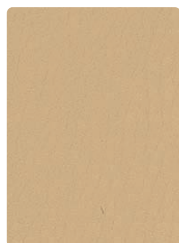
MICRO DOT
MD-017 Alabaster



CURLICUE
CC-006 Graphite



DURANGO
DU-017 Alabaster



DURANGO
DU-007 Natural



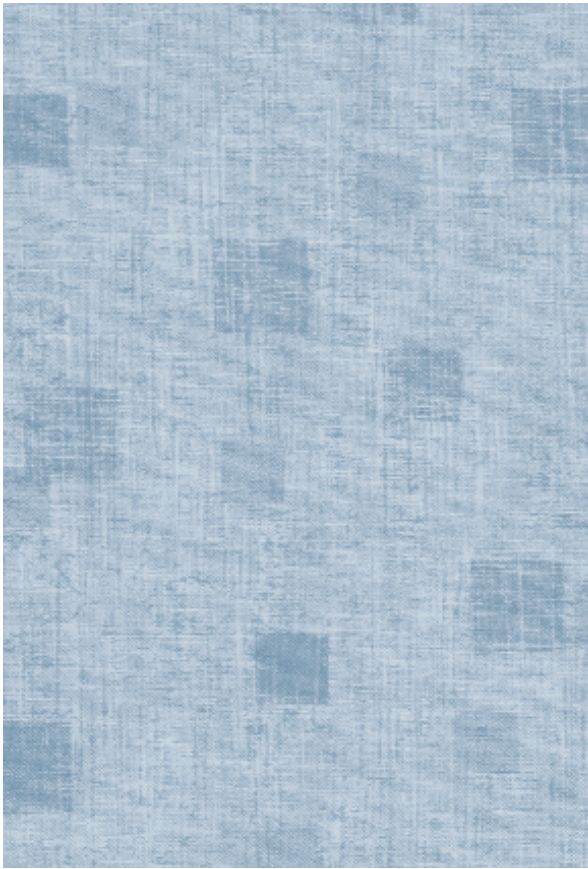
DURANGO
DU-010 Bombay



DURANGO
DU-000 Cocoa



DURANGO
DU-006 Black



BLOCKS - Repeat: 9.25" H, 8.5" V, Random Match



WILLOW - Repeat: 27" H, 19" V, Random Match

SPECIFIC TREATMENTS




PreFixx® Protective Finish Anti-Microbial/Anti-Bacterial Protection Anti-Stain Finish/Easily Cleaned Anti-Static Slip Finish Urine Stain Resistant
Mildew Resistant Backing and Face Superior Disinfectant Resistance Oil Resistant Sulfide Stain Resistant UV Stabilized Pigments

PreFixx® The first protective finish that starts where other finishes finish. With PreFixx protection, it is possible to remove stains that could never be removed before. Now, with cost-proven stain resistance and cleanability, plus superior abrasion resistance, PreFixx protected vinyls protect you from high maintenance and frequent reupholstery costs.

TECHNICAL INFORMATION

Vinyl II Coordinates

* ACT® Registered Certification Marks

Pattern 54"	Content and Backing	Weight/ Linear Yd	Pattern Repeat	Finish	Abrasion Wyzenbeek 	Light- Fastness 	Flammability 	Cleaning Code
BLOCKS FR <i>Directional</i>	100% Vinyl Polyester Knit Backing	28 oz.	9.25" H 8.5" V Non-matching	PreFixx®	1,300,000 Double Rubs	650 hours Suitable for marine use	See Below	WS
CURLICUE FR <i>Directional</i>	100% Vinyl Polyester Knit Backing	28 oz.	Non-matching	PreFixx®	1,300,000 Double Rubs	650 hours Suitable for marine use	See Below	WS
DURANGO FR	100% Vinyl Polyester Backing	30 oz.	None	PreFixx®	1,000,000 Double Rubs	650 hours Suitable for marine use	See Below	WS
MICRO DOT FR <i>Directional</i>	100% Vinyl Polyester Knit Backing	28 oz.	.25" H .25" V	PreFixx®	1,300,000 Double Rubs	650 hours Suitable for marine use	See Below	WS
LINEN FR <i>Directional</i>	100% Vinyl Polyester Knit Backing	28 oz.	Non-matching	PreFixx®	1,300,000 Double Rubs	650 hours Suitable for marine use	See Below	WS
WILLOW FR <i>Directional</i>	100% Vinyl Polyester Knit Backing	28 oz.	27" H 19" V Random Match	PreFixx®	1,300,000 Double Rubs	650 hours Suitable for marine use	See Below	WS

FLAMMABILITY - Blocks, Curlicue, Linen, Micro Dot, Willow

California Technical Bulletin 117, Section E
NFPA 260 (Equivalent to UFAC) Class 1
BIFMA
Boston Fire Dept. Code (BFD 1X-1)
FAA-FAR 25.853(a) & Appendix F Part 1 (a)(ii)
Federal Specifications CID A-A-2950
(supercedes Federal Specification CCC-A-680A)
FMVSS 302
IMO A.652 (16) 8.2 & 8.3
NFPA 701 (small scale)
NY & NJ Port Authority Code

Should comply with California Technical Bulletin 133 when combined with appropriate components.

Passes
Passes
Passes
Passes
Passes
Passes
Passes
Passes
Passes

FLAMMABILITY - Durango

California Technical Bulletin 117, Section E
NFPA 260 (Equivalent to UFAC) Class 1
BIFMA
Boston Fire Dept. Code (BFD 1X-1)
FAA-FAR 25.853(a) & Appendix F Part 1 (a)(ii)
Federal Specifications CID A-A-2950
(supercedes Federal Specification CCC-A-680A)
FMVSS 302
NFPA 701 (2010) Test 1
NY & NJ Port Authority Code Port Authority Code
Should comply with California Technical Bulletin 133 when combined with appropriate components.

Passes
Passes
Passes
Passes
Passes
Passes
Passes
Passes
Passes

CARE AND CLEANING INFORMATION

WS: Water/Solvent Cleaner – Spot clean, with a mild solvent, an upholstery shampoo, or the foam from a mild detergent. When using a solvent or dry cleaning product, follow instructions carefully and clean only in a well-ventilated room. Avoid any product that contains carbon tetrachloride or other toxic materials. With either method, pretest a small area before proceeding.

Normal Care and Cleaning: Remove ordinary dirt and smudges with a mild soap and water solution and a clean, soft cloth or towel. Dry with a soft, lint-free cloth or towel. CAUTION: The use of vinyl "conditioners" or "protectants" is not recommended and should be avoided on vinyl upholstery treated with PreFixx® protective finish.

Disinfecting: Upholstery with PreFixx® protective finish can be disinfected with a diluted household **bleach** (sodium hypochlorite) solution (1:10 bleach to water ratio). Rinse with fresh water. Dry with a clean towel.

Special Cleaning Problems

Although upholstery treated with PreFixx® protective finish is resistant to most common stains, the dyes and pigments in some staining agents have the ability to create a permanent stain if not treated properly. To clean difficult stains from upholstery treated with PreFixx® protective finish, locate the staining agent in the lists below and follow its recommended cleaning method. For best results, treat all stains immediately.

Cleaning Tip: To determine the method and type of cleaners, the source of the stain should be identified.

Staining Agents: Baby oil, ketchup, chocolate, motor oil, olive oil, grape juice, urine, blood, hair oil tonic, tea, coffee, and betadine. Use Method 1.

Staining Agents: Eye Shadow, crayon and grease. Use Method 1. If stains remain, use Method 2.

Staining Agents: Tobacco tar (nicotine), permanent felt tip marker, yellow mustard, lipstick, ballpoint pen and spray paint. Use Method 1. If stains remain, use Method 2. For stubborn stains still remaining, use Method 3.

The recommended cleaners used in Cleaning Methods 1, 2 and 3 are progressively more aggressive. Often it is better to begin with the least aggressive cleaner, and move to the next strongest only if the stain remains. NEVER EXCEED a staining agent's recommended cleaner or cleaning method, however.

Method 1: Use Formula 409® All-Purpose Spray cleaner or Fantastik® Spray Cleaner with a soft cloth or damp sponge. Rinse area with fresh water then dry with a clean, lint-free cloth.

Method 2: Use a solvent-type cleaner*, such as rubbing (isopropyl) alcohol 91%. Rinse cleaned area with fresh water then dry with a clean, lint-free cloth.

Method 3: Use a strong, active solvent cleaner* diluted in water (70% water/30% solvent cleaner) such as nail polish remover (acetone/water). Clean with a soft cloth or damp sponge. Stain should be removed with less than six (6) rubs. If the stain persists after six rubs, the stain has set and probably cannot be removed. Rinse cleaned area with fresh water, then dry with a clean, lint-free cloth.

*CAUTION: Some solvents are highly flammable. Exercise proper care in cleaning and notify personnel in area of danger. Wear rubber gloves during all cleaning activities. Use caution in cleaning around buttons, stitching and wooden or decorative trim, since these solvents could seriously damage such areas.

FORMULA 409 is a registered trademark of the Chlorox Company

FANTASTIK is a registered trademark of Dow Chemical Products Inc.

ADDITIONAL INFORMATION

Custom Capabilities: All patterns can be custom colored. Minimum yardage applies.

Memo Samples: Please keep this card intact. Individual memo samples can be ordered on our website or by contacting customer service.

Color matching: Mayer Fabrics always attempts to ship a satisfactory commercial match. Because of industry standard dye lot variation, colors may not match exactly.

Specifications: Specifications are correct at the time of printing. Additional specifications are available on our website.

For information or assistance with products or services, call us at 800.428.4415 or refer to our website, www.mayerfabrics.com.



MAYERFABRICS

GSA Contract #GS-28F-0022P

☎ 317.267.2626 or 800.428.4415 ☎ 317.267.2629 or 877.7SAMPLE

www.mayerfabrics.com

©2011 Mayer-Paetz, Inc.

VCIICD  50811