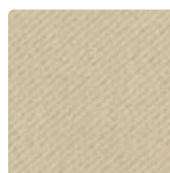


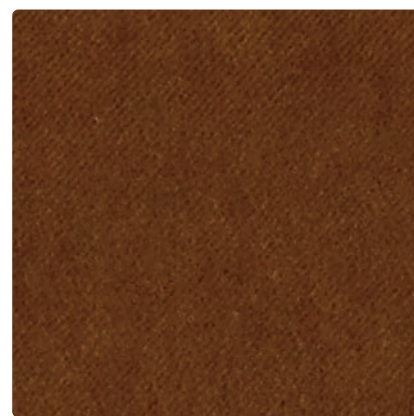
620-002  
Sunflower



620-013  
Limonade



620-063  
Chino



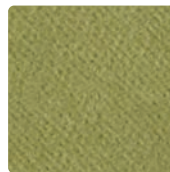
620-040  
Praline



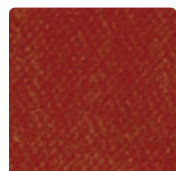
620-009  
Bittersweet



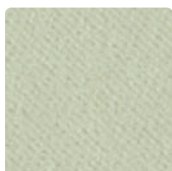
620-003  
Forest



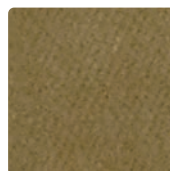
620-023  
Fern



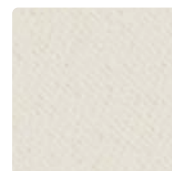
620-019  
Amber



620-073  
Celery



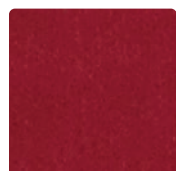
620-033  
Everglade



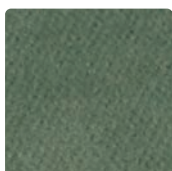
620-027  
Ivory



620-036  
Dove



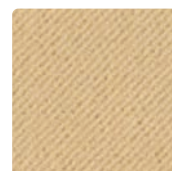
620-001  
Paprika



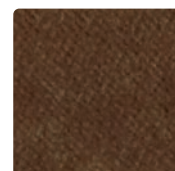
620-043  
Bluegrass



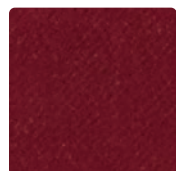
620-053  
Oregano



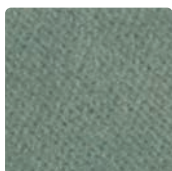
620-007  
Ecrú



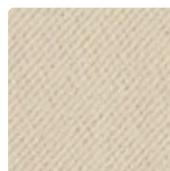
620-030  
Bark



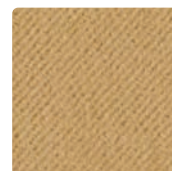
620-008  
Malbec



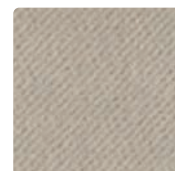
620-054  
Aegean



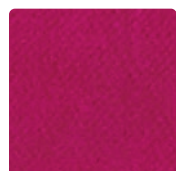
620-037  
Sand



620-017  
Buff



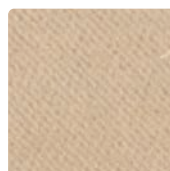
620-026  
Cloud



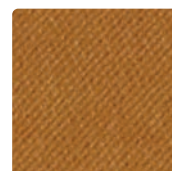
620-011  
Wildberry



620-034  
Aquamarine



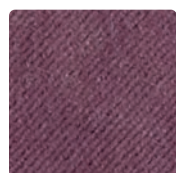
620-047  
Almond



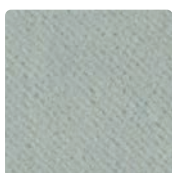
620-012  
Caramel



620-016  
Storm



620-005  
Hyacinth



620-024  
Cyan



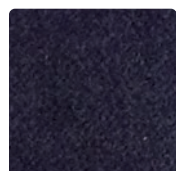
620-050  
Mushroom



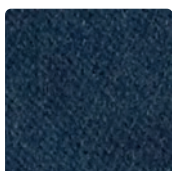
620-029  
Spice



620-006  
Charcoal



620-004  
Indigo



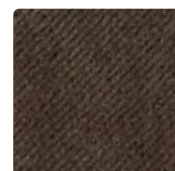
620-014  
Cerulean



620-000  
Sable



620-010  
Fudge



620-020  
Seal

**Application**  
Seating

**Content**  
82% Polyester, 18% Cotton

**Width**  
54 inches

**Abrasion**  
Exceeds 100,000 Double Rubs

**Finish**  
Stain Repellent

**Reduced Environmental Impact**  
GREENGUARD Gold Certified






**TECHNICAL INFORMATION**

Content: 82% Polyester, 18% Cotton  
 Width: 54"  
 Weight: 16.48 oz./linear yd.

Backing: Acrylic  
 Finish: Stain Repellent  
 Cleaning Code: S

Visual Repeat: None  
 Directional: Yes  
 Railroaded: No

**PERFORMANCE** (\*ACT\* Registered Certification Marks)

Test Method	Results
Surface Abrasion: Heavy Duty 	ASTM-D-4157 Exceeds 100,000 Double Rubs
Breaking Strength: 	ASTM-D-5034 Warp 187 lbs/Fill 183 lbs
Seam Slippage: 	ASTM-D-4034 Warp 103 lbs/Fill 99 lbs
Pilling Resistance:	ASTM-D-3511 Class 5
Colorfastness to Crocking: 	AATCC-8 Dry: Class 4 min. / Wet: Class 3 min.
Colorfastness to Light: 	AATCC-16 Class 4 min. at 40 hours

**FLAMMABILITY** 

California Technical Bulletin 117, Section E Passes  
 NFPA 260 (Equivalent to UFAC) Class 1 Passes  
 May comply with California Technical Bulletin 133 when combined with appropriate components.

**REDUCED ENVIRONMENTAL IMPACT**

**GREENGUARD Gold Certified products are tested for low chemical emissions to standard UL 2818. For more information, visit [UL.com/gg](http://UL.com/gg).**

**CLEANING INFORMATION**

S: Solvent – Spot clean using a mild water-free solvent or dry cleaning product. Clean only in a well-ventilated room and avoid any product containing carbon tetrachloride or other toxic materials. Pretest a small area before proceeding.

**ADDITIONAL INFORMATION**

**Custom Capabilities:** All patterns can be custom colored. Minimum yardage applies.  
**Memo Samples:** Please keep this card intact. Individual memo samples can be ordered on our website or by contacting customer service.  
**Color Matching:** Mayer Fabrics always attempts to ship a satisfactory commercial match. Because of industry standard dye lot variation, colors may not match exactly.  
**Specifications:** Specifications are correct at the time of printing. Current specifications are available on our website.  
**For information or assistance with products or services, call us at 800.428.4415 or refer to our website, [www.mayerfabrics.com](http://www.mayerfabrics.com).**



Water and Stain Repellent Finish



**MAYERFABRICS**

**GSA Contract #GS-28F-0022P**