

Panel Fabrics - Signature

To request a sample of a fabric shown on this card call 800.428.4415 or visit www.mayerfabrics.com



Nexus 159



Vanilla 017



Pistachio 003



Khaki 007



Fog 016



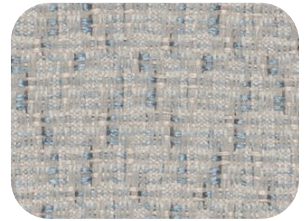
Mesa 009



Sandstone 010



Pewter 006



Sky 004



Earth 000



Zest 155



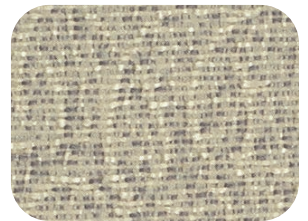
Fog 016



Quartz 007



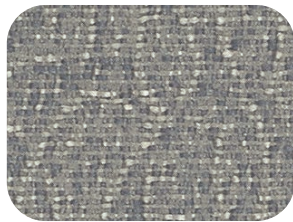
Zinc 006



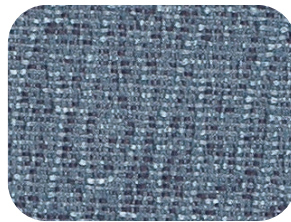
Meadow 003



Harvest 000



Sky 004



Harbor 014





Spice 009



TECHNICAL INFORMATION

Panel Fabrics - Signature

* ACT® Registered Certification Marks

Pattern 66"	Content and Backing	GREENGUARD Certified	Weight/ Linear Yd	Pattern Repeat	Finish	Light  Fastness	Flammability 	Cleaning Code
NEXUS <i>Directional</i>	100% Recycled Polyester (50% Pre-/50% Post-Consumer)	Gold Certified	10.4 oz.	1.454" H 1.454" V Non-Matching	None	40 hours	ASTM E84 Cal. 117-E NFPA 260 (Equiv. to UFAC)	WS
ZEST <i>Directional</i>	100% Pre-Consumer Recycled Polyester	Gold Certified	10.4 oz.	14.125" H 12.25" V Non-Matching	None	60 hours	ASTM E84 Cal. 117-E	WS

CARE AND CLEANING INFORMATION

WS: Water/Solvent Cleaner – Spot clean, with a mild solvent, an upholstery shampoo, or the foam from a mild detergent. When using a solvent or dry cleaning product, follow instructions carefully and clean only in a well-ventilated room. Avoid any product that contains carbon tetrachloride or other toxic materials. With either method, pretest a small area before proceeding.

Prompt cleaning is always recommended. Recommended cleaning steps are listed by type of stain. For best results follow steps in order.

REDUCED ENVIRONMENTAL IMPACT

GREENGUARD Gold Certified products are tested for low chemical emissions to standard UL 2818. For more information, visit UL.com/gg.

ADDITIONAL INFORMATION


Additional colors are available. Please contact Mayer Fabrics for more information.

Memo Samples: Please keep this card intact. Memo samples can be ordered on our website or by contacting customer service.

Color Matching: Mayer Fabrics always attempts to ship a satisfactory commercial match. Because of industry standard dye lot variation, colors may not match exactly.

Specifications: Specifications are correct at the time of printing. Current specifications are available on our website.

For information or assistance with products or services, call us at 800.428.4415 or refer to our website, www.mayerfabrics.com.

 This 100% polyester panel fabric is included in the Underwriters Laboratory Fabric Recognition Program. Additional testing of the U.L. recognized component fabric is not required on approved panels from participating manufacturers.

