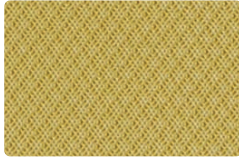
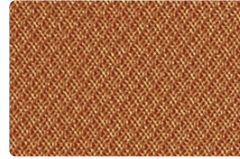


VINYL I COORDINATES

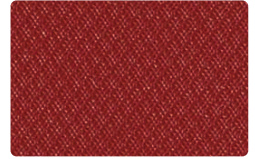




PEERLESS
PE-002 Sunglow



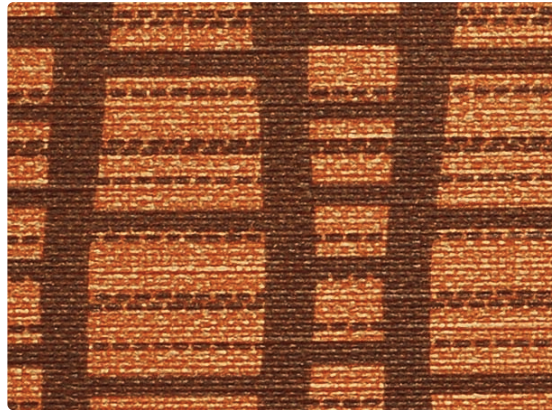
PEERLESS
PE-009 Copper



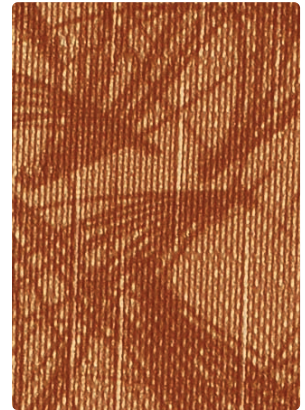
PEERLESS
PE-001 Sangria



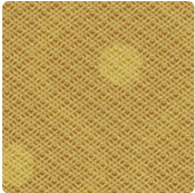
TUSSAH
TH-002 Sunglow



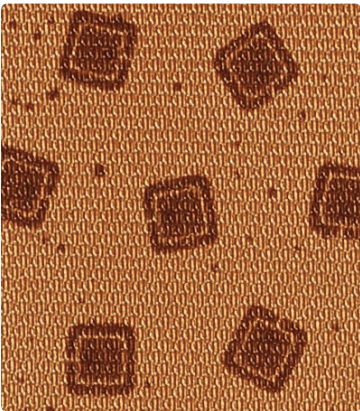
TRIBUTARY
TR-009 Copper



PINEHURST
PT-009 Copper



PRADO
PD-002 Maize



TOSS UP
TU-009 Copper



PRADO
PD-009 Terra Cotta



TRIBUTARY
TR-001 Flame



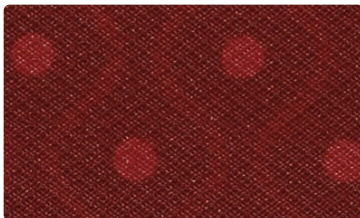
TUSSAH
TH-009 Spice



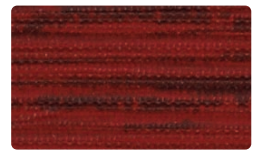
PINEHURST
PT-001 Ruby



TOSS UP
TU-001 Raspberry



PRADO
PD-001 Crimson



TUSSAH
TH-001 Pomegranate



DAKOTA
DK-002 Maize



DAKOTA
DK-019 Terra Cotta



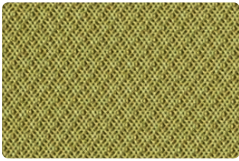
DAKOTA
DK-009 Tangerine



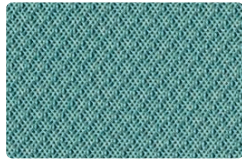
DAKOTA
DK-001 Tomato



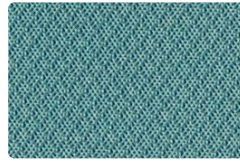
DAKOTA
DK-011 Scarlet



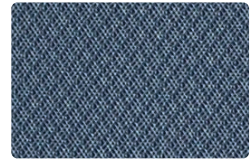
PEERLESS
PE-003 Palm



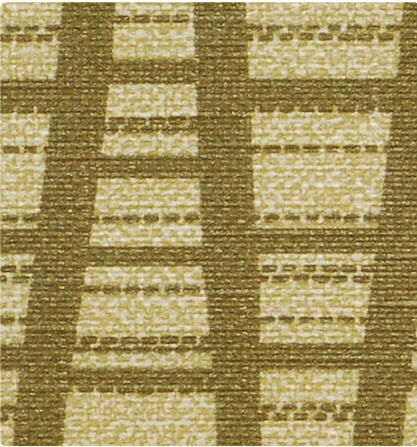
PEERLESS
PE-013 Turquoise



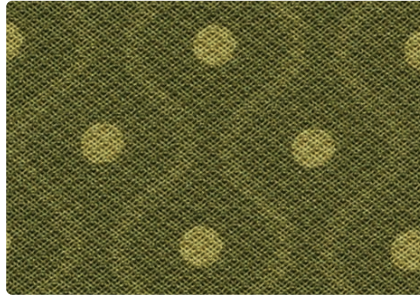
PEERLESS
PE-014 Cyan



PEERLESS
PE-004 Harbor



TRIBUTARY
TR-003 Palm



PRADO
PD-003 Basil



TOSS UP
TU-014 Aqua



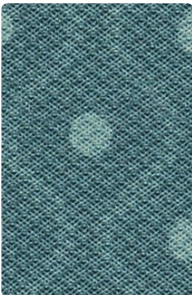
TUSSAH
TH-003 Feldspar



TOSS UP
TU-003 Jade



PINEHURST
PT-013 Aqua



PRADO
PD-014 Lagoon



TRIBUTARY
TR-013 Lagoon



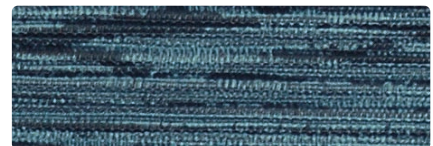
PRADO
PD-004 Denim



PINEHURST
PT-004 Atlantic



TOSS UP
TU-004 Cadet



TUSSAH
TH-004 Denim



DAKOTA
DK-033 Sulphur



DAKOTA
DK-003 Cilantro



DAKOTA
DK-034 Lagoon



DAKOTA
DK-024 Cyan



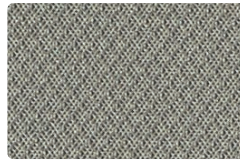
DAKOTA
DK-004 Indigo



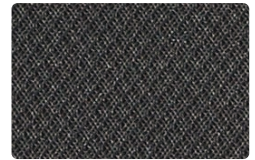
PEERLESS
PE-017 Ivory



PEERLESS
PE-007 Natural



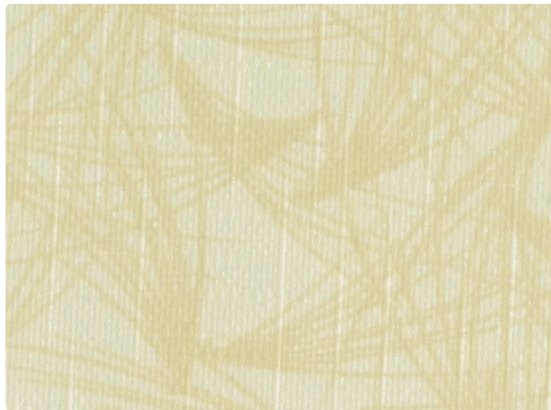
PEERLESS
PE-016 Pewter



PEERLESS
PE-006 Graphite



TUSSAH
TH-007 Parchment



PINEHURST
PT-007 Parchment



PRADO
PD-007 Alabaster



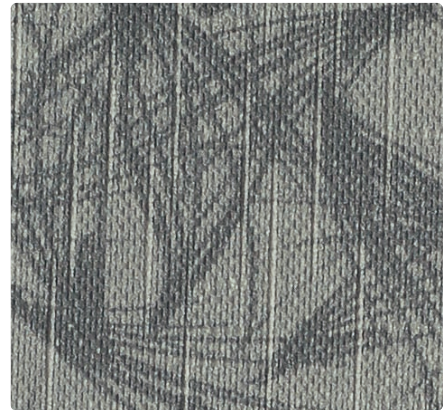
TOSS UP
TU-017 Alabaster



TRIBUTARY
TR-007 Sand



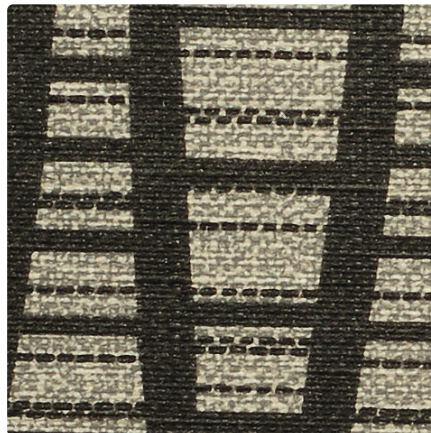
PRADO
PD-010 Latte



PINEHURST
PT-016 Slate



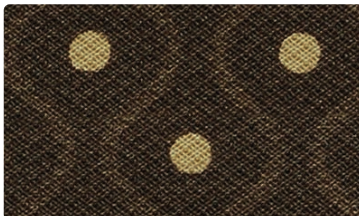
TUSSAH
TH-017 Beige



TRIBUTARY
TR-006 Cliff



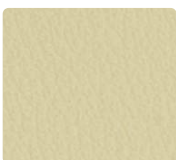
TOSS UP
TU-006 Thunder



PRADO
PD-000 Bark



TUSSAH
TH-006 Charcoal



DAKOTA
DK-007 Parchment



DAKOTA
DK-010 Mocha



DAKOTA
DK-000 Bark



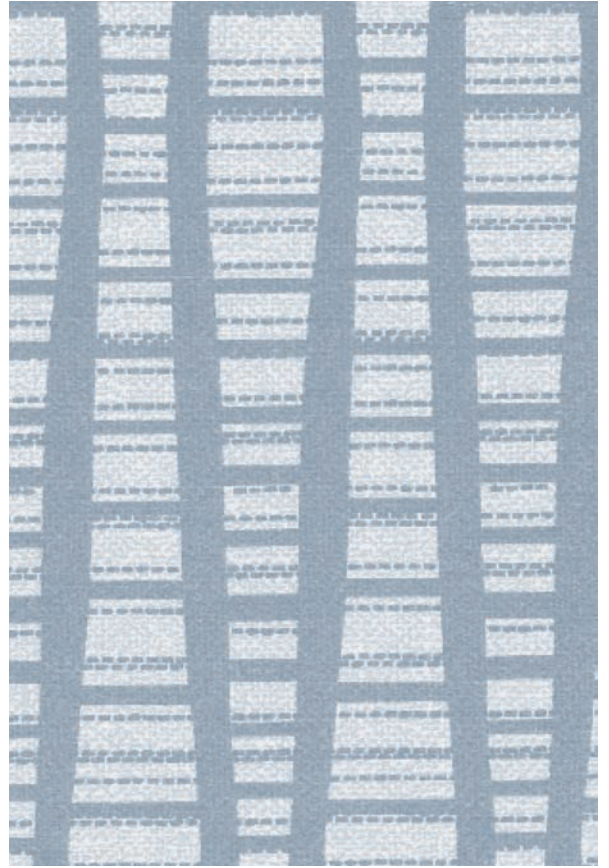
DAKOTA
DK-026 Pewter



DAKOTA
DK-006 Ebony





PINEHURST - Repeat: 4.88" H, 4.5" V



TRIBUTARY - Repeat: 1.88" H, 8.88" V

TECHNICAL INFORMATION

Vinyl I Coordinates

Pattern 54"	Content and Backing	Weight/ Linear Yd	Pattern Repeat	Finish	Abrasion Wyzenbeek  *	Light Fastness  *	Cleaning Code
DAKOTA FR	100% Vinyl Polyester Backing	32.25 oz.	None	PVC/Acrylic	Exceeds 500,000 Double Rubs	Exceeds 150 hours	W
PEERLESS FR <i>Directional</i>	100% Vinyl Polyester Backing	32.25 oz.	Non-Matching	PVC/Acrylic	Exceeds 500,000 Double Rubs	Exceeds 150 hours	W
PINEHURST FR <i>Directional</i>	100% Vinyl Polyester Backing	32.25 oz.	4.88" H 4.5" V	PVC/Acrylic	Exceeds 500,000 Double Rubs	Exceeds 150 hours	W
PRADO FR <i>Directional</i> <i>Shown Railroaded</i>	100% Vinyl Polyester Backing	32.25 oz.	1" H 1.13" V	PVC/Acrylic	Exceeds 500,000 Double Rubs	Exceeds 150 hours	W
TRIBUTARY FR <i>Directional</i> <i>Shown Railroaded</i>	100% Vinyl Polyester Backing	32.25 oz.	1.88" H 8.88" V	PVC/Acrylic	Exceeds 500,000 Double Rubs	Exceeds 150 hours	W
TOSS UP FR <i>Directional</i>	100% Vinyl Polyester Backing	32.25 oz.	2.75" H 3.13 V	PVC/Acrylic	Exceeds 500,000 Double Rubs	Exceeds 150 hours	W
TUSSAH FR <i>Directional</i> <i>Shown Railroaded</i>	100% Vinyl Polyester Backing	32.25 oz.	9.25" H 4.38 V Random Match	PVC/Acrylic	Exceeds 500,000 Double Rubs	Exceeds 150 hours	W

FLAMMABILITY

California Technical Bulletin 117, Section E (Equivalent to BIFMA)	Passes
NFPA 260 (Equivalent to UFAC) Class 1	Passes
FAA-FAR 25.853(a) & Appendix F Part 1 (a)(ii)	Passes
Federal Specifications CID A-A-2950	
(supercedes Federal Specification CCC-A-680A)	Passes
Fed. Spec. CCC-A-700J	Passes
Fed. Stnd. 191A Test Method 5903.1	Passes
FMVSS 302	Passes
New York & New Jersey Port Authority Code	Passes

May comply with California Technical Bulletin 133 when combined with appropriate components.

CARE AND CLEANING INFORMATION

W: Water-Based Cleaner – Spot clean, using the foam only for a water-based cleaning agent such as a mild detergent or non-solvent upholstery shampoo product. Apply foam with a soft brush in a circular motion. Pretest a small area before proceeding. Do not use alcohol based cleaners.

In general, most common stains can be easily cleaned using warm, soapy water and clear water rinses. Moderate scrubbing with a medium bristle brush will help loosen soiling materials from the depressions of embossed surfaces. For more stubborn stains, use the Fantastik®, Mr. Clean®, and Formula 409® commercially available mild detergents^ in accordance with the manufacturers instructions.

Full strength rubbing alcohol or mineral spirits^^ may be tried cautiously as a last resort on very stubborn stains, if the above suggestions do not work. Indiscriminate use of any solvent, or solvent containing cleaner, can severely damage or discolor vinyl.

Note: Detergents should never be used on a regular or repeated basis for normal cleaning. Mayer Fabrics recommends repeated rinsing with clear water after any cleaning procedure.

^When opening a new container, please test the cleaner in an inconspicuous area as cleaner manufactures may change formulas without notice.

^^Caution: Exercise care as these solvents are flammable. Use only small quantities of solvents and keep clear of any sources of ignition. Wear protective gloves and ensure cleaning takes place in a well ventilated area.

SPECIFIC TREATMENTS

Anti-Static Slip Finish Enhanced Bleach Resistance Mildew & Bacteria (Staph) Resistant Oil Resistant Sulfide Stain Resistant Urine Stain Resistant

ADDITIONAL INFORMATION

For information or assistance with products or services, call us at 800.428.4415 or refer to our web site, www.mayerfabrics.com.

Custom Capabilities: All patterns can be custom colored. Minimum yardage applies.

Memo Samples: Please keep this card intact. Individual memo samples are available. Please contact Mayer Fabrics or refer to the Mayer Fabrics web site.

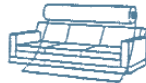
Color matching: Mayer Fabrics always attempts to ship a satisfactory commercial match. Because of industry standard dye lot variation, colors may not match exactly.

Specifications: Specifications are correct at the time of printing. Current specifications are available on our web site.

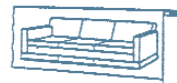
*ACT® Registered Certification Marks

MorCare™
NOW MORE THAN EVER

Railroaded: This feature allows reduction of seams and enables smoother furniture tailoring.



Fabric "up the roll" or "regular" position



Fabric "railroaded" or "top selvage" position

All railroaded patterns should be upholstered as shown on card.



MAYER FABRICS

GSA Contract #GS-28F-0022P

† 317.267.2626 or 800.428.4415 ‡ 317.267.2629 or 877.7SAMPLE

www.mayerfabrics.com

©2008 Mayer-Paetz, Inc.

VICID  51108