

REBOUND WOVEN CRYPTON **GREEN PLUS** COORDINATES



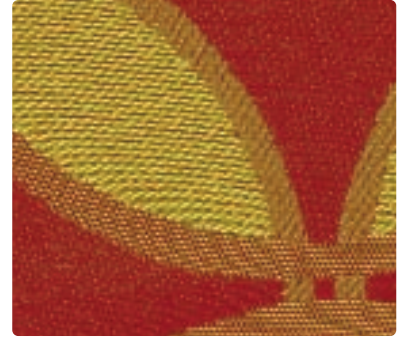
MAYERFABRICS



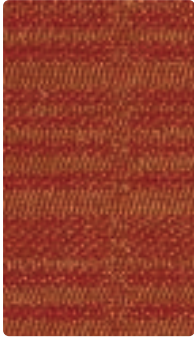
REPLAY
WC790-009 Terra Cotta



REBOUND
WC791-001 Persimmon



REALM
WC793-001 Poppy



RATIO
WC792-009 Persimmon



REPLAY
WC790-001 Chili



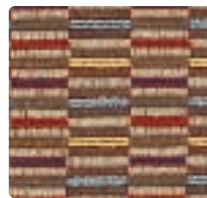
REALM
WC793-009 Russet



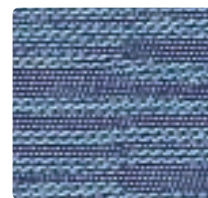
REALM
WC793-004 Aegean



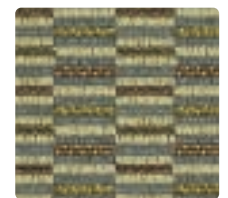
RATIO
WC792-001 Cinnabar



REPLAY
WC790-017 Beachcomber



RATIO
WC792-024 Aegean



REPLAY
WC790-014 Lagoon



PHOENIX
PH-022 Butterscotch



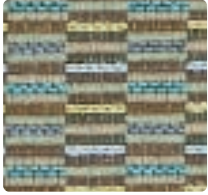
PHOENIX
PH-009 Terra Cotta



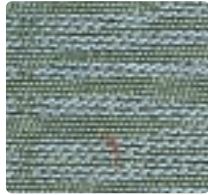
PHOENIX
PH-019 Chili



PHOENIX
PH-034 Marina



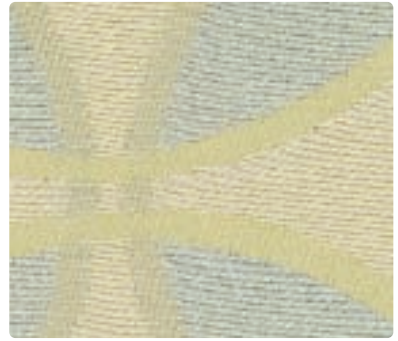
REPLAY
WC790-013 Turquoise



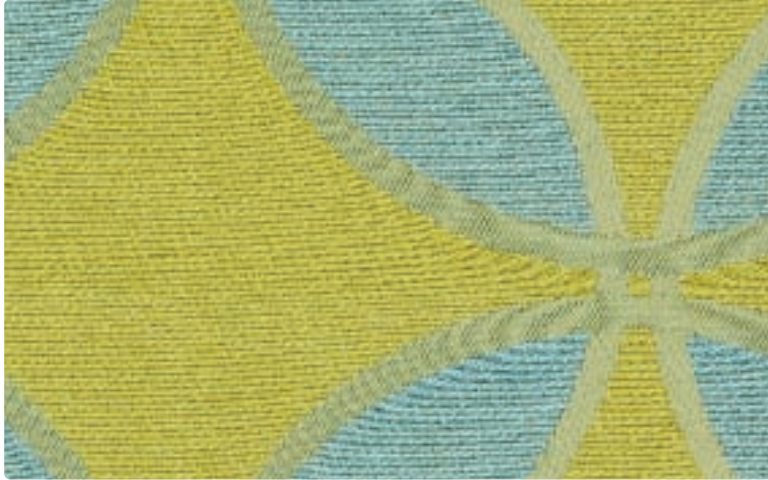
RATIO
WC792-014 Aqua



REPLAY
WC790-023 Oasis



REALM
WC793-014 Mist



REALM
WC793-003 Key Lime



REBOUND
WC791-014 Turquoise



REPLAY
WC790-004 Cobalt



RATIO
WC792-013 Jade



REALM
WC793-013 Jade



REBOUND
WC791-004 Indigo



RATIO
WC792-004 Indigo



PHOENIX
PH-002 Wheat



PHOENIX
PH-003 Palm



PHOENIX
PH-023 Mallard



PHOENIX
PH-004 Admiral



RATIO
WC792-007 Chamois



REALM
WC793-007 Bronze



REPLAY
WC790-007 Mushroom



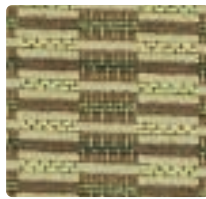
RATIO
WC792-003 Palm



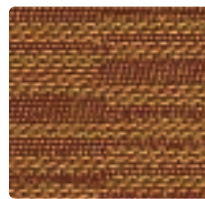
REBOUND
WC791-009 Caramel



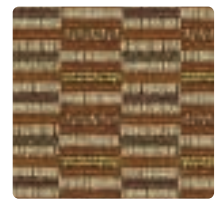
REBOUND
WC791-003 Wasabi



REPLAY
WC790-003 Palm



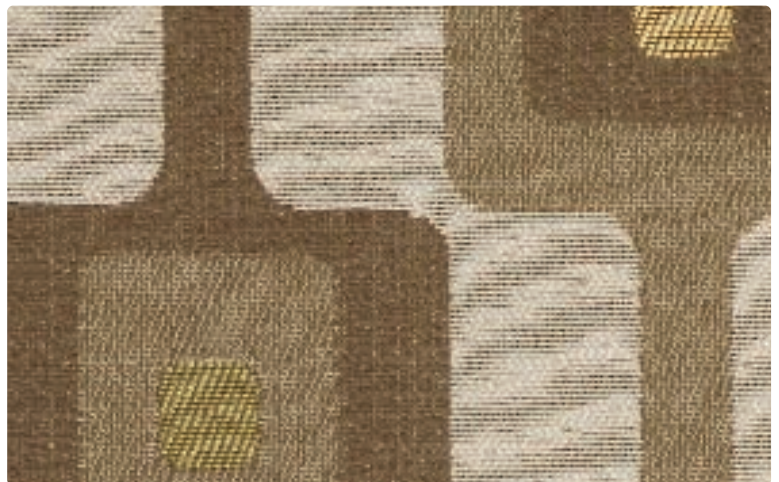
RATIO
WC792-019 Terra Cotta



REPLAY
WC790-000 Caramel



REPLAY
WC790-006 Granite



REBOUND
WC791-000 Truffle



PHOENIX
PH-017 Buckskin



PHOENIX
PH-027 Saddle



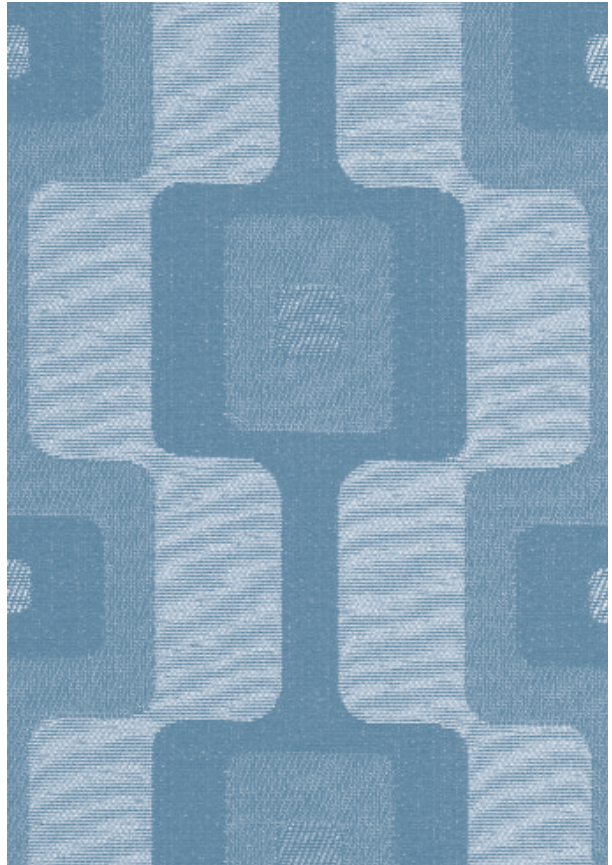
PHOENIX
PH-010 Mocha



PHOENIX
PH-006 Lava



REALM - Repeat: 7" H, 7" V



REBOUND - Repeat: 5" H, 8.5" V

10 Things You Should Know About Crypton Green

Crypton Green is a third-party-certified, high-performance upholstery fabric with a reduced environmental impact and all the performance characteristics of Crypton Super Fabrics.

- 01. Gold Indoor Advantage™** - certified by Scientific Certification Systems
 - » Passes third-party emissions testing
 - » Documented and audited quality system
- 02. Optimized raw materials** using third-party assessment: **Silver Cradle-to-Cradle™ certified by MBDC***
 - » Materials assessed for human and environmental health
 - » Reformulated chemistry using environmentally preferable materials
 - » Adopted strategy for renewable energy credits and water stewardship
- 03. Contributes to points for LEED-CI and the *Green Guide for Health Care*.** Opportunities include:
 - » Credits 1.2 and 1.3, Building Reuse
 - » Credits 4.1 and 4.2, Recycled Content
 - » Credit 4.5, Low-Emitting Materials, Systems Furniture, and Seating
- 04. Maintains all of Crypton's performance features,** extending the useful life of furniture
- 05. Reduced or eliminated** formaldehyde, PFOAs, and PBDEs
- 06. Complies to the Collaborative for High-Performance Schools' Section 01350-Special Environmental Requirements**
- 07. Complies to BIFMA X7** (Standard for Formaldehyde and TVOC Emissions of Low-Emitting Office Furniture Systems and Seating)
- 08. Surpasses Greenguard's Indoor Air Quality requirements**
- 09. Includes sustainable, recyclable fibers.** Options include:
 - » 100% recycled polyester
 - » Heavy metal-free polyester
- 10. While Crypton Green is a significant advancement, our journey will never end. Crypton is committed to a leadership role in the use of green materials, processes, and practices**

* MBDC is an approved assessor of Crypton Green chemistry. Other assessors and additional forms of raw material evaluations are under consideration.

TECHNICAL INFORMATION

Rebound Woven Crypton Green Plus Coordinates

Pattern 54"	Content and Backing	Weight/ Linear Yd	Pattern Repeat	Finish	Abrasion Wyzenbeek ^{A*}	Light Fastness [*]	Flammability ^{☿*}	Cleaning Code
PHOENIX	100% Urethane - PVC Free Brushed Woven Rayon Backing	19.5 oz.	None	Polyurethane	Exceeds 1,002,000 Double Rubs	Exceeds 40 hours	Cal. 117-E (Equiv. to BIFMA) NFPA 260 (Equiv. to UFAC) MVSS-302	WS
RATIO <i>Directional</i>	(T) 100% P. I. Recycled Polyester Crypton® Green backing	17.3 oz.	3.38" H 3.38" V	Crypton® Green	Exceeds 100,000 Double Rubs	Exceeds 60 hours	Cal. 117-E (Equiv. to BIFMA) NFPA 260 (Equiv. to UFAC)	C
REALM <i>Directional</i>	(T) 100% P. I. Recycled Polyester Crypton® Green backing	16.5 oz.	7" H 7" V	Crypton® Green	Exceeds 50,000 Double Rubs	Exceeds 60 hours	Cal. 117-E (Equiv. to BIFMA) NFPA 260 (Equiv. to UFAC)	C
REBOUND <i>Directional</i>	81% P. I. Recycled Polyester 19% P. C. Polyester Crypton® Green backing	14.4 oz.	5" H 8.5" V	Crypton® Green	Exceeds 50,000 Double Rubs	Exceeds 40 hours	Cal. 117-E (Equiv. to BIFMA) NFPA 260 (Equiv. to UFAC)	C
REPLAY <i>Directional</i>	81% P. I. Recycled Polyester 19% P. C. Polyester Crypton® Green backing	15.2 oz.	.625" H .5" V	Crypton® Green	Exceeds 50,000 Double Rubs	Exceeds 40 hours	Cal. 117-E (Equiv. to BIFMA) NFPA 260 (Equiv. to UFAC)	C

P.I. = Post Industrial, P.C. = Post Consumer

May comply with California Technical Bulletin 133 when combined with appropriate components.

CRYPTON CLEANING INFORMATION

C: Crypton Cleaning – Generally stains are removed with plain water and powdered enzyme detergent. Upholstery foam shampoo, water-based cleaning products and germicidal detergents can be used. Be sure to remove all residue from cleaning products with clean water. Do not use solvent-based cleaners or dry cleaning products. For best cleaning solutions, use CRYPTON UPHOLSTERY CLEANER. Contact Mayer Fabrics.

PHOENIX CLEANING INFORMATION

WS: Water/Solvent Cleaner – Spot clean, with a mild solvent, an upholstery shampoo, or the foam from a mild detergent. When using a solvent or dry cleaning product, follow instructions carefully and clean only in a well-ventilated room. Avoid any product that contains carbon tetrachloride or other toxic materials. With either method, pretest a small area before proceeding.

Day-to-day soil – Remove ordinary dirt and smudges with a mild soap and warm water solution. Dry with a soft, lint-free cloth or towel. For more difficult stains, use a stronger detergent; however, follow the detergent manufacturer's instructions closely.

More difficult stains – Use nonabrasive household cleaners such as Formula 409® All-Purpose Spray Cleaner or Fantastik® Spray Cleaner with water and a soft cloth. A mild solvent-type cleaner such as rubbing alcohol (isopropyl/alcohol) may also be used. Apply moderately with a soft cloth. Dry area with another cloth, rinse with water and dry.

CRYPTON BACTERIAL RESISTANCE

Excellent anti-bacterial properties as evidenced by 4 and 5 millimeter-wide growth-free zones produced against the staphylococcus aureus test organism. Crypton resists fungal growth, test AATCC 30-1998, AATCC 6275.

Crypton resists bacterial growth, test AATCC 147-1998, AATCC 6538

EPA Approved - When Crypton's Disinfectant and Deodorizer is used on Crypton Super Fabric, you have a disinfected fabric system. Crypton is the first and only fabric approved by the EPA proven to be disinfected.

CRYPTON ECO SYSTEM INFORMATION

All Crypton products are environmentally preferable. Crypton is produced in a world-class manufacturing operation. Crypton is committed to green and has incorporated Crypton's optimized green formulation in all Crypton upholstery, meaning a greener Crypton.

PHOENIX ECO SYSTEM INFORMATION

Chlorine, bromine, or phthalate ester plasticizer materials were not used in the manufacturing of Phoenix.

Many of the materials used in the manufacturing of Phoenix may contain very low VOC content. Phoenix is protected by a top-finish coating that contains organic solvents. The organic solvents (VOC's) portion of the top-finish are removed during the manufacturing process. The final product contains only trace levels of VOC's. The material may meet Chair/Cushion VOC requirements.

CUSTOM CAPABILITIES

Patterns in the Mayer line can be custom colored. Please contact Mayer Fabrics for more information.

Please keep this card intact. Individual memo samples are available. Please contact Mayer Fabrics or refer to the Mayer Fabrics web site.

Additional colors are available. Please contact Mayer Fabrics for more information.

Color matching: Mayer Fabrics will always attempt to ship a satisfactory commercial match. Because of industry standard dye lot variation, colors may not match exactly. Specifications are correct at the time of printing. Current specifications are available on the Mayer Fabrics web site. www.mayerfabrics.com

* ACT® Registered Certification Marks

 (T) Terratec is a registered trademark of True Textiles Inc, and designates fabrics that are made from 100% recycled or compostable materials using increasingly sustainable manufacturing practices to produce a high quality product that is recyclable at the end of its useful life.

 100% of the electricity used to make Ratio and Realm are matched by GREEN-E certified Renewable Energy Certificate (www.green-e.org)



GSA Contract #GS-28F-0022P

MAYERFABRICS

☎ 317.267.2626 or 800.428.4415 ☎ 317.267.2629 or 877.7SAMPLE

www.mayerfabrics.com

©2008 Mayer-Paetz, Inc.

RWCGPCCD  50808