

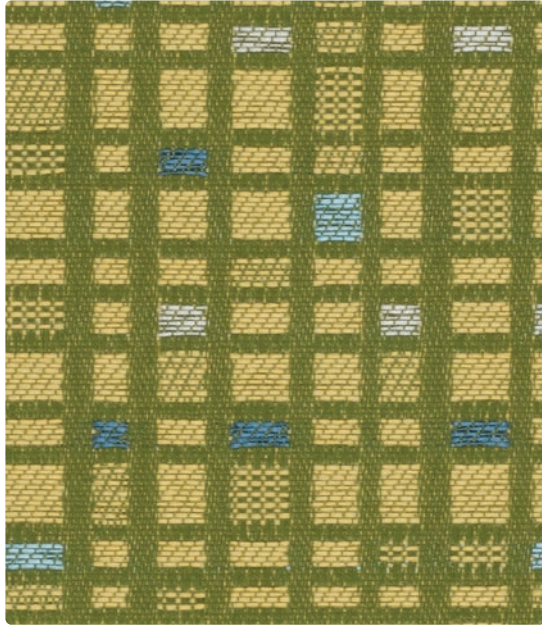
# PROXIMITY CRYPTON PLUS III COORDINATES

---

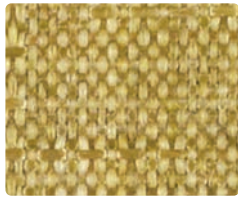
Featuring Silver Ion Technology



# Featuring Silver Ion Technology



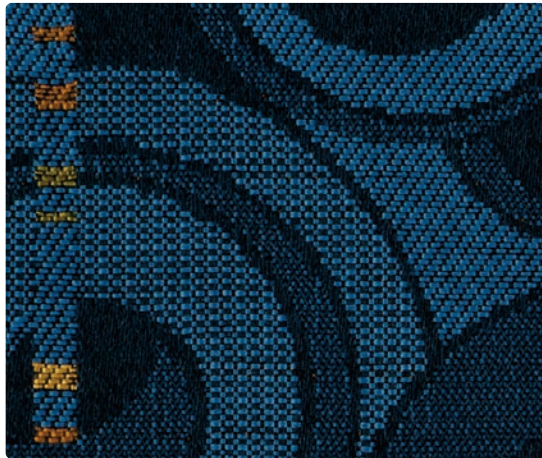
**SOCIAL NETWORK**  
WC960-003 Springtime



**PASTIME**  
WC959-003 Celadon



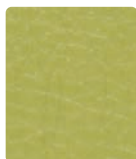
**PRIMO**  
WC954-013 Garden



**DISCO**  
WC957-004 Danube



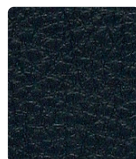
**JOURNEY**  
WC952-004 Danube



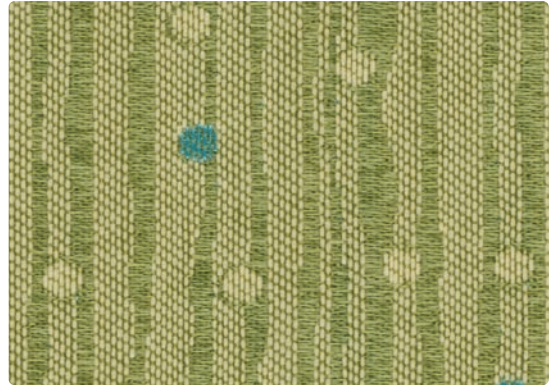
**CARESSA**  
CA-083 Wasabi



**CARESSA**  
CA-064 Cerulean



**CARESSA**  
CA-014 Admiral



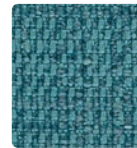
**RAIN DANCE**  
W956-003 Aloe



**HABITAT**  
WC958-004 Indigo



**ACCLAIM**  
WC751-003 Basil



**ACCLAIM**  
WC751-014 Calypso



**ACCLAIM**  
WC751-004 Indigo



**PASTIME**  
WC959-014 Vapor



**PRIMO**  
WC954-014 Sky



**JITTERBUG**  
WC953-014 Delta



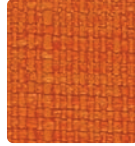
**ARABESQUE**  
WC950-009 Tangerine



**ARISTOCRAT**  
WC951-002 Gilt



**PRIMO**  
WC954-009 Persimmon



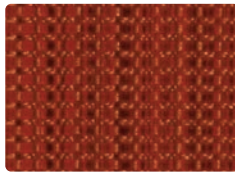
**ACCLAIM**  
WC751-009 Orange Peel



**ACCLAIM**  
WC751-001 Cardinal



**ACCLAIM**  
WC751-005 Purple Haze



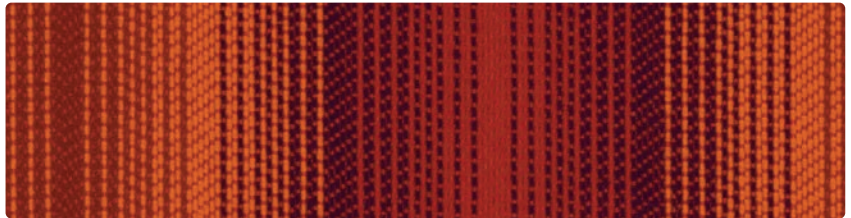
**STANZA**  
WC737-001 Paprika



**PRIMO**  
WC954-001 Cinnabar



**ARISTOCRAT**  
WC951-001 Tango



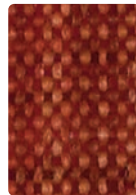
**JOURNEY**  
WC952-009 Flame



**PASTIME**  
WC959-002 Honey



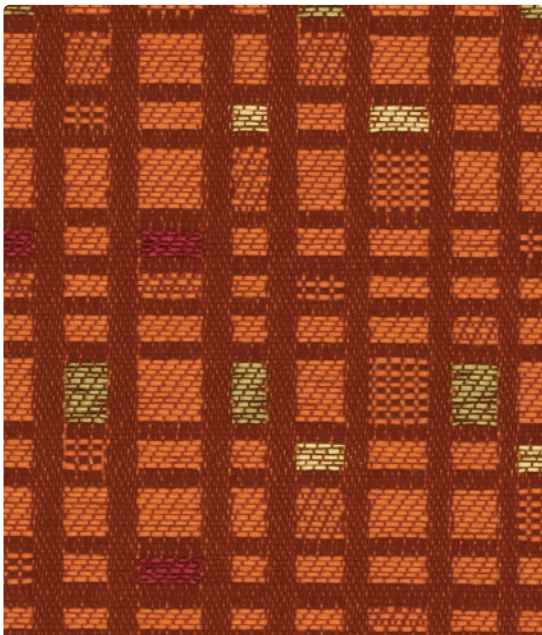
**PASTIME**  
WC959-009 Apricot



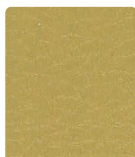
**PASTIME**  
WC959-001 Persimmon



**CELTIC**  
WC955-001 Merlot



**SOCIAL NETWORK**  
WC960-009 Flame



**CARESSA**  
CA-002 Butterscotch



**CARESSA**  
CA-051 Paprika



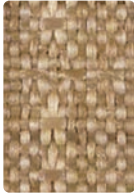
**CARESSA**  
CA-005 Aubergine



**HABITAT**  
WC958-017 Taupe



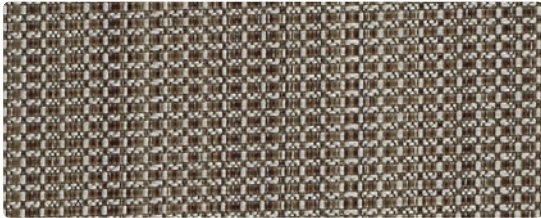
**PASTIME**  
WC959-017 Raffia



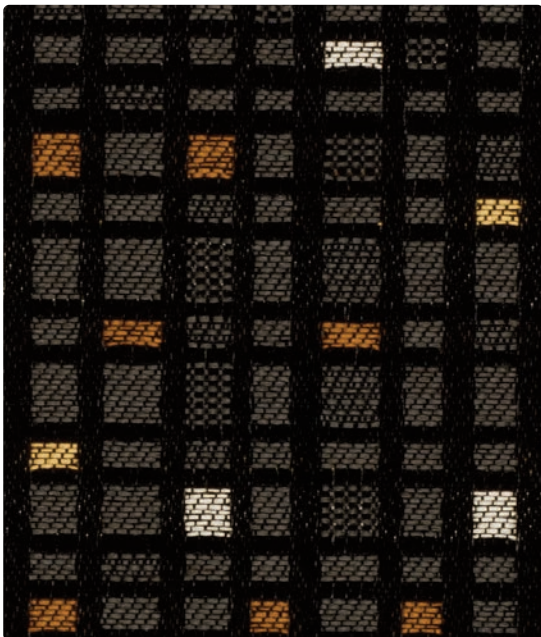
**PASTIME**  
WC959-010 Mushroom



**PASTIME**  
WC959-006 Graphite



**STANZA**  
WC737-006 Charcoal



**SOCIAL NETWORK**  
WC960-006 Lava



**PASTIME**  
WC959-007 Linen



**PRIMO**  
WC954-017 Flax



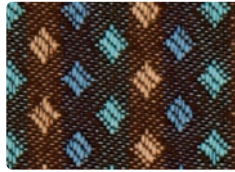
**ACCLAIM**  
WC751-017 Toast



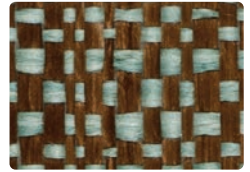
**ACCLAIM**  
WC751-016 Greige



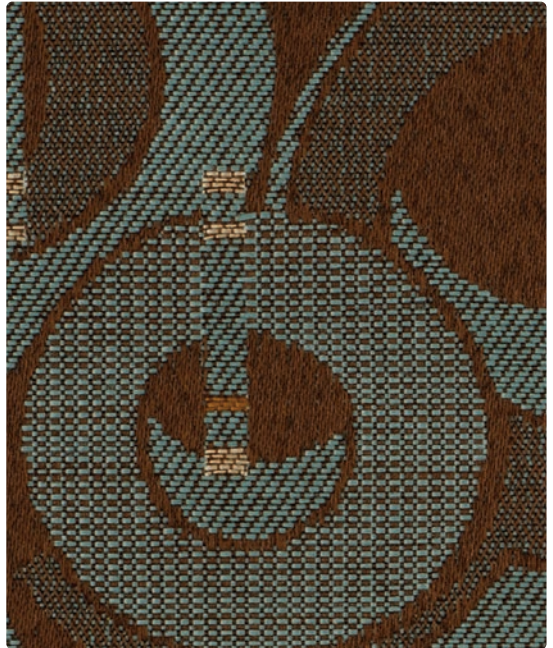
**ACCLAIM**  
WC751-006 Ebony



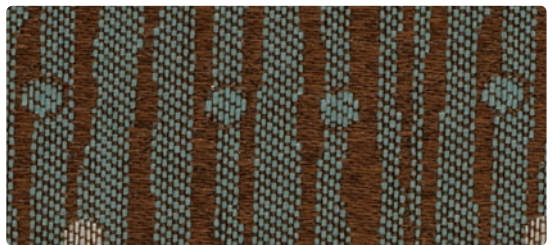
**ARISTOCRAT**  
WC951-000 Zenith



**PRIMO**  
WC954-000 Glacier



**DISCO**  
WC957-014 Mineral



**RAIN DANCE**  
WC956-014 Zenith



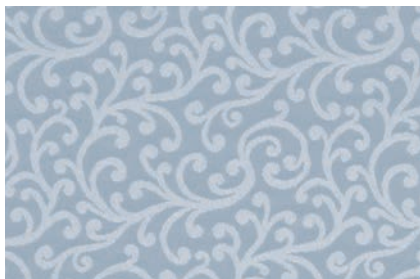
**CARESSA**  
CA-027 Buff



**CARESSA**  
CA-040 Java



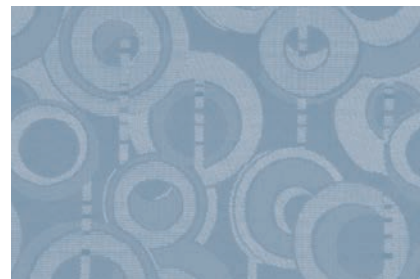
**CARESSA**  
CA-006 Black



ARABESQUE - Repeat: 7" H, 7" V



CELTIC - Repeat: 3.375" H, 3.375" V



DISCO - Repeat: 9.375" H, 8.75" V



JITTERBUG - Repeat: 2.375" H, 5" V



JOURNEY - Repeat: 4.5" H, 0" V

**FLAMMABILITY - CARESSA FR**

California Technical Bulletin 117-2013	Passes	Boston Fire Dept. Code (BFD 1X-1)	Passes
NFPA 260 (Equivalent to UFAC) Class 1	Passes	FMVSS 302	Passes
ASTM E84 (Adhered) Class 1 or A	Passes	IMO A.652(16) 8.2 & 8.3	Passes
BIFMA	Passes	NY & NJ Port Authority	Passes

**CARESSA FR SPECIFIC TREATMENTS**

Stain Resistant with Resilience<sup>SR</sup>   Abrasion Resistant   Anti-Bacterial   Anti-Microbial   Sulfide Stain Resistant   Mildew Resistant   Bleach Cleanable



Resilience<sup>SR</sup> represents the latest technology in Faux Leather and Vinyl Protection, enhancing performance where it is needed the most.

**Stain Resistance:** With proper care, materials treated with Resilience<sup>SR</sup> can be easily cleaned and will guard against stains maintaining the desired surface appearance for years to come.

**Anti-Microbial & Anti-Bacterial Protection:** Products treated with Resilience<sup>SR</sup> are engineered to inhibit bacterial growth, as well as fungus, mold and mildew spores, resulting in a more hygienic environment.

**Abrasion Resistance:** Resilience<sup>SR</sup> provides additional wear properties and surface durability to any vinyl or faux leather, thereby increasing the life of the material.

Resilience<sup>SR</sup> is not visible, and does not affect the hand of the material. Resilience<sup>SR</sup> is engineered to last, even after repeated cleaning and wear. Specify Resilience<sup>SR</sup> for the most demanding healthcare and hospitality applications.

Resilience<sup>SR</sup> complies with ASTM G-21/CFFA 120 and AATCC 147/CFFA 300 inhibiting the growth of the following organisms:

Aspergillus Niger   Penicillium Pinaphilum   Chaetomium Globosum   Trichoderma Virens   Aureobasidium Pullulans   Staphylococcus Aureus  
 Klebsiella Pneumoniae   Salmonella Choleraesuis   Pseudomonas Aeruginosa

**CARESSA FR STAIN RESISTANCE**

Stain Resistance per CFPA 141 (Determines the resistance of a fabric to staining when subjected to common house-hold stains and cleaning agents) - Class 5 (Excellent) rating:

Butter	Blood	Coffee	Hair Spray	Iodine/Betadine	Ketchup	Lipstick	Liquid Foundation	Mascara
Mayonnaise	Motor Oil	Salad Dressing	Soda	Soy Sauce	Suntan Lotion	Tea	Urine	Whiskey

**CARESSA FR STAIN RESISTANCE**

Stain Resistance per CFPA 141 (Determines the resistance of a fabric to staining when subjected to common house-hold stains and cleaning agents) - Class 5 (Excellent) rating:

Butter	Blood	Coffee	Hair Spray	Iodine/Betadine	Ketchup	Lipstick	Liquid Foundation	Mascara
Mayonnaise	Motor Oil	Salad Dressing	Soda	Soy Sauce	Suntan Lotion	Tea	Urine	Whiskey

**CRYPTON STAIN RESISTANCE**

Stain Resistance is based on a numerical scale with 5 being the highest for stain removal.

	After 5 min./After 24 hrs.		After 5 min./After 24 hrs.
Blood	Class 4-5/Class 4-5	Urine	Class 4-5/Class 4-5
Iodine	Class 4-5/Class 4-5	Suntan Lotion	Class 4-5/Class 4-5
Ketchup	Class 4-5/Class 4-5	Black Coffee	Class 4-5/Class 4-5
Milk	Class 4-5/Class 4-5	Cola	Class 4-5/Class 4-5

**BACTERIAL AND FUNGUS/MILDEW RESISTANCE**

Non leaching Silver Ion Technology microbial protection.

Excellent anti-bacterial and anti-fungal properties as evidenced by the following methods: 4 and 5 millimeter-wide growth-free zones produced against the staphylococcus aureus test organism.

Crypton resists fungal growth, test AATCC 30-2004, Aspergillus niger (ATCC #6275).

Crypton resists bacterial growth, test ISO 20743:2007(E), Klebsiella pneumoniae (ATCC #4352)

EPA Approved – When Crypton’s Disinfectant and Deodorizer is used on Crypton Super Fabric, you have a disinfected fabric system. Crypton is the first and only fabric approved by the EPA proven to be disinfected. Crypton’s Disinfectant and Deodorizer will kill MRSA, VRSA, IV, E. Coli, hepatitis and many more bacteria and viruses

**CARESSA FR CARE AND CLEANING INFORMATION**

WS: Water/Solvent Cleaner - Spot clean, with a mild solvent, and upholstery shampoo, or the foam from a mild detergent. When using a solvent or dry cleaning product, follow instructions carefully and clean only in a well-ventilated room. Avoid any product that contains carbon tetrachloride or other toxic materials. With either method, pretest a small area before proceeding.

**BC: Bleach Cleanable** - 1 part bleach, 9 parts water = 10% bleach, 90% water solution. Do not clean/disinfect fabric for longer than 10 minutes using the 10% bleach solution. Always rinse promptly with clean water after applying the bleach solution. Failure to do so will void any and all warranties.

**CRYPTON CARE AND CLEANING INFORMATION**




C: Crypton® Cleaning – Crypton fabrics are available in various fiber types, and all Crypton fabrics can be cleaned with soap and water. For the best cleaning solution, use CRYPTON UPHOLSTERY CLEANER, available from Mayer Fabrics.

**For additional care and cleaning information on Caressa and Crypton patterns, please refer to Mayer Fabrics website.**

# TECHNICAL INFORMATION

## Proximity Crypton Plus III Coordinates

\*Certification Marks Owned by ACT.

Pattern 54"	Content and Backing	GREENGUARD Certified	Weight/ Linear Yd	Pattern Repeat	Finish	Abrasion  Wyzenbeek*	Light  Fastness*	Flammability  *	Cleaning Code
ACCLAIM <i>Directional</i>	60% Post-Consumer Recycled Polyester, 40% Polyester Backing: Crypton® Green	Gold Certified	30.67 oz.	Non-Matching	Crypton® Green with Antimicrobial Silver Ion Technology	305,000 Double Rubs	40 hours	Cal. 117-2013 NFPA 260 (Equiv. to UFAC)	C, BC
ARABESQUE <i>Directional</i>	100% Polyester Backing: Crypton®	Gold Certified	14.75 oz.	7" H 7" V	Crypton® with Antimicrobial Silver Ion Technology	70,000 Double Rubs	40 hours	Cal. 117-2013 NFPA 260 (Equiv. to UFAC)	C, BC
ARISTOCRAT <i>Directional Railroaded</i>	100% Polyester Backing: Crypton®	Gold Certified	12.19 oz.	1" H .375" V	Crypton® with Antimicrobial Silver Ion Technology	80,000 Double Rubs	40 hours	Cal. 117-2013 NFPA 260 (Equiv. to UFAC)	C, BC
CARESSA FR	100% Vinyl Backing: 100% Polyester	Certified	29 oz.	None	Resilience <sup>SR</sup>	650,000 Double Rubs	1000 hours	See chart under grayscales	WS, BC
CELTIC <i>Directional</i>	100% Polyester Backing: Crypton®	Gold Certified	13.45 oz.	3.375" H 3.375" V	Crypton® with Antimicrobial Silver Ion Technology	70,000 Double Rubs	40 hours	Cal. 117-2013 NFPA 260 (Equiv. to UFAC)	C, BC
DISCO <i>Directional</i>	100% Polyester Backing: Crypton®	Gold Certified	14.85 oz.	9.375" H 8.75" V	Crypton® with Antimicrobial Silver Ion Technology	85,000 Double Rubs	40 hours	Cal. 117-2013 NFPA 260 (Equiv. to UFAC)	C, BC
HABITAT <i>Directional</i>	100% Polyester Backing: Crypton®	Gold Certified	14.4 oz.	3.5" H 7" V	Crypton® with Antimicrobial Silver Ion Technology	75,000 Double Rubs	40 hours	Cal. 117-2013 NFPA 260 (Equiv. to UFAC)	C, BC
JITTERBUG <i>Directional</i>	100% Polyester Backing: Crypton®	Gold Certified	14.75 oz.	2.375" H 5" V	Crypton® with Antimicrobial Silver Ion Technology	70,000 Double Rubs	40 hours	Cal. 117-2013 NFPA 260 (Equiv. to UFAC)	C, BC
JOURNEY <i>Directional Railroaded</i>	100% Polyester Backing: Crypton®	Gold Certified	14.41 oz.	4.5" H 0" V	Crypton® with Antimicrobial Silver Ion Technology	100,000 Double Rubs	40 hours	Cal. 117-2013 NFPA 260 (Equiv. to UFAC)	C, BC
PASTIME <i>Directional</i>	100% Polyester Backing: Crypton®	Gold Certified	20.11 oz.	10" H Random Match V	Crypton® with Antimicrobial Silver Ion Technology	70,000 Double Rubs	40 hours	Cal. 117-2013 NFPA 260 (Equiv. to UFAC)	C, BC
PRIMO <i>Directional</i>	100% Polyester Backing: Crypton®	Gold Certified	22.65 oz.	.75" H 1" V Random Match	Crypton® with Antimicrobial Silver Ion Technology	70,000 Double Rubs	40 hours	Cal. 117-2013 NFPA 260 (Equiv. to UFAC)	C, BC
RAIN DANCE <i>Directional Railroaded</i>	100% Polyester Backing: Crypton®	Gold Certified	15.21 oz.	2.375" H 4.75" V	Crypton® with Antimicrobial Silver Ion Technology	70,000 Double Rubs	40 hours	Cal. 117-2013 NFPA 260 (Equiv. to UFAC)	C, BC
SOCIAL NETWORK <i>Directional</i>	100% Polyester Backing: Crypton®	Gold Certified	15.29 oz.	3.5" H 6" V	Crypton® with Antimicrobial Silver Ion Technology	70,000 Double Rubs	40 hours	Cal. 117-2013 NFPA 260 (Equiv. to UFAC)	C, BC
STANZA <i>Directional</i>	100% Polyester Backing: Crypton®	Gold Certified	26.23 oz.	3.75" H 0" V	Crypton® with Antimicrobial Silver Ion Technology	50,000 Double Rubs	40 hours	Cal. 117-2013 NFPA 260 (Equiv. to UFAC)	C, BC

All patterns may comply with California Technical Bulletin 133 when combined with appropriate components.

### REDUCED ENVIRONMENTAL IMPACT

GREENGUARD Certified and GREENGUARD Gold Certified products are tested for low chemical emissions to standard UL 2818. For more information, visit [UL.com/gg](http://UL.com/gg).

All Crypton products are environmentally preferable. Crypton is produced in a world-class manufacturing operation. Crypton is committed to green and has incorporated Crypton's optimized green formulation in all Crypton upholstery, meaning a greener Crypton.

### ACCLAIM

Recycled Content



### ADDITIONAL INFORMATION

Additional colors are available. Please refer to the Mayer Fabrics website or contact customer service.

**Custom Capabilities:** All patterns can be custom colored. Minimum yardage applies.

**Memo Samples:** Please keep this card intact. Individual memo samples can be ordered on our website or by contacting customer service.

**Fabric Color Matching:** Mayer Fabrics always attempts to ship a satisfactory commercial match. Because of industry standard dye lot variation, colors may not match exactly.

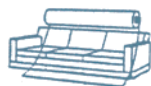
**Digital Swatch Card Color Matching:** Due to color variations on different monitors and color printers, actual swatch colors may vary slightly. Please request a memo sample from Mayer Fabrics to ensure proper color representation.

**Specifications:** Specifications are correct at the time of printing. Additional specifications are available on our website.

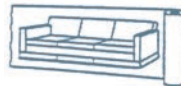
For information or assistance with products or services, call us at 800.428.4415 or refer to our website, [www.mayerfabrics.com](http://www.mayerfabrics.com).



Railroaded: This feature allows reduction of seams and enables smoother furniture tailoring.



Fabric "up the roll" or "regular" position



Fabric "railroaded" or "top selvage" position

We recommend all railroaded patterns should be upholstered as shown on card.



MAYERFABRICS

GSA Contract #GS-28F-0022P

T 317.267.2626 or 800.428.4415 F 317.267.2629 or 877.7SAMPLE

[www.mayerfabrics.com](http://www.mayerfabrics.com)

©2014 Mayer-Paetz, Inc.

PCP3CCD



51114