

PROXIMITY CRYPTON PLUS II COORDINATES



Featuring Silver Ion Technology



ARABESQUE
WC950-009 Tangerine



HABITAT
WC958-002 Sunshine



CELTIC
WC955-009 Cayenne



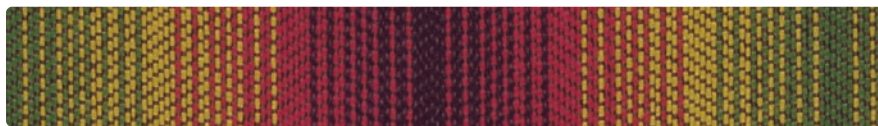
JOURNEY
WC952-009 Flame



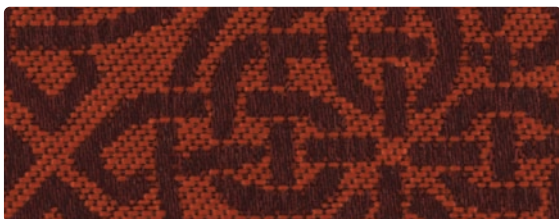
ARISTOCRAT
WC951-001 Tango



ARISTOCRAT
WC951-008 Jewel



JOURNEY
WC952-001 Carnival



CELTIC
WC955-001 Merlot



ARABESQUE
WC950-001 Brick



HABITAT
WC958-008 Magenta



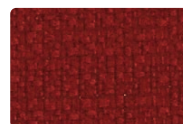
FINALE
WC777-029 Saffron



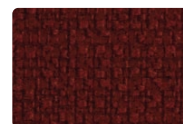
FINALE
WC777-009 Paprika



FINALE
WC777-019 Chili



FINALE
WC777-001 Crimson



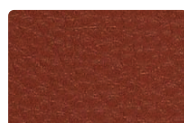
FINALE
WC777-011 Port



CARESSA
CA-019 Bittersweet



CARESSA
CA-051 Paprika



CARESSA
CA-031 Brick



CARESSA
CA-001 Ruby



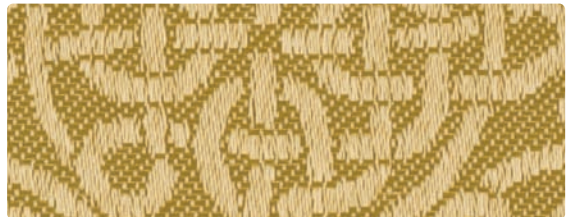
CARESSA
CA-041 Burgundy



ARABESQUE
WC950-003 Citronella



HABITAT
WC958-003 Herb



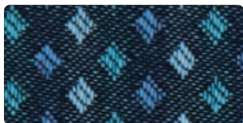
CELTIC
WC955-003 Citronella



JOURNEY
WC952-003 Springtime



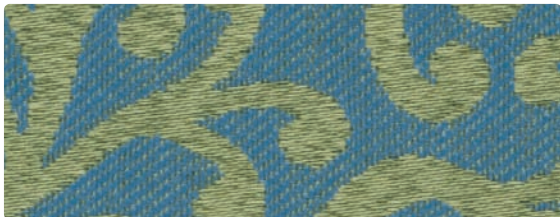
ARISTOCRAT
WC951-003 Grassland



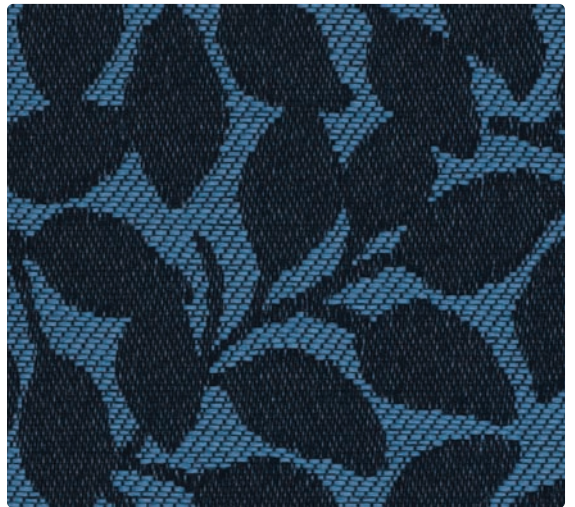
ARISTOCRAT
WC951-004 Nautica



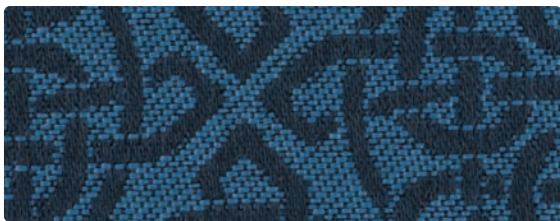
JOURNEY
WC952-004 Danube



ARABESQUE
WC950-014 Aquamarine



HABITAT
WC958-004 Indigo



CELTIC
WC955-004 Blueberry



FINALE
WC777-023 Citrus



FINALE
WC777-013 Wasabi



FINALE
WC777-043 Juniper



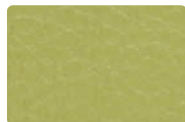
FINALE
WC777-004 Royal



FINALE
WC777-014 Navy



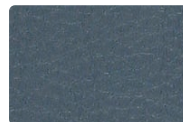
CARESSA
CA-063 Willow



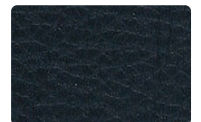
CARESSA
CA-083 Wasabi



CARESSA
CA-064 Cerulean



CARESSA
CA-044 Cadet



CARESSA
CA-004 Navy



ARABESQUE
WC950-007 Vanilla



HABITAT
WC958-007 Ecrú



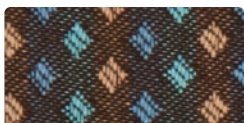
CELTIC
WC955-019 Curry



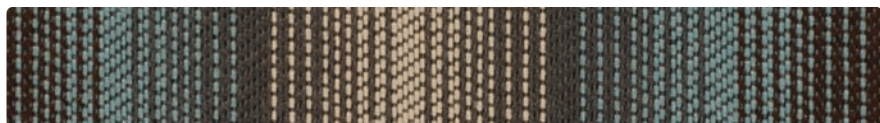
JOURNEY
WC952-000 Latte



ARISTOCRAT
WC951-002 Gilt



ARISTOCRAT
WC951-000 Zenith



JOURNEY
WC952-014 Zenith



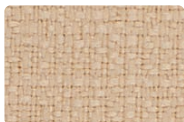
HABITAT
WC958-014 Zenith



CELTIC
WC955-000 Latte



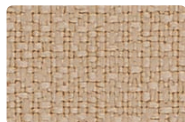
ARABESQUE
WC950-004 Indigo



FINALE
WC777-007 Biscuit



FINALE
WC777-002 Wheat



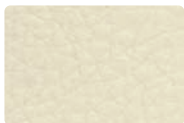
FINALE
WC777-027 Parchment



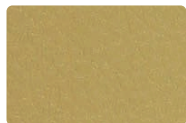
FINALE
WC777-000 Mocha



FINALE
WC777-006 Ebony



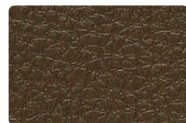
CARESSA
CA-057 Bisque



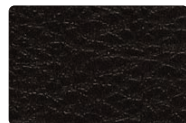
CARESSA
CA-002 Butterscotch



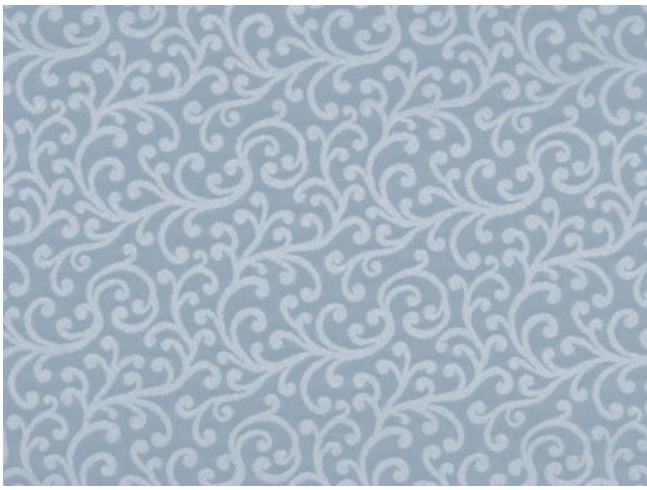
CARESSA
CA-070 Rawhide



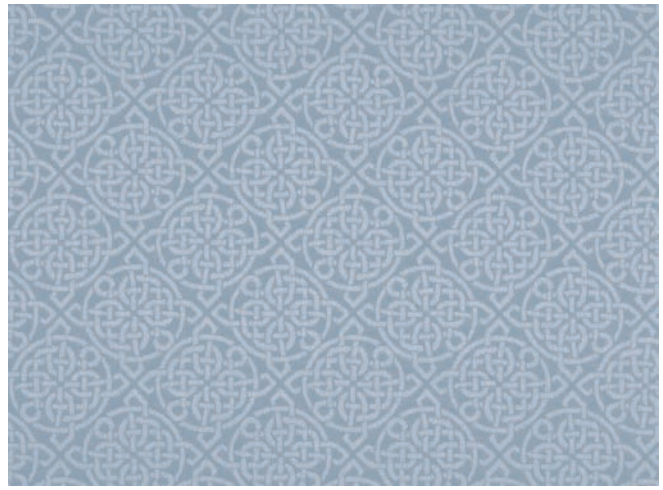
CARESSA
CA-040 Java



CARESSA
CA-006 Black



ARABESQUE - Repeat: 7" H, 7" V



CELTIC - Repeat: 3.75" H, 3.75" V



HABITAT - Repeat: 3.5" H, 7" V

CARESSA FR SPECIFIC TREATMENTS

Resilience^{SR} Stain Resistant Abrasion Resistant Anti-Bacterial Anti-Microbial Sulfide Stain Resistant Mildew Resistant Bleach Resistant (diluted 1:10)

CARESSA FR



Resilience^{SR} represents the latest technology in Faux Leather and Vinyl Protection, enhancing performance where it is needed the most.

Stain Resistance: With proper care, materials treated with **Resilience^{SR}** can be easily cleaned and will guard against stains maintaining the desired surface appearance for years to come.

Anti-Microbial & Anti-Bacterial Protection: Products treated with **Resilience^{SR}** are engineered to inhibit bacterial growth, as well as fungus, mold and mildew spores, resulting in a more hygienic environment.

Abrasion Resistance: **Resilience^{SR}** provides additional wear properties and surface durability to any Vinyl or Faux Leather, thereby increasing the life of the material.

Resilience^{SR} is not visible, and does not affect the hand of the material. **Resilience^{SR}** is engineered to last, even after repeated cleaning and wear. Specify **Resilience^{SR}** for the most demanding healthcare and hospitality applications.

CARESSA FR STAIN RESISTANCE

Ketchup	Mayonnaise	Soy Sauce	Butter	Tea	Whiskey	Coffee	Soda	Stain Resistance per CFFA 141 - Class 5 (Excellent) rating:
Blood	Urine	Iodine/Betadine	Mascara	Hair Spray	Suntan Lotion	Lipstick	Motor Oil	

CRYPTON STAIN RESISTANCE

	After 5 min./After 24 hrs.	Stain Resistance is based on a numerical scale with 5 being the highest for stain removal.	After 5 min./After 24 hrs.
Blood	Class 4-5/Class 4-5		Class 4-5/Class 4-5
Iodine	Class 4-5/Class 4-5		Class 4-5/Class 4-5
Ketchup	Class 4-5/Class 4-5	Urine	Class 4-5/Class 4-5
Milk	Class 4-5/Class 4-5	Suntan Lotion	Class 4-5/Class 4-5
		Black Coffee	Class 4-5/Class 4-5
		Cola	Class 4-5/Class 4-5

CARESSA FR CARE AND CLEANING INFORMATION

WS: Water/Solvent Cleaner - Spot clean, with a mild solvent, and upholstery shampoo, or the foam from a mild detergent. When using a solvent or dry cleaning product, follow instructions carefully and clean only in a well-ventilated room. Avoid any product that contains carbon tetrachloride or other toxic materials. With either method, pretest a small area before proceeding.

Bleach Resistant (diluted 1:10)

Prompt cleaning is always recommended.

CRYPTON CARE AND CLEANING INFORMATION

C: Crypton® Cleaning – Crypton fabrics are available in various fiber types, and all Crypton fabrics can be cleaned with soap and water. The ability to use bleach as a cleaner without damaging the fabric is fiber- and dye-dependent. Cryptons with solution-dyed (acrylic, nylon, olefin) fibers and all polyester Crypton selections can be cleaned safely with bleach; a 10% bleach and 90% water solution is recommended and thorough rinsing is required. For the best cleaning solution, use CRYPTON UPHOLSTERY CLEANER, available from Mayer Fabrics.

TECHNICAL INFORMATION

Proximity Crypton Plus II Coordinates

* ACT® Registered Certification Marks

Pattern 54"	Content and Backing	Weight/ Linear Yd	Pattern Repeat	Finish	Abrasion Wyzenbeek™	Light- Fastness	Flammability	Cleaning Code
ARABESQUE <i>Directional</i>	100% Polyester Crypton® Backing	14.75 oz.	7" H 7" V	Crypton®	70,000 Double Rubs	40 hours	Cal. 117-E NFPA 260 (Equiv. to UFAC)	C
ARISTOCRAT <i>Directional Shown Railroaded</i>	100% Polyester Crypton® Backing	12.19 oz.	1" H .375" V	Crypton®	80,000 Double Rubs	40 hours	Cal. 117-E NFPA 260 (Equiv. to UFAC)	C
CARESSA FR	100% Vinyl 100% Brushed Polyester Knit	29 oz.	None	Resilience®	650,000 Double Rubs	500 hours Suitable for marine use	See Below	WS
CELTIC <i>Directional</i>	100% Polyester Crypton® Backing	14.41 oz.	3.375" H 3.375" V	Crypton®	70,000 Double Rubs	40 hours	Cal. 117-E NFPA 260 (Equiv. to UFAC)	C
FINALE <i>Directional</i>	100% Polyester Crypton® Backing	15.5 oz.	None	Crypton®	243,000 Double Rubs	60 hours	Cal. 117-E NFPA 260 (Equiv. to UFAC) NFPA 701	C
HABITAT <i>Directional</i>	100% Polyester Crypton® Backing	14.40 oz.	3.5" H 7" V	Crypton®	75,000 Double Rubs	40 hours	Cal. 117-E NFPA 260 (Equiv. to UFAC)	C
JOURNEY <i>Directional Shown Railroaded</i>	100% Polyester Crypton® Backing	14.41 oz.	4.5" H 0" V	Crypton®	100,000 Double Rubs	40 hours	Cal. 117-E NFPA 260 (Equiv. to UFAC)	C


All patterns except Caressa FR may comply with California Technical Bulletin 133 when combined with appropriate components.

CARESSA FR FLAMMABILITY

California Technical Bulletin 117, Section E	Passes	Boston Fire Dept. Code (BFD 1X-1)	Passes
NFPA 260 (Equivalent to UFAC) Class 1	Passes	FMVSS 302	Passes
ASTM E-84 Class 1 or A (Adhered)	Passes	IMO A.652 (16) 8.2 & 8.3	Passes
BIFMA CS-191-53, Section 3	Passes	NY & NJ Port Authority Code	Passes
BIFMA Upholstery, Section 4	Passes		

Caressa FR should comply with California Technical Bulletin 133 when combined with appropriate components.

CRYPTON REDUCED ENVIRONMENTAL IMPACT

 GREENGUARD Indoor Air Quality Certification requires products to meet some of the world's toughest chemical emissions standards. GREENGUARD Children & Schools Certification requires those products to meet or exceed additional criteria, including CA Section 01350, to account for the unique health sensitivities of children.

All Crypton products are environmentally preferable. Crypton is produced in a world-class manufacturing operation. Crypton is committed to green and has incorporated Crypton's optimized green formulation in all Crypton upholstery, meaning a greener Crypton.

CRYPTON BACTERIAL AND FUNGUS/MILDEW RESISTANCE

Non leaching Silver Ion Technology microbial protection.

Excellent anti-bacterial and anti-fungal properties as evidenced by the following methods: 4 and 5 millimeter-wide growth-free zones produced against the staphylococcus aureus test organism.

Crypton resists fungal growth, test AATCC 30-2004, Aspergillus niger (ATCC #6275).

Crypton resists bacterial growth, test ISO 20743: 2007(E), Klebsiella pneumoniae (ATCC #4352).

EPA Approved – When Crypton's Disinfectant and Deodorizer is used on Crypton Super Fabric, you have a disinfected fabric system. Crypton is the first and only fabric approved by the EPA proven to be disinfected. Crypton's Disinfectant and Deodorizer will kill MRSA, VRSA, IV, E. Coli, hepatitis and many more bacteria and viruses.

ADDITIONAL INFORMATION

Custom Capabilities: All patterns can be custom colored. Minimum yardage applies.

Memo Samples: Please keep this card intact. Individual memo samples can be ordered on our website or by contacting customer service.

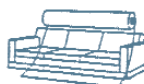
Color matching: Mayer Fabrics always attempts to ship a satisfactory commercial match. Because of industry standard dye lot variation, colors may not match exactly.

Specifications: Specifications are correct at the time of printing. Additional specifications are available on our website.

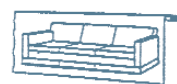
For information or assistance with products or services, call us at 800.428.4415 or refer to our website, www.mayerfabrics.com.



Railroaded: This feature allows reduction of seams and enables smoother furniture tailoring.



Fabric "up the roll"
or "regular" position



Fabric "railroaded" or
"top selvage" position

All railroaded patterns should be upholstered as shown on card.

GSA Contract #GS-28F-0022P



PCPIICCD  50112

† 317.267.2626 or 800.428.4415 ‡ 317.267.2629 or 877.7SAMPLE

www.mayerfabrics.com

©2012 Mayer-Paet, Inc.