

PANEL BASICS 2 COORDINATES

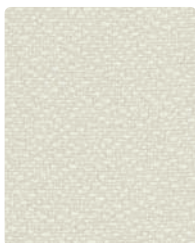


BASIC

FRESCO



162-010
Earth



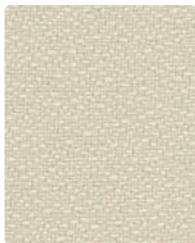
162-007
Parchment



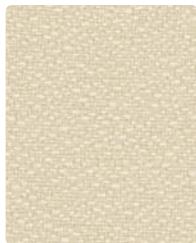
162-027
Taupe



162-000
Pumice



162-017
Sand



162-002
Caramel



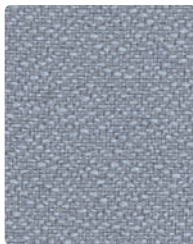
162-009
Mesa



162-003
Patina



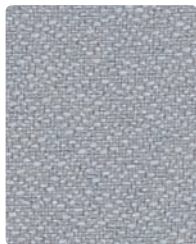
162-014
Blue Mist



162-004
Denim



162-026
Fog



162-016
Shadow



162-006
Ebony



163-000
Earth



163-007
Parchment



163-017
Sand



163-009
Raffia



163-003
Patina



163-014
Blue Mist



163-004
Sky



163-016
Fog



163-006
Pewter

STRATA



164-007
Ecreu



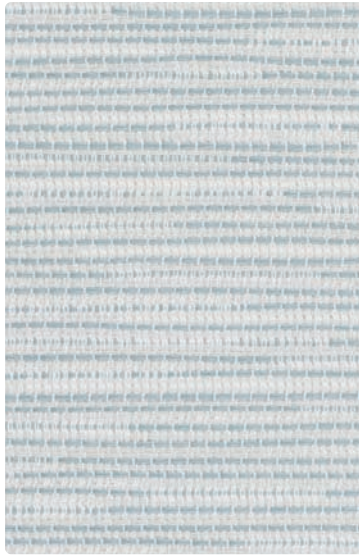
164-017
Raffia



164-010
Cliff



164-003
Patina



164-014
Cerulean



164-004
Horizon



164-020
Pumice



164-006
Zinc






164-000
Bark

TECHNICAL INFORMATION

Panel Basics 2

* ACT® Registered Certification Marks

Pattern 66"	Content and Backing		Weight/ Linear Yd	Pattern Repeat	Finish	Light- Fastness 	Flammability 	Cleaning Code
BASIC	100% Recycled Polyester (65% Pre-/35% Post-Consumer)	Yes	7.8 oz.	None	None	40 hours	ASTM E84 Class 1 or A (Unadhered) Cal. 117-E	WS
FRESCO <i>Directional</i>	65% Post-Consumer Recycled Polyester, 35% Polyester	Yes	10 oz.	None	None	40 hours	ASTM E84 Class 1 or A (Unadhered) Cal. 117-E	WS
STRATA <i>Directional</i>	65% Post-Consumer Recycled Polyester, 35% Polyester	Yes	10 oz.	7" H 8.75" V Non-Matching	None	40 hours	ASTM E84 Class 1 or A (Unadhered) Cal. 117-E	WS

REDUCED ENVIRONMENTAL IMPACT

Recycled Content



GREENGUARD Indoor Air Quality Certification requires products to meet some of the world's toughest chemical emissions standards. GREENGUARD Children & Schools Certification requires those products to meet or exceed additional criteria, including CA Section 01350, to account for the unique health sensitivities of children.

REDUCED ENVIRONMENTAL IMPACT - Basic



Sustainable. Attainable at Mayer Fabrics

CLEANING INFORMATION

WS: Water/Solvent Cleaner – Spot clean, with a mild solvent, an upholstery shampoo, or the foam from a mild detergent. When using a solvent or dry cleaning product, follow instructions carefully and clean only in a well-ventilated room. Avoid any product that contains carbon tetrachloride or other toxic materials. With either method, pretest a small area before proceeding.

For detailed care and cleaning information for each pattern, please refer to the Mayer Fabrics website or contact customer service.

ADDITIONAL INFORMATION

Custom Capabilities: All patterns can be custom colored. Minimum yardage applies.

Memo Samples: Please keep this card intact. Individual memo samples can be ordered on our website or by contacting customer service.

Color matching: Mayer Fabrics always attempts to ship a satisfactory commercial match. Because of industry standard dye lot variation, colors may not match exactly.

Specifications: Specifications are correct at the time of printing. Additional specifications are available on our website.

For information or assistance with products or services, call us at 800.428.4415 or refer to our website, www.mayerfabrics.com.



This 100% polyester panel fabric is included in the Underwriters Laboratory Fabric Recognition Program. Additional testing of the U.L. recognized component fabric is not required on approved panels from participating manufacturers.

GSA Contract #GS-28F-0022P



T 317.267.2626 or 800.428.4415 F 317.267.2629 or 877.7SAMPLE

www.mayerfabrics.com
©2012 Mayer-Paetz, Inc.

PB2CCD 1 50112