

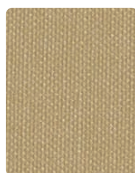


KWALU CRYPTON PLUS COORDINATES
from **MAYER FABRICS**





PARADISE
WC730-014 Powder Blue



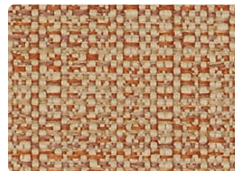
SILVERWEAVE
SW-007 Camel



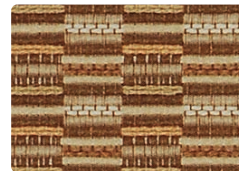
SILVERWEAVE
SW-017 Doe



SILVERWEAVE
SW-000 Cocoa



BRIO
WC783-007 Flax



REPLAY
WC790-007 Mushroom



ACCLAIM
WC751-017 Toast



ACCLAIM
WC751-026 Limestone



ACCLAIM
WC751-010 Bark



CELTIC
WC955-019 Curry



BEBOP
WC766-000 Walnut



PRIMO
WC954-017 Flax



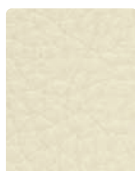
ARISTOCRAT
WC951-000 Zenith



TIME LINE
WC795-006 Granite



WHIMSY
WC734-000 Dusk



CARESSA FR
CA-057 Bisque



CARESSA FR
CA-070 Rawhide



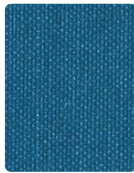
CARESSA FR
CA-040 Java



ROUND 'N ROUND
WC762-003 Capri



SILVERWEAVE
SW-013 Willow



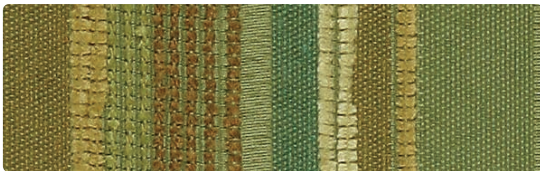
SILVERWEAVE
SW-044 Calypso



SILVERWEAVE
SW-014 Baltic



HABITAT
WC958-004 Indigo



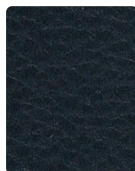
FATHOM
WC763-003 Lagoon



CARESSA FR
CA-083 Wasabi



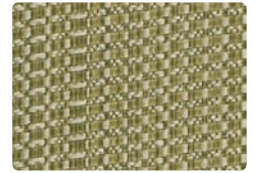
CARESSA FR
CA-064 Cerulean



CARESSA FR
CA-004 Navy



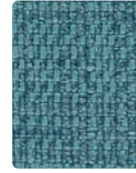
PRIMO
WC954-013 Garden



STANZA
WC737-013 Basil



ACCLAIM
WC751-003 Basil



ACCLAIM
WC751-014 Calypso



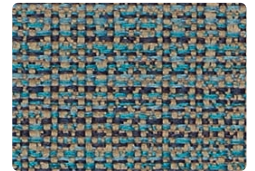
ACCLAIM
WC751-004 Indigo



AMADEUS
WC729-003 Aloe



TIME LINE
WC795-024 Azure



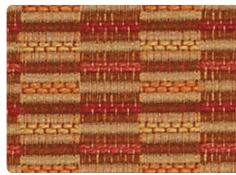
BRIO
WC783-014 Aquamarine



PARADISE
WC730-004 Indigo



ARABESQUE
WC950-009 Tangerine



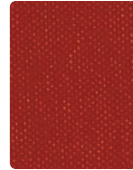
REPLAY
WC790-009 Terra Cotta



PRIMO
WC954-009 Persimmon



SILVERWEAVE
SW-002 Sienna



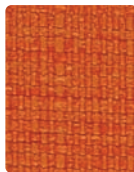
SILVERWEAVE
SW-009 Cayenne



SILVERWEAVE
SW-008 Orchid



ACCLAIM
WC751-007 Parchment



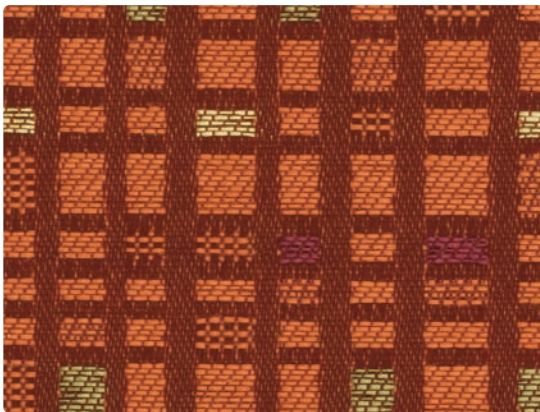
ACCLAIM
WC751-009 Orange Peel



ACCLAIM
WC751-001 Cardinal



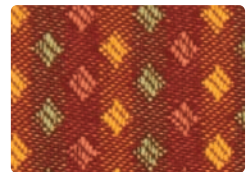
HABITAT
WC958-001 Russet



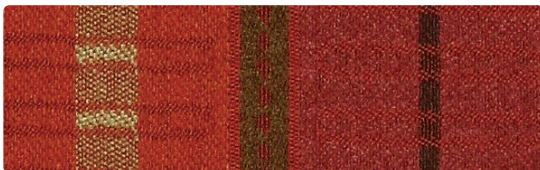
SOCIAL NETWORK
WC960-009 Flame



TIME LINE
WC795-001 Fiesta



ARISTOCRAT
WC951-001 Tango



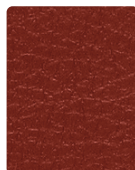
RUNWAY
WC776-001 Sunset



CARESSA FR
CA-019 Bittersweet



CARESSA FR
CA-021 Red Pepper



CARESSA FR
CA-001 Ruby



WHIMSY
WC734-001 Magenta



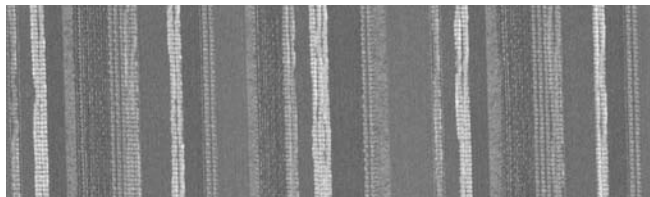
Amadeus - Repeat: 15" H, 12.125" V



Arabesque - Repeat: 7" H, 7" V



Celtic - Repeat: 3.375" H, 3.375" V



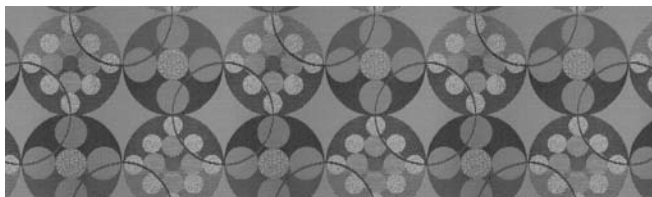
Fathom - Repeat: 6.75" H, 0" V



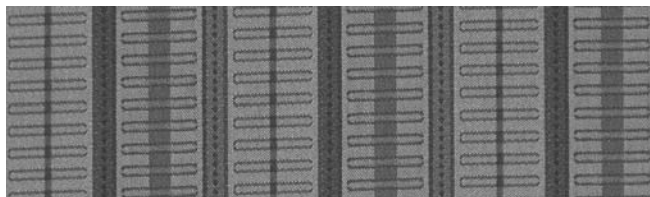
Habitat - Repeat: 3.5" H, 7" V



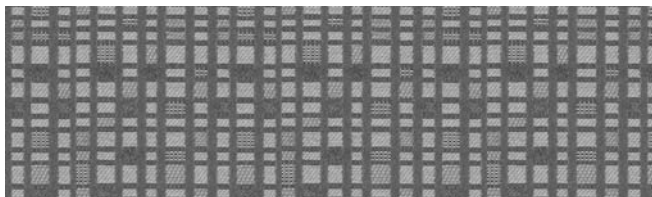
Paradise - Repeat: 13.5" H, 27.8125" V



Round 'N Round - Repeat: 6.75" H, 7.25" V



Runway - Repeat: 3.625" H, .375" V



Social Network - Repeat: 3.5" H, 6" V



Whimsy - Repeat: 13.5" H, 13.5" V

CRYPTON REDUCED ENVIRONMENTAL IMPACT

Recycled Content - Acclaim, Amadeus, Paradise, Replay, Whimsy

All Crypton products are environmentally preferable. Crypton is produced in a world-class manufacturing operation. Crypton is committed to green and has incorporated Crypton's optimized green formulation in all Crypton upholstery, meaning a greener Crypton.



GREENGUARD Indoor Air Quality Certification requires products to meet some of the world's toughest chemical emissions standards. GREENGUARD Children & Schools Certification requires those products to meet or exceed additional criteria, including CA Section 01350, to account for the unique health sensitivities of children.

Acclaim, Paradise, Replay, Whimsy



Paradise, Replay



Eco-System[®]
Sustainable. Attainable at Mayer Fabrics

CRYPTON STAIN RESISTANCE

	After 5 min./After 24 hrs.
Blood	Class 4-5/Class 4-5
Iodine	Class 4-5/Class 4-5
Ketchup	Class 4-5/Class 4-5
Milk	Class 4-5/Class 4-5

Stain Resistance is based on a numerical scale with 5 being the highest for stain removal.

	After 5 min./After 24 hrs.
Urine	Class 4-5/Class 4-5
Suntan Lotion	Class 4-5/Class 4-5
Black Coffee	Class 4-5/Class 4-5
Cola	Class 4-5/Class 4-5

CRYPTON BACTERIAL AND FUNGUS/MILDEW RESISTANCE

Non leaching Silver Ion Technology microbial protection.

Excellent anti-bacterial and anti-fungal properties as evidenced by the following methods: 4 and 5 millimeter-wide growth-free zones produced against the staphylococcus aureus test organism.

Crypton resists fungal growth, test AATCC 30-2004, Aspergillus niger (ATCC #6275).

Crypton resists bacterial growth, test ISO 20743: 2007(E), Klebsiella pneumoniae (ATCC #4352).

EPA Approved – When Crypton's Disinfectant and Deodorizer is used on Crypton Super Fabric, you have a disinfected fabric system. Crypton is the first and only fabric approved by the EPA proven to be disinfected. Crypton's Disinfectant and Deodorizer will kill MRSA, VRSA, IV, E. Coli, hepatitis and many more bacteria and viruses.

CRYPTON CARE AND CLEANING INFORMATION

C: Crypton® Cleaning – Crypton fabrics are available in various fiber types, and all Crypton fabrics can be cleaned with soap and water. The ability to use bleach as a cleaner without damaging the fabric is fiber- and dye-dependent. Cryptons with solution-dyed (acrylic, nylon, olefin) fibers and all polyester Crypton selections can be cleaned safely with bleach; a 1:10 ratio = 10% bleach, 90% water solution is recommended and thorough rinsing is required. For the best cleaning solution, use CRYPTON UPHOLSTERY CLEANER, available from Mayer Fabrics.

CARESSA & SILVERWEAVE CARE AND CLEANING INFORMATION

WS: Water/Solvent Cleaner – Spot clean, with a mild solvent, an upholstery shampoo, or the foam from a mild detergent. When using a solvent or dry cleaning product follow instructions carefully and clean only in a well-ventilated room. Avoid any product that contains carbon tetrachloride or other toxic materials. With either method, pretest a small area before proceeding.





Bleach cleanable.

For detailed care and cleaning information for each pattern, please refer to the Mayer Fabrics website or contact customer service.

TECHNICAL INFORMATION

Kwalu Crypton Plus Coordinates from Mayer Fabrics

* ACT® Registered Certification Marks

Pattern 54"	Content and Backing		Weight/ Linear Yd	Pattern Repeat	Finish	Abrasion Wyzenbeek 	Light Fastness 	Flammability 	Cleaning Code
ACCLAIM <i>Directional</i>	60% Post-Consumer Recycled Polyester, 40% Polyester Backing: Crypton® Green	Yes	20.45 oz.	Non- Matching	Crypton® Green	305,000 Double Rubs	40 hours	Cal. 117-E NFPA 260 (Equip. to UFAC)	C
AMADEUS <i>Directional</i>	41% Recycled Polyester (33% Pre-/8% Post-Consumer), 36% Cotton, 23% Rayon Backing: Crypton®	Yes	15.68 oz.	15" H 12.125" V	Crypton®	50,000 Double Rubs	40 hours	Cal. 117-E NFPA 260 (Equip. to UFAC)	C
ARABESQUE <i>Directional</i>	100% Polyester Backing: Crypton®	Yes	14.75 oz.	7" H 7" V	Crypton®	70,000 Double Rubs	40 hours	Cal. 117-E NFPA 260 (Equip. to UFAC)	C
ARISTOCRAT <i>Directional, Railroaded</i>	100% Polyester Backing: Crypton®	Yes	12.19 oz.	1" H .375" V	Crypton®	80,000 Double Rubs	40 Hours	Cal. 117-E NFPA 260 (Equip. to UFAC)	C
BEBOP <i>Directional</i>	58% Polyester, 42% Rayon Backing: Crypton®	Yes	13.9 oz.	3.25" H 4.125" V	Crypton®	153,000 Double Rubs	40 Hours	Cal. 117-E NFPA 260 (Equip. to UFAC)	C
BRIO <i>Directional</i>	100% Polyester Backing: Crypton®	Yes	14.2 oz.	Non- Matching	Crypton®	125,000 Double Rubs	60 Hours	Cal. 117-E NFPA 260 (Equip. to UFAC)	C
CARESSA FR	100% Vinyl Backing: 100% Brushed Polyester Knit	No	29 oz.	None	Resilience ^{SR}	650,000 Double Rubs	500 hours Suitable for Marine Use	Cal. 117-E NFPA 260 (Equip. to UFAC) See Mayer website for more tests	WS
CELTIC <i>Directional</i>	100% Polyester Backing: Crypton®	Yes	14.41 oz.	3.375" H 3.375" V	Crypton®	70,000 Double Rubs	40 Hours	Cal. 117-E NFPA 260 (Equip. to UFAC)	C
FATHOM <i>Directional, Railroaded</i>	45% Polyester, 44% Rayon, 11% Acrylic Backing: Crypton®	Yes	12.3 oz.	6.75" H 0" V	Crypton®	55,000 Double Rubs	60 Hours	Cal. 117-E NFPA 260 (Equip. to UFAC)	C
HABITAT <i>Directional</i>	100% Polyester Backing: Crypton®	Yes	14.40 oz.	3.5" H 7" V	Crypton®	75,000 Double Rubs	40 Hours	Cal. 117-E NFPA 260 (Equip. to UFAC)	C
PARADISE <i>Directional</i>	100% Next* Post-Consumer Recycled Polyester Backing: Crypton® Green	Yes	17.7 oz.	13.5" H 27.8125" V	Crypton Green*	50,000 Double Rubs	40 Hours	Cal. 117-E NFPA 260 (Equip. to UFAC)	C
PRIMO <i>Directional</i>	100% Polyester Backing: Crypton®	Yes	18.23 oz.	.75" H 1" V	Crypton®	70,000 Double Rubs	40 hours	Cal. 117-E NFPA 260 (Equip. to UFAC)	C
REPLAY <i>Directional</i>	100% Recycled Polyester (57% Pre-/43% Post-Consumer) Backing: Crypton Green*	Yes	16.6 oz.	.625" H .5" V	Crypton Green*	50,000 Double Rubs	40 hours	Cal. 117-E NFPA 260 (Equip. to UFAC)	C
ROUND 'N ROUND <i>Directional</i>	62% Rayon, 38% Polyester Backing: Crypton®	Yes	17.35 oz.	6.75" H 7.25" V	Crypton®	87,000 Double Rubs	40 Hours	Cal. 117-E NFPA 260 (Equip. to UFAC)	C
RUNWAY <i>Directional, Railroaded</i>	44% Polyester, 36% Rayon, 20% Cotton Backing: Crypton®	Yes	11.7 oz.	3.625" H .375" V	Crypton®	102,000 Double Rubs	40 Hours	Cal. 117-E NFPA 260 (Equip. to UFAC)	C
SILVERWEAVE <i>Directional</i>	100% Vinyl/Urethane Topcoat Backing: 100% Polyester Hi-Loft ^{2TM}	No	30 oz.	None	Silverguard® and PERMABLOK ^{SR}	930,000 Double Rubs	1000 hours Suitable for Marine Use	Cal. 117-E NFPA 260 (Equip. to UFAC) See Mayer website for more tests	WS
SOCIAL NETWORK <i>Directional</i>	100% Polyester Backing: Crypton®	Yes	15.29 oz.	3.5" H 6" V	Crypton®	70,000 Double Rubs	40 Hours	Cal. 117-E NFPA 260 (Equip. to UFAC)	C
STANZA <i>Directional</i>	100% Polyester Backing: Crypton®	Yes	9.36 oz.	3.75" H 0" V	Crypton®	50,000 Double Rubs	40 Hours	Cal. 117-E NFPA 260 (Equip. to UFAC)	C
TIME LINE <i>Directional, Railroaded</i>	54% Cotton, 46% Polyester Backing: Crypton®	Yes	14.76 oz.	2.25" H 0" V	Crypton®	111,000 Double Rubs	60 Hours	Cal. 117-E NFPA 260 (Equip. to UFAC)	C
WHIMSY <i>Directional</i>	60% Next* Post-Consumer Recycled Polyester, 40% Polyester Backing: Crypton® Green	Yes	16.79 oz.	13.5" H 13.5" V	Crypton® Green	50,000 Double Rubs	40 Hours	Cal. 117-E NFPA 260 (Equip. to UFAC)	C

All patterns may comply with California Technical Bulletin 133 when combined with appropriate components.

ADDITIONAL INFORMATION

Additional colors not swatched on this card are available. Please contact Mayer Fabrics for more information.

Custom Capabilities: All patterns can be custom colored. Minimum yardage applies.

Memo Samples: Please keep this card intact. Individual memo samples can be ordered on our website or by contacting customer service.

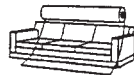
Color matching: Mayer Fabrics always attempts to ship a satisfactory commercial match. Because of industry standard dye lot variation, colors may not match exactly.

Specifications: Specifications are correct at the time of printing. Additional specifications are available on our website.

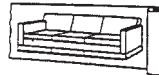
For information or assistance with products or services, call us at 800.428.4415 or refer to our website, www.mayerfabrics.com.



Railroaded: This feature allows reduction of seams and enables smoother furniture tailoring.



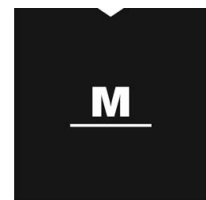
Fabric "up the roll"
or "regular" position



Fabric "railroaded" or
"top selvage" position

We recommend all railroaded patterns should be upholstered as shown on card.

kwalu



MAYERFABRICS