

ENLIVEN

Privacy Curtains



Privacy Curtains



PC9-003 Green Tea



PC9-002 Sunshine



PC9-009 Mango



PC9-004 Sky Blue



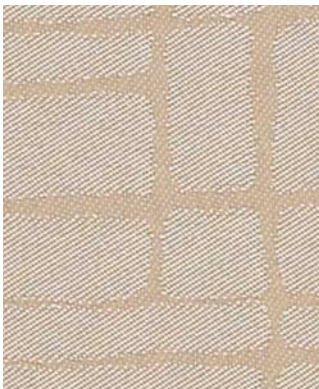
PC9-007 Ecru



PC9-005 Lavender



PC9-013 Ocean



PC9-017 Abalone



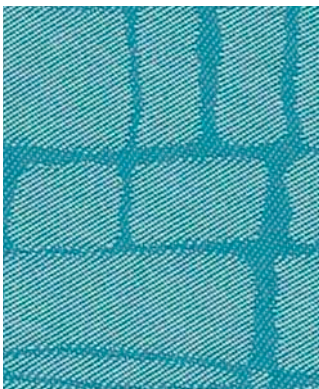
PC9-014 Periwinkle



PC9-023 Emerald



PC9-006 Taupe



PC9-033 Turquoise

Application
Multi-Use

Content
100% Polyester Intrinsic FR

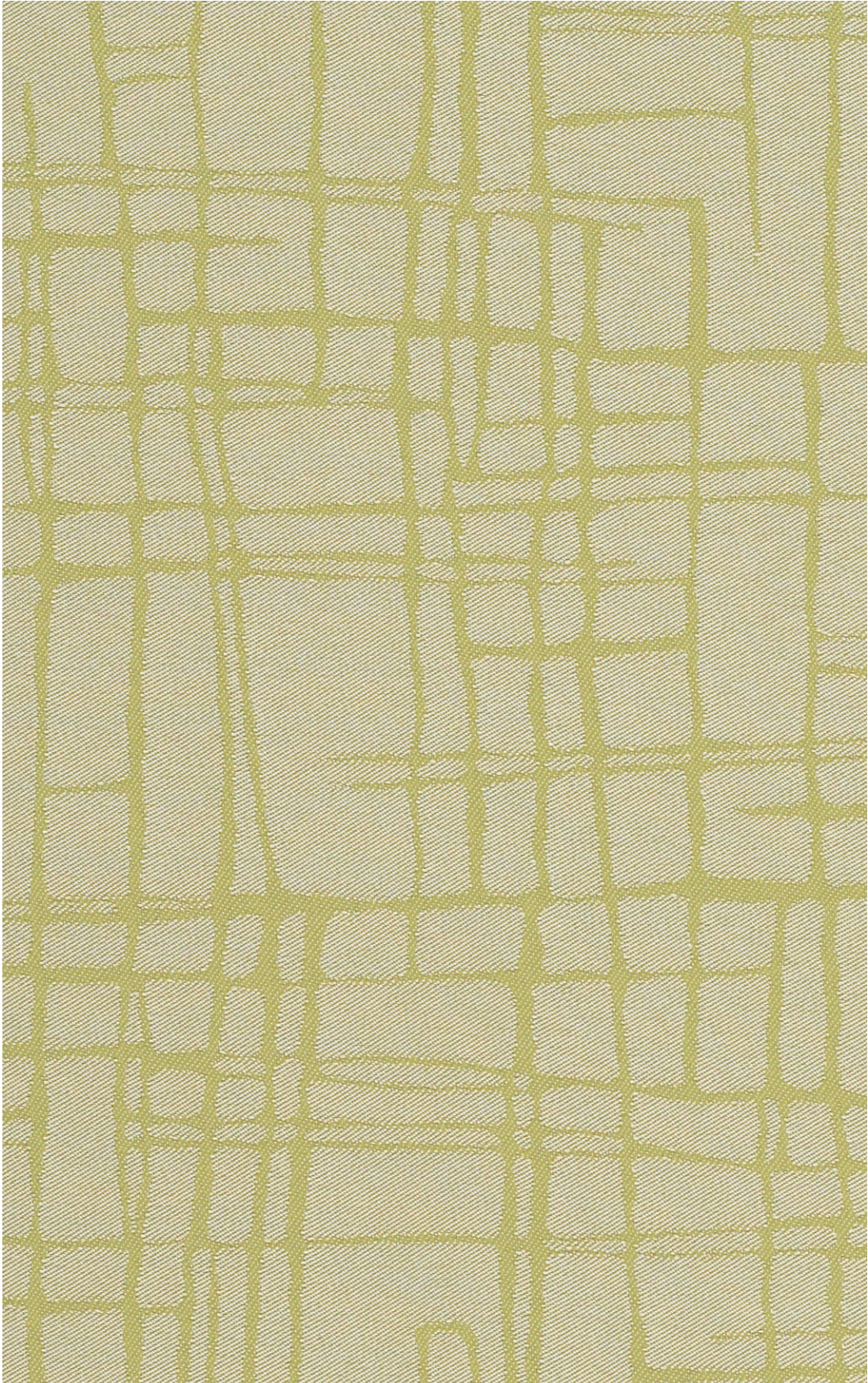
Width
72 inches

Finish
Antimicrobial

Reduced Environmental Impact



Children & Schools
GREENGUARD
Indoor Air Quality Certified



PC9-003 Green Tea

TECHNICAL INFORMATION

Content: 100% Polyester Intrinsic FR	Finish: Antimicrobial	Visual Repeat: 13" H, 15.25" V
Width: 72"	Cleaning Code: PC	Directional: Yes - shown as woven up the roll
Weight: 10 oz./linear yard		Railroaded: No

PERFORMANCE (*ACT Registered Certification Marks)	Test Method	Results
Washing Performance: Wash Tested to: Appearance Retention:	AATCC-135	120° F Less than 2.5% shrinkage after 5 launderings
Breaking Strength: *	ASTM-D-5034 (Grab test)	Warp 110 lbs min / Fill 75 lbs min
Seam Slippage: *	ASTM-D-434	Warp 25 lbs min / Fill 25 lbs min
Colorfastness to Crocking: *	AATCC-8	Dry: Class 4 min / Wet: Class 4 min
Colorfastness to Light: *	AATCC-16	Class 4 min. at 40 hours

Class in the colorfastness requirements is based on a numerical scale of 5 for negligible or no color transfer to 1 for very severe color change or color transfer.

FLAMMABILITY *

NFPA 701 Test Method 1	Passes
Do not post treat as it may affect inherent flame retardancy	

REDUCED ENVIRONMENTAL IMPACT



GREENGUARD Indoor Air Quality Certification requires products to meet some of the world's toughest chemical emissions standards. GREENGUARD Children & Schools Certification requires those products to meet or exceed additional criteria, including CA Section 01350, to account for the unique health sensitivities of children.

CLEANING INFORMATION

PC: Privacy Curtain - Wash Cycle: Process Cubicle fabric as any ordinary colored fabric, temperature not to exceed 160°F. Use a synthetic detergent. Add softener to the last rinse cycle. **Extracting Cycle:** Fabric requires no more than 2-4 min. extracting, depending on size of load and equipment used. **Drying Cycle:** Do not overload dryer. Tumble dry for 3-5 min. on synthetic cycle 110°F. As with all polyester fabrics, excessive heat will detract from the permanent press characteristics of this fabric. **Finishing:** If fabric is folded upon completion of the drying cycle, no finishing is required. Occasional light touch-up with a hand iron (275°F max.), or using a flat bed press with covered head may be desired for smoother seams. Important: Use cover cloth between fabric and iron or pressing head. Avoid prolonged contact with heat. **Notes:** Do not use caustic soap or bleach. Do not put through a mangle.

ADDITIONAL INFORMATION

Custom Capabilities: All patterns can be custom colored. Minimum yardage applies.
Memo Samples: Please keep this card intact. Individual memo samples can be ordered on our web site or by contacting customer service.
Color Matching: Mayer Fabrics always attempts to ship a satisfactory commercial match. Because of industry standard dye lot variation, colors may not match exactly.
Specifications: Specifications are correct at the time of printing. Current specifications are available on our web site.
For information or assistance with products or services, call us at 800.428.4415 or refer to our web site, www.mayerfabrics.com.

