



ECO SYSTEM
ELEMENT PLUS COORDINATES





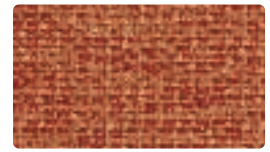
EQUATION
323-000 Bronze



ELEMENT
316-013 Sulfur



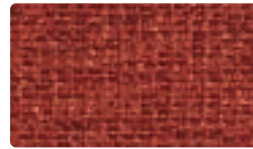
FACTOR
335-009 Copper



ELEMENT
316-009 Copper



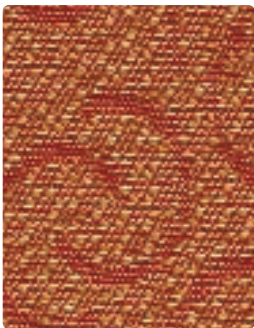
LUNAR
334-002 Gold



ELEMENT
316-019 Red Clay



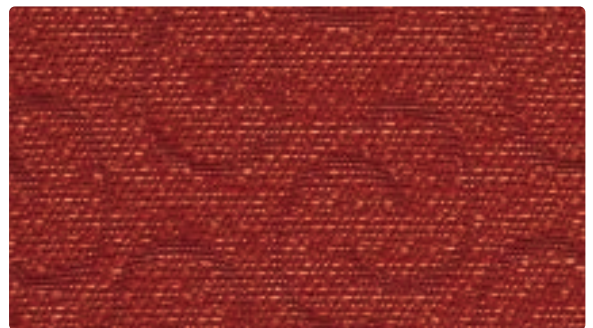
FOUNDATION10
350-019 Terra Cotta



CATALYST
322-009 Copper



EQUATION
323-009 Russet



CATALYST
322-001 Rouge



LUNAR
334-001 Pomegranate



FACTOR
335-001 Pomegranate



FOUNDATION10
350-001 Wine



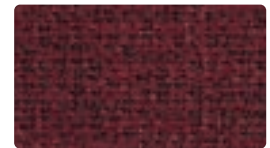
FOUNDATION10
350-011 Flame



EQUATION
323-001 Rosewood



COMPONENT
324-001 Ruby



ELEMENT
316-008 Plum



PHOENIX
PH-022 Butterscotch



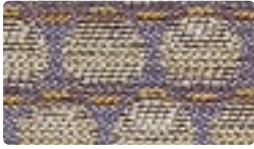
PHOENIX
PH-009 Terra Cotta



PHOENIX
PH-001 Berry



PHOENIX
PH-019 Chili



EQUATION
323-024 Dusk



CATALYST
322-014 Dusk



EQUATION
323-003 Jade



CATALYST
322-003 Jade



COMPONENT
324-014 Sky



ELEMENT
316-024 Turquoise



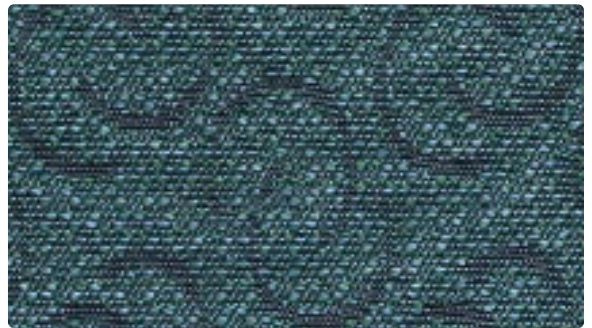
COMPONENT
324-013 Turquoise



FOUNDATION10
350-044 Capri



LUNAR
334-014 Turquoise



CATALYST
322-024 Teal



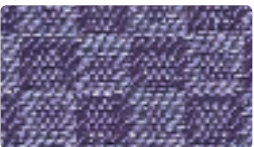
EQUATION
323-004 Indigo



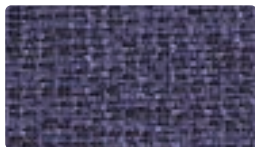
FOUNDATION10
350-064 Ocean



EQUATION
323-014 Aquamarine



FACTOR
335-004 Cobalt



ELEMENT
316-004 Sapphire



LUNAR
334-004 Cobalt



FOUNDATION10
350-004 Sapphire



PHOENIX
PH-023 Mallard



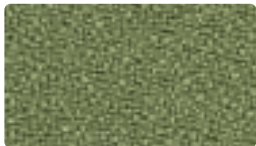
PHOENIX
PH-034 Marina



PHOENIX
PH-024 Cobalt



PHOENIX
PH-004 Admiral



FOUNDATION10
350-093 Basil



EQUATION
323-013 Limelight



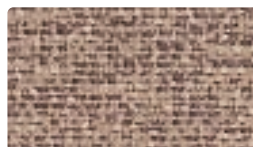
CATALYST
322-013 Limelight



ELEMENT
316-003 Feldspar



FACTOR
335-013 Limelight



ELEMENT
316-007 Putty



COMPONENT
324-003 Limelight



ELEMENT
316-010 Taupe



FOUNDATION10
350-020 Bark



CATALYST
322-000 Taupe



COMPONENT
324-000 Bronze



FOUNDATION10
350-007 Sandstone



EQUATION
323-006 Ebony



ELEMENT
316-000 Earth



FACTOR
335-006 Charcoal



LUNAR
334-000 Mocha



FOUNDATION10
350-006 Ebony



PHOENIX
PH-002 Wheat



PHOENIX
PH-010 Mocha



PHOENIX
PH-026 Charcoal



PHOENIX
PH-006 Lava



LUNAR - Repeat: 20.5" H, 10.5" V, Random Match

CLEANING INFORMATION

WS: Water/Solvent Cleaner – Spot clean, with a mild solvent, an upholstery shampoo, or the foam from a mild detergent. When using a solvent or dry cleaning product, follow instructions carefully and clean only in a well-ventilated room. Avoid any product that contains carbon tetrachloride or other toxic materials. With either method, pretest a small area before proceeding.

PHOENIX CLEANING INFORMATION

Day-to-day soil – Remove ordinary dirt and smudges with a mild soap and warm water solution. Dry with a soft, lint-free cloth or towel. For more difficult stains, use a stronger detergent; however, follow the detergent manufacturer's instructions closely.

More difficult stains – Use nonabrasive household cleaners such as Formula 409® All-Purpose Spray Cleaner or Fantastik® Spray Cleaner with water and a soft cloth. A mild solvent-type cleaner such as rubbing alcohol (isopropyl/alcohol) may also be used. Apply moderately with a soft cloth. Dry area with another cloth, rinse with water and dry.

FOUNDATION10 TEN YEAR WARRANTY

FOUNDATION10 is covered by a 10-year limited performance warranty from the date of installation, when used for seating applications. FOUNDATION10 is warranted against wear through (i.e. the complete deterioration of the fabric's structure in a particular area) if properly installed and maintained. This warranty does not cover damage due to abuse, misuse, vandalism, inadequate padding or abrasion from other seating components or furniture, use of improper cleaning agents or methods and use subsequent to ownership by the original purchaser. Mayer Fabrics can provide a copy of the manufacturer's warranty.





If FOUNDATION10 fails to perform during the 10-year warranty period, the affected area of fabric will be repaired or replaced including labor and materials upon written request of the customer.

Except as expressly provided herein, Mayer Fabrics makes no representations or warranties, express or implied, including, without limitation, any warranty of merchantability or fitness of its products for any particular purpose, and hereby disclaim the same.

TECHNICAL INFORMATION

Eco System Element Plus Coordinates

ACT Registered Certification Marks

Pattern 54"	Fiber Content and Backing (Pre C. = Consumer)		Weight/ Linear Yd	Pattern Repeat	Finish	Abrasion  Wyzenbeek	Light  Fastness	Flammability 	Cleaning Code
CATALYST <i>Directional</i>	100% Pre C. Recycled Polyester		8.6 oz.	2.5" H 3" V	None	90,000 Double Rubs	60 hours	Cal. 117-E NFPA 260 (Equiv. to UFAC)	WS
COMPONENT <i>Directional</i>	100% Pre C. Recycled Polyester	Yes Yes	9.6 oz.	7.14" H 3" V Random Match	None	50,000 Double Rubs	60 hours	Cal. 117-E NFPA 260 (Equiv. to UFAC)	WS
ELEMENT <i>Directional</i>	100% Pre C. Recycled Polyester 14% Polyester	Yes	13 oz.	Non-Matching	StainSmart® with AlphaSan®	130,000 Double Rubs	60 hours	Cal. 117-E NFPA 260 (Equiv. to UFAC)	WS
EQUATION <i>Directional</i>	100% Pre C. Recycled Polyester	Yes	9.61 oz.	1" H .75" V	None	70,000 Double Rubs	60 hours	Cal. 117-E NFPA 260 (Equiv. to UFAC)	WS
FACTOR <i>Directional</i>	100% Pre C. Recycled Polyester		9.61 oz.	.625" H .5" V	None	60,000 Double Rubs	40 hours	Cal. 117-E NFPA 260 (Equiv. to UFAC)	WS
FOUNDATION10 <i>Directional</i> (T)	65% Pre C. Recycled Polyester 35% Post C. Recycled Polyester	Yes Yes	13 oz.	None	Stain Repellent	1,000,000 Double Rubs	60 hours	Cal. 117-E NFPA 260 (Equiv. to UFAC) ASTM E84	WS
LUNAR <i>Directional</i>	100% Pre C. Recycled Polyester	Yes	9.22 oz.	20.5" H 10.5" V Random	None	70,000 Double Rubs	40 hours	Cal. 117-E NFPA 260 (Equiv. to UFAC)	WS
PHOENIX	100% Polyurethane - PVC FREE Brushed Woven Rayon Backing	No	19.5 oz.	None	None	1,002,000 Double Rubs	40 hours	Cal. 117-E NFPA 260 (Equiv. to UFAC) MVSS-302	WS

May comply with California Technical Bulletin 133 when combined with appropriate components.

REDUCED ENVIRONMENTAL IMPACT

 **GREENGUARD Indoor Air Quality Certification** requires products to meet some of the world's toughest chemical emissions standards. **GREENGUARD Children & Schools Certification** requires those products to meet or exceed additional criteria, including CA Section 01350, to account for the unique health sensitivities of children.

PHOENIX REDUCED ENVIRONMENTAL IMPACT

Chlorine, bromine, or phthalate ester plasticizer materials were not used in the manufacturing of Phoenix.

Many of the materials used in the manufacturing of Phoenix may contain very low VOC content. Phoenix is protected by a top-finish coating that contains organic solvents. The organic solvents (VOC's) portion of the top-finish are removed during the manufacturing process. The final product contains only trace levels of VOC's. The material may meet Chair/Cushion VOC requirements.

ELEMENT STAIN RESISTANCE

StainSmart® – StainSmart® provides fabrics their ability to repel stains by causing liquids, such as coffee, juice, water or sodas, to bead up on the surface where they can be easily wiped away. StainSmart®'s stain release features mean that a broad array of common stains – dirt, motor oil, permanent markers, lipstick – can be cleaned with soap, water and a vacuum should they penetrate the fabric's surface.

ELEMENT BACTERIAL RESISTANCE

AlphaSan® is a silver-based antimicrobial technology, which has been documented to be safe and effective. AlphaSan® inhibits the growth of mold, mildew and other microorganisms through the safe release of silver ions, resulting in a fresh surface, free from odors and stains.

ADDITIONAL INFORMATION

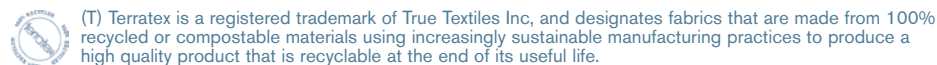
Custom Capabilities: All patterns can be custom colored. Minimum yardage applies.

Memo Samples: Please keep this card intact. Individual memo samples can be ordered on our web site or by contacting customer service.

Color Matching: Mayer Fabrics always attempts to ship a satisfactory commercial match. Because of industry standard dye lot variation, colors may not match exactly.

Specifications: Specifications are correct at the time of printing. Current specifications are available on our website.

For information or assistance with products or services, call us at 800.428.4415 or refer to our web site. www.mayerfabrics.com.



GSA Contract #GS-28F-0022P

T 317.267.2626 or 800.428.4415 F 317.267.2629 or 877.7SAMPLE

www.mayerfabrics.com

©2008 Mayer-Paetz, Inc.

ESEPCCD  51010