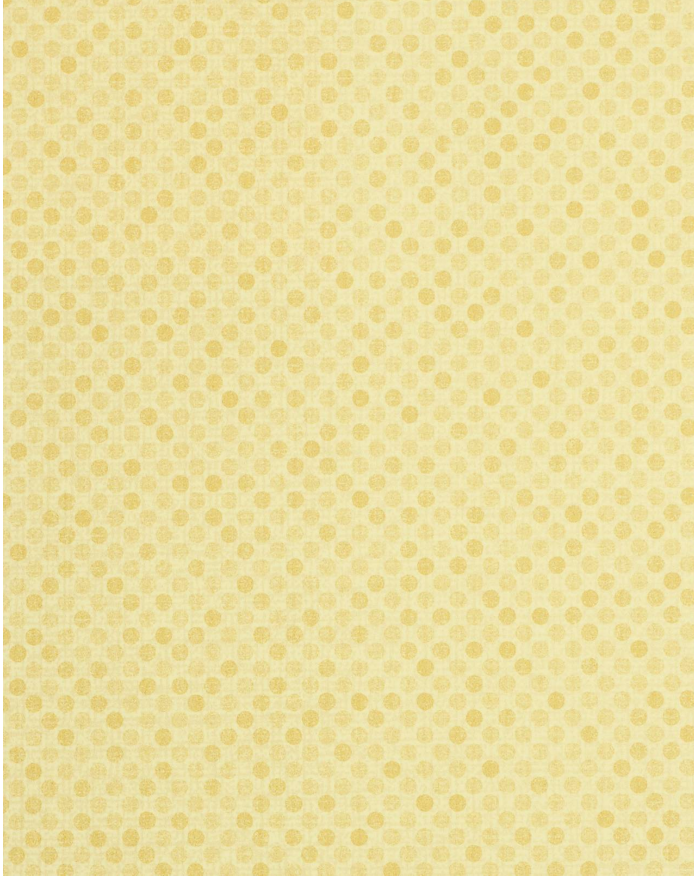


# MICRO DOT SUNFLOWER

MD-002

# MAYER FABRICS



## CATEGORY

Seating

## PROPERTIES



## CONTENT

100% Vinyl, backing content unavailable

## FINISH

Soil & Stain Resistant Top Coat with Ink Resistant Technology

## WIDTH

54"

## WEIGHT

28

## SHOWN RAILROADED

No

## DIRECTIONALITY

Yes

## ROLL LENGTH

40

## VISUAL REPEAT

0.25, 0.25

## BREAKING STRENGTH

Warp: 85.0 lbs. / Fill: 75.0 lbs.

## SEAM SLIPPAGE

Warp: lbs. / Fill: lbs.

## ABRASION RESISTANCE

Passes 1,300,000 Double Rubs\* (Wyzenbeek/Cotton Duck) \*

\* Abrasion test results exceeding ACT Performance Guidelines are not an indicator of product lifespan.

## PILLING RESISTANCE

Class: N/A

## COLORFASTNESS TO CROCKING

Dry: Class 4 min / Wet: Class 4 min

## COLORFASTNESS TO LIGHT

650 hours

## APPLICATION

Atrium, Indoor, Marine, Outdoor

## CLEANING

**WS: Water/Solvent Cleaner** - Spot clean with a mild solvent, an upholstery shampoo, or the foam from a mild detergent.

When using a solvent or dry cleaning product, follow instructions carefully and clean only in a well-ventilated room. Avoid any product that contains carbon tetrachloride or other toxic materials. With either method, pretest a small area before proceeding. Always rinse promptly with clean water.

**CFC: Coated Fabrics Cleaning** - When a spill/stain occurs wipe immediately with a clean dry cloth. Carefully remove the majority of the stain then follow the steps below.

**Soap & Water** - Remove ordinary dirt and smudges with a mild soap and water solution using a soft cloth or towel. Rinse with fresh water and wipe dry.

**Non-abrasive Cleaners** - If residue remains, use a straight application of the following cleaners: Fantastik or 409 and gently clean with a soft cloth. Rinse with fresh water and wipe dry.

**Isopropyl Alcohol** - More stubborn stains may be eliminated using a cotton cloth soaked in 70-91% isopropyl (rubbing) alcohol. Wipe without spreading stain to surrounding area. A second application should be applied with vigorous rubbing in a circular motion. For highly textured material, a soft brush is recommended to clean valleys and crevices. Rinse with fresh water and wipe dry.

**BC: Bleach Cleanable** - 1 parts bleach, 9 parts water = 10% bleach, 100% water solution. Do not clean / disinfect fabric for longer than 10

minutes. Always rinse promptly with clean water. Failure to do so will

void any and all warranties.

[Additional cleaning details at www.mayerfabrics.com](http://www.mayerfabrics.com)

© Mayer Fabrics 2025

Specifications are subject to change. Current specifications are available at [mayerfabrics.com](http://mayerfabrics.com)  
Mayer Fabrics | 500 S. Kitley Ave, Indianapolis, IN 46219

TF. 800.428.4415

T. 317.267.2626

F. 317.267.2629