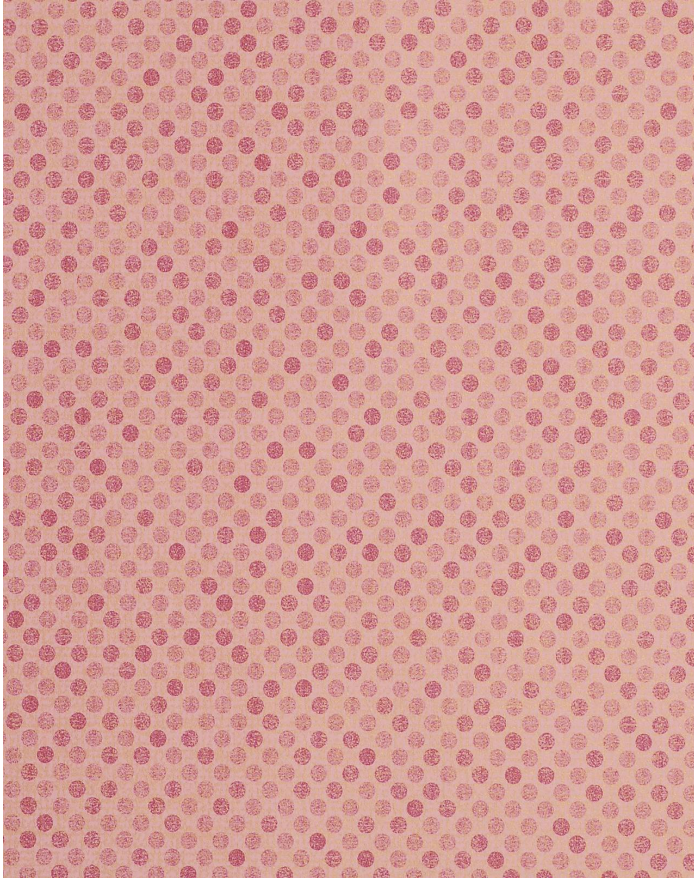


MICRO DOT RASPBERRY

MD-001

MAYER FABRICS



CATEGORY

Seating

PROPERTIES



CONTENT

100% Vinyl, backing content unavailable

FINISH

Soil & Stain Resistant Top Coat with Ink Resistant Technology

WIDTH

54"

WEIGHT

28

SHOWN RAILROADED

No

DIRECTIONALITY

Yes

ROLL LENGTH

40

VISUAL REPEAT

0.25, 0.25

BREAKING STRENGTH

Warp: 85.0 lbs. / Fill: 75.0 lbs.

SEAM SLIPPAGE

Warp: lbs. / Fill: lbs.

ABRASION RESISTANCE

Passes 1,300,000 Double Rubs* (Wyzenbeek/Cotton Duck) *

* Abrasion test results exceeding ACT Performance Guidelines are not an indicator of product lifespan.

PILLING RESISTANCE

Class: N/A

COLORFASTNESS TO CROCKING

Dry: Class 4 min / Wet: Class 4 min

COLORFASTNESS TO LIGHT

650 hours

APPLICATION

Atrium, Indoor, Marine, Outdoor

CLEANING

WS: Water/Solvent Cleaner - Spot clean with a mild solvent, an upholstery shampoo, or the foam from a mild detergent.

When using a solvent or dry cleaning product, follow instructions carefully and clean only in a well-ventilated room. Avoid any product that contains carbon tetrachloride or other toxic materials. With either method, pretest a small area before proceeding. Always rinse promptly with clean water.

CFC: Coated Fabrics Cleaning - When a spill/stain occurs wipe immediately with a clean dry cloth. Carefully remove the majority of the stain then follow the steps below.

Soap & Water - Remove ordinary dirt and smudges with a mild soap and water solution using a soft cloth or towel. Rinse with fresh water and wipe dry.

Non-abrasive Cleaners - If residue remains, use a straight application of the following cleaners: Fantastik or 409 and gently clean with a soft cloth. Rinse with fresh water and wipe dry.

Isopropyl Alcohol - More stubborn stains may be eliminated using a cotton cloth soaked in 70-91% isopropyl (rubbing) alcohol. Wipe without spreading stain to surrounding area. A second application should be applied with vigorous rubbing in a circular motion. For highly textured material, a soft brush is recommended to clean valleys and crevices. Rinse with fresh water and wipe dry.

BC: Bleach Cleanable - 1 parts bleach, 9 parts water = 10% bleach, 20% water solution. Do not clean / disinfect fabric for longer than 10

minutes. Always rinse promptly with the bleach solution. Failure to do so will

void any and all warranties.

[Additional cleaning details at www.mayerfabrics.com](http://www.mayerfabrics.com)

© Mayer Fabrics 2025

Specifications are subject to change. Current specifications are available at mayerfabrics.com
Mayer Fabrics | 500 S. Kitley Ave, Indianapolis, IN 46219

TF. 800.428.4415

T. 317.267.2626

F. 317.267.2629