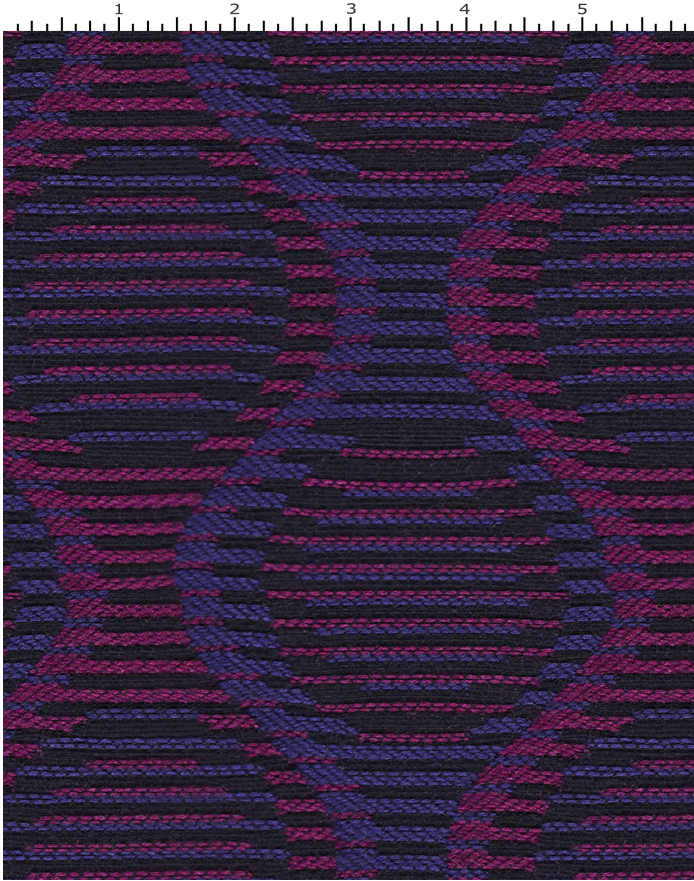


GEISHA CHRYSANTHEMUM

LC907-005

MAYER FABRICS



CATEGORY
Seating

PROPERTIES
🔥👉☀️☆☆☆

CONTENT
85% Wool/15% Nylon

FINISH
None

WIDTH
54"

WEIGHT
22.19

SHOWN RAILROADED
No

DIRECTIONALITY
Yes

ROLL LENGTH
50 yards

VISUAL REPEAT
4.5, 5.06

BREAKING STRENGTH
Warp: 228.0 lbs. / Fill: 282.0 lbs.

SEAM SLIPPAGE
Warp: 111.0 lbs. / Fill: 84.0 lbs.

ABRASION RESISTANCE
Passes 40,000 Cycles *

* Abrasion test results exceeding ACT Performance Guidelines are not an indicator of product lifespan.

PILLING RESISTANCE
Class: 4

COLORFASTNESS TO CROCKING
Dry: Class 4 min / Wet: Class 4

COLORFASTNESS TO LIGHT
40 hours

CLEANING

S: Solvent Cleaner - Spot clean, using a mild water-free solvent or dry cleaning product. Clean only in a well-ventilated room and avoid any product containing carbon tetrachloride or other toxic materials. Pretest a small area before proceeding. Always rinse promptly with clean water.

[Additional cleaning details at www.mayerfabrics.com](http://www.mayerfabrics.com)