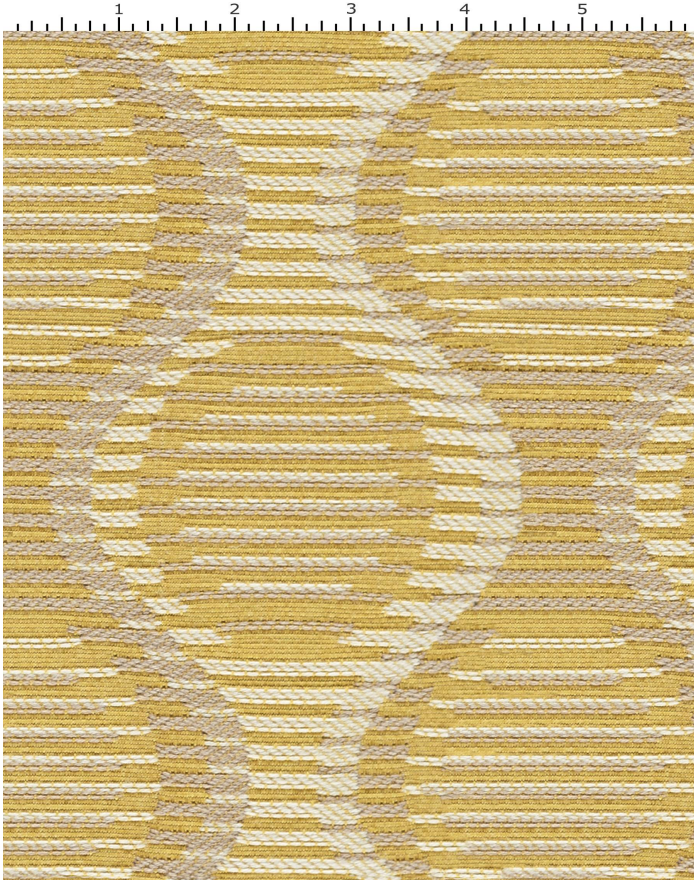


# GEISHA JAPONICA

LC907-002

# MAYER FABRICS



## CATEGORY

Seating

## PROPERTIES



## CONTENT

85% Wool/15% Nylon

## FINISH

None

## WIDTH

54"

## WEIGHT

22.19

## SHOWN RAILROADED

No

## DIRECTIONALITY

Yes

## ROLL LENGTH

50

## VISUAL REPEAT

4.5, 5.06

## BREAKING STRENGTH

Warp: 228.0 lbs. / Fill: 282.0 lbs.

## SEAM SLIPPAGE

Warp: 111.0 lbs. / Fill: 84.0 lbs.

## ABRASION RESISTANCE

Passes 40,000 Cycles (Martindale/Cotton Duck) \*

\* Abrasion test results exceeding ACT Performance Guidelines are not an indicator of product lifespan.

## PILLING RESISTANCE

Class: 4

## COLORFASTNESS TO CROCKING

Dry: Class 4 min / Wet: Class 4

## COLORFASTNESS TO LIGHT

40 hours

## CLEANING

**S: Solvent Cleaner** - Spot clean, using a mild water-free solvent or dry cleaning product. Clean only in a well-ventilated room and avoid any product containing carbon tetrachloride or other toxic materials. Pretest a small area before proceeding. Always rinse promptly with clean water.

[Additional cleaning details at www.mayerfabrics.com](http://www.mayerfabrics.com)