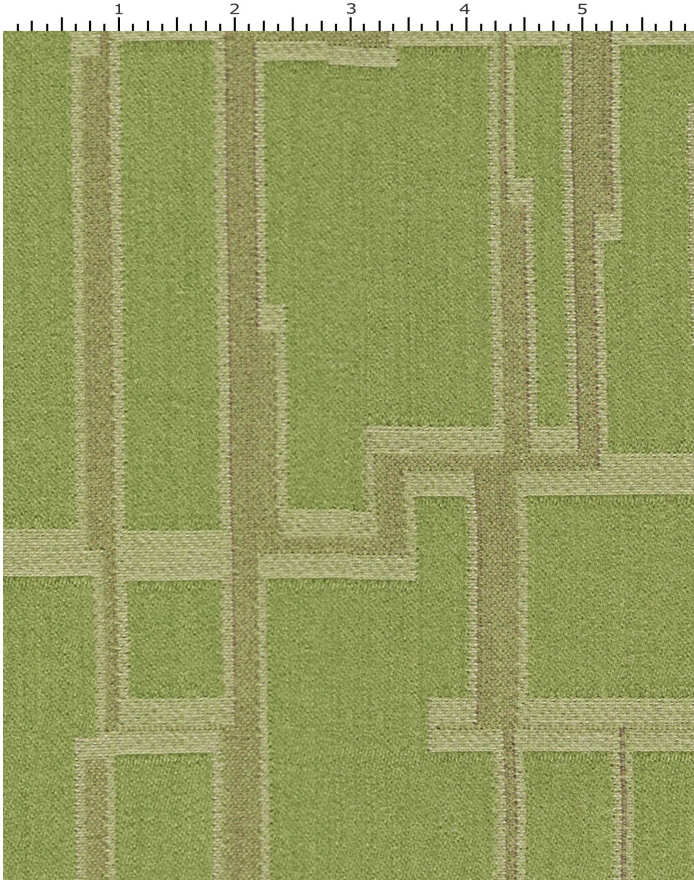


KATAGAMI ARTEMISIA

LC904-003

MAYER FABRICS



CATEGORY
Seating

PROPERTIES
🔥👉☀️☆☆☆

CONTENT
85% Wool/15% Nylon

FINISH
None

WIDTH
54"

WEIGHT
16.35

SHOWN RAILROADED
No

DIRECTIONALITY
Yes

ROLL LENGTH
50

VISUAL REPEAT
13.5, 31.94

BREAKING STRENGTH
Warp: 223.0 lbs. / Fill: 164.0 lbs.

SEAM SLIPPAGE
Warp: 80.0 lbs. / Fill: 87.0 lbs.

ABRASION RESISTANCE
Exceeds 60,000 Cycles (Martindale/Cotton Duck) *
* Abrasion test results exceeding ACT Performance Guidelines are not an indicator of product lifespan.

PILLING RESISTANCE
Class: 5

COLORFASTNESS TO CROCKING
Dry: Class 4 min / Wet: Class 4 min

COLORFASTNESS TO LIGHT
40 hours

CLEANING

S: Solvent Cleaner - Spot clean, using a mild water-free solvent or dry cleaning product. Clean only in a well-ventilated room and avoid any product containing carbon tetrachloride or other toxic materials. Pretest a small area before proceeding. Always rinse promptly with clean water.

[Additional cleaning details at www.mayerfabrics.com](http://www.mayerfabrics.com)