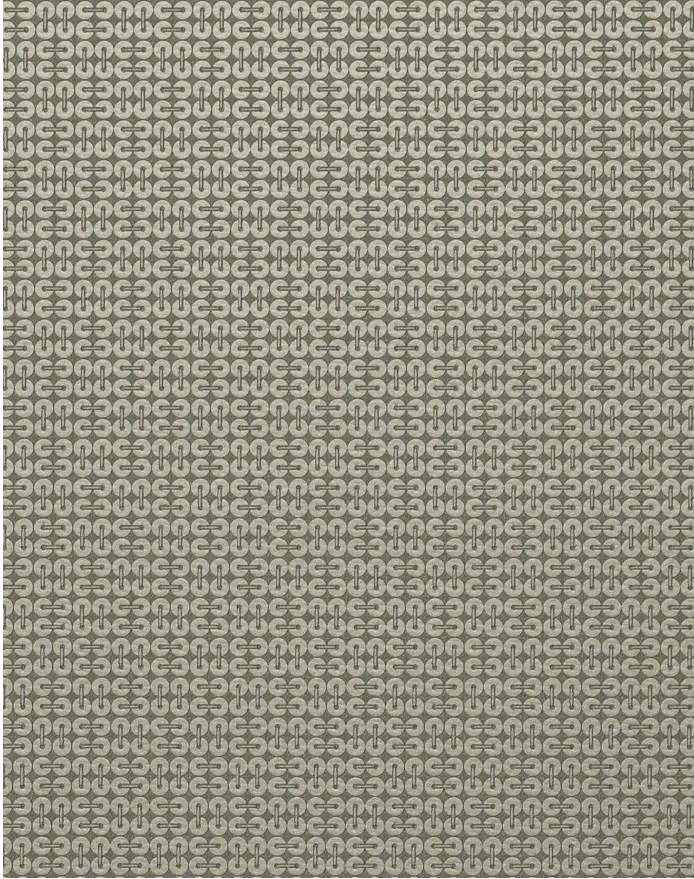


# INTERLOCHEN HEMLOCK

## IN-013

# MAYER FABRICS



### CATEGORY

Seating

### PROPERTIES



### CONTENT

81% Vinyl face, 19% Polyester backing

### FINISH

Soil & Stain Resistant Top Coat with Ink Resistant Technology

### WIDTH

54"

### WEIGHT

30

### SHOWN RAILROADED

No

### DIRECTIONALITY

Yes

### ROLL LENGTH

30 yards

### VISUAL REPEAT

0.625, 0.625

### BREAKING STRENGTH

Warp: 121.0 lbs. / Fill: 72.0 lbs.

### SEAM SLIPPAGE

Warp: lbs. / Fill: lbs.

### ABRASION RESISTANCE

Exceeds 1,155,000 Double Rubs (Wyzenbeek) \*

\* Abrasion test results exceeding ACT Performance Guidelines are not an indicator of product lifespan.

### PILLING RESISTANCE

Class: n/a

### COLORFASTNESS TO CROCKING

Dry: Class 4 min / Wet: Class 4 min

### COLORFASTNESS TO LIGHT

1000 hours

### APPLICATION

Atrium, Indoor

### CLEANING

**WS: Water/Solvent Cleaner** - Spot clean with a mild solvent, an upholstery shampoo, or the foam from a mild detergent.

When using a solvent or dry cleaning product, follow instructions carefully and clean only in a well-ventilated room. Avoid any product that contains carbon tetrachloride or other toxic materials. With either method, pretest a small area before proceeding. Always rinse promptly with clean water.

**CFC: Coated Fabrics Cleaning** - When a spill/stain occurs wipe immediately with a clean dry cloth. Carefully remove the majority of the stain then follow the steps below.

**Soap & Water** - Remove ordinary dirt and smudges with a mild soap and water solution using a soft cloth or towel. Rinse with fresh water and wipe dry.

**Non-abrasive Cleaners** - If residue remains, use a straight application of the following cleaners: Fantastik or 409 and gently clean with a soft cloth. Rinse with fresh water and wipe dry.

**Isopropyl Alcohol** - More stubborn stains may be eliminated using a cotton cloth soaked in 70-91% isopropyl (rubbing) alcohol. Wipe without spreading stain to surrounding area. A second application should be applied with vigorous rubbing in a circular motion. For highly textured material, a soft brush is recommended to clean valleys and crevices. Rinse with fresh water and wipe dry.

**BC: Bleach Cleanable** - 1 parts bleach, 9 parts water = 10% bleach, 10% water solution. Do not clean / disinfect fabric for longer than 10 minutes. Rinse promptly with clean water. Failure to do so will void warranty.

## PERMABLOK<sup>3</sup>

### ADVANCED VINYL PROTECTION

[Additional cleaning details at www.mayerfabrics.com](http://www.mayerfabrics.com)

© Mayer Fabrics 2024

Specifications are subject to change. Current specifications are available at [mayerfabrics.com](http://mayerfabrics.com)  
Mayer Fabrics | 500 S. Kitley Ave, Indianapolis, IN 46219

TF. 800.428.4415  
T. 317.267.2626  
F. 317.267.2629