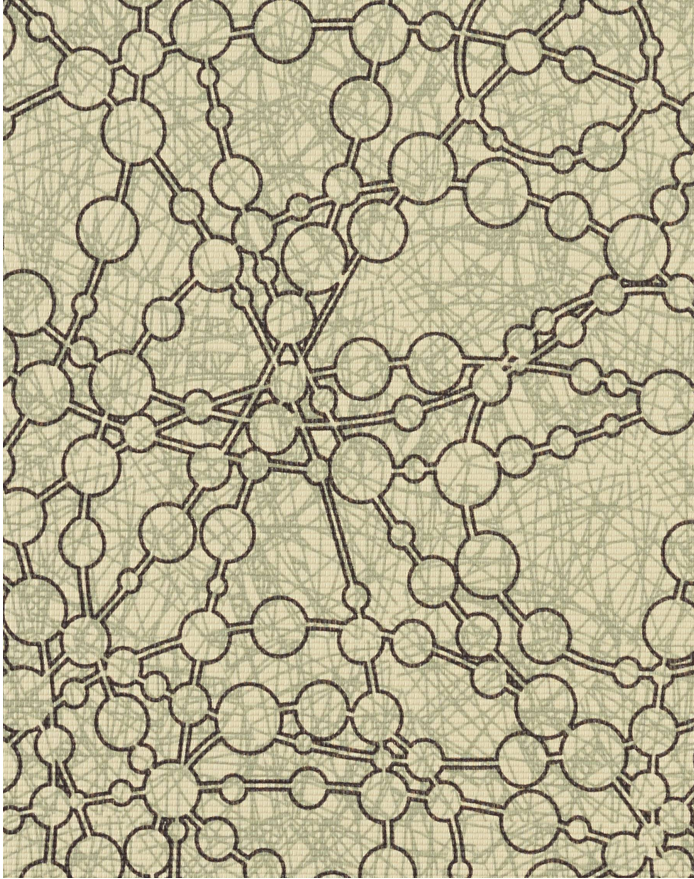


# ATOMIC ALMOND

AM-007

# MAYER FABRICS



## CATEGORY

Seating

## PROPERTIES



## CONTENT

75% Vinyl - Phthalate Free face, 25% Polyester backing

## FINISH

Soil & Stain Resistant Topcoat - Ink  
Resistant with Anti-Bacterial/Microbial

## WIDTH

54"

## WEIGHT

30.75

## SHOWN RAILROADED

No

## DIRECTIONALITY

Yes

## ROLL LENGTH

30 yards

## VISUAL REPEAT

8.875, 9.1875

## BREAKING STRENGTH

Warp: 115.0 lbs. / Fill: 80.0 lbs.

## SEAM SLIPPAGE

Warp: 118.0 lbs. / Fill: 116.0 lbs.

## ABRASION RESISTANCE

Exceeds 100,000 Double Rubs (Wyzenbeek) \*

\* Abrasion test results exceeding ACT Performance Guidelines are not an indicator of product lifespan.

## PILLING RESISTANCE

Class: n/a

## COLORFASTNESS TO CROCKING

Dry: Class 4 min / Wet: Class 4 min

## COLORFASTNESS TO LIGHT

200 hours

## CLEANING

**W: Water-Based Cleaner** - Spot clean, using the foam only from a water-based cleaning agent, such as a mild detergent or non-solvent upholstery shampoo product. Apply foam with a soft brush in a circular motion. Always rinse promptly with clean water. Vacuum when dry. Pretest small area before proceeding.

**CFC: Coated Fabrics Cleaning** - When a spill/stain occurs wipe immediately with a clean dry cloth. Carefully remove the majority of the stain then follow the steps below.

**Soap & Water** - Remove ordinary dirt and smudges with a mild soap and water solution using a soft cloth or towel. Rinse with fresh water and wipe dry.

**Non-abrasive Cleaners** - If residue remains, use a straight application of the following cleaners: Fantastik or 409 and gently clean with a soft cloth. Rinse with fresh water and wipe dry.

**Isopropyl Alcohol** - More stubborn stains may be eliminated using a cotton cloth soaked in 70-91% isopropyl (rubbing) alcohol. Wipe without spreading stain to surrounding area. A second application should be applied with vigorous rubbing in a circular motion. For highly textured material, a soft brush is recommended to clean valleys and crevices. Rinse with fresh water and wipe dry.

**BC: Bleach Cleanable** - 1 parts bleach, 9 parts water = 10% bleach, 90% water solution. Do not clean / disinfect fabric for longer than 10 minutes using the 10% bleach solution. Always rinse promptly with clean water after applying the bleach solution. Failure to do so will void any and all warranties.

[Additional cleaning details at www.mayerfabrics.com](http://www.mayerfabrics.com)

© Mayer Fabrics 2024

Specifications are subject to change. Current specifications are available at [mayerfabrics.com](http://mayerfabrics.com)  
Mayer Fabrics | 500 S. Kitley Ave, Indianapolis, IN 46219

TF. 800.428.4415  
T. 317.267.2626  
F. 317.267.2629