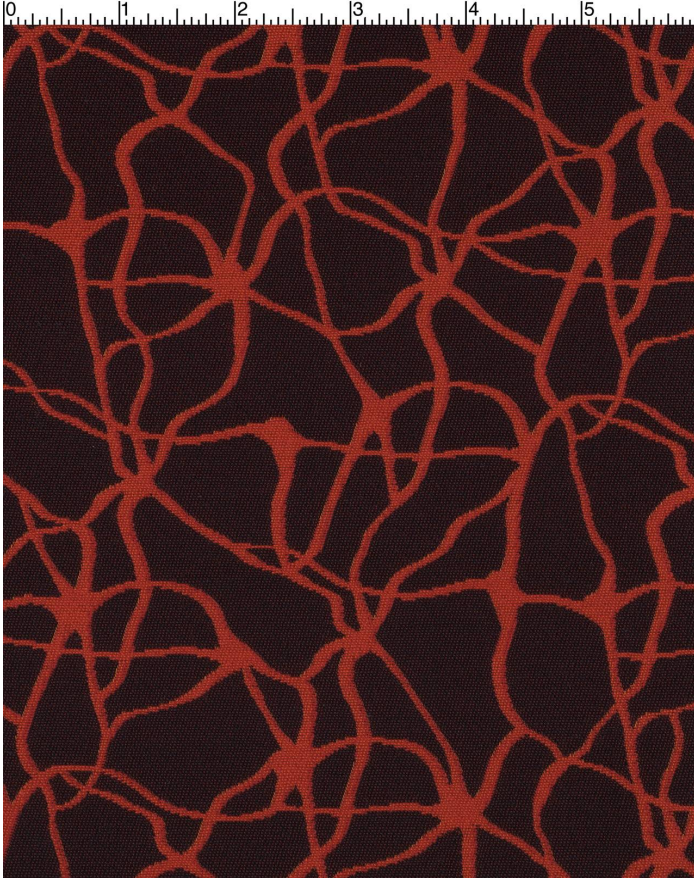


# SYNAPSE MALBEC

891-008

# MAYER FABRICS



**CATEGORY**  
Seating

**PROPERTIES**

**CONTENT**  
72% Cotton/28% Nylon

**FINISH**  
INCASE(TM) with Antimicrobial Silver Ion Technology

**WIDTH**  
54"

**WEIGHT**  
18.56

**SHOWN RAILROADED**  
No

**DIRECTIONALITY**  
Yes

**ROLL LENGTH**  
60

**VISUAL REPEAT**  
9.0, 6.0 Random Match

**BREAKING STRENGTH**  
Warp: 342.0 lbs. / Fill: 305.0 lbs.

**SEAM SLIPPAGE**  
Warp: 80.0 lbs. / Fill: 109.0 lbs.

**ABRASION RESISTANCE**  
Exceeds 100,000 Double Rubs\* (Wyzenbeek/Cotton Duck) \*  
\* Abrasion test results exceeding ACT Performance Guidelines are not an indicator of product lifespan.

**PILLING RESISTANCE**  
Class: 3

**COLORFASTNESS TO CROCKING**  
Dry: Class 4 min / Wet: Class 4min

**COLORFASTNESS TO LIGHT**  
60 hours

## CLEANING

**S: Solvent Cleaner** - Spot clean, using a mild water-free solvent or dry cleaning product. Clean only in a well-ventilated room and avoid any product containing carbon tetrachloride or other toxic materials. Pretest a small area before proceeding. Always rinse promptly with clean water.

[Additional cleaning details at www.mayerfabrics.com](http://www.mayerfabrics.com)



© Mayer Fabrics 2025

Specifications are subject to change. Current specifications are available at [mayerfabrics.com](http://mayerfabrics.com)  
Mayer Fabrics | 500 S. Kitley Ave, Indianapolis, IN 46219

TF. 800.428.4415  
T. 317.267.2626  
F. 317.267.2629