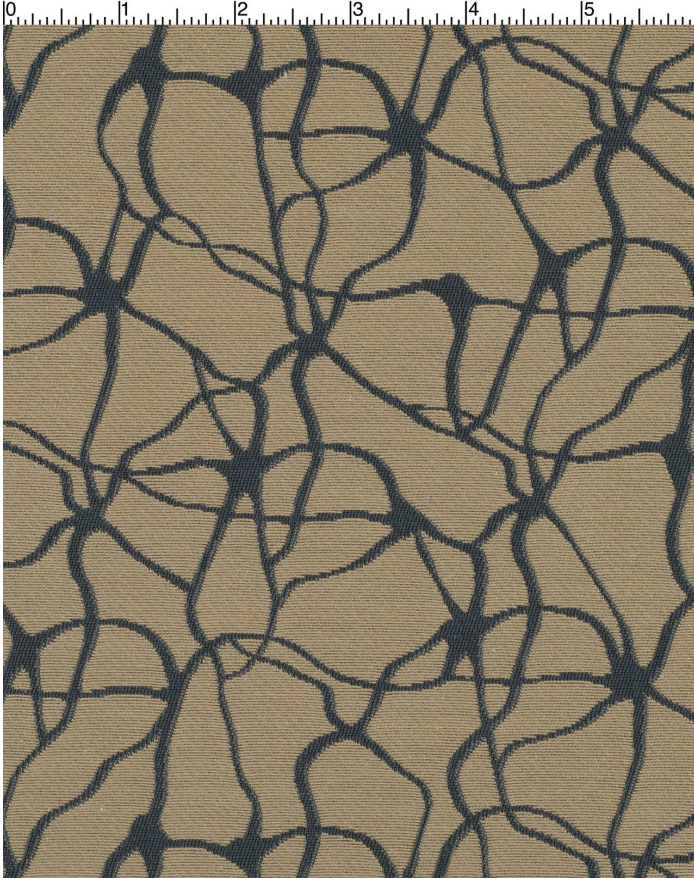


SYNAPSE SANDSTONE

891-000

MAYER FABRICS



CATEGORY
Seating

PROPERTIES

CONTENT
72% Cotton/28% Nylon

FINISH
INCASE(TM) with Antimicrobial Silver Ion Technology

WIDTH
54"

WEIGHT
18.56

SHOWN RAILROADED
No

DIRECTIONALITY
Yes

ROLL LENGTH
60

VISUAL REPEAT
9.0, 6.0 Random Match

BREAKING STRENGTH
Warp: 342.0 lbs. / Fill: 305.0 lbs.

SEAM SLIPPAGE
Warp: 80.0 lbs. / Fill: 109.0 lbs.

ABRASION RESISTANCE
Exceeds 100,000 Double Rubs* (Wyzenbeek/Cotton Duck) *
* Abrasion test results exceeding ACT Performance Guidelines are not an indicator of product lifespan.

PILLING RESISTANCE
Class: 3

COLORFASTNESS TO CROCKING
Dry: Class 4 min / Wet: Class 4min

COLORFASTNESS TO LIGHT
60 hours

CLEANING

S: Solvent Cleaner - Spot clean, using a mild water-free solvent or dry cleaning product. Clean only in a well-ventilated room and avoid any product containing carbon tetrachloride or other toxic materials. Pretest a small area before proceeding. Always rinse promptly with clean water.

[Additional cleaning details at www.mayerfabrics.com](http://www.mayerfabrics.com)



© Mayer Fabrics 2025

Specifications are subject to change. Current specifications are available at mayerfabrics.com
Mayer Fabrics | 500 S. Kitley Ave, Indianapolis, IN 46219

TF. 800.428.4415
T. 317.267.2626
F. 317.267.2629