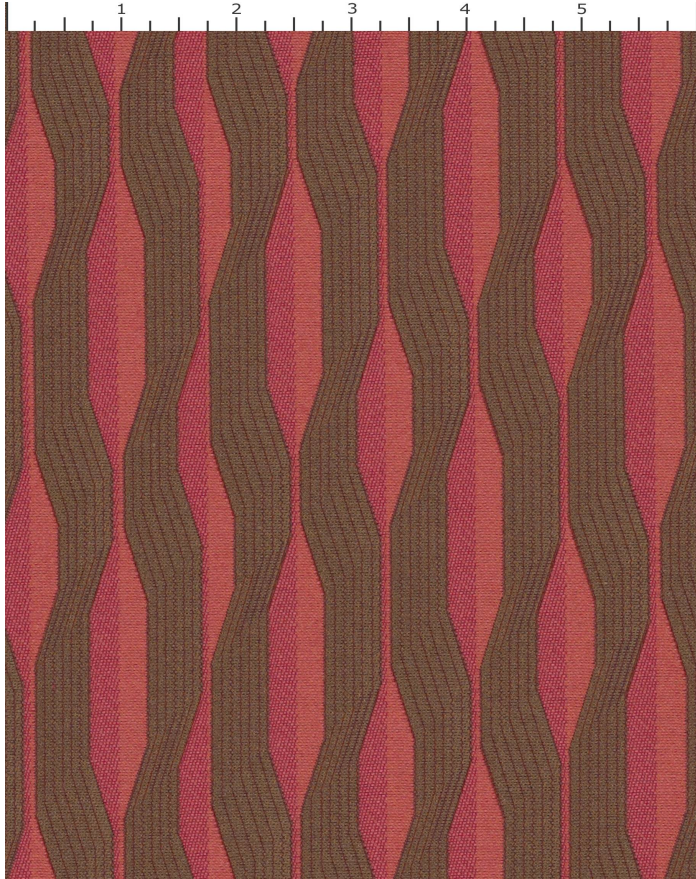


# ASCENSION ROUGE

888-001

# MAYER FABRICS



**CATEGORY**  
Seating

**PROPERTIES**

**CONTENT**  
72% Cotton/28% Nylon

**FINISH**  
INCASE(TM) with Antimicrobial Silver Ion Technology

**WIDTH**  
54"

**WEIGHT**  
18.56

**SHOWN RAILROADED**  
No

**DIRECTIONALITY**  
Yes

**ROLL LENGTH**  
60 yards

**VISUAL REPEAT**  
13.5, 5.5 Random Match

**BREAKING STRENGTH**  
Warp: 308.0 lbs. / Fill: 242.0 lbs.

**SEAM SLIPPAGE**  
Warp: 75.0 lbs. / Fill: 104.0 lbs.

**ABRASION RESISTANCE**  
Passes 90,000 Double Rubs (Wyzenbeek) \*  
\* Abrasion test results exceeding ACT Performance Guidelines are not an indicator of product lifespan.

**PILLING RESISTANCE**  
Class: 3.5

**COLORFASTNESS TO CROCKING**  
Dry: Class 4 min / Wet: Class 4 min

**COLORFASTNESS TO LIGHT**  
60 hours

## CLEANING

**S: Solvent Cleaner** - Spot clean, using a mild water-free solvent or dry cleaning product. Clean only in a well-ventilated room and avoid any product containing carbon tetrachloride or other toxic materials. Pretest a small area before proceeding. Always rinse promptly with clean water.

[Additional cleaning details at www.mayerfabrics.com](http://www.mayerfabrics.com)



© Mayer Fabrics 2024

Specifications are subject to change. Current specifications are available at [mayerfabrics.com](http://mayerfabrics.com)  
Mayer Fabrics | 500 S. Kitley Ave, Indianapolis, IN 46219

TF. 800.428.4415  
T. 317.267.2626  
F. 317.267.2629