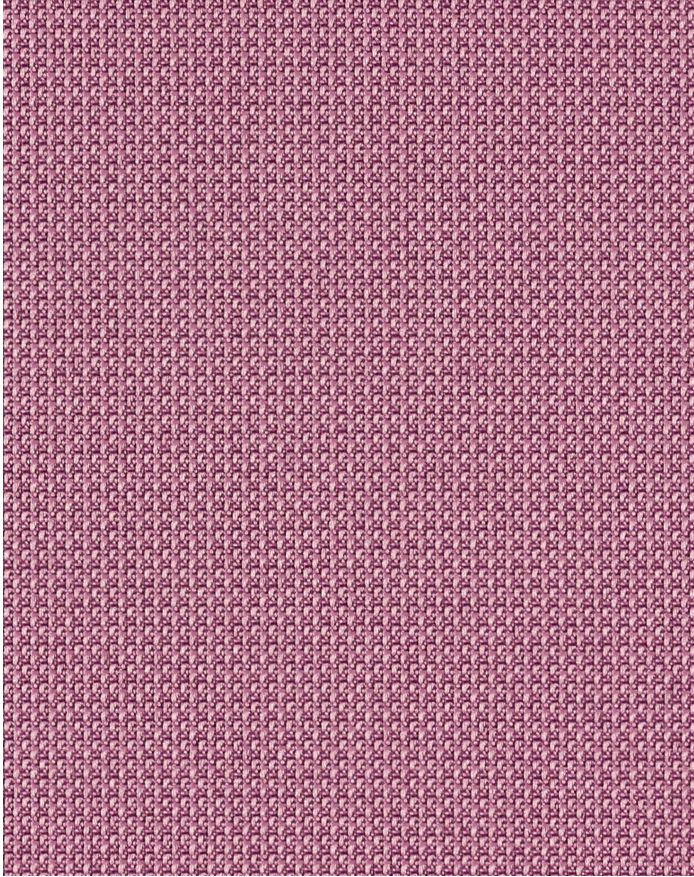


# OPTIC 10 MULBERRY

424-005

# MAYER FABRICS



## CATEGORY

Seating/Panel

## PROPERTIES



## CONTENT

83% Post-Consumer Recycled Polyester/17% Polyester

## FINISH

Stain Repellent

## WIDTH

54"

## WEIGHT

16.5

## SHOWN RAILROADED

No

## DIRECTIONALITY

Yes

## ROLL LENGTH

50-60 yards

## VISUAL REPEAT

0.33, 0.2

## BREAKING STRENGTH

Warp: 359.0 lbs. / Fill: 315.0 lbs.

## SEAM SLIPPAGE

Warp: 60.0 lbs. / Fill: 53.0 lbs.

## ABRASION RESISTANCE

Passes 185,000 Double Rubs (Wyzenbeek) \*

\* Abrasion test results exceeding ACT Performance Guidelines are not an indicator of product lifespan.

## PILLING RESISTANCE

Class: 4

## COLORFASTNESS TO CROCKING

Dry: Class 4 / Wet: Class 4

## COLORFASTNESS TO LIGHT

40 hours

## APPLICATION

Indoor

## CLEANING

**WS: Water/Solvent Cleaner** - Spot clean with a mild solvent, an upholstery shampoo, or the foam from a mild detergent. When using a solvent or dry cleaning product, follow instructions carefully and clean only in a well-ventilated room. Avoid any product that contains carbon tetrachloride or other toxic materials. With either method, pretest a small area before proceeding. Always rinse promptly with clean water.

[Additional cleaning details at www.mayerfabrics.com](http://www.mayerfabrics.com)

