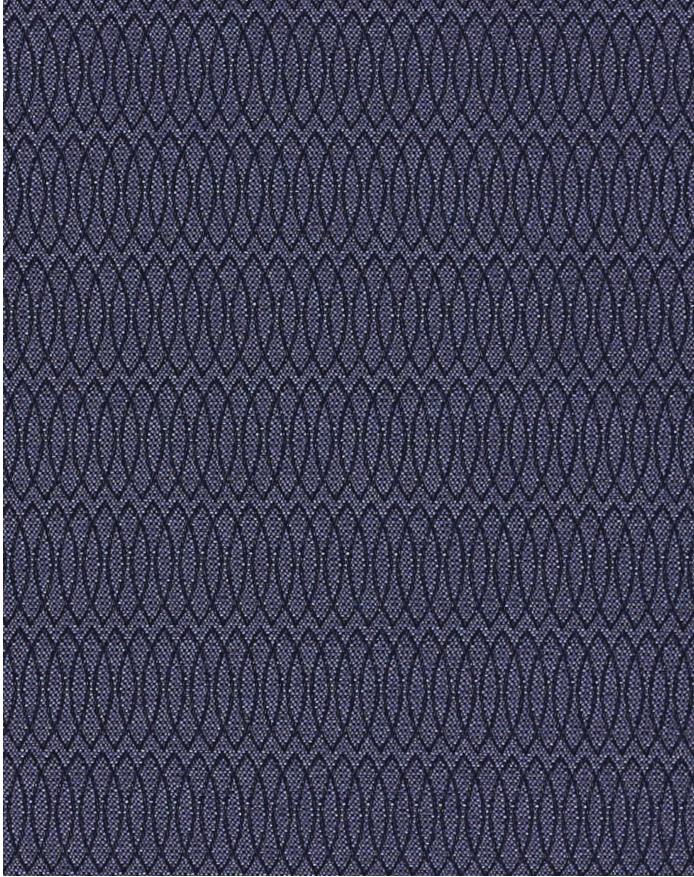


REVERB VIOLET

421-005

MAYER FABRICS



CATEGORY
Seating/Panel

PROPERTIES

CONTENT
100% Recycled Polyester (48% Pre-/52% Repreve Post-Consumer)/52% Repreve Polyester/48% Recycled Polyester

**ADDITIONAL FINISHING AVAILABLE
(CHECK FOR PRICING)**
Nano-Tex, NanoGuard

FINISH
None

WIDTH
54"

WEIGHT
9.3

SHOWN RAILROADED
No

DIRECTIONALITY
Yes

ROLL LENGTH
56

VISUAL REPEAT
0.375, 1.875

BREAKING STRENGTH
Warp: 250.0 lbs. / Fill: 180.0 lbs.

SEAM SLIPPAGE
Warp: 70.0 lbs. / Fill: 50.0 lbs.

ABRASION RESISTANCE
Exceeds 100,000 Double Rubs* (Wyzenbeek/Cotton Duck) *
* Abrasion test results exceeding ACT Performance Guidelines are not an indicator of product lifespan.

PILLING RESISTANCE
Class: 4 min

COLORFASTNESS TO CROCKING
Dry: Class 4 min / Wet: Class 3 min

COLORFASTNESS TO LIGHT
60 hours

APPLICATION
Indoor

CLEANING

WS: Water/Solvent Cleaner - Spot clean with a mild solvent, an upholstery shampoo, or the foam from a mild detergent. When using a solvent or dry cleaning product, follow instructions carefully and clean only in a well-ventilated room. Avoid any product that contains carbon tetrachloride or other toxic materials. With either method, pretest a small area before proceeding. Always rinse promptly with clean water.

BC: Bleach Cleanable - 1 parts bleach, 9 parts water = 10% bleach, 90% water solution. Do not clean / disinfect fabric for longer than 10 minutes using the 10% bleach solution. Always rinse promptly with clean water after applying the bleach solution. Failure to do so will void any and all warranties.

[Additional cleaning details at www.mayerfabrics.com](http://www.mayerfabrics.com)



© Mayer Fabrics 2025

Specifications are subject to change. Current specifications are available at mayerfabrics.com
Mayer Fabrics | 500 S. Kitley Ave, Indianapolis, IN 46219

TF. 800.428.4415
T. 317.267.2626
F. 317.267.2629