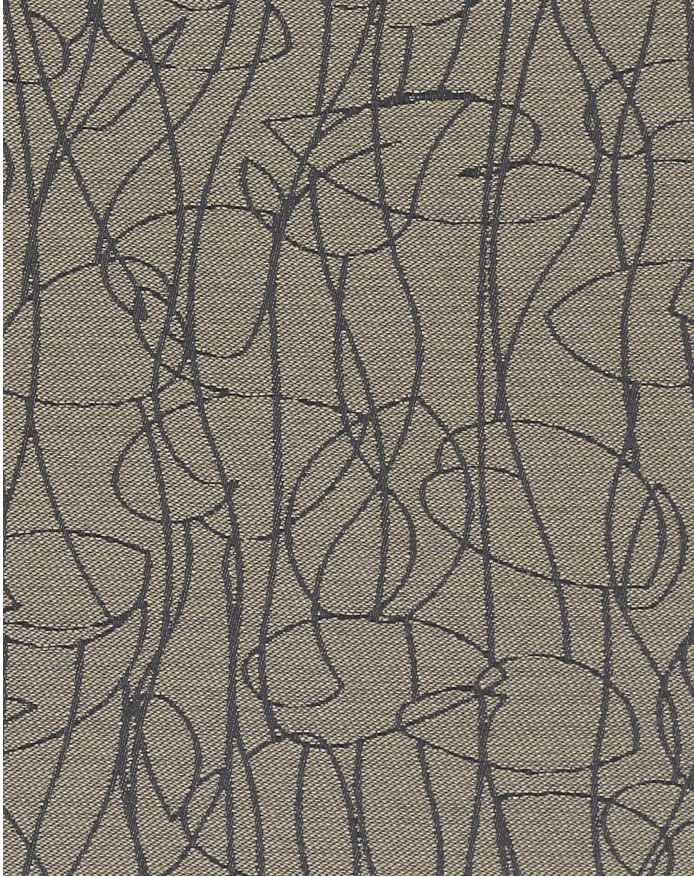


# MEANDER GREYSTONE

419-016

# MAYER FABRICS



## CATEGORY

Seating

## PROPERTIES



## CONTENT

100% Recycled Polyester (52% Pre-/48% Repreve Post-Consumer)

## ADDITIONAL FINISHING AVAILABLE (CHECK FOR PRICING)

Nano-Tex, NanoGuard

## FINISH

None

## WIDTH

54"

## WEIGHT

9.6

## SHOWN RAILROADED

No

## DIRECTIONALITY

Yes

## ROLL LENGTH

56 yards

## VISUAL REPEAT

14.3, 9.5 Random Match

## BREAKING STRENGTH

Warp: 250.0 lbs. / Fill: 125.0 lbs.

## SEAM SLIPPAGE

Warp: 60.0 lbs. / Fill: 60.0 lbs.

## ABRASION RESISTANCE

Passes 75,000 Double Rubs (Wyzenbeek) \*

\* Abrasion test results exceeding ACT Performance Guidelines are not an indicator of product lifespan.

## PILLING RESISTANCE

Class: 4 min

## COLORFASTNESS TO CROCKING

Dry: Class 4 min / Wet: Class 3 min

## COLORFASTNESS TO LIGHT

60 hours

## APPLICATION

Indoor

## CLEANING

**WS: Water/Solvent Cleaner** - Spot clean with a mild solvent, an upholstery shampoo, or the foam from a mild detergent. When using a solvent or dry cleaning product, follow instructions carefully and clean only in a well-ventilated room. Avoid any product that contains carbon tetrachloride or other toxic materials. With either method, pretest a small area before proceeding. Always rinse promptly with clean water.

**BC: Bleach Cleanable** - 1 parts bleach, 9 parts water = 10% bleach, 90% water solution. Do not clean / disinfect fabric for longer than 10 minutes using the 10% bleach solution. Always rinse promptly with clean water after applying the bleach solution. Failure to do so will void any and all warranties.

[Additional cleaning details at www.mayerfabrics.com](http://www.mayerfabrics.com)



facts<sup>SM</sup>  
Silver

REPREVE<sup>®</sup>  
IT'S WHAT'S IN IT<sup>™</sup>