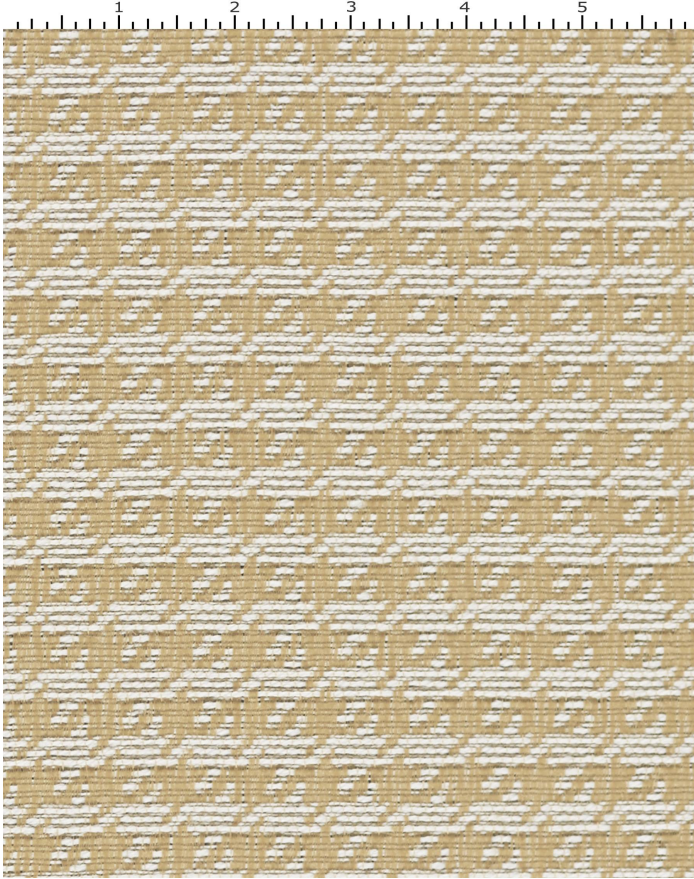


# SHERLOCK CAMEL

397-002

# MAYER FABRICS



**CATEGORY**  
Seating

**PROPERTIES**  
🔥🌞🌟🌟🌟

**CONTENT**  
100% Polyester

**ADDITIONAL FINISHING AVAILABLE  
(CHECK FOR PRICING)**  
Nano-Tex, NanoGuard

**FINISH**  
Stain Repellent

**WIDTH**  
54"

**WEIGHT**  
14.72

**SHOWN RAILROADED**  
No

**DIRECTIONALITY**  
Yes

**ROLL LENGTH**  
55

**VISUAL REPEAT**  
0.625, 1.125

**BREAKING STRENGTH**  
Warp: 163.0 lbs. / Fill: 253.0 lbs.

**SEAM SLIPPAGE**  
Warp: 43.0 lbs. / Fill: 77.0 lbs.

**ABRASION RESISTANCE**  
Passes 51,000 Double Rubs (Wyzenbeek/Cotton Duck) \*  
\* Abrasion test results exceeding ACT Performance Guidelines are not an indicator of product lifespan.

**PILLING RESISTANCE**  
Class: 5

**COLORFASTNESS TO CROCKING**  
Dry: Class 4 min / Wet: Class 3 min

**COLORFASTNESS TO LIGHT**  
40 hours

## CLEANING

**WS: Water/Solvent Cleaner** - Spot clean with a mild solvent, an upholstery shampoo, or the foam from a mild detergent. When using a solvent or dry cleaning product, follow instructions carefully and clean only in a well-ventilated room. Avoid any product that contains carbon tetrachloride or other toxic materials. With either method, pretest a small area before proceeding. Always rinse promptly with clean water.

**BC: Bleach Cleanable** - 1 parts bleach, 9 parts water = 10% bleach, 90% water solution. Do not clean / disinfect fabric for longer than 10 minutes using the 10% bleach solution. Always rinse promptly with clean water after applying the bleach solution. Failure to do so will void any and all warranties.

[Additional cleaning details at www.mayerfabrics.com](http://www.mayerfabrics.com)