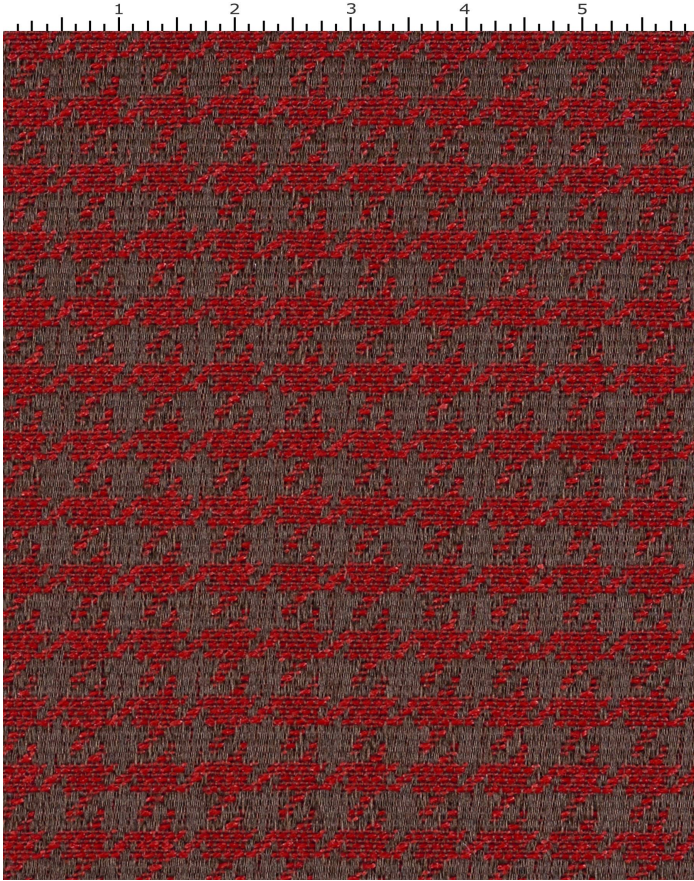


SHERLOCK ROUGE

397-001

MAYER FABRICS



CATEGORY
Seating

PROPERTIES
🔥👉☀️☆☆

CONTENT
100% Polyester

**ADDITIONAL FINISHING AVAILABLE
(CHECK FOR PRICING)**
Nano-Tex, NanoGuard

FINISH
Stain Repellent

WIDTH
54"

WEIGHT
14.72

SHOWN RAILROADED
No

DIRECTIONALITY
Yes

ROLL LENGTH
55

VISUAL REPEAT
0.625, 1.125

BREAKING STRENGTH
Warp: 163.0 lbs. / Fill: 253.0 lbs.

SEAM SLIPPAGE
Warp: 43.0 lbs. / Fill: 77.0 lbs.

ABRASION RESISTANCE
Passes 51,000 Double Rubs (Wyzenbeek/Cotton Duck) *
* Abrasion test results exceeding ACT Performance Guidelines are not an indicator of product lifespan.

PILLING RESISTANCE
Class: 5

COLORFASTNESS TO CROCKING
Dry: Class 4 min / Wet: Class 3 min

COLORFASTNESS TO LIGHT
40 hours

CLEANING

WS: Water/Solvent Cleaner - Spot clean with a mild solvent, an upholstery shampoo, or the foam from a mild detergent. When using a solvent or dry cleaning product, follow instructions carefully and clean only in a well-ventilated room. Avoid any product that contains carbon tetrachloride or other toxic materials. With either method, pretest a small area before proceeding. Always rinse promptly with clean water.

BC: Bleach Cleanable - 1 parts bleach, 9 parts water = 10% bleach, 90% water solution. Do not clean / disinfect fabric for longer than 10 minutes using the 10% bleach solution. Always rinse promptly with clean water after applying the bleach solution. Failure to do so will void any and all warranties.

[Additional cleaning details at www.mayerfabrics.com](http://www.mayerfabrics.com)