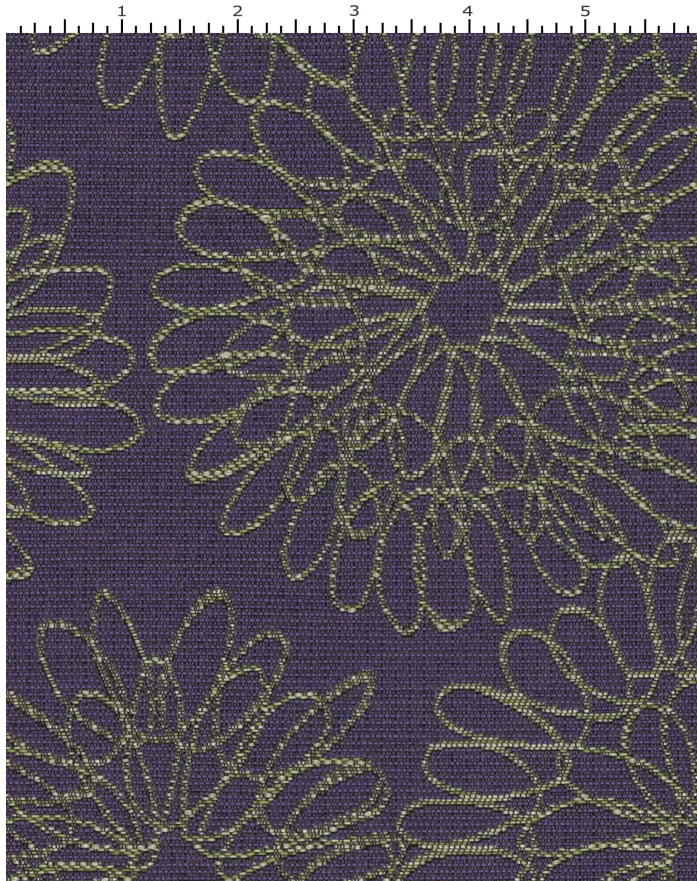


# WILDFLOWER GRAPE

392-005

# MAYER FABRICS



## CATEGORY

Seating

## PROPERTIES



## CONTENT

90% Repreve Solution Dyed Pre-Consumer Recycled Nylon/7% Solution Dyed Pre-Consumer Recycled Nylon/3% Solution Dyed Post-Consumer Recycled Nylon

## FINISH

Stain Repellent

## WIDTH

54"

## WEIGHT

13.79

## SHOWN RAILROADED

No

## DIRECTIONALITY

Yes

## ROLL LENGTH

~55-60 yards

## VISUAL REPEAT

14.375, 19.0

## BREAKING STRENGTH

Warp: 213.0 lbs. / Fill: 342.0 lbs.

## SEAM SLIPPAGE

Warp: 78.0 lbs. / Fill: 96.0 lbs.

## ABRASION RESISTANCE

Passes 165,000 Double Rubs (Wyzenbeek) \*

\* Abrasion test results exceeding ACT Performance Guidelines are not an indicator of product lifespan.

## PILLING RESISTANCE

Class: 5

## COLORFASTNESS TO CROCKING

Dry: Class 4 / Wet: Class 3

## COLORFASTNESS TO LIGHT

240 hours

## CLEANING

**WS: Water/Solvent Cleaner** - Spot clean with a mild solvent, an upholstery shampoo, or the foam from a mild detergent.

When using a solvent or dry cleaning product, follow instructions carefully and clean only in a well-ventilated room. Avoid any product that contains carbon tetrachloride or other toxic materials. With either method, pretest a small area before proceeding. Always rinse promptly with clean water.

**BC: Bleach Cleanable** - 1 parts bleach, 4 parts water = 20% bleach, 80% water solution. Do not clean / disinfect fabric for longer than 10 minutes using the 20% bleach solution. Always rinse promptly with clean water after applying the bleach solution. Failure to do so will void any and all warranties.

[Additional cleaning details at www.mayerfabrics.com](http://www.mayerfabrics.com)



© Mayer Fabrics 2024

Specifications are subject to change. Current specifications are available at [mayerfabrics.com](http://mayerfabrics.com)  
Mayer Fabrics | 500 S. Kitley Ave, Indianapolis, IN 46219

TF. 800.428.4415  
T. 317.267.2626  
F. 317.267.2629