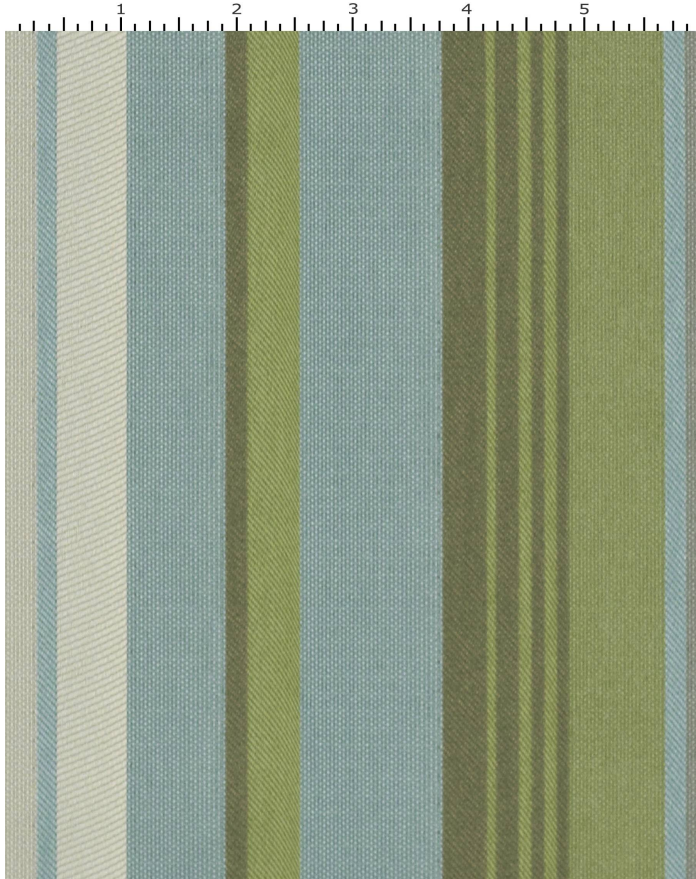


AVENUE ALOE

389-003

MAYER FABRICS



CATEGORY
Seating

PROPERTIES

CONTENT
100% Repreve Solution Dyed Pre-Consumer Recycled Nylon

FINISH
Stain Repellent

WIDTH
54"

WEIGHT
9.97

SHOWN RAILROADED
Yes

DIRECTIONALITY
Yes

ROLL LENGTH
55

VISUAL REPEAT
9.438, 0.0

BREAKING STRENGTH
Warp: 182.0 lbs. / Fill: 268.0 lbs.

SEAM SLIPPAGE
Warp: 49.0 lbs. / Fill: 69.0 lbs.

ABRASION RESISTANCE
Passes 335,000 Double Rubs* (Wyzenbeek/Cotton Duck) *
* Abrasion test results exceeding ACT Performance Guidelines are not an indicator of product lifespan.

PILLING RESISTANCE
Class: 5

COLORFASTNESS TO CROCKING
Dry: Class 4 / Wet: Class 3

COLORFASTNESS TO LIGHT
240 hours

CLEANING

WS: Water/Solvent Cleaner - Spot clean with a mild solvent, an upholstery shampoo, or the foam from a mild detergent. When using a solvent or dry cleaning product, follow instructions carefully and clean only in a well-ventilated room. Avoid any product that contains carbon tetrachloride or other toxic materials. With either method, pretest a small area before proceeding. Always rinse promptly with clean water.

BC: Bleach Cleanable - 1 parts bleach, 4 parts water = 20% bleach, 80% water solution. Do not clean / disinfect fabric for longer than 10 minutes using the 20% bleach solution. Always rinse promptly with clean water after applying the bleach solution. Failure to do so will void any and all warranties.

[Additional cleaning details at www.mayerfabrics.com](http://www.mayerfabrics.com)



© Mayer Fabrics 2024

Specifications are subject to change. Current specifications are available at mayerfabrics.com
Mayer Fabrics | 500 S. Kitley Ave, Indianapolis, IN 46219

TF. 800.428.4415
T. 317.267.2626
F. 317.267.2629