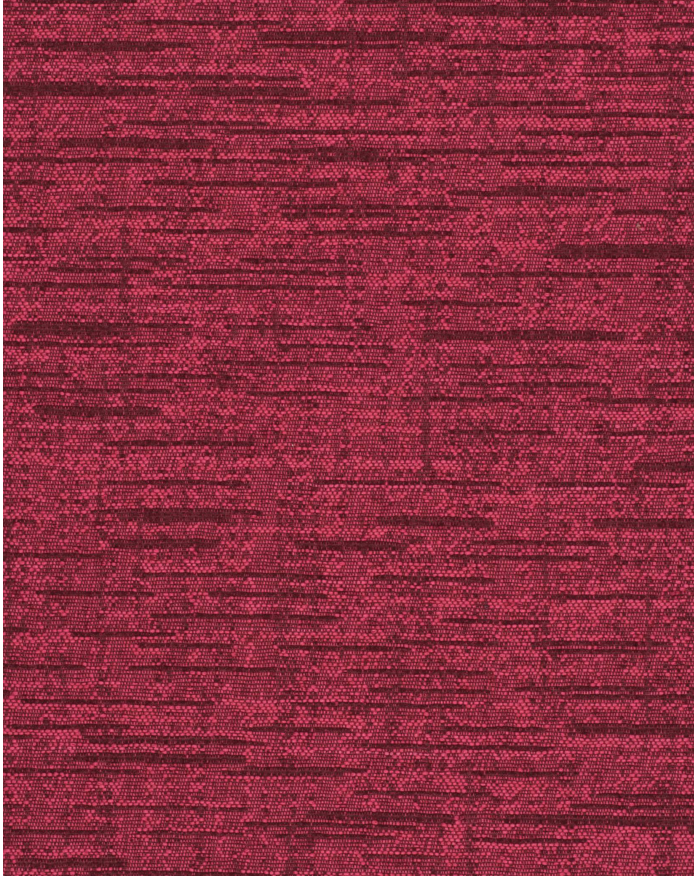


# SHANTUNG HIBISCUS

373-005

# MAYER FABRICS



**CATEGORY**  
Seating/Panel

**PROPERTIES**

**CONTENT**  
100% Recycled Polyester (65% Pre-/35% Post-Consumer)

**ADDITIONAL FINISHING AVAILABLE  
(CHECK FOR PRICING)**  
Nano-Tex, NanoGuard

**FINISH**  
None

**WIDTH**  
54"

**WEIGHT**  
10.69

**SHOWN RAILROADED**  
No

**DIRECTIONALITY**  
Yes

**ROLL LENGTH**  
55 yards

**VISUAL REPEAT**  
15.0, 12.88 Non-Matching

**BREAKING STRENGTH**  
Warp: 251.0 lbs. / Fill: 132.0 lbs.

**SEAM SLIPPAGE**  
Warp: 35.0 lbs. / Fill: 77.0 lbs.

**ABRASION RESISTANCE**  
Passes 51,000 Double Rubs (Wyzenbeek) \*  
\* Abrasion test results exceeding ACT Performance Guidelines are not an indicator of product lifespan.

**PILLING RESISTANCE**  
Class: 5

**COLORFASTNESS TO CROCKING**  
Dry: Class 4 min / Wet: Class 3 min

**COLORFASTNESS TO LIGHT**  
40 hours

## CLEANING

**WS: Water/Solvent Cleaner** - Spot clean with a mild solvent, an upholstery shampoo, or the foam from a mild detergent. When using a solvent or dry cleaning product, follow instructions carefully and clean only in a well-ventilated room. Avoid any product that contains carbon tetrachloride or other toxic materials. With either method, pretest a small area before proceeding. Always rinse promptly with clean water.

**BC: Bleach Cleanable** - 1 parts bleach, 9 parts water = 10% bleach, 90% water solution. Do not clean / disinfect fabric for longer than 10 minutes using the 10% bleach solution. Always rinse promptly with clean water after applying the bleach solution. Failure to do so will void any and all warranties.

[Additional cleaning details at www.mayerfabrics.com](http://www.mayerfabrics.com)



© Mayer Fabrics 2024

Specifications are subject to change. Current specifications are available at [mayerfabrics.com](http://mayerfabrics.com)  
Mayer Fabrics | 500 S. Kitley Ave, Indianapolis, IN 46219

TF. 800.428.4415  
T. 317.267.2626  
F. 317.267.2629